



2008 KENTUCKY GOAT MANAGEMENT AND
MARKETING CALENDAR

2008 Goat Management and Marketing Calendar

Greetings from the KY Sheep and Goat Development Office

We're pleased to have a part in presenting to you the 2008 Kentucky Goat Management and Marketing Calendar. It seems that every year, it just gets better!

I'm sure you will find a wealth of valuable information contained within these pages and hope there is something here for everyone.

The highlights of 2007 had to include the creation of the Kentucky Sheep and Goat Development Office and its official opening last May. This office is committed to the unification of the Commonwealth's small ruminant industries and keeping Kentucky a leader in the production and promotion of goats and sheep in the United States. We cannot hope to achieve that goal without your support and we recognize and salute you, the producer, for your dedication and hard work.

Congratulations on your choice to be a part of the fastest growing and most exciting segment of American agriculture, the goat industry!

Ray Bowman

Executive Director

Kentucky Sheep and Goat Development Office

Cooperators:

Kentucky Goat
Producers Association

Kentucky Department
of Agriculture

University of Kentucky
College of Agriculture

Kentucky Sheep and
Goat Development
Office



Please enjoy and use this calendar as a management tool in the coming months. Additional copies can be purchased through the Kentucky Goat Producer's Association. Visit www.kentuckygpa.com for more information.

KGPA Board

Goat Health Information

Normal Body Temperature	101 to 102 degrees F
Respiratory Rate	10 - 30 breaths/minute (kids - 20-40 breaths per minute)
Estrus Cycle	18 - 21 days
Estrus (Standing Heat)	12 - 24 hours

Needed Goat Health Supplies

- ✓ Hoof Trimmers
- ✓ Thermometer
- ✓ Syringes and Needles
- ✓ Antibiotics (i.e. - oxytetracycline, penicillin)
- ✓ Other Injectibles (Bo-Se, Vitamins)
- ✓ Dewormers
- ✓ Nutritional Drench and/or electrolytes
- ✓ Wound dressing/antiseptic spray/ blood stop powder

Common Goat Dewormers (oral use)

Product	Dosage	Labeled
Moxidectin (Cydectin Pour-On)	5 ml/100 lbs.	Off-Label
Ivermectin (Ivomec Injectable)	1 ml/100 lbs	Off-Label
Fenbendazole (Safeguard goat drench)	2.5 ml/100 lbs.	Approved
Levamisole Injectable	2 ml/100 lbs.	Off-Label
Albendazole (Valbazen drench)	4 ml/100 lbs	Off-Label

Feeding Meat Goats

As a general rule of thumb, goats will consume about 4% of their body weight a day on a dry matter basis. This number can vary significantly based on size, stage of production, weather, etc. and therefore the 4% rule of thumb should be used in conjunction with body condition scoring to be certain goats are not over or under fed.

For economic and health reasons, forage should make up the majority of daily intake, and in the case of adult, non-lactating animals may be nutritious enough to constitute the entire diet. Growing animals and late gestation or lactating females will likely need additional supplements to meet their higher nutritional needs. Use the chart below to help determine whether or not you are meeting the nutritional requirements of your goat herd.

Production Stage	Daily lbs. of Dry Matter	% Protein	% TDN	Example of Daily Diets that Meet Requirements
Dry Doe (110 lbs.)	4.4	12	55	high quality fescue, clover or orchardgrass pasture (would need to consume 15-25 lbs per day depending on pasture type), or 5 lbs of most early cut hays (have values tested)
Late Gestation Doe (130 lbs)	5.2	14	60	high quality fescue/clover pasture plus 1-2 lbs of 14% protein concentrate feed, or 5 lbs of alfalfa or orchardgrass hay plus 1 lb of 14% protein concentrate feed
Lactating doe (130 lbs)	5.2	16	65	high quality fescue/clover pasture plus 2 lbs of 16% protein concentrate feed, or 5 lbs alfalfa hay plus 2 lbs of 16% protein concentrate feed
Weanling (50 lbs)	2.0	16	68	high quality fescue/clover pasture plus 1 lb of a 16% protein concentrate feed, or 1.5 lbs of alfalfa hays plus 1 lb of 16% protein concentrate feed
Yearling Doe (90 lbs)	3.6	14	65	high quality Fescue/Clover pasture, or high quality pasture plus 1 lb of a 14% protein concentrate feed, or 4 lbs of alfalfa or orchardgrass hay
Bucks (175 lbs)	7.0	12	60	high quality fescue, clover or orchardgrass pasture (would need to consume 23-37 lbs per day depending on pasture type), or high quality pasture plus 2 lbs of a 12% protein concentrate feed

**KENTUCKY DEPARTMENT OF
AGRICULTURE
HAY TESTING PROGRAM**



HAY HOTLINE

1-800-248-4628

**TO HAVE YOUR HAY TESTED, CALL
THE ABOVE NUMBER AND SCHEDULE
A TIME FOR SOMEONE TO COME TO
YOUR FARM AND OBTAIN A SAMPLE.
THE COST IS \$10 PER SAMPLE.**

Feedstuff	% Dry Matter	% Protein	% TDN
Fescue Pasture (not mature)	31	12	62
Red Clover Pasture	19	20	69
Orchard Grass Pasture	23.5	13	68
Alfalfa Hay, midbloom	90	17	58
Fescue Hay, early vegetative	91	12	61
Fescue Hay, early bloom	92	9.5	48
Orchardgrass Hay, early bloom	89	15	65
Shelled Corn	88	10	90
Soybean Hulls	90	9	77
Distillers Grain	90	30	90
Corn Gluten Feed	90	21	78

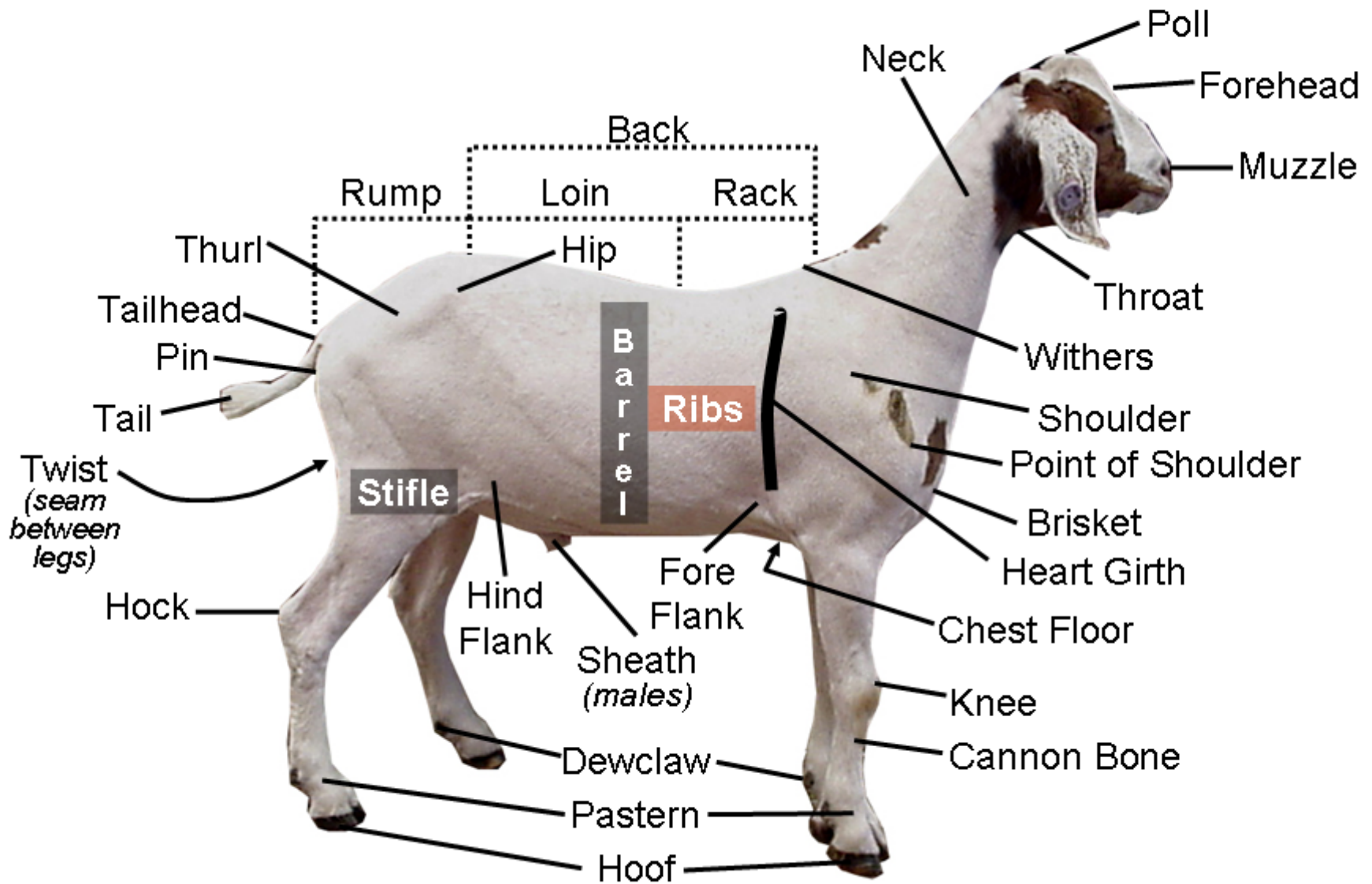
Body Condition Scoring the Goat

Body Condition Score	Description
BCS 1 Very Thin	Goat will be emaciated and possibly weak. The backbone is highly visible and forms a continuous ridge. The flank is hollow and ribs are clearly visible. There is no fat cover and fingers easily penetrate intercostal spaces (between the ribs).
BCS 2 Thin	Goat will be thin with the backbone visible and forming a continuous ridge. Ribs can be seen but there is a small amount of fat cover. Ribs are easily felt and intercostal spaces are smooth but can still be penetrated.
BCS 3 Good Condition	The goat will start to look smooth and the backbone will not be prominent. Ribs are barely discernible with an even layer of fat covering them. Intercostal spaces are felt using pressure.
BCS 4 Fat	The goat's backbone and ribs cannot be seen. Ribs can only be felt with firm pressure. The animal is smooth and sleek in appearance.
BCS 5 Obese	The goat's backbone and ribs are covered in excessive fat. The ribs may not be felt even with firm pressure.

Body Condition Recommendations

Breeding	At breeding does should have a body condition score in the 2.5 to 3.0 range. These does should flush successfully and breed easily.
Kidding	By kidding time, does should have increased their body condition score to 3.5 - 4.0. Does will lose condition quickly during lactation so some extra fat cover is desirable at this time, however, overly fat does are at increased risk of developing pregnancy toxemia. Never allow a does body condition score to decrease during the final weeks of gestation.
Lactation	Heavy producing does will lose condition quickly during lactation. Ideally does should maintain a BCS of 2.0 or greater during lactation, however some does may fall into the 1.5 range by weaning time. These does may need extra nutrition to return them to the desired BCS by breeding season.

External Parts of Goats



January 2008

Winter Feeding Program

- ✓ Dry does that are open or in early gestation and inactive bucks should have access to medium quality hay.
- ✓ Late gestation does need access to high quality hay and will likely need some concentrates. Concentrate feeding rate should be determined by Body Condition Score (see previous page).
- ✓ Lactating does should have access to high quality hay and should be fed some supplemental concentrates at this time to promote milk production.
- ✓ Nursing kids should have access to a 16% or higher creep feed no later than 30 days of age.
- ✓ Weanlings should have access to high quality hay and will likely need some supplemental concentrates to meet their growth potential.

Preparations for Kidding

- ✓ **Pre-Kidding Health Preparations:**
- ✓ Vaccinate does approximately 30 days prior to kidding with a product containing *Clostridia perfringens* C&D and *C. tetani* (CDT).

- ✓ Evaluate the body condition score of does and adjust feeding program as necessary. Does should score a 3.5 to 4.0 at kidding.
- ✓ Trim feet as needed.
- ✓ **Housing and Facilities:**
- ✓ Provide draft free well ventilated housing.
- ✓ Good lighting is essential.
- ✓ A supplemental heat source may be needed during extreme cold weather.
- ✓ **Needed Materials and Equipment:**
- ✓ Portable medical chest
- ✓ Propylene glycol for ketosis/pregnancy toxemia
- ✓ Stomach tube for weak non-nursing kids
- ✓ Frozen colostrum. Discard colostrums from previous kidding season and replace with fresh from mature healthy does. Freeze in small amounts (Ziploc bag).
- ✓ Clean towels
- ✓ Antibiotic soap
- ✓ Examination and OB gloves
- ✓ OB lubricant (KY gel)
- ✓ Surgical disinfectant (ex. Betadine scrub)
- ✓ Epinephrine for anaphylactic shock
- ✓ Oxytocin for birth induction
- ✓ Recommended antibiotic(s)

- ✓ Supplements such as Selenium/vitamin E injectable, Vitamin B1 or thiamine injectable, vitamin ADE liquid or injectable, calcium gel
- ✓ CDT vaccine
- ✓ Syringe and needles
- ✓ Iodine for dipping naval cords
- ✓ Surgical scissors
- ✓ Thermometer
- ✓ Hand scale for birth weights
- ✓ Ear tags and tagger
- ✓ OB sheep loop, for pulling kids
- ✓ Containers for washing hands and emersion of OB and surgical tools
- ✓ Record book for recording birth information

Cold Weather Kidding

- ✓ Manage late gestation does in a confined area for close observation.
- ✓ Move does to kidding pens prior to or just following kidding for nursing and bonding (3-5 days).
- ✓ Give kid(s) selenium/vitamin E by injection and vitamin ADE at birth.
- ✓ Trim navel cord if needed and dip in 7% iodine solution.
- ✓ Once bonded, move to larger pens, (25 sq ft /doe), separate single, and multiple birth-does if possible and feed accordingly.

- ✓ **Doe Nutrition:**
- ✓ Lactating does require a 16% protein ration. Feed 60% of the ration as high quality forage (5-6 lbs/hay/day). Feed energy at 40% of the ration composed of cereals and/or grain (2-3 lbs/day).
- ✓ Increase concentrate feeding by ½ lb/day for each additional kid. Monitor body condition scores. Early lactation does should be at condition 3.5 – 4.0 but will drop rapidly.
- ✓ **Internal Parasite Management– Doe:**
- ✓ Deworm does at kidding as the hormones released at kidding can drastically increase worm populations.
- ✓ Does should also be on a coccidiostat placed in the feed or mineral such as Rumensin (monensin), Bovatec (lasalocid), and Decox (decoquinate).

Note: All off label drug use must be prescribed and overseen by a licensed veterinarian.

Note: Follow label directions and withdraw times for all vaccines, medications and feed additives.

Note: Management tips include throughout the calendar may not coordinate with the calendar page on which they appear.

January 2008

Sun	Mon	Tue	Wed	Thu	Fri	Sat
		<i>1</i> Due May 31	<i>2</i> Due June 1	<i>3</i> Due June 2	<i>4</i> Due June 3	<i>5</i> Due June 4 Bullitt County Stockyard Graded Sale Shepherdsville (502) 955-8290
<i>6</i> Due June 5	<i>7</i> Due June 6	<i>8</i> Due June 7	<i>9</i> Due June 8	<i>10</i> Due June 9 Islamic New Year Barren River Livestock Graded Sale Bowling Green (270) 843-3224	<i>11</i> Due June 10	<i>12</i> Due June 11 Paintsville Livestock Market Graded Sale Western Kentucky Livestock Graded Sale (270) 965-3123
<i>13</i> Due June 12	<i>14</i> Due June 13 Bluegrass Stockyards of Richmond Graded Sale (859) 623-1280	<i>15</i> Due June 14	<i>16</i> Due June 15	<i>17</i> Due June 16	<i>18</i> Due June 17	<i>19</i> Due June 18
<i>20</i> Due June 19	<i>21</i> Due June 20	<i>22</i> Due June 21	<i>23</i> Due June 22	<i>24</i> Due June 23	<i>25</i> Due June 24	<i>26</i> Due June 25
<i>27</i> Due June 26	<i>28</i> Due June 27	<i>29</i> Due June 28	<i>30</i> Due June 29	<i>31</i> Due June 30		Always call ahead to confirm sale dates!!!

February 2008

Cold Weather Kidding (cont.)

- ✓ **Kid Nutrition:**
- ✓ Kids should be provided access to a 16% + creep feed no later than 30 days of age and should have free access to high quality hay.
- ✓ **Kid Vaccinations:**
- ✓ Vaccinate kids for enterotoxaemia and tetanus (CDT) at 30 days of age by injection and follow with a booster 30 days later.
- ✓ **Castration:**
- ✓ Male kids may be castrated at approximately 30 days of age if desired but do not have to be castrated for most marketing purposes. Intact male kids should be marketed young, or separated from females in the herd at a young age to prevent unwanted pregnancies.
- ✓ **Internal Parasite Management- Kid:**
- ✓ Grow kids in clean environment. Use a Coccidiostat in the feed or mineral for the management of coccidia. Curative treatments (short-term use) include Corid (amprolium) and Albon (sulfadimethoxine). Prevent direct infection of kids by elevating feed and water sources

above fecal contamination level.

- ✓ Deworm growing kids as needed (determined through FAMACHA or Fecal Egg Counts)

Record-Keeping

- ✓ Record inventory of does kidding along with kidding date, kid ID, number and sex of kids and kid birth weight.
- ✓ Does with health problems such as mastitis, kidding problems, poor milking ability, under weight kids, as well as does failing to breed should be recorded.
- ✓ Kid weights should be recorded at weaning. Does consistently weaning kids weighing below the herd average should be culled.

Grazing Management

- ✓ Plan grazing strategies for winter annuals. Prepare for spring seeding of summer annuals.

Marketing Considerations

- ✓ Market goat prices should remain strong through the colder months as supply is typically low.
- ✓ Utilize graded sales or Tel-O-

Auctions to market 45-80 pound slaughter kids.

- ✓ Always observe proper withdrawal times on de-wormers, antibiotics, and other drugs before sending any animal to slaughter.



Note: All off label drug use must be prescribed and overseen by a licensed veterinarian.

Note: Follow label directions and withdraw times for all vaccines, medications and feed additives.

Note: Management tips include throughout the calendar may not coordinate with the calendar page on which they appear.

February 2008

Sun	Mon	Tue	Wed	Thu	Fri	Sat
					<i>1</i> Due July 1	<i>2</i> Due July 2 Bullitt County Stockyard Graded Sale Shepherdsville (502) 955-8290
<i>3</i> Due July 4	<i>4</i> Due July 5	<i>5</i> Due July 6	<i>6</i> Due July 7	<i>7</i> Due July 8	<i>8</i> Due July 9	<i>9</i> Due July 10 Paintsville Livestock Market Graded Sale (606) 297-3991 Western Kentucky Livestock Graded Sale (270) 965-3123
<i>10</i> Due July 3	<i>11</i> Due July 11 Bluegrass Stockyards of Richmond Graded Sale (859) 623-1280	<i>12</i> Due July 12	<i>13</i> Due July 13	<i>14</i> Due July 14 Barren River Livestock Graded Sale Bowling Green (270) 843-3224	<i>15</i> Due July 15	<i>16</i> Due July 16
<i>17</i> Due July 17	<i>18</i> Due July 18	<i>19</i> Due July 19	<i>20</i> Due July 20	<i>21</i> Due July 21	<i>22</i> Due July 22	<i>23</i> Due July 23
<i>24</i> Due July 24	<i>25</i> Due July 25	<i>26</i> Due July 26	<i>27</i> Due July 27	<i>28</i> Due July 28	<i>29</i> Due July 29	Always call ahead to confirm sale dates!!!

March 2008

Begin Spring Grazing

- ✓ Construct temporary electric fencing for grazing cool season annuals and fescue.
- ✓ Plan for water, mineral and creep feed needs.
- ✓ Place does with kids on clean parasite free pasture. (Parasite free is pasture not grazed for 6 months or annual pastures having soil disturbance during planting).
- ✓ Introduce new pasture gradually over a 4-week period. Increase grazing time until the desired amount is reached by the fourth week.

Preparations for Kidding (See January)

Spring Kidding

- ✓ If weather permits, kid does outside on clean parasite free pasture made up of tall fescue, winter annuals or pasture not grazed by goats for the past 6 months.
- ✓ At birth, give Selenium/vitamin E by injection and vitamin ADE.
- ✓ Treat navel with 7% iodine.
- ✓ **Doe Nutrition:**
- ✓ Graze does on high quality pasture. Choose from fresh, un-grazed tall fescue or fall

seeded winter annuals. Feed energy as cereals and/or grain (.5 lbs/day). Increase energy feed by ½ lb/day for each addition kid.

- ✓ Monitor body weight by body condition scores. Early lactation does should be at a condition of 3.0 –3.5.
- ✓ **Internal Parasite Management- Doe:**
- ✓ Deworm does at kidding as the hormones released at kidding can drastically increase worm populations.
- ✓ Does should also be provided a Coccidiostat in feed or mineral as growing kids are highly impacted by coccidia.
- ✓ **Kid Nutrition:**
- ✓ Give kids free access to high quality parasite free pasture. Kids should be provided access to a 16% + creep feed no later than 30 days of age
- ✓ **Kid Vaccinations:**
- ✓ Vaccinate kids for enterotoxaemia and tetanus (CDT) at 30 days of age by injection and follow with a booster 30 days later.
- ✓ **Castration:**
- ✓ Male kids may be castrated at approximately 30 days of age if desired but do not have to be castrated for most market-

ing purposes. Intact male kids should be marketed young, or separated from females in the herd at a young age to prevent unwanted pregnancies.

- ✓ **Internal Parasite Management- Kid:**
- ✓ Monitor kids closely for Coccidia or parasite infestation during warm, wet weather. Treat as needed.

Record-Keeping

- ✓ Record inventory of does kidding along with kidding date, kid ID, number and sex of kids and kid birth weight.
- ✓ Does with health problems such as mastitis, kidding problems, poor milking ability, under weight kids, as well as does failing to breed should be recorded.
- ✓ Kid weights should be recorded at weaning. Does consistently weaning kids weighing below the herd average should be culled.

Marketing Considerations

- ✓ Market prices for slaughter goats are typically strong in March and April as supply is low.
- ✓ A peak in demand may occur around the Easter holiday.
- ✓ Always observe proper withdrawal times on de-wormers, antibiotics and other drugs.

Note: All off label drug use must be prescribed and overseen by a licensed veterinarian.

Note: Follow label directions and withdraw times for all vaccines, medications and feed additives.

Note: Management tips include throughout the calendar may not coordinate with the calendar page on which they appear.

March 2008

Sun	Mon	Tue	Wed	Thu	Fri	Sat
						<i>1</i> Due July 30 Bullitt County Stockyard Graded Sale Shepherdsville (502) 955-8290
<i>2</i> Due July 31	<i>3</i> Due Aug 1	<i>4</i> Due Aug 2	<i>5</i> Due Aug 3	<i>6</i> Due Aug 4	<i>7</i> Due Aug 5	<i>8</i> Due Aug 6 Paintsville Graded Sale (606) 297-3991 Western Kentucky Livestock Graded Sale (270) 965-3123
<i>9</i> Due Aug 7	<i>10</i> Due Aug 8 Bluegrass Stockyards of Richmond Graded Sale (859) 623-1280	<i>11</i> Due Aug 9	<i>12</i> Due Aug 10	<i>13</i> Due Aug 11 Barren River Livestock Graded Sale Bowling Green (270) 843-3224	<i>14</i> Due Aug 12	<i>15</i> Due Aug 13
<i>16</i> Due Aug 14	<i>17</i> Due Aug 15	<i>18</i> Due Aug 16	<i>19</i> Due Aug 17	<i>20</i> Due Aug 18 Mawlid al-Nabi Prophet's Birthday	<i>21</i> Due Aug 19	<i>22</i> Due Aug 20
<i>23</i> Due Aug 21 Western Roman Easter	<i>24</i> Due Aug 22	<i>25</i> Due Aug 23	<i>26</i> Due Aug 24	<i>27</i> Due Aug 25	<i>28</i> Due Aug 26	<i>29</i> Due Aug 27
<i>30</i> Due Aug 28	<i>31</i> Due Aug 29					Always call ahead to confirm sale dates!!!

April 2008

Forage and Grazing Management:

- ✓ Allow does and kids to move away from fecal deposits each 7 days. Move feeder and waterer from pasture to pasture as animals move.
- ✓ Move from winter annual pasture onto tall fescue (May – July).
- ✓ Plant summer annuals in May for July-September grazing. Plant as conventional or no-tillage.

Spring Breeding for Fall Kids

- ✓ **Preparing Buck for Breeding:**
 - ✓ Have a veterinarian perform breeding soundness exams on bucks.
 - ✓ Feed 2-4 lb grain/day and high quality hay or pasture (feed 30 days before and during breeding).
 - ✓ Trim feet, de-worm.
 - ✓ Keep buck cool, group by aggressiveness and age to avoid injury from fighting.
- ✓ **Preparing Does for Breeding:**
 - ✓ Does with BCS of 2.0 –3.0, flushed with ½ -1 lb of corn daily (feed 30 days before and during breeding)
 - ✓ Trim feet, de-worm.

- ✓ Examine feet, legs and udders.
- ✓ Isolate females from the buck for at least two weeks prior to breeding.
- ✓ **April/May Breeding:**
 - ✓ Give mature bucks access to 25-35 does and yearling bucks access to 10-15 does.
 - ✓ Equip buck with breeding harness using different color marker every 21 days.
 - ✓ Record markings to estimate kidding date.
 - ✓ Note - Some does may not cycle this time of year.



Note: All off label drug use must be prescribed and overseen by a licensed veterinarian.

Note: Follow label directions and withdraw times for all vaccines, medications and feed additives.

Note: Management tips include throughout the calendar may not coordinate with the calendar page on which they appear.

April 2008

Sun	Mon	Tue	Wed	Thu	Fri	Sat
		<i>1</i> Due Aug 30	<i>2</i> Due Aug 31	<i>3</i> Due Sep 1	<i>4</i> Due Sep 2	<i>5</i> Due Sep 3 Bullitt County Stockyard Graded Sale Shepherdsville (502) 955-8290
<i>6</i> Due Sep 4	<i>7</i> Due Sep 5	<i>8</i> Due Sep 6	<i>9</i> Due Sep 7	<i>10</i> Due Sep 8 Barren River Livestock Graded Sale Bowling Green (270) 843-3224	<i>11</i> Due Sep 9	<i>12</i> Due Sep 10 Paintsville Livestock Market Graded Sale (606) 297-3991 Western Kentucky Livestock Graded Sale (270) 965-3123
<i>13</i> Due Sep 11	<i>14</i> Due Sep 12 Bluegrass Stockyards of Richmond Graded Sale (859) 623-1280	<i>15</i> Due Sep 13	<i>16</i> Due Sep 14	<i>17</i> Due Sep 15	<i>18</i> Due Sep 16	<i>19</i> Due Sep 17
<i>20</i> Due Sep 18	<i>21</i> Due Sep 19	<i>22</i> Due Sep 20	<i>23</i> Due Sep 21	<i>24</i> Due Sep 22	<i>25</i> Due Sep 23	<i>26</i> Due Sep 24
<i>27</i> Due Sep 25 Eastern Orthodox Easter	<i>28</i> Due Sep 26	<i>29</i> Due Sep 27	<i>30</i> Due Sep 28			Always call ahead to confirm sale dates!!!

May 2008

Wean Winter Kids

- ✓ Wean winter kids at 3 to 4 months of age. Kids should be eating and drinking well and should be at or close to market weight.
- ✓ Observe weaned kids closely as weaning stress can cause coccidiosis outbreaks. Keep feed and water sources clean and provide a coccidiostat in feed, water or mineral.
- ✓ Declining maternal antibodies increase the chance for respiratory diseases.
- ✓ Enterotoxaemia (over-eating disease) and acidosis are a threat with progressive concentrate feeding.
- ✓ If kids are allowed to graze short (3-4 inch) pastures contaminated with gastrointestinal parasites, significant intestinal parasitism will occur.

Record Keeping

- ✓ Record weaning weights to determine high and low producing does. Does consistently producing below average weaning weights should be culled.

Spring Feeding Program

- ✓ Dry does that have just weaned kids or in early gestation and inactive bucks should have access to quality hay or pasture (Do not overstock)
- ✓ Late gestation does need access to high quality hay or pasture and may need some concentrates. Concentrate feeding rate should be determined by Body Condition Score.
- ✓ Lactating does should have access to high quality hay or pasture and should be fed some supplemental concentrates at this time to promote heavy milk production.
- ✓ Nursing kids should have access to a 16% or higher creep feed no later than 30 days of age.
- ✓ Weanlings should have access to high quality hay or pasture and will likely need some supplemental concentrates to meet their growth potential.

Marketing Considerations

- ✓ Market goat prices should still be strong but may start to decrease in late May.
- ✓ Kids weaning at 45+ lbs. can be marketed at weaning. Closely monitor weights of kids to market at the optimum weight of 50 to 65 pounds.
- ✓ Utilize graded sales or tel-auctions to market 45-80 pound slaughter kids.
- ✓ Always observe proper withdrawal times on de-wormers, antibiotics, and other drugs before sending any animal to slaughter.

Note: All off label drug use must be prescribed and overseen by a licensed veterinarian.

Note: Follow label directions and withdraw times for all vaccines, medications and feed additives.

Note: Management tips include throughout the calendar may not coordinate with the calendar page on which they appear.

May 2008

Sun	Mon	Tue	Wed	Thu	Fri	Sat
Always call ahead to confirm sale dates!!!				1 Due Sep 29	2 Due Sep 30	3 Due Oct 1 Bullitt County Stockyard Graded Sale Shepherdsville (502) 955-8290
4 Due Oct 2	5 Due Oct 3	6 Due Oct 4	7 Due Oct 5	8 Due Oct 6 Barren River Livestock Graded Sale Bowling Green (270) 843-3224	9 Due Oct 7	10 Due Oct 8 Paintsville Livestock Market Graded Sale (606) 297-3991 Western Kentucky Livestock Graded Sale (270) 965-3123
11 Due Oct 9	12 Due Oct 10 Bluegrass Stockyards of Richmond Graded Sale (859) 623-1280	13 Due Oct 11	14 Due Oct 12	15 Due Oct 13	16 Due Oct 14	17 Due Oct 15
18 Due Oct 16	19 Due Oct 17	20 Due Oct 18	21 Due Oct 19	22 Due Oct 20	23 Due Oct 21	24 Due Oct 22
25 Due Oct 23	26 Due Oct 24	27 Due Oct 25	28 Due Oct 26	29 Due Oct 27	30 Due Oct 28	31 Due Oct 29

June 2008

Evaluate De-Wormers in June

June is a good time to evaluate the de-wormer you are presently using. This is necessary because worms on some Kentucky goat farms are resistant to some de-wormers. In such cases, the de-wormer may not effectively remove the parasites. If your de-wormer is not effective, it is best to learn that as soon as possible and **PRIOR TO THE HIGH RISK MONTHS OF JULY AND AUGUST**. Each year goat deaths due to worms peak in August. Knowledge obtained by testing allows time to change the de-worming program if needed and prevent loss of valuable animals. When temperatures rise in July, conditions become ideal for the rapid development of high levels of pasture contamination due to Barberpole worms (*Haemonchus contortus*). Thus, it is important to determine that the dewormers used by farmers are actually removing these damaging worms. Worm egg counts are an inexpensive and practical means to evaluate your dewormer.

(Gil Myer PhD Goat Producer's Newsletter, 2003)

Marketing Considerations

- ✓ Market goat prices will likely begin dropping in June for the summer/fall price slump.
- ✓ Closely monitor weights of winter and spring born kids to market at the optimum market weight of 50 to 65 pounds.
- ✓ Utilize graded sales or Tel-O-Auctions to market 45-80 pound slaughter kids.
- ✓ Always observe proper withdrawal times on de-wormers, antibiotics, and other drugs before sending any animal to slaughter.



Note: All off label drug use must be prescribed and overseen by a licensed veterinarian.

Note: Follow label directions and withdraw times for all vaccines, medications and feed additives.

Note: Management tips include throughout the calendar may not coordinate with the calendar page on which they appear.

June 2008

Sun	Mon	Tue	Wed	Thu	Fri	Sat
1 Due Oct 30	2 Due Oct 31	3 Due Nov 1	4 Due Nov 2	5 Due Nov 3	6 Due Nov 4	7 Due Nov 5 Bullitt County Stockyard Graded Sale Shepherdsville (502) 955-8290
8 Due Nov 6	9 Due Nov 7 Bluegrass Stockyards of Richmond Graded Sale (859) 623-1280	10 Due Nov 8	11 Due Nov 9	12 Due Nov 10 Barren River Livestock Graded Sale Bowling Green (270) 843-3224	13 Due Nov 11	14 Due Nov 12 Paintsville Livestock Market Graded Sale Western Kentucky Livestock Graded Sale (270) 965-3123
15 Due Nov 13	16 Due Nov 14	17 Due Nov 15	18 Due Nov 16	19 Due Nov 17	20 Due Nov 18	21 Due Nov 19
22 Due Nov 20	23 Due Nov 21	24 Due Nov 22	25 Due Nov 23	26 Due Nov 24	27 Due Nov 25	28 Due Nov 26
29 Due Nov 27	30 Due Nov 28					Always call ahead to confirm sale dates!!!

July 2008

Summer Health Management

- ✓ Producers should be on high alert for parasite problems beginning in July.
- ✓ FAMACHA Sampling - Examine each animal in the herd for anemia every two to three weeks beginning in June through September. Deworm as needed.
- ✓ Fecal egg sampling - Sample 10% of the herd each month June through September.
- ✓ Note - Animals recently dewormed can become reinfested quickly during hot, humid weather.
- ✓ Hot, humid weather may also increase the incident of other respiratory and digestive diseases. Animals that have diarrhea or are not eating normally should be evaluated and treated immediately.

Forage and Grazing Management

- ✓ Rotate pastures to break worm life cycles and reduce the need for deworming.
- ✓ Graze summer annuals at mid-summer (July 10-October).
- ✓ Pastures should be subdivided by temporary fencing. Free access will result in under or overgrazing.

Summer Feeding Program

- ✓ Dry does that have just weaned kids or in early gestation and inactive bucks should have access to quality hay or pasture (Do not overstock)
- ✓ Late gestation does need access to high quality hay or pasture and may need some concentrates. Concentrate feeding rate should be determined by Body Condition Score.
- ✓ Lactating does should have access to high quality hay or pasture and should be fed some supplemental concentrates at this time to promote heavy milk production.
- ✓ Nursing kids should have access to a 16% or higher creep feed no later than 30 days of age.
- ✓ Weanlings should have access to high hay or quality pasture and will likely need some supplemental concentrates to meet their growth potential.
- ✓ **Observe pastures to prevent overgrazing. Close grazing during summer will greatly increase worm infestations.**

Marketing Considerations

- ✓ Market goat prices will likely have dropped and may remain lower throughout summer and fall.
- ✓ Utilize graded sales or Tel-O-Auctions to market 45-80 pound slaughter kids.
- ✓ Always observe proper withdrawal times on de-wormers, antibiotics, and other drugs before sending any animal to slaughter.

Note: All off label drug use must be prescribed and overseen by a licensed veterinarian.

Note: Follow label directions and withdraw times for all vaccines, medications and feed additives.

Note: Management tips include throughout the calendar may not coordinate with the calendar page on which they appear.

July 2008

Sun	Mon	Tue	Wed	Thu	Fri	Sat
		<i>1</i> Due Nov 29	<i>2</i> Due Nov 30	<i>3</i> Due Dec 1	<i>4</i> Due Dec 2	<i>5</i> Due Dec 3 Bullitt County Stockyard Graded Sale Shepherdsville (502) 955-8290
<i>6</i> Due Dec 4	<i>7</i> Due Dec 5	<i>8</i> Due Dec 6	<i>9</i> Due Dec 7	<i>10</i> Due Dec 8 Barren River Livestock Graded Sale Bowling Green (270) 843-3224	<i>11</i> Due Dec 9	<i>12</i> Due Dec 10 Paintsville Livestock Market Graded Sale (606) 297-3991 Western Kentucky Livestock Graded Sale (270) 965-3123
<i>13</i> Due Dec 11	<i>14</i> Due Dec 12 Bluegrass Stockyards of Richmond Graded Sale (859) 623-1280	<i>15</i> Due Dec 13	<i>16</i> Due Dec 14	<i>17</i> Due Dec 15	<i>18</i> Due Dec 16	<i>19</i> Due Dec 17
<i>20</i> Due Dec 18	<i>21</i> Due Dec 19	<i>22</i> Due Dec 20	<i>23</i> Due Dec 21	<i>24</i> Due Dec 22	<i>25</i> Due Dec 23	<i>26</i> Due Dec 24
<i>27</i> Due Dec 25	<i>28</i> Due Dec 26	<i>29</i> Due Dec 27	<i>30</i> Due Dec 28	<i>31</i> Due Dec 29		Always call ahead to confirm sale dates!!!

August 2008

Forage and Grazing Management

- ✓ Producers with warm season annuals can broadcast perennial ryegrass into standing summer annual.
- ✓ Cereal crops should be drilled into closely grazed fescue or double disked fescue plots.
- ✓ Apply nitrogen to fescue for accumulation and grazing in late October – December.

Fall Breeding for Winter Kids

- ✓ **Preparing Buck for Breeding:**
- ✓ Have a veterinarian perform breeding soundness exams on bucks.
- ✓ Feed 2-4 lb grain/day and high quality hay or pasture (feed 30 days before and during breeding).
- ✓ Trim feet, de-worm.
- ✓ Keep buck cool, group by aggressiveness and age to avoid injury from fighting.
- ✓ **Preparing Does for Breeding:**
- ✓ Does with BCS of 2.0 –3.0, flushed with ½ -1 lb of corn daily (feed 30 days before and during breeding)
- ✓ Trim feet, de-worm.
- ✓ Examine feet, legs and udders.

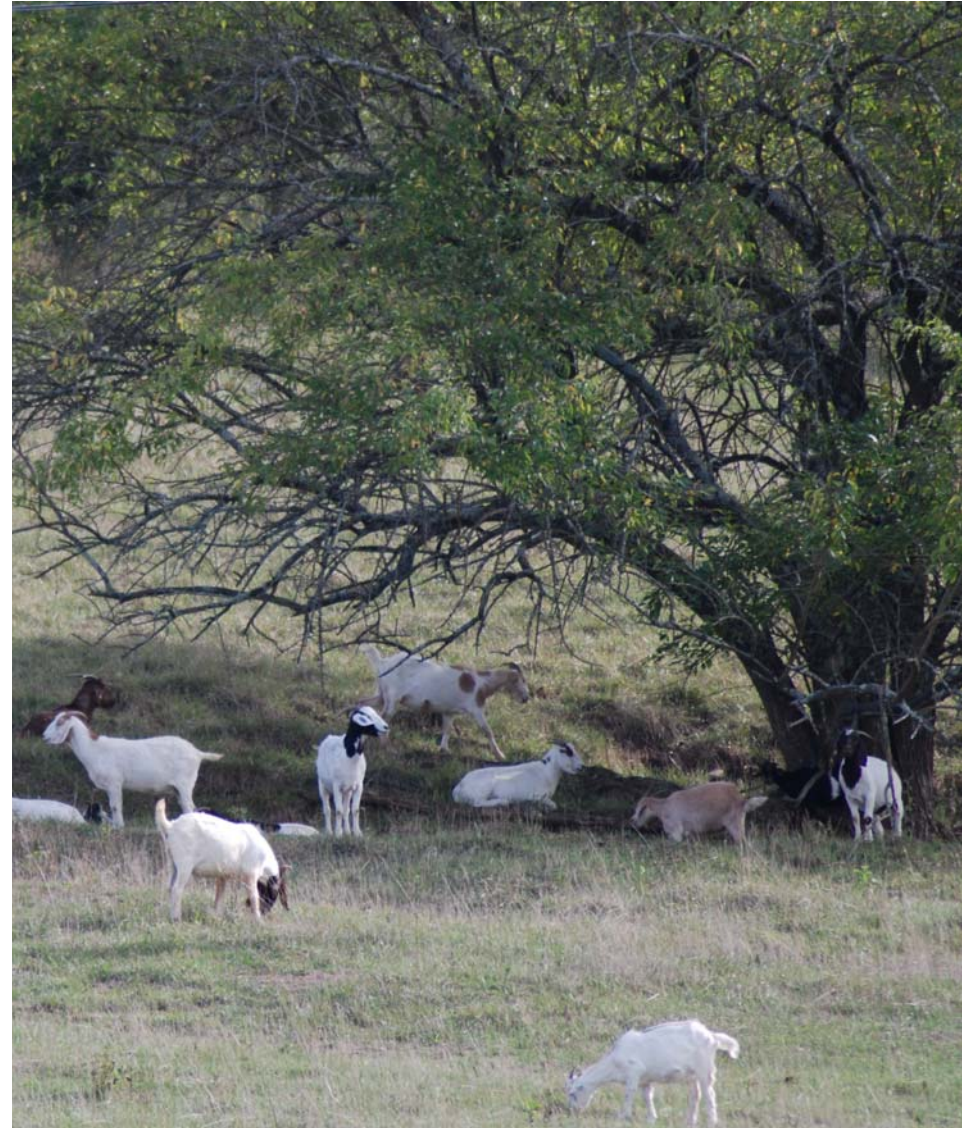
- ✓ Isolate females from the buck for at least two weeks prior to breeding.

Marketing Considerations

- ✓ Market goat prices will likely have dropped and may remain lower throughout summer and fall.
- ✓ Kid quality in Kentucky has traditionally been lowest in August and September. Closely observe kids to ensure proper health and nutrition.
- ✓ Utilize graded sales or Tel-O-Auctions to market 45-80 pound slaughter kids.
- ✓ Always observe proper withdrawal times on de-wormers, antibiotics, and other drugs before sending any animal to slaughter.

Fall Breeding for Winter Kids

- ✓ Give mature bucks access to 25-35 does and yearling bucks access to 10-15 does.
- ✓ Equip buck with breeding harness using different color marker every 21 days.
- ✓ Record markings to estimate kidding date.



Note: All off label drug use must be prescribed and overseen by a licensed veterinarian.

Note: Follow label directions and withdraw times for all vaccines, medications and feed additives.

Note: Management tips include throughout the calendar may not coordinate with the calendar page on which they appear.

August 2008

Sun	Mon	Tue	Wed	Thu	Fri	Sat
					1 Due Dec 30	2 Due Dec 31 Bullitt County Stockyard Graded Sale Shepherdsville (502) 955-8290
3 Due Jan 1	4 Due Jan 2	5 Due Jan 3	6 Due Jan 4	7 Due Jan 5	8 Due Jan 6	9 Due Jan 7 Paintsville Graded Sale (606) 297-3991 Western Kentucky Livestock Graded Sale (270) 965-3123
10 Due Jan 8	11 Due Jan 9 Bluegrass Stockyards of Richmond Graded Sale (859) 623-1280	12 Due Jan 10	13 Due Jan 11	14 Due Jan 12 Barren River Livestock Graded Sale Bowling Green (270) 843-3224	15 Due Jan 13	16 Due Jan 14
17 Due Jan 15	18 Due Jan 16	19 Due Jan 17	20 Due Jan 18	21 Due Jan 19	22 Due Jan 20	23 Due Jan 21
24 Due Jan 22	25 Due Jan 23	26 Due Jan 24	27 Due Jan 25	28 Due Jan 26	29 Due Jan 27	30 Due Jan 28
31 Due Jan 29						Always call ahead to confirm sale dates!!!

September 2008

Summer Health Management

- ✓ Producers should be on high alert for parasite problems in September.
- ✓ FAMACHA Sampling - Examine each animal in the herd for anemia every two to three weeks beginning in June through September. Deworm as needed.
- ✓ Fecal egg sampling - Sample 10% of the herd each month June through September.
- ✓ Note - Animals recently dewormed can become reinfested quickly during hot, humid weather.
- ✓ Hot, humid weather may also increase the incident of other respiratory and digestive diseases. Animals that have diarrhea or are not eating normally should be evaluated and treated immediately.

Wean Spring Kids

- ✓ Wean spring kids at 3 to 4 months of age. Kids should be eating and drinking well and should be at or close to market weight.
- ✓ Observe weaned kids closely as weaning stress can cause coccidiosis outbreaks. Keep feed and water sources clean and provide a coccidiostat in

feed, water or mineral.

- ✓ Declining maternal antibodies increase the chance for respiratory diseases.
- ✓ If kids are allowed to graze short (3-4 inch) pastures contaminated with gastrointestinal parasites, significant intestinal parasitism will occur.

Record Keeping

- ✓ Record weaning weights to determine high and low producing does. Does consistently producing below average weaning weights should be culled.

Preparations for Fall Kidding

- ✓ **Pre-Kidding Health Preparations:**
- ✓ Vaccinate does approximately 30 days prior to kidding with a product containing *Clostridia perfringens* C&D and *C. tetani* (CDT).
- ✓ Evaluate the body condition score of does and adjust feeding program as necessary. Does should score a 3.5 to 4.0 at kidding.
- ✓ Trim feet as needed.
- ✓ If needed, does can be dewormed at this time (follow label directions for pregnant does). FAMACHA or Fecal

Egg Counts may be used to determine if deworming is needed.

- ✓ **Needed Materials and Equipment:**
- ✓ Portable medical chest
- ✓ Propylene glycol for ketosis/pregnancy toxemia
- ✓ Stomach tube for weak non-nursing kids
- ✓ Frozen colostrum. Discard colostrums from previous kidding season and replace with fresh from mature healthy does. Freeze in small amounts (Ziploc bag).
- ✓ Clean towels
- ✓ Antibiotic soap
- ✓ Examination and OB gloves
- ✓ OB lubricant (KY gel)
- ✓ Surgical disinfectant (ex. Betadine scrub)
- ✓ Epinephrine for anaphylactic shock
- ✓ Oxytocin for birth induction
- ✓ Recommended antibiotic(s)
- ✓ Supplements such as Selenium/vitamin E injectable, Vitamin B1 or thiamine injectable, vitamin ADE liquid or injectable, calcium gel
- ✓ CDT vaccine
- ✓ Syringe and needles
- ✓ Iodine for dipping naval cords
- ✓ Surgical scissors
- ✓ Thermometer

- ✓ Hand scale for birth weights
- ✓ Ear tags and tagger
- ✓ OB sheep loop, for pulling kids
- ✓ Containers for washing hands and emersion of OB and surgical tools
- ✓ Record book for recording birth information

Marketing Considerations

- ✓ Market goat prices are likely still stifled.
- ✓ Utilize graded sales or tel-auctions to market 45-80 pound slaughter kids.
- ✓ Closely monitor weights of spring born kids to market at the optimum market weight of 50 to 70 pounds.
- ✓ Take advantage of fall breeding stock sales to market quality, young replacement does.
- ✓ Always observe proper withdrawal times on de-wormers, antibiotics, and other drugs before sending any animal to slaughter.

Note: All off label drug use must be prescribed and overseen by a licensed veterinarian.

Note: Follow label directions and withdraw times for all vaccines, medications and feed additives.

Note: Management tips include throughout the calendar may not coordinate with the calendar page on which they appear.

September 2008

Sun	Mon	Tue	Wed	Thu	Fri	Sat
	<i>1</i> Due Jan 30	<i>2</i> Due Jan 31 Start of Ramadan Month of Fasting	<i>3</i> Due Feb 1	<i>4</i> Due Feb 2	<i>5</i> Due Feb 3	<i>6</i> Due Feb 4 Bullitt County Stockyard Graded Sale Shepherdsville (502) 955-8290
<i>7</i> Due Feb 5	<i>8</i> Due Feb 6 Bluegrass Stockyards of Richmond Graded Sale (859) 623-1280	<i>9</i> Due Feb 7	<i>10</i> Due Feb 8	<i>11</i> Due Feb 9 Barren River Livestock Graded Sale Bowling Green (270) 843-3224	<i>12</i> Due Feb 10	<i>13</i> Due Feb 11 Paintsville Livestock Market Graded Sale (606) 297-3991 Western Kentucky Livestock Graded Sale (270) 965-3123
<i>14</i> Due Feb 12	<i>15</i> Due Feb 13	<i>16</i> Due Feb 14	<i>17</i> Due Feb 15	<i>18</i> Due Feb 16	<i>19</i> Due Feb 17	<i>20</i> Due Feb 18
<i>21</i> Due Feb 19	<i>22</i> Due Feb 20	<i>23</i> Due Feb 21	<i>24</i> Due Feb 22	<i>25</i> Due Feb 23	<i>26</i> Due Feb 24	<i>27</i> Due Feb 25
<i>28</i> Due Feb 26	<i>29</i> Due Feb 27	<i>30</i> Due Feb 28				Always call ahead to confirm sale dates!!!

October 2008

Forage and Grazing Management

- ✓ Move from summer annual pasture into accumulated tall fescue (October 15 - December) and on to a winter annual as needed.
- ✓ Cows and horses grazing behind goats improve forage utilization and reduce parasites deposited on pasture in late summer and fall.

Fall Kidding

- ✓ Manage late gestation does in a confined area for close observation.
- ✓ Move does to kidding pens prior to or just following kidding for nursing and bonding (3-5 days) or kid does outside on clean pasture made up of stockpiled pasture if weather permits..
- ✓ Give kid(s) selenium/vitamin E by injection and vitamin ADE at birth.
- ✓ Trim navel cord if needed and dip in 7% iodine solution.
- ✓ Once bonded, move to larger pens, (25 sq ft /doe), separate single, and multiple birth-does if possible and feed accordingly.
- ✓ **Doe Nutrition:**
- ✓ Lactating does require a 16%

protein ration. Feed 60% of the ration as high quality forage (hay or pasture) Feed energy at 40% of the ration composed of cereals and/or grain (2-3 lbs/day).

- ✓ Increase concentrate feeding by ½ lb/day for each additional kid. Monitor body condition scores. Early lactation does should be at condition 3.5 – 4.0 but will drop rapidly.
- ✓ **Kid Nutrition:**
- ✓ Kids should be provided access to a 16% + creep feed no later than 30 days of age and should have free access to high quality hay.
- ✓ **Kid Vaccinations:**
- ✓ Vaccinate kids for enterotoxaemia and tetanus (CDT) at 30 days of age by injection and follow with a booster 30 days later.
- ✓ **Castration:**
- ✓ Male kids may be castrated at approximately 30 days of age if desired but do not have to be castrated for most marketing purposes. Intact male kids should be marketed young, or separated from females in the herd at a young age to prevent unwanted pregnancies.
- ✓

✓ **Internal Parasite Management- Doe:**

- ✓ Deworm does at kidding as the hormones released at kidding can drastically increase worm populations.
- ✓ Does should also be provided a Coccidiostat in feed or mineral as growing kids are highly impacted by coccidia.

Record-Keeping

- ✓ Record inventory of does kidding along with kidding date, kid ID, number and sex of kids and kid birth weight.
- ✓ Does with health problems such as mastitis, kidding problems, poor milking ability, under weight kids, as well as does failing to breed should be recorded.
- ✓ Kid weights should be recorded at weaning. Does consistently weaning kids weighing below the herd average should be culled.

Marketing Considerations

- ✓ (see September)

Note: All off label drug use must be prescribed and overseen by a licensed veterinarian.

Note: Follow label directions and withdraw times for all vaccines, medications and feed additives.

Note: Management tips include throughout the calendar may not coordinate with the calendar page on which they appear.

October 2008

Sun	Mon	Tue	Wed	Thu	Fri	Sat
			<i>1</i> Due Mar 1	<i>2</i> Due Mar 2 Eid al-Fitr Breaking of the Ramadan Fast	<i>3</i> Due Mar 3	<i>4</i> Due Mar 4 Bullitt County Stockyard Graded Sale Shepherdsville (502) 955-8290
<i>5</i> Due Mar 5	<i>6</i> Due Mar 6	<i>7</i> Due Mar 7	<i>8</i> Due Mar 8	<i>9</i> Due Mar 9 Barren River Livestock Graded Sale Bowling Green (270) 843-3224	<i>10</i> Due Mar 10	<i>11</i> Due Mar 11 Paintsville Livestock Market Graded Sale (606) 297-3991 Western Kentucky Livestock Graded Sale (270) 965-3123
<i>12</i> Due Mar 12	<i>13</i> Due Mar 13 Bluegrass Stockyards of Richmond Graded Sale (859) 623-1280	<i>14</i> Due Mar 14	<i>15</i> Due Mar 15	<i>16</i> Due Mar 16	<i>17</i> Due Mar 17	<i>18</i> Due Mar 18
<i>19</i> Due Mar 19	<i>20</i> Due Mar 20	<i>21</i> Due Mar 21	<i>22</i> Due Mar 22	<i>23</i> Due Mar 23	<i>24</i> Due Mar 24	<i>25</i> Due Mar 25
<i>26</i> Due Mar 26	<i>27</i> Due Mar 27	<i>28</i> Due Mar 28	<i>29</i> Due Mar 29	<i>30</i> Due Mar 30	<i>31</i> Due Mar 31	Always call ahead to confirm sale dates!!!

November 2008

Winter Breeding for Spring Kids

Preparing Buck for Breeding:

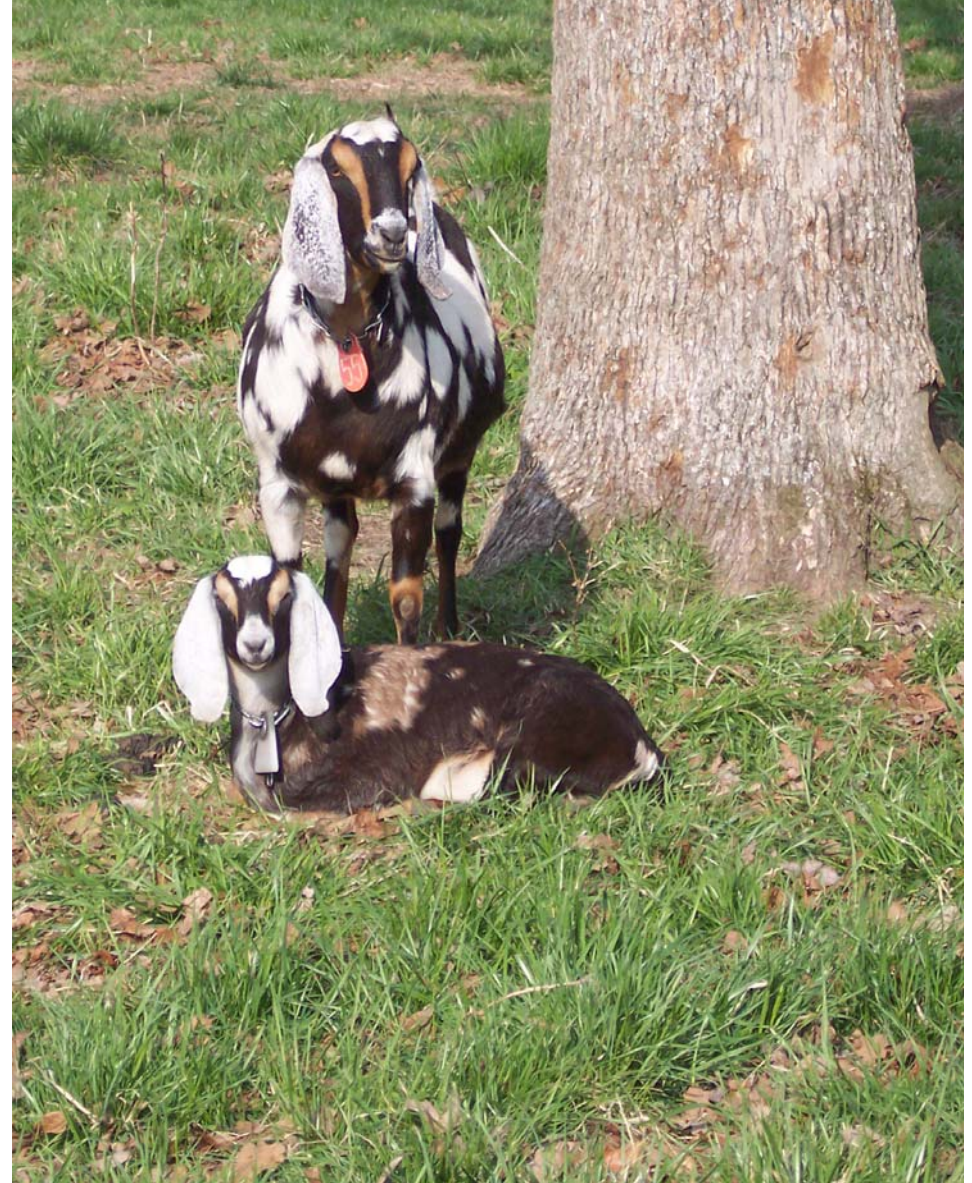
- ✓ Have a veterinarian perform breeding soundness exams on bucks.
- ✓ Feed 2-4 lb grain/day and high quality hay or pasture (feed 30 days before and during breeding).
- ✓ Trim feet, de-worm.
- ✓ Keep buck cool, group by aggressiveness and age to avoid injury from fighting.
- ✓ **Preparing Does for Breeding:**
- ✓ Does with BCS of 2.0 –3.0, flushed with ½ -1 lb of corn daily (feed 30 days before and during breeding)
- ✓ Trim feet, de-worm.
- ✓ Examine feet, legs and udders.
- ✓ Isolate females from the buck for at least two weeks prior to breeding.
- ✓ **November Breeding:**
- ✓ Give mature bucks access to 25-35 does and yearling bucks access to 10-15 does.
- ✓ Equip buck with breeding harness using different color marker every 21 days.
- ✓ Record markings to estimate kidding date.

Forage and Grazing Management

- ✓ Continue grazing accumulated tall fescue as available.
- ✓ Have hay tested for nutrient content as winter approaches.

Marketing Considerations

- ✓ Market goat prices may still be low as fall runs continue to be large, but we may start to see a slight increase.
- ✓ Utilize graded sales or Tel-O-Auctions to market 45-80 pound slaughter kids.
- ✓ Closely monitor weights of spring born kids to market at the optimum weight of 50-70 lbs.
- ✓ Always observe proper withdrawal times on de-wormers, antibiotics, and other drugs before sending any animal to slaughter.



Note: All off label drug use must be prescribed and overseen by a licensed veterinarian.

Note: Follow label directions and withdraw times for all vaccines, medications and feed additives.

Note: Management tips include throughout the calendar may not coordinate with the calendar page on which they appear.

November 2008

Sun	Mon	Tue	Wed	Thu	Fri	Sat
						<i>1</i> Due April 1 Bullitt County Stockyard Graded Sale Shepherdsville (502) 955-8290
<i>2</i> Due April 2	<i>3</i> Due April 3	<i>4</i> Due April 4	<i>5</i> Due April 5	<i>6</i> Due April 6	<i>7</i> Due April 7	<i>8</i> Due April 8 Paintsville Graded Sale (606) 297-3991 Western Kentucky Livestock Graded Sale (270) 965-3123
<i>9</i> Due April 9	<i>10</i> Due April 10 Bluegrass Stockyards of Richmond Graded Sale (859) 623-1280	<i>11</i> Due April 11	<i>12</i> Due April 12	<i>13</i> Due April 13 Barren River Livestock Graded Sale Bowling Green (270) 843-3224	<i>14</i> Due April 14	<i>15</i> Due April 15
<i>16</i> Due April 16	<i>17</i> Due April 17	<i>18</i> Due April 18	<i>19</i> Due April 19	<i>20</i> Due April 20	<i>21</i> Due April 21	<i>22</i> Due April 22
<i>23</i> Due April 23	<i>24</i> Due April 24	<i>25</i> Due April 25	<i>26</i> Due April 26	<i>27</i> Due April 27	<i>28</i> Due April 28	<i>29</i> Due April 29
<i>30</i> Due April 30						Always call ahead to confirm sale dates!!!

December 2008

Winter Feeding Program

- ✓ Dry does that are open or in early gestation and inactive bucks should have access to medium quality hay
- ✓ Late gestation does need access to high quality hay and will likely need some concentrates. Concentrate feeding rate should be determined by Body Condition Score.
- ✓ Lactating does should have access to high quality hay and should be fed some supplemental concentrates at this time to promote heavy milk production.
- ✓ Nursing kids should have access to a 16% or higher creep feed no later than 30 days of age.
- ✓ Weanlings should have access to high quality hay and will likely need some supplemental concentrates to meet their growth potential.

Record Keeping

- ✓ Review kid crop and marketing records.
- ✓ Plan 2008 breeding, kidding and marketing to maximize kid health, growth and marketability.

Marketing Considerations

- ✓ Watch for markets on all classes of goats to pick up in December as demand peaks for the ethnic holidays.
- ✓ Watch for a particularly strong market for cull bucks during December.
- ✓ Utilize graded sales or Tel-O-Auctions to market 45-80 pound slaughter kids.
- ✓ Always observe proper withdrawal times on dewormers, antibiotics, and other drugs.



Note: All off label drug use must be prescribed and overseen by a licensed veterinarian.

Note: Follow label directions and withdraw times for all vaccines, medications and feed additives.

Note: Management tips include throughout the calendar may not coordinate with the calendar page on which they appear.

December 2008

Sun	Mon	Tue	Wed	Thu	Fri	Sat
	<i>1</i> Due May 1	<i>2</i> Due May 2	<i>3</i> Due May 3	<i>4</i> Due May 4	<i>5</i> Due May 5	<i>6</i> Due May 6 Bullitt County Stockyard Graded Sale Shepherdsville (502) 955-8290
<i>7</i> Due May 7	<i>8</i> Due May 8 Eid al Adha Bluegrass Stockyards of Richmond Graded Sale (859) 623-1280	<i>9</i> Due May 9	<i>10</i> Due May 10	<i>11</i> Due May 11 Barren River Livestock Graded Sale Bowling Green (270) 843-3224	<i>12</i> Due May 12	<i>13</i> Due May 13 Paintsville Livestock Market Graded Sale (606) 297-3991 Western Kentucky Livestock Graded Sale (270) 965-3123
<i>14</i> Due May 14	<i>15</i> Due May 15	<i>16</i> Due May 16	<i>17</i> Due May 17	<i>18</i> Due May 18	<i>19</i> Due May 19	<i>20</i> Due May 20
<i>21</i> Due May 21	<i>22</i> Due May 22	<i>23</i> Due May 23	<i>24</i> Due May 24	<i>25</i> Due May 25 Christmas	<i>26</i> Due May 26	<i>27</i> Due May 27
<i>28</i> Due May 28	<i>29</i> Due May 29	<i>30</i> Due May 30	<i>31</i> Due May 31			Always call ahead to confirm sale dates!!!

2008 KGPA Officers

President - Shawn Harper, Benton, KY

Vice Pres. (Meat) - Frank Vinson, Sonora, KY

Vice Pres. (Dairy) - Chuck Kimberl, Goshen, KY

Vice Pres. (Purebred) - David Alexander, Woodburn, KY

Correspondence Sec. - Tom Garrity, Louisville, KY

Membership Sec. - Pattie Barrett, Scottsville, KY

Treasurer - Mary Young, Shepherdsville, KY

Board of Directors

Charlie Armstrong, Shepherdsville, KY

Paul Caudill, Denver, KY

Allison Fister, Georgetown, KY

Rick Spears, Ashland, KY

www.kentuckygpa.com



"Kentucky's Goat Industry -
Profit for Producers, Quality for
the Marketplace"

**We're off to a running start for Kentucky goat
and sheep producers...**



KENTUCKY SHEEP AND GOAT DEVELOPMENT OFFICE

Ray Bowman, Executive Director

1009 Twilight Trail, Suite 121

Frankfort, KY 40601

(502) 352-2434

info@kysheepandgoat.org



www.kysheepandgoat.org