

Outlook for livestock other than cattle

Lee Meyer

Econ. Subject Matter Training

October 17 - 21, 2005

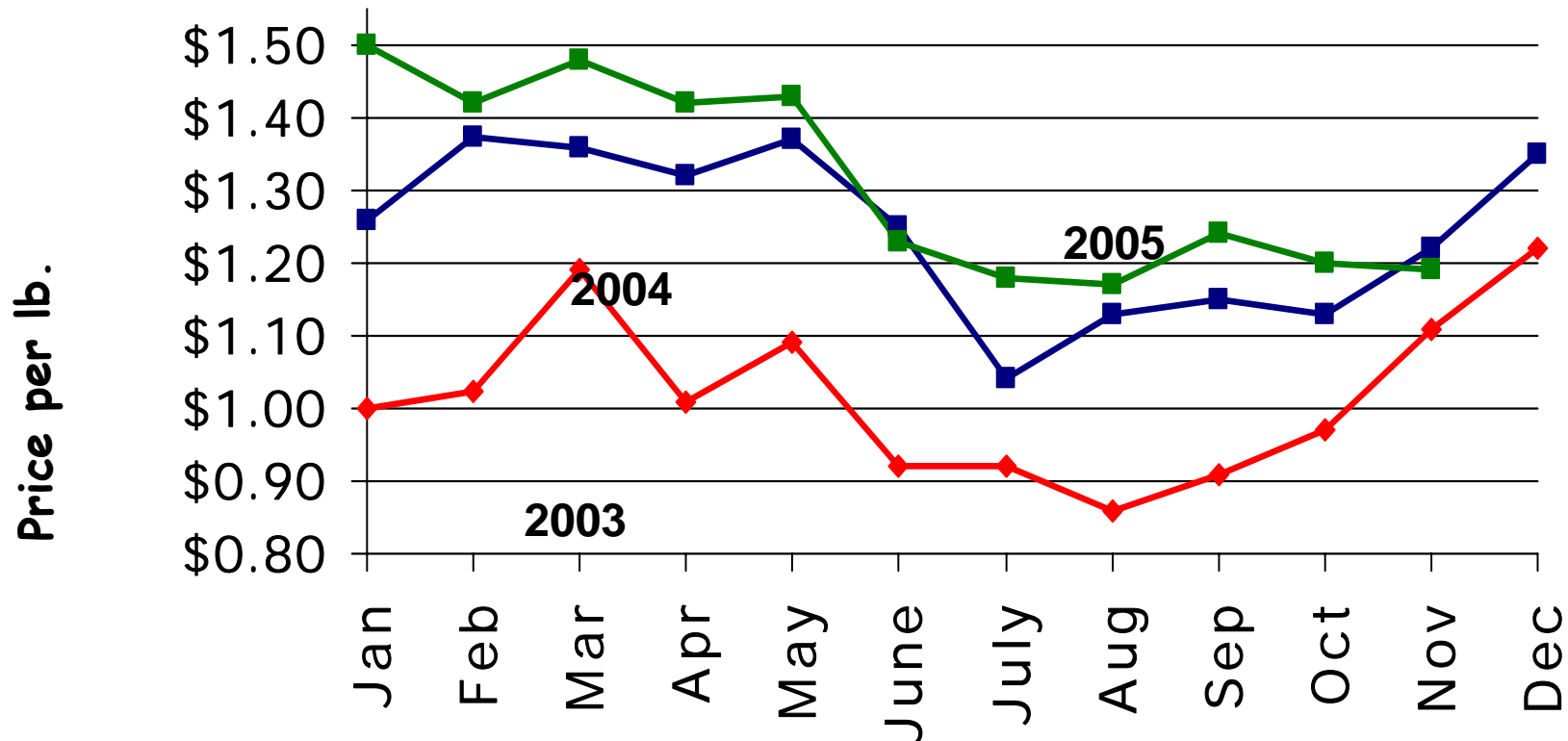


Kentucky's Goat Enterprise

	<u>2005</u>	<u>change</u>
U.S.	1.9 mill	+2%
Texas	1.1 mill	+7%
Tennessee	98,000	-8%
Georgia	77,000	+17%
Oklahoma	65,000	-11%
Kentucky	63,500	+3%
N. Carolina	52,200	-11%

Source:
USDA/NASS

Ky. Meat Goat Market



- Prices up in 2004, and 2005 – expected to continue in ‘06
- Prices in between New Holland, Pa. and San Angelo, Tx
- 20% - 25% Premium at Graded Sales (“by the lb.”)

Key Goat Enterprise Issues:

- ❖ Feed & Production Costs

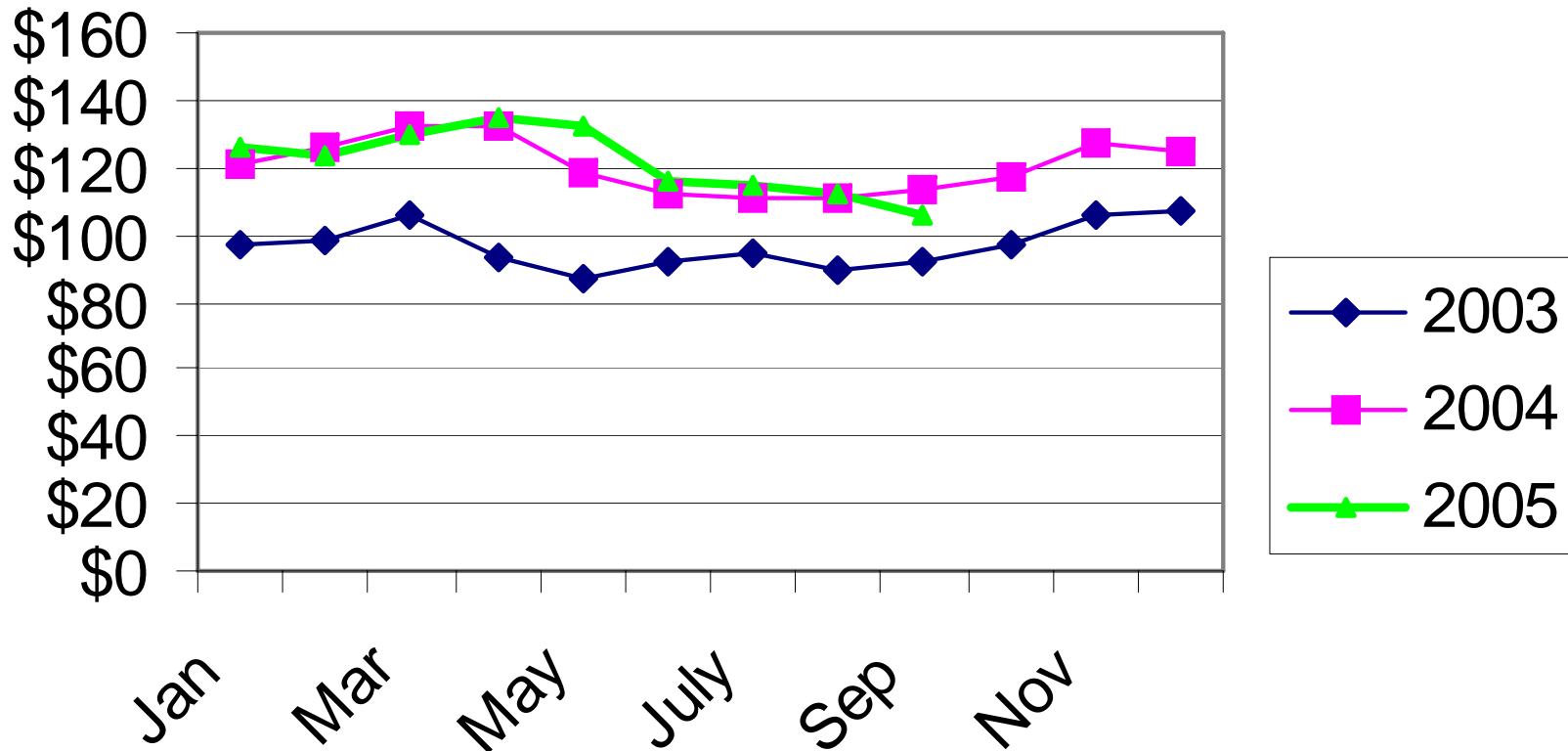
- ❖ Production Issues -
 parasite and foot management

- ❖ Marketing

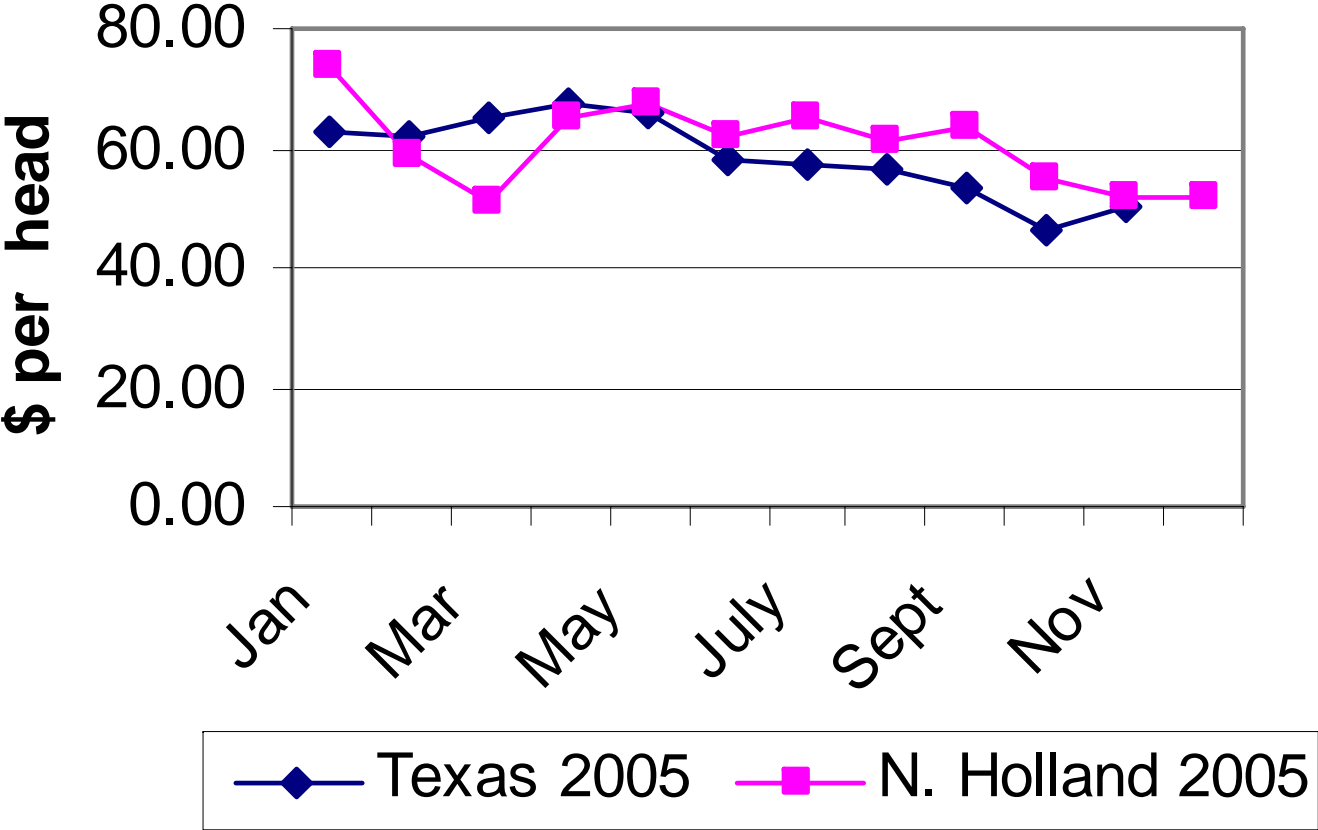
Texas Goat Prices

Kids, 40-60 lbs., Selection 2

\$/cwt



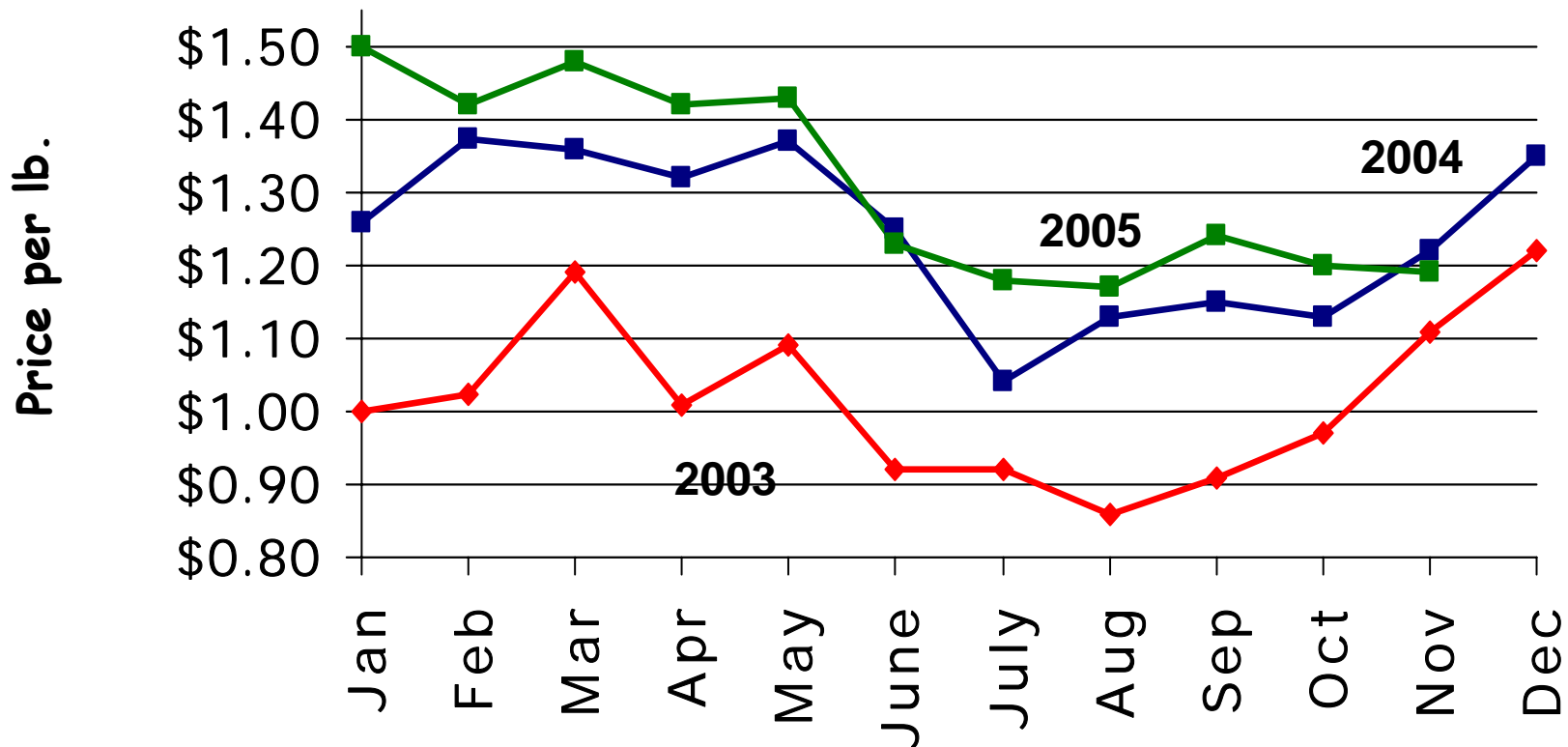
U.S. Goat Prices - 2005



Kentucky Goat Prices

40-60 lb. Selection 2

Graded Sales and Tel-O-Auctions



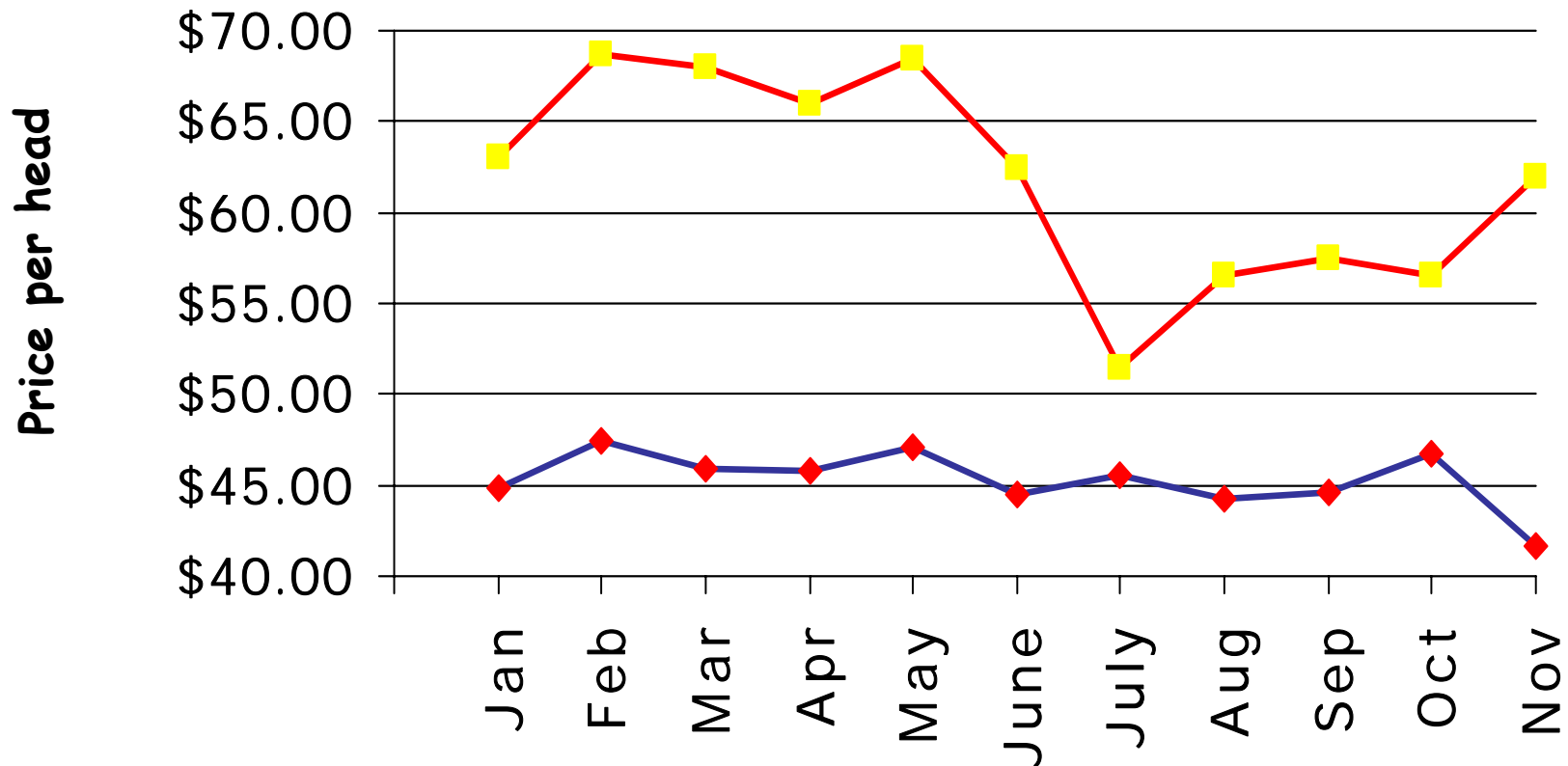
Keys to Goat Markets

- Weekly “by-the-head” markets have not only substantially lower prices, but much more variability in “take home \$\$”
- Graded sales have more consistent and somewhat higher prices
- Graded sales seem to be catching up with the New Holland market

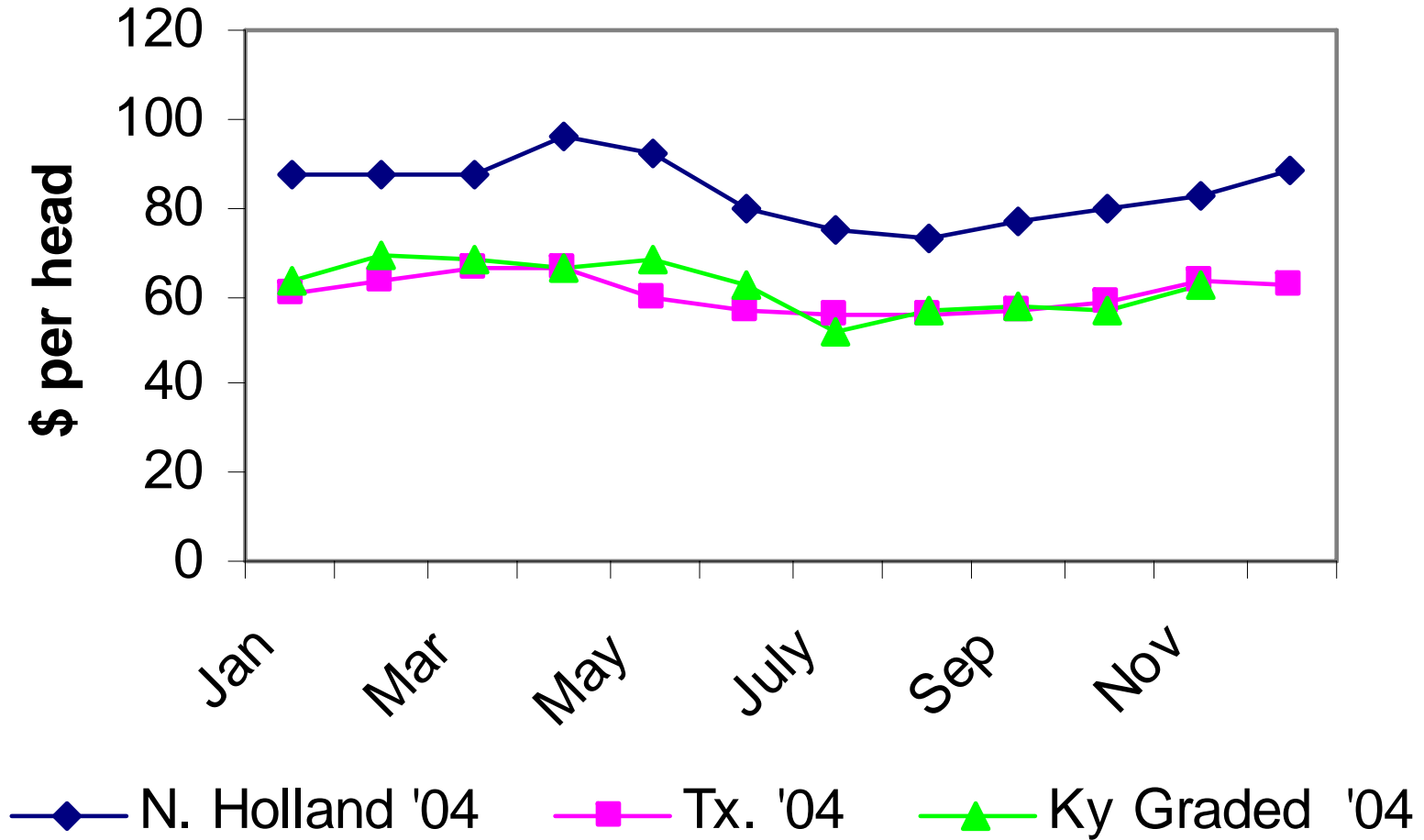
2004 Kentucky Goat Prices

40-60 lb. Selection # 1-2

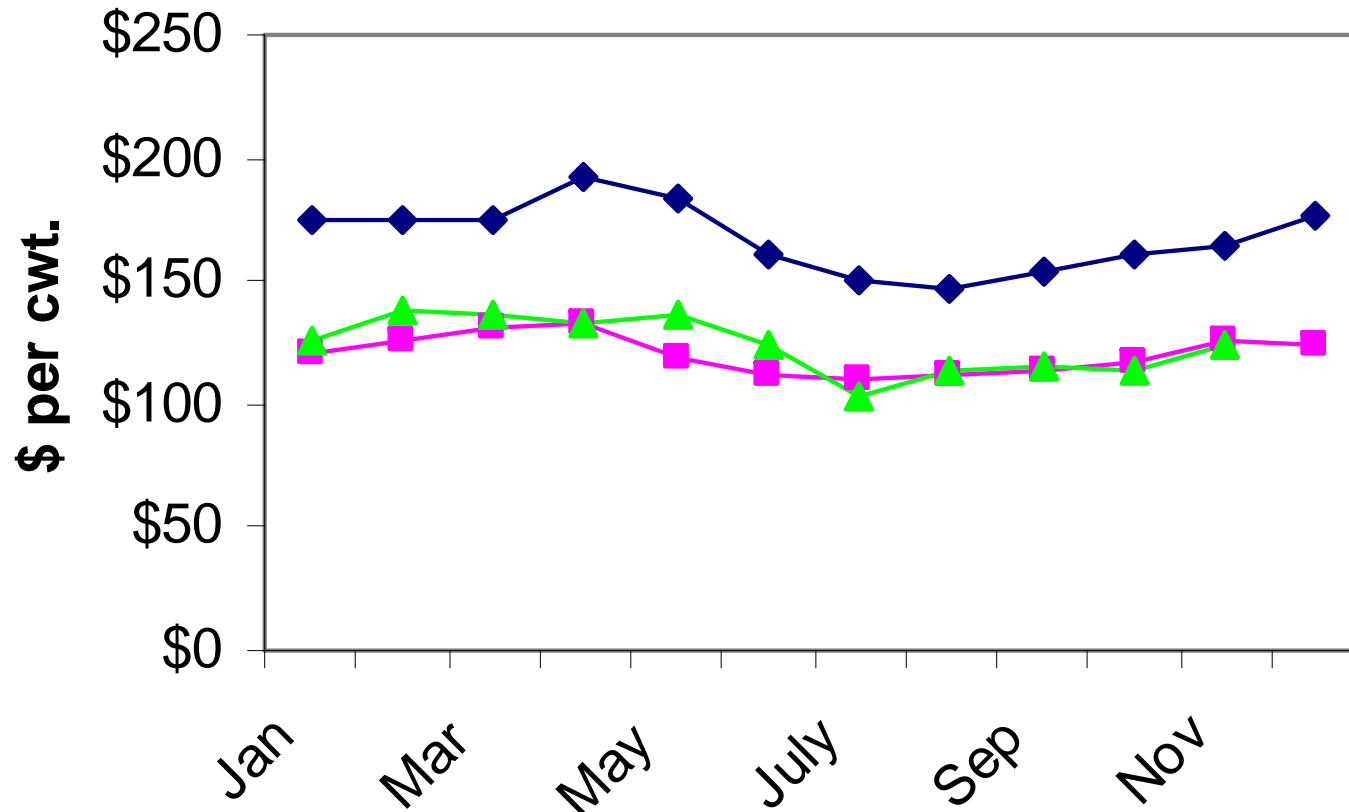
Graded vs. Non-Graded KY Markets



Goat Prices



Goat Prices



—◆— N. Holland '04 —■— Tx. '04 —▲— Ky Graded '04

Goat Price Summary

- **Nationally, prices have been increasing in the past three years**
- **Kentucky graded sales prices have been increasing relative to national prices;**
- **Demand for all meats has been strong and is probably one of the factors behind strong prices**
- **Buyers anticipate continued strong prices, perhaps better for 2006; a weak economy could cause a modest drop in prices**
- **Profitability for “efficient” production systems is good**