

# Goat Health Management Tips

Patty Scharko, DVM, MPH  
University of Kentucky, Extension Ruminant Veterinarian

**Normal:**      Temperature      101.5 - 103°F  
                  Respiratory rate      10-30 breaths/min (kids- 20-40 breaths/min)

## Routine Procedures

Trim feet every 4-6 months; depending on housing & environment

**Castration**    Beware of tetanus- vaccinate doe & kids described below; count 2 if band

**Vaccination** Follow manufacturer's instructions; use 3/4 to 1 inch 18-20 gauge needle  
Prefer subcutaneous (SQ) method if label directions permit; tent skin for SQ.  
SQ in neck area in meat goats, behind elbow in breeders/show goats  
Tetanus toxoid & Clostridium perfringens C&D (overeating disease)

**Initial dose**                    >1 month of age

**Immunize**                      3-4 weeks later

**Yearly booster**              To pregnant does 30 days before kidding

Goat vaccines: Bar Vac CD/T (Boehringer Ingelheim), Essential 3+T (Colorado Serum Co.),  
Vision CD/T (Intervet)

Sheep/cattle vaccine: Covexin 8 (Schering Plough)

**Deworming** **PERMANENT PASTURES PROMOTE PARASITES- promote browsing**

**POINTS**      Pasture rotation important- at least 3 times each year; EVERY 3 days best.

Do not graze grass below 4 inches.

Parasite resistance exists to many dewormers, especially Ivomec

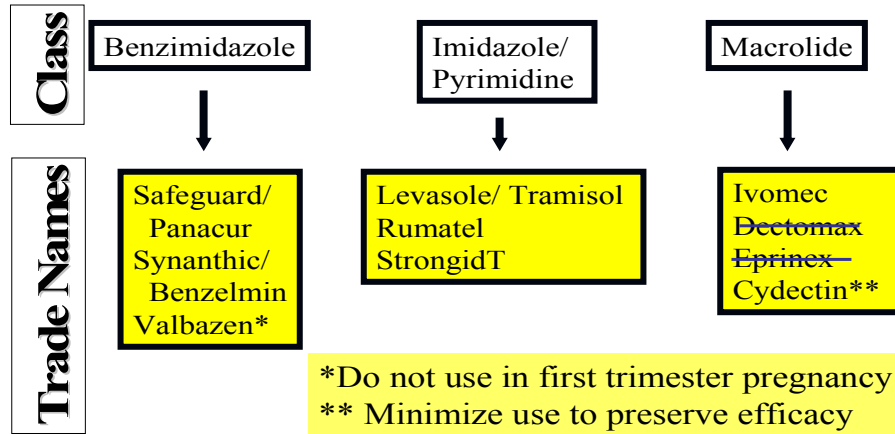
Fecal Egg Counts (FEC) help monitor parasites- FEC at deworming & repeat FEC in 14 days (need controls for FEC reduction test.)

Beware of diatomaceous earth- does not effectively deworm

Need 1.5-2 times higher dose than cattle/sheep oral products; do NOT underdose.  
Caution with levamisol. Do not use injectable formulation in goats.

Choose one product & use for at least one year; if suspect dewormer resistance,  
do FEC reduction test and change to a different class of drug

## Classes of Dewormers



### Deworming Tips

- Select parasite-resistant goats- FAMACHA and FEC (Fecal Egg Count)
- ISOLATE new additions on dry lot for 3 weeks; dry lot & NO access to grass.
- Deworm simultaneously on arrival with anthelmintic from each of the 3 classes;
- Do Fecal Egg County (FEC) 14 days later- can enter herd if negative.
- FAST- improves efficacy of some oral dewormers. Hold in dry lot or feed only dry hay for 12-24 hours before and 8-12 hours later. (Ad lib water)
- Avoid “salvage” deworming- showing signs (bottle jaw)

### Strategic Deworming Method

- Deworm 30 days before kidding
- Follow with 2 to 4 more dewormings at 3 week intervals
- Treat kids at weaning and utilize “safe” pastures {hay pasture, new pasture, not grazed for 3 months (spring) or 6 months (fall), grazed by cattle/horses}

### Summer Tactical Deworming – remove parasites from goats before the worms contaminate pasture

- Examples: Treat goats 10-14 days after rain, especially during a drought
- High fecal egg counts in spring (500 eggs per gram) or fall (1,000 EPG)

**FAMACHA**® “Smart drenching”; selective treatment based on pale eye color in the summer. System does not treat all goats; promotes identifying those that are resilient to internal worms.

### DISEASES

**Lice** control; cattle pour-on’s (example- Ivomec) as pour-on will get lice but NOT internal worms!

**Coccidia**- associated with stress and over-crowding

- Prevention: Rumensin    Beware in horses
- Bovatec\*    Beware in horses    \* **Extralabel in goats**
- Deccox
- Treatment: Corid (amprolium)\*    \* **Extralabel in goats**
- Sulfamethazine, sulfadimethoxine\*    \* **Extralabel in goats**

**Meningeal worm** (*Parelaphostrongylus tenuis*) from white tail deer; goat weak in rear legs.

**Lungworms** Occur in Kentucky

**PNEUMONIA** Do NOT use Micotil in goats. ILLEGAL to use Baytril in goats.  
Improve ventilation (best to keep on pasture, out of barn)  
Isolate new arrivals for 2-4 weeks; do not share waterers with herd

**Enterotoxemia/ over-eating disease** Prevent with vaccination

**White muscle disease** = selenium deficiency; use good mineral; may need to inject

**Polioencephalomalacia** Blindness/ seizure; B1 (thiamine) vitamin deficiency

**Listeria** “Circling disease”; prompt treatment with antibiotics

**Caseous Lymphadenitis** “Contagious abscess”, “cheesy gland”; isolate goat; consider vaccinating with Case-Bac or Caseous D-T (NOT labeled for goats)

**Johne’s disease** Wasting disease, usually no diarrhea; affected usually over 1 year of age

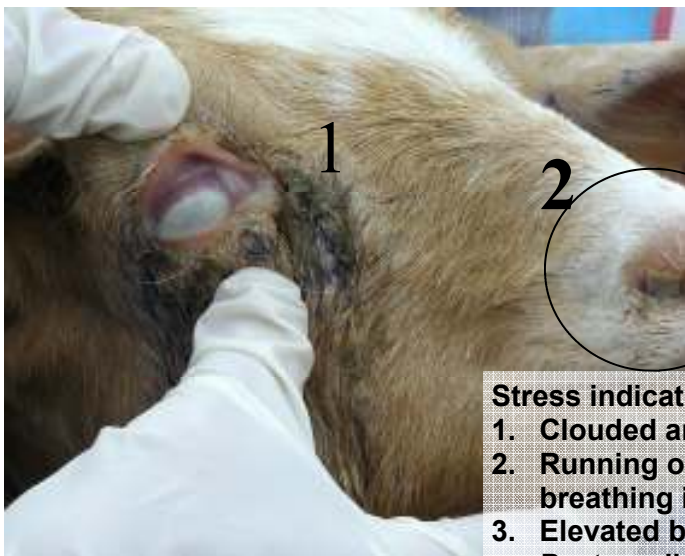
**Soremouth** “Orf”; wear gloves- contagious to humans

**Ringworm** Contagious to humans

**Q Fever** Bacteria *Coxiella burnetti* in placenta/fluids & milk; usually not a problem in goats; mild to serious flu symptoms in humans

**Tetanus** Prevent with good vaccination protocol

**Late Tem Abortions** Toxoplasma, Chlamydia, Campylobacter, Leptospirosis. Send to lab for dx



**Pinkeye** Chlamydia, Mycoplasma, or other agents; isolate; systemic and/or topical treatment with oxytetracycline

**Stress indicators :**

1. Clouded and weeping eyes indicating a *Moraxella* species infection.
2. Running or caked on yellow mucus, coughing and perhaps labored breathing is an indicator of *Pasteurella haemolytica*.
3. Elevated body temperature will be associated with the *Pasteurella* infection and may be the first indicator of disease onset.