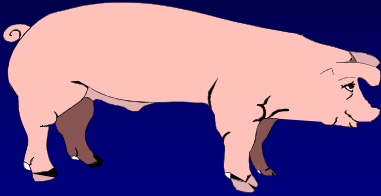


Characteristics of Swine



Characteristics of Swine

1. Serve as a market for farm labor
2. Serve as a market for grain
 - Converts corn (poor quality protein) to meat (high quality protein)
3. Serve as a market for unusable products

Examples of Unusable Products

- Damaged grains
 - Moldy grains
 - Insect damaged grains
 - Grains contaminated with weed seeds
- Packing house byproducts
 - Inedible fat
 - Meat meal
 - Blood meal
 - Bone meal
 - Dried blood plasma

Examples of Unusable Products

- Milling byproducts
 - Wheat bran, middlings
- Dairy byproducts
 - Whey, dried whey, lactose
- Distillers byproducts
 - Distillers grains - DDGS
 - Brewers grains
- Bakery waste
- Restaurant grease
- Garbage

Characteristics of Swine

4. Simple digestive tract
 - Utilize concentrates better than roughages
 - Efficient converters of feed to meat
 - Susceptible to nutrient deficiencies
5. Grow rapidly and efficiently
 - From birth to market in 5-6 months
6. Unique reproductive traits

Characteristics of Swine Unique Reproductive Traits

- Early sexual maturity
 - 6-7 months
- Short gestation period
 - 114 days
- Produce offspring at 1 year of age
- Short lactation
 - 2-4 weeks
- Can produce 2 - 2½ litters per year
- Can produce 25 pigs per sow per year
- So, a sow can produce 3.5 tons of live hogs per year

Characteristics of Swine

7. Marketed over wide range of weight
8. Low investment in breeding animals
9. High salvage value of sows when sold
10. Profitable
11. Large investment in buildings and equipment
12. Susceptible to diseases and parasites
13. Require high level of managerial skill
14. Public image – sometimes poor

But considerable improvements in recent years

The Poor Misunderstood Pig Misconceptions of Pigs and Pork

1. Pigs and pork are fat
2. Pigs are filthy animals
3. Pigs eat garbage
4. Pigs are stupid
5. Pork is “wormy”
Trichinosis was once a problem – but no more
6. Pork must be “well done” before consumed
160° F is recommended

National Pork Producers Council National Pork Board

- NPPC organized in 1970
- Largest commodity organization in the world
- Goals – promote pork, fund research
- Financed by a mandatory checkoff program
\$.40 per \$100 value sold
- Checkoff funds administered by the National Pork Board
- World Pork Expo – Trade Show – Des Moines - June
- Web sites: www.NPPC.org www.pork.org

