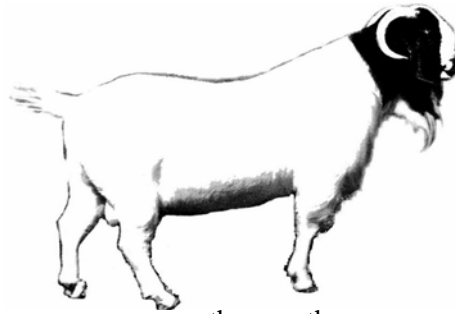


# 2007 Mountain Pride Meat Goat Show and Field Day



September 7<sup>th</sup> & 8<sup>th</sup> 2007  
UK Robinson Station, Jackson KY.

**This year's event will feature a Meat Goat Field Day, a 4-H/FFA Meat Goat Show, and an IBGA Sanctioned Open Meat Goat Show. Anyone interested in goats is invited to attend!**

## Event Schedule

### September 7<sup>th</sup>:

- 5:00 - 6:00 p.m. Meeting the Nutritional Needs of Goats – Terry Hutchens  
6:00 - 7:00 Forages of Goats – Dr. David Ditsch & Shaun Jackson  
7:00 - 8:00 Goat 101: What's an Ideal Goat – Show Judge, Armor Maddox  
8:00 - 9:00 FAMACHA\* Training (\$10 fee charged) – Keith Hackworth

### September 8<sup>th</sup>:

- 9:00 - 9:45 a.m. Youth Showmanship Clinic – Jason Brashear  
9:45 - 10:30 4-H/FFA Market Goat Weigh-in / Registration  
11:00 4-H/FFA Market Show Starts  
10:00 - 12:00 Open Show Registration  
1:00 p.m. Open Show Begins

\*The FAMACHA system, developed in South Africa by Dr. Fafa Malan (**F**A**F**A **M**A**L**A**N** **C**H**A**R**T**), is a technique used to help determine the level of anemia resulting from the internal blood sucking parasite *Haemonchus*, *Contortus* and the need for de-worming .

For further information contact: Shaun Jackson at (859) 257-9511 EXT 316 or 221  
[www.ca.uky.edu/robinsonstation](http://www.ca.uky.edu/robinsonstation)

**Mountain Pride 4-H/FFA Meat Goat Show Rules September 8, 2007**

- 1. Competition is limited to youth up to age 21 on January 1 of the current year. Show participants must be able to lead and control their goat.**
- 2. Each exhibitor is limited to ten (10) animals for the show.**
- 3. Registration begins at 9:45 a.m. and ends at 10:30 a.m. The show will begin at 11:00 a.m. There will be no entry fee or pre-registration for the show.**
- 4. Any breed of goat is eligible. There will be two divisions of goats shown (market wethers and market does). Each division will select a champion and these champions will compete for the Supreme Champion Award.**
- 5. All goats will be weighed and classified prior to the show and will be divided into classes within their divisions.**
- 6. All goats must be accompanied by a certificate of veterinarian inspection dated within 150 days of the show.**
- 7. Wether kids must not exhibit any testicular tissue. Animals having this will be dismissed. No bucks (billies) will be allowed.**
- 8. All market animals must have all milk teeth at weigh-in. Goats not having them will be dismissed.**
- 9. All goats must be polled or have their horns either tipped or cushioned with a material to help prevent injury to the exhibitor.**
- 10. All goats must have either an ear tag or legible tattoo to be able to show. No collar tags can be accepted.**
- 11. All goats must be in the direct control of the youth exhibitor on or before August 1 of the current year.**
- 12. No premiums will be paid. This is a ribbon show only.**
- 13. There will NOT be a wash facility at our station, please have your animals ready for show upon arrival on the grounds.**
- 14. Any item that comes up at the show that is not covered by these rules will be decided by the show committee and their decision will be final.**

**Questions or comments may be directed to Shaun Jackson at 859-257-9511 EXT 316 or 221.**

**Mountain Pride Open Boer Goat Show**  
**Sanctioned by International Boer Goat Association**

---

**Space is limited so please be prepared to use your trailer**

1. Entries: There is no limit to the number of animals an exhibitor may enter in the Open Boer Goat Show. All entries should be postmarked by August 31, 2007. The entry fee will be \$10.00 per goat. Shavings will not be provided.
2. Registration: All goats six months or older must be registered with the International Boer Goat Association, Inc., United States Boer Goat Association, Canadian Boer Goat Association or American Boer Goat Association. Original registration papers must be shown to superintendent at check-in. No copies will be accepted. Animals under six months of age must have a stamped duplicate or faxed duplicate application showing date received by the International Boer Goat Association Inc., United States Boer Goat Association, Canadian Boer Goat Association or American Boer Goat Association.
3. Eligibility: This show is open to all International Boer Goat Association, Inc. registered goats, ABGA, USBGA or CBGA registered goats. All goats must have a health certificate dated within 150 days of the show!!!
4. Ownership: Proof of ownership shall be the name on the registration document. Persons showing animals whose registration certificates have signed transfer that have not been processed by the International Boer Goat Association, Inc., will be showing the animal for the person listed on the certificate.
5. Classes: Animals will be shown by age according to the registration certificate. Ages will be based from September 8<sup>th</sup>, 2007.
6. Grand Champions will be chosen from the first place animals in the preceding individual classes. Reserve Grand Champion will be selected from the remaining first place animals plus the second place winner from the individual class from which the Grand Champion was chosen.
7. The judge's decisions are final.
8. International Boer Goat Association Rules will prevail.

Questions or comments may be directed to Shaun Jackson at 859-257-9511.

**Premiums:**

Premiums will be paid to the 1<sup>st</sup>, 2<sup>nd</sup>, and 3<sup>rd</sup> place winners in each regular class.

1<sup>st</sup> - \$15.00

2<sup>nd</sup> - \$10.00

3<sup>rd</sup> - \$5.00

**Wash Rack:** There will **NOT** be a wash facility at our station, please have your animals ready for show upon arrival on the grounds.

## **Regular Classes:**

### Percentage Boer Does:

Class 1	Junior Percentage Doe, 0 to under 3 months
Class 2	Junior Percentage Doe, 3 to under 6 months
Class 3	Junior Percentage Doe, 6 to under 9 months
Class 4	Junior Percentage Doe, 9 to under 12 months
	** Junior Percentage Doe - Grand Champion
	** Junior Percentage Doe - Reserve Champion
Class 5	Yearling Percentage Doe, 12 to under 16 months
Class 6	Yearling Percentage Doe, 16 to under 20 months
Class 7	Yearling Percentage Doe, 20 to under 24 months
	** Yearling Percentage Doe - Grand Champion
	** Yearling Percentage Doe - Reserve Champion
Class 8	Senior Percentage Doe, 24 to under 36 months
Class 9	Senior Percentage Doe, 36 to under 48 months
Class 10	Senior Percentage Doe, 48 months and over
	** Senior Percentage Doe - Grand Champion
	** Senior Percentage Doe - Reserve Champion
	Overall Grand Champion Percentage Doe
	Overall Reserve Champion Percentage Doe

### Fullblood / Purebred Does

Class 11	Junior Fullblood Doe, 0 to under 3 months
Class 12	Junior Fullblood Doe, 3 to under 6 months
Class 13	Junior Fullblood Doe, 6 to under 9 months
Class 14	Junior Fullblood Doe, 9 to under 12 months
	** Junior Fullblood Doe - Grand Champion
	** Junior Fullblood Doe - Reserve Champion
Class 15	Yearling Fullblood Doe, 12 to under 16 months
Class 16	Yearling Fullblood Doe, 16 to under 20 months
Class 17	Yearling Fullblood Doe, 20 to under 24 months
	** Yearling Fullblood Doe - Grand Champion
	** Yearling Fullblood Doe - Reserve Champion
Class 18	Senior Fullblood Doe, 24 to under 36 months
Class 19	Senior Fullblood Doe, 36 to under 48 months
Class 20	Senior Fullblood Doe, 48 months and over
	** Senior Fullblood Doe - Grand Champion
	** Senior Fullblood Doe - Reserve Champion
	Overall Grand Champion Fullblood Doe
	Overall Reserve Champion Fullblood Doe

Fullblood / Purebred Bucks

Class 21 Junior Fullblood Buck, 0 to under 3 months  
Class 22 Junior Fullblood Buck, 3 to under 6 months  
Class 23 Junior Fullblood Buck, 6 to under 9 months  
Class 24 Junior Fullblood Buck, 9 to under 12 months  
\*\* Junior Fullblood Buck - Grand Champion  
\*\* Junior Fullblood Buck - Reserve Champion  
Class 25 Yearling Fullblood Buck, 12 to under 16 months  
Class 26 Yearling Fullblood Buck, 16 to under 20 months  
Class 27 Yearling Fullblood Buck, 20 to under 24 months  
\*\* Yearling Fullblood Buck - Grand Champion  
\*\* Yearling Fullblood Buck - Reserve Champion  
Class 28 Senior Fullblood Buck, 24 to under 36 months  
Class 29 Senior Fullblood Buck, 36 to under 48 months  
Class 30 Senior Fullblood Buck, 48 months and over  
\*\* Senior Fullblood Buck - Grand Champion  
\*\* Senior Fullblood Buck - Reserve Champion

Overall Grand Champion Fullblood Buck  
Overall Reserve Champion Fullblood Buck