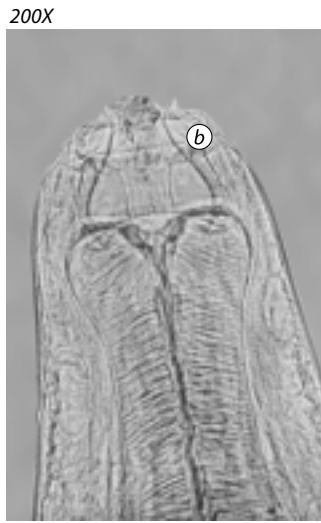


Size: small  
Preferred site: dorsal colon  
Represents <1% of population

*Parapoteriostomum* spp.  
***Parapoteriostomum (Par.) euproctus***  
(formerly *Cylicodontophorus euproctus*)



**Figure 23A**  
Head  
a. bean-like walls (lateral)



**Figure 23B**  
Head  
b. lyre-shaped walls (dorsoventral)



**Figure 23C**  
Female tail



**Figure 23D**  
Male tail

This species is very rare but easy to identify because the walls of its buccal capsule resemble a **lyre** when viewed dorsoventrally. **Laterally**, the walls are **bean-like**, but this view rarely presents itself. Identifying this species may require you to roll it by nudging the coverslip with a probe or a pair of tweezers until all views are seen.

The **female tail** is quite **long** and **tapered** compared to most other species. The male bursa is broad and “**cumbersome**” with a short dorsal ray.

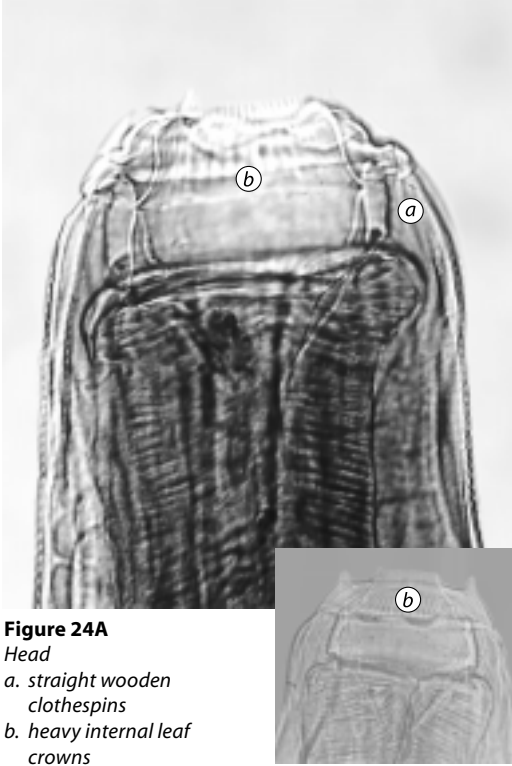
**Walls of the Buccal Capsule:**

- resemble a lyre when viewed dorsoventrally
- laterally, they are bean-like (this view is rare)

Size: medium  
Preferred site: dorsal colon  
Represents <1% of population

*Parapoteriostomum* spp.  
***Parapoteriostomum mettami***  
(formerly *Cylicodontophorus mettami*)

50  $\mu$ m (inset: 200X)



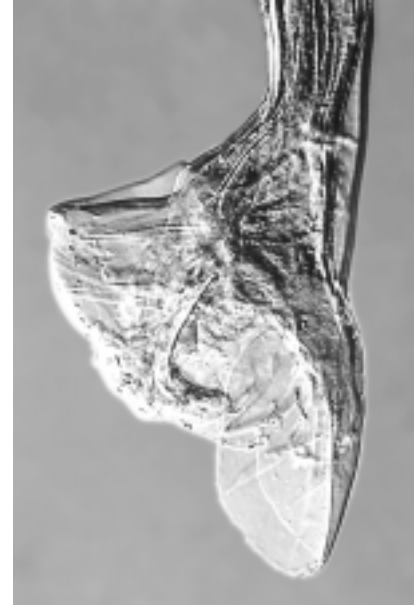
**Figure 24A**  
Head  
a. straight wooden clothespins  
b. heavy internal leaf crowns

100  $\mu$ m



**Figure 24B**  
Female tail

100  $\mu$ m



**Figure 24C**  
Male tail

This is a **stout worm** with a **rectangular buccal capsule**. The walls of the capsule resemble old-fashioned **straight wooden clothespins** (slightly bowed). The leaves of the internal crown are very broad.

The female tail is quite ugly, lumpy on the end terminating in a spike, whereas the male tail, not so much a long dorsal ray, is quite extravagant in the way it is splayed out.

**Walls of the Buccal Capsule:**

- resemble old-fashioned straight wooden clothespins that are slightly bowed

**Other Distinguishing Characteristics:**

- has very broad leaves on the internal crown