

Size: large
Preferred site: dorsal colon
Represents 1% of population

Poteriostomum spp.

Poteriostomum (*Pot.*) *imparidentatum*

50 μ m (inset: 200X)

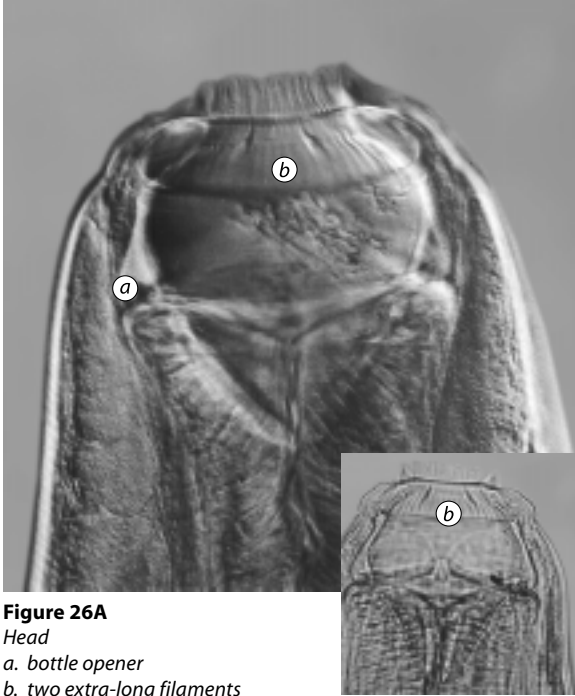


Figure 26A

Head

a. bottle opener

b. two extra-long filaments

100 μ m

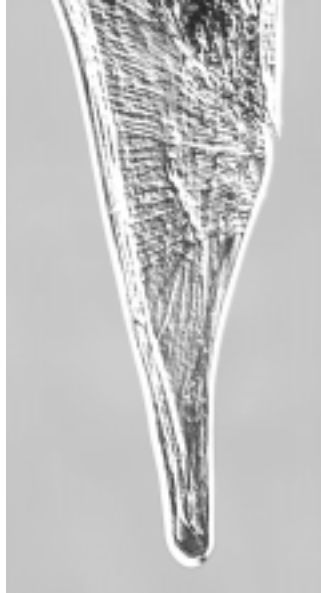


Figure 26B

Female tail

100 μ m

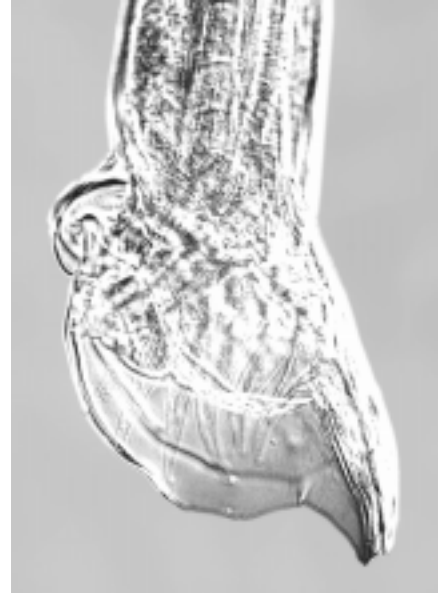


Figure 26C

Male tail

I will discuss *Poteriostomum* (*Pot.*) *imparidentatum* and *Poteriostomum ratzii* (page 28) together, although *Pot. imparidentatum* is a lot more common than *Pot. ratzii*.

Poteriostomum imparidentatum is large, and its size simplifies its identification because most other species can be eliminated on size alone. For some reason, the buccal capsule walls of *Pot. imparidentatum* never quite seem to match (of course, they do, but maybe because of the way this species dies, it turns about halfway between dorsoventral and lateral). The base is broad, bows out just a little, and comes back together anteriorally in a little knoblike structure. The walls resemble a **punch-type metal can opener** or a big stirring spoon with a rounded indentation in the tip of the spoon. What always identifies this species are the **extra-long filaments** interspersed with the shorter ones in the internal crown that extend to the base of the external crown. There are six of these filaments, but **usually only two can be seen** at once. Sometimes, it is necessary to focus up and down to see them plainly.

The female tail is quite spectacular in that it is very long, tapering but fat. Once the parasite is dead, the tail **usually curls and wrinkles**. The male bursa is quite broad, making the dorsal ray appear very short in comparison to its size.

Walls of the Buccal Capsule:

- never quite seem to match
- base is broad, bows out just a little, and comes back together anteriorally in a little knoblike structure
- resemble a punch-type metal can opener

Other Distinguishing Characteristics:

- two conspicuous extra-long filaments interspersed with the shorter ones in the internal crown
- large size; most other species can be eliminated on size alone

Size: large
Preferred site: dorsal colon
Represents <1% of population

Poteriostomum spp.
Poteriostomum ratzii

50 μ m

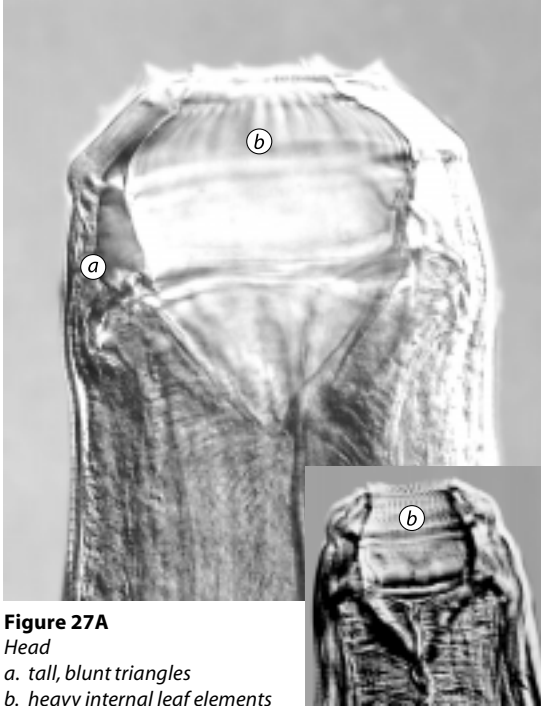


Figure 27A
Head
a. tall, blunt triangles
b. heavy internal leaf elements

50 μ m

50 μ m



Figure 27B
Female tail

100 μ m

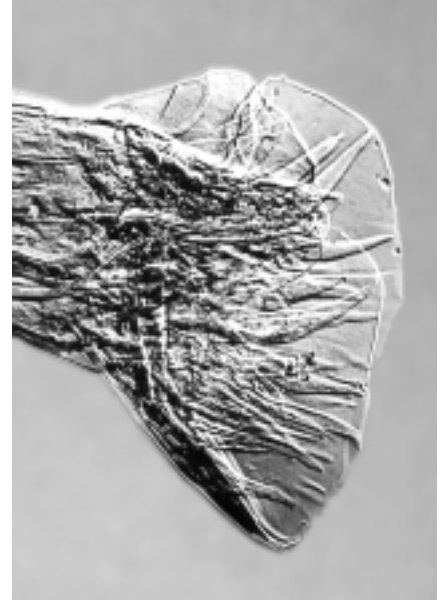


Figure 27C
Male tail

In contrast to *Poteriostomum* (*Pot.*) *imparidentatum*, this species' capsule walls are completely **symmetrical**; in fact, they look like a matched set. They look like **two large arrowheads** or tall triangles with smooth edges, broad at the base and tapering into a rounded tip at the anterior end. Most evident are the very **broad and long elements of the internal crown** that extend to the base of the external leaf crown.

The female tail is long and gradually tapers smoothly to a little rounded tip but not a sharp point. The male bursa is very broad; the dorsal ray is not very long, considering the size of the bursa.

Walls of the Buccal Capsule:

- are completely symmetrical
- look like two large arrowheads or blunt triangles

Other Distinguishing Characteristics:

- very broad and long elements of the internal crown that extend to the base of the external leaf crown