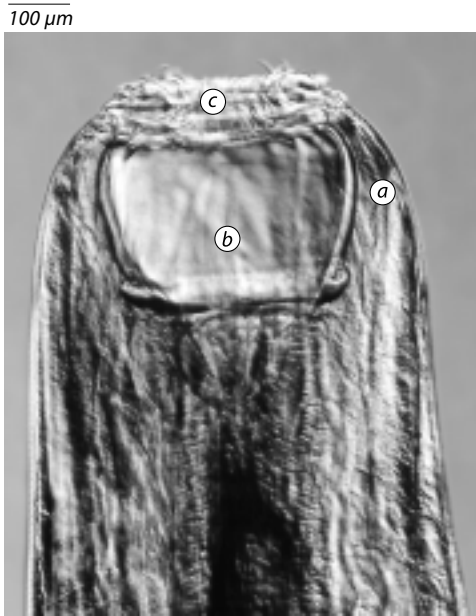


Size: large  
Preferred site: ventral colon  
Represents <1% of population

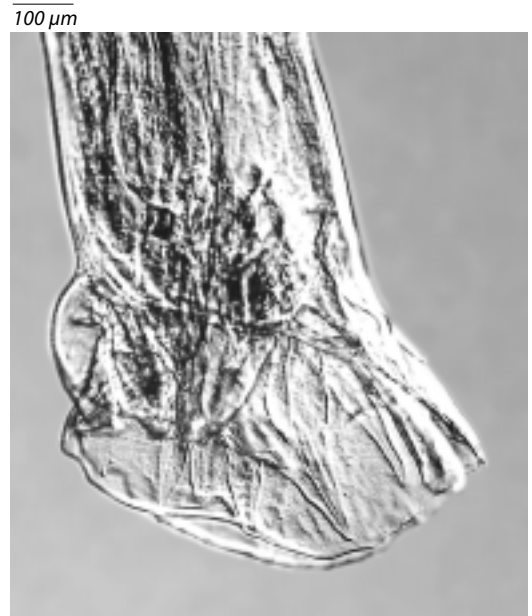
*Oesophagodontus sp.*  
*Oesophagodontus (O.) robustus*



**Figure 29A**  
Head  
a. horseshoe-shaped walls  
b. empty buccal capsule  
c. heavy external leaf elements



**Figure 29B**  
Female tail



**Figure 29C**  
Male tail

This worm is **very large**; hence, its name. It approximates *Strongylus vulgaris* in size and easily can be **misidentified grossly** as *S. vulgaris*. However, closer inspection reveals that *O. robustus* does not have a sharply pointed female tail like *S. vulgaris*; the tail actually comes to an abrupt end while still “fat” and has a little nipple on the end. *Oesophagodontus robustus* has a very large buccal capsule, much like *S. vulgaris*, but not as round; the **walls are thin** and **resemble a large horseshoe**. Also, *O. robustus* has **no teeth** or any other visible structure inside the buccal capsule. Very prominent are the really **big, broad elements of the external crown**.

The male bursa is very large with an extremely short dorsal ray.

**Walls of the Buccal Capsule:**

- walls are thin and resemble a large horseshoe

**Other Distinguishing Characteristics:**

- very large, befitting its name
- female tail has a small nipple
- has a very large buccal capsule, much like *S. vulgaris*, but not as round
- has no teeth or any other visible structure inside the buccal capsule
- elements of the external crown are very prominent