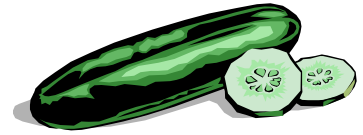


# Fresh Cucumber Marketing Fact Sheet

<http://www.uky.edu/Ag/HortBiz/>



## Production

- About 60% of cucumber use is in fresh form
- Fresh cucumber prices are lowest at production peaks in June
- Adding value by some fresh cut processing (slicing) can increase profits
- KY producers have realized additional profits from fall and trellised cucumber production

## U.S. Fresh Market Cucumber Production

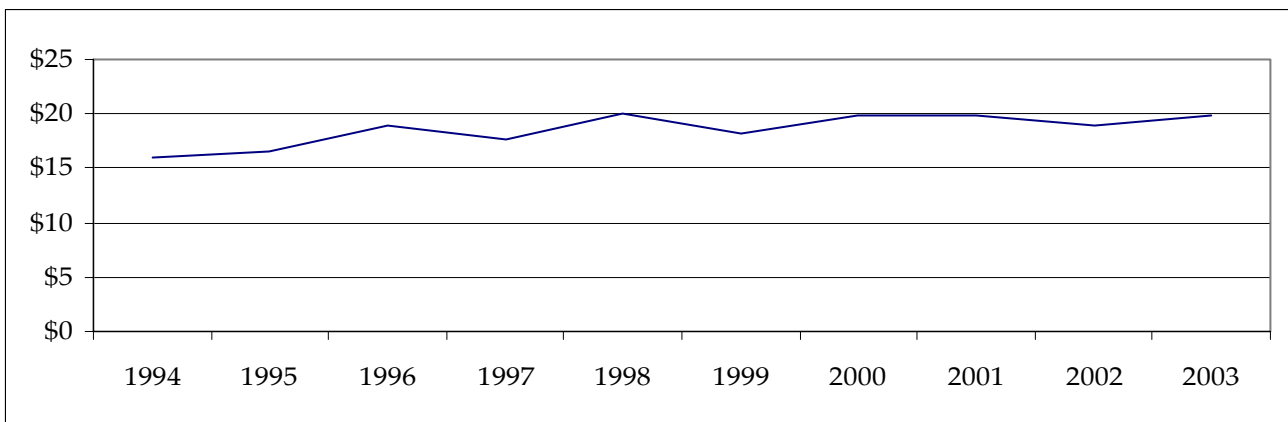
	1998	1999	2000	2001	2002	2003	2004*
Acres Harvested	56,530	58,600	52,130	52,780	54,900	54,900	55,000
Yield Per Acre (cwt)	197	201	209	197	199	174	200
Production (1,000 cwt)	11,137	11,770	10,873	10,392	10,939	9,569	11,000
Value per Cwt	\$20.11	\$18.26	\$ 19.93	\$ 19.79	\$ 24.75	\$ 19.78	\$ 18.97
Total Value (1,000 dollars)	224,018	214,935	216,704	205,689	270,784	189,317	210,000

Source: USDA/ERS.

\*UK estimates for 2004 based on NASS projections.

## U.S. Cucumber Season Average Prices

Dollars per cwt.



Source: USDA/ERS Vegetables and Melons Report

## Kentucky Fresh Market Cucumber Breakeven Prices

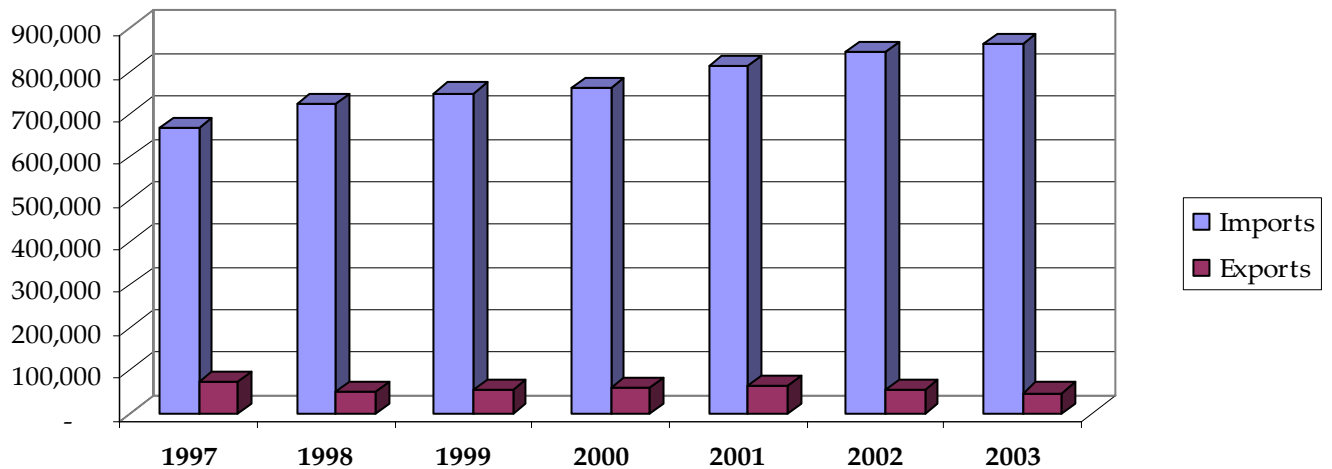
	-----yield per acre-----							
50 lb box	300	350	400	450	500	550	600	650
Breakeven Price*	\$ 12.52	\$ 10.93	\$ 9.74	\$ 8.81	\$ 8.07	\$ 7.47	\$ 6.96	\$ 6.54

\*Breakeven price per box for return to land, capital, and management

Source: 2004 UK Vegetable Budget Updates

## TRADE

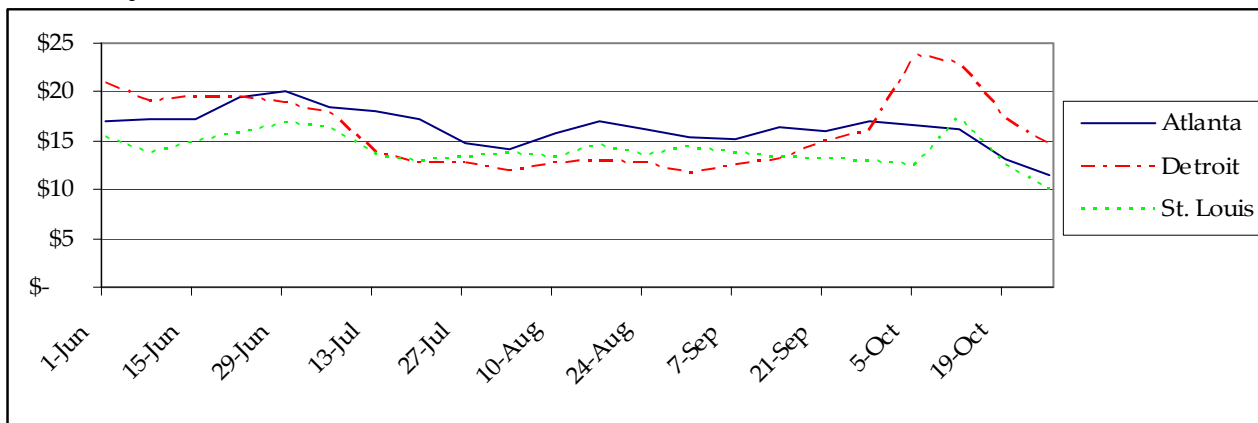
(1,000 pounds)



Source: USDA/ERS Vegetables and Melons Situation Outlook and Yearbook

## Weekly Terminal Market Price Trends

(\$ per 1 1/9 bushel, medium)



Source: Median Weekly Price Ranges, UF/IFAS Marketing Information System 2000-2005

### Information Sources

Fresh Market Cucumbers Commodity Highlight (USDA/ERS)

<http://www.ers.usda.gov/Briefing/Vegetables/vegpdf/CukeHighlight.pdf>

USDA Vegetable and Melons Report

<http://www.ers.usda.gov/publications/vgs/>

UF Marketing Information System

<http://mids.ifas.ufl.edu/>

UK Horticulture Budgets

<http://www.uky.edu/Ag/HortBiz/pubs.html>

NASS Vegetable Reports

<http://usda.mannlib.cornell.edu/reports/nassr/fruit/pvg-bban/>

Prepared by Matt Ernst (mernst@uky.edu) and Tim Woods (tawoods@uky.edu), University of Kentucky Department of Agricultural Economics, 400 Charles E. Barnhart Building, Lexington, KY, 40546-0276, Phone 859-257-5762, Fax 859-323-1913.

<http://www.uky.edu/Ag/AgEcon>

*Educational programs of the Kentucky Cooperative Extension Service serve all people regardless of race, color, age, sex, religion, disability, or national origin.*