



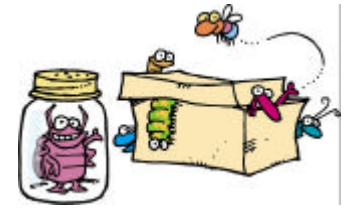
(Student Handout)

Name \_\_\_\_\_

## CHOOSE AN INSECT

### **Introduction:**

Define and describe the characteristics of an insect.  
What is the name of the insect you have chosen?  
Why did you choose this critter?



10 points

### **Body**

What does your critter look like?  
Where is it found (habitat)?  
What does it eat or who eats it? (Niche)  
What kind of lifestyle or lifecycle does it have?  
What are the mating habits? How many generations are there a year?  
How long do they survive?  
Why is it important to life on earth?  
Is it a pest or beneficial?

30 points

### **Conclusion**

What are this critters' prospects, is it endangered?  
How do humans effect this organism?  
What was the most interesting fact or facts you learned about your insect?

10 points

### **Visual Aid**

A poster with pictures, descriptions of where and how it lives are some ideas for a visual aid.

25 points

### **Some Internet addresses**

<http://www.uky.edu/Agriculture/Entomology/enthp.htm>

<http://arnica.csustan.edu/site.asp>

<http://www.colostate.edu/Depts/Entomology/ent.html>

<http://entweb.clemson.edu/>

<http://www.monarchwatch.org/>

### **Choose an Insect (Some Suggestions)**

Honey bee

Monarch

Painted lady

Grasshopper

Cricket

Flea

Ladybug

Bean beetle

Praying mantid

Walking stick

Cockroach

Termite

Katydid

Rhinocerus beetle

Dung beetle

Ants

Wasp

Horn worms

Gypsy moth

Silk worms

Stink bug

Dragonfly

House fly

Hummingbird moth