

SOYBEAN RUST: Symptoms



▲ Pustules erupt all over the underside of the leaf and particularly along veins (as seen by using transmitted light).

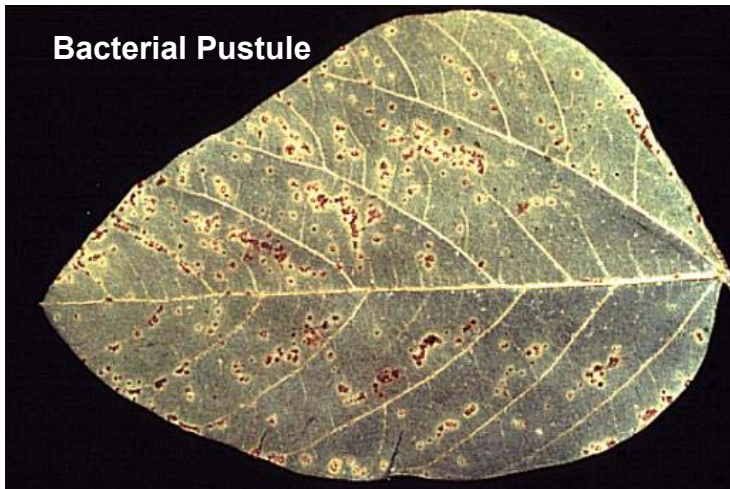


▶ Tan lesions (uredia) as seen with 20X lens.



▲ Moderate infection is not easily seen from a distance.

Early on, soybean rust is easily confused with other diseases.



Bacterial pustule (*Xanthomonas campestris* pv. *phaseoli*) on soybean.
Courtesy Joseph Krausz, TAES - 1996.