

Eggplant Marketing Fact Sheet

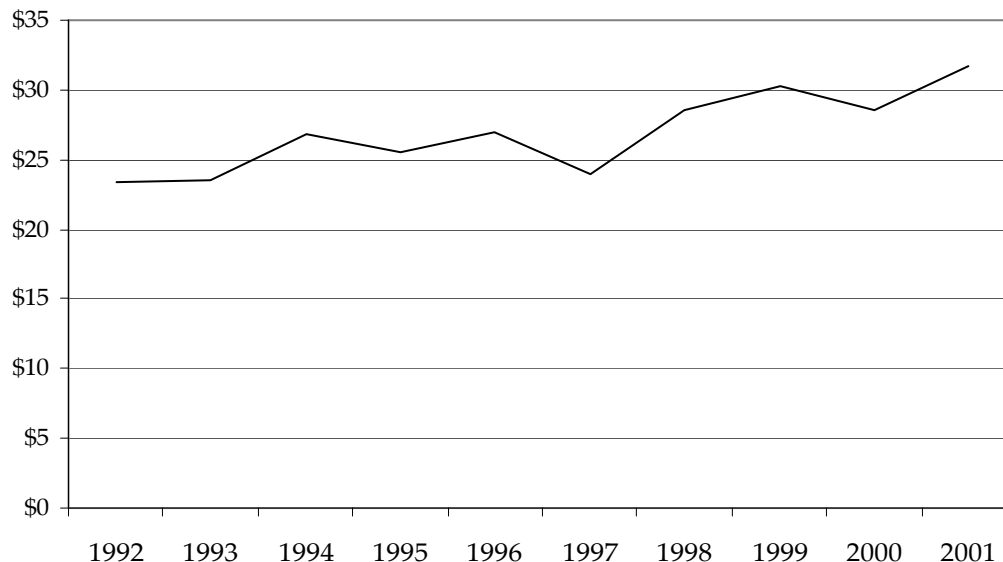
<http://www.uky.edu/Ag/HortBiz/>

Production

	1997	1998	1999	2000	2001	2002
Acres Harvested	3,200	3,200	2,800	6,380	5,700	5,800
Yield Per Acre (cwt)	248	240	254	263	275	259
Production (1,000 cwt)	793	768	712	1,658	1,354	1,500
Value per Cwt	\$23.90	\$28.53	\$30.19	\$28.63	\$31.73	\$28.50
Total Value (1,000 dollars)	\$18,980	\$21,912	\$21,492	\$43,445	\$36,599	\$42,750

Source: USDA/ERS

Annual U.S. Eggplant Season-Average Price (\$/cwt.)



Source: USDA/ERS

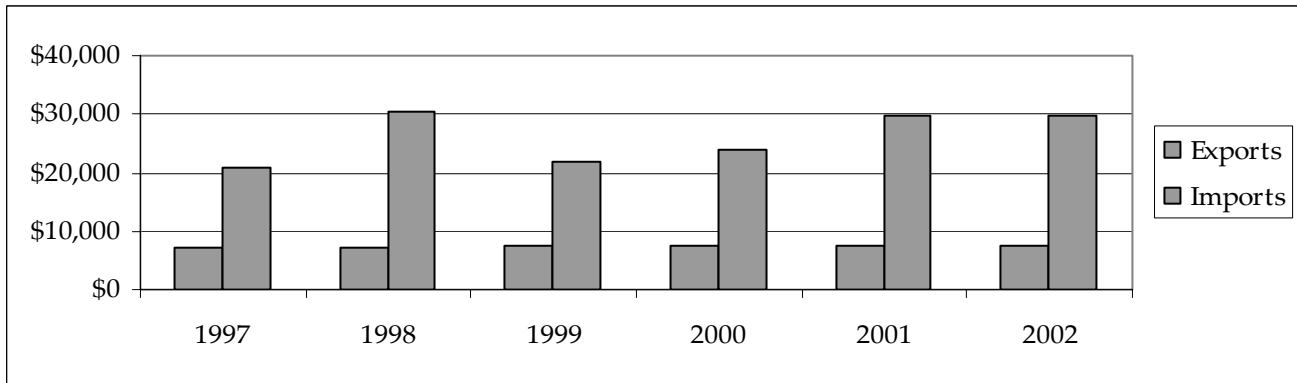
2003 Kentucky Eggplant Breakeven Prices

	-----yield per acre-----							
	400	500	600	700	800	900	1000	1100
20-24 Count Box								
Breakeven price*	\$ 10.50	\$ 8.76	\$ 7.60	\$ 6.85	\$ 6.15	\$ 5.67	\$ 5.28	\$ 4.97

*Price required for \$0 return to land and management.

Source: UK Commercial Vegetable Budget Updates

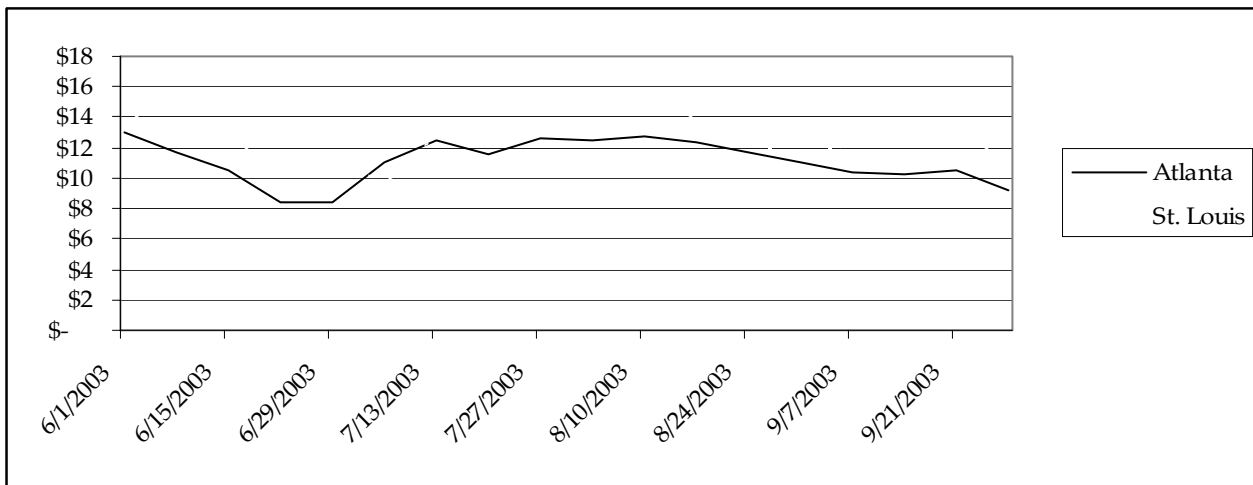
U.S. Fresh Eggplant Trade



Source: USDA Vegetables and Melons Situation and Outlook Yearbook

2003 Weekly Terminal Market Prices

(\$ per 50 lb. carton medium eggplant)



Source: UF/IFAS Market Information System

Information Sources

USDA Vegetable and Melons Report

<http://www.ers.usda.gov/publications/vgs/>

UF Marketing Information System

<http://mids.ifas.ufl.edu/>

UK Horticulture Budgets

<http://www.uky.edu/Ag/HortBiz/pubs.html>

NASS Vegetable Reports

<http://usda.mannlib.cornell.edu/reports/nassr/fruit/pvg-bban/>

Prepared by Matt Ernst (mernst@uky.edu) and Tim Woods (tawoods@uky.edu), University of Kentucky Department of Agricultural Economics, 400 Charles E. Barnhart Building, Lexington, KY, 40546-0276, Phone 859-257-5762, Fax 859-323-1913.
<http://www.uky.edu/Ag/AgEcon>

Educational programs of the Kentucky Cooperative Extension Service serve all people regardless of race, color, age, sex, religion, disability, or national origin.