

Peach Marketing Fact Sheet

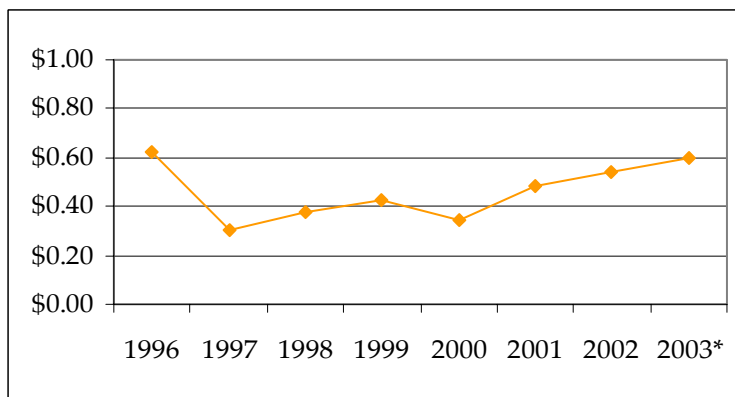
<http://www.uky.edu/Ag/HortBiz>

U.S. Peach Production Data

	1998	1999	2000	2001	2002	2003*
Bearing Acreage	160,300	157,400	155,400	151,700	152,400	154,000
Pounds Per Acre	14,976	16,046	16,602	16,045	16,903	17,032
Total Million Lbs Production	2,401	2,526	2,580	2,434	2,576	2,623
Cash Receipts Per Acre	\$2,786	\$3,081	\$3,100	\$3,252	\$3,308	3,279
Cash Receipts (\$1,000)	\$446,534	\$462,836	\$481,716	\$493,2981	\$504,167	505,000

Source: USDA/ERS, NASS *UK Estimates for 2003 based on ERS preliminary data

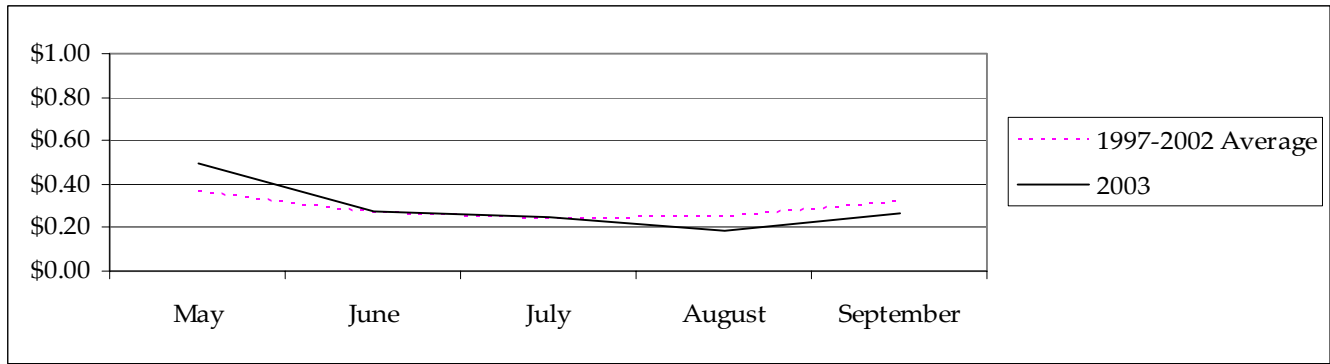
Kentucky Peach Prices (million pounds)



Peach prices received by KY producers have increased steadily since 1996 due to strong markets and increased direct market peach sales.

Source: USDA; NASS Noncitrus Fruits and Nuts 2003 Preliminary Summary

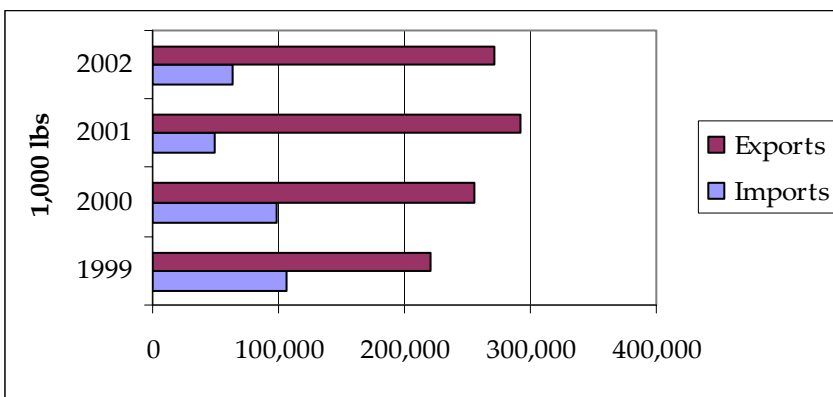
Fresh Peaches: Monthly Prices Received By Growers



Source: USDA/ERS Fruit and Tree Nuts Situation and Outlook Yearbook, October 2003

TRADE

U.S. Fresh Peach Trade



Source: USDA/ERS Fruit and Tree Nuts Situation and Outlook Yearbook, October 2003

Information Sources

USDA/ERS Fruit and Tree Nuts Situation and Outlook Yearbook

<http://www.ers.usda.gov/Briefing/FruitAndTreeNuts/>

U.S. Census of Agriculture

<http://www.nass.usda.gov/census/>

Prepared by Matt Ernst (mernst@uky.edu) and Tim Woods (tawoods@uky.edu), University of Kentucky Department of Agricultural Economics, 400 Charles E. Barnhart Building, Lexington, KY, 40546-0276, Phone 859-257-5762, Fax 859-323-1913.

<http://www.uky.edu/Ag/AgEcon>

Educational programs of the Kentucky Cooperative Extension Service serve all people regardless of race, color, age, sex, religion, disability, or national origin.