

Summer Squash Marketing Fact Sheet

<http://www.uky.edu/Ag/HortBiz/>

Market Notes

Zucchini, yellow crookneck, and yellow straightneck squash make up the bulk of fresh summer squash shipments in the United States

Southern areas favor yellow crookneck squash consumption, while northern areas tend to favor yellow straightneck squash

Fresh market squash shipments rebounded by 59% in July 2002 from very low (due to drought conditions) July 2001 levels

Selected Fresh Market Squash Production By State

2001-2003

(1,000 cwt.)

State	2001	2002	2003
California	1,520	1,501	1,463
Florida	1,392	1,500	1,400
Georgia	988	1,428	1,244
Michigan	1,278	1,564	1,178
New Jersey	466	455	314
New York	624	697	874
North Carolina	390	380	281
Ohio	204	156	168
Oregon	503	695	672
South Carolina	154	143	132
Tennessee	51	115	79
Texas	235	156	256

Source: USDA/NASS

2003 Kentucky Yellow Crookneck Squash Breakeven Prices

5/9 Bu. Boxes	7001	8001	9001	9501	10001	1,0501	1,1001	1,2001
Price*	\$7.32	\$6.54	\$5.94	\$5.69	\$5.46	\$5.17	\$5.07	\$4.74

* Price required for \$0 return to land, capital, and management in 2003 KY Commercial Vegetable Updates

Information Sources

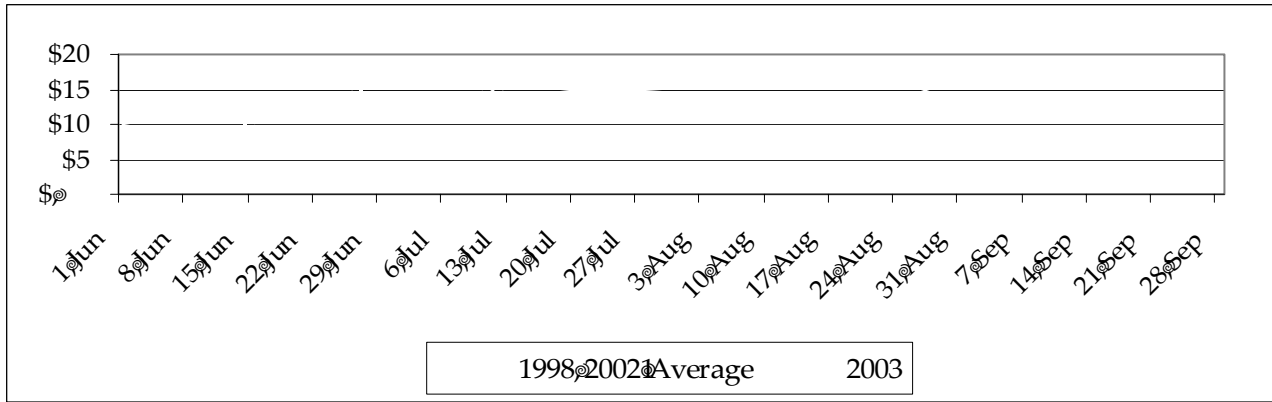
USDA Vegetable and Melons Report
UK Horticulture Budgets

<http://www.ers.usda.gov/publications/vgs/>
<http://www.uky.edu/Ag/HortBiz/pubs.html>

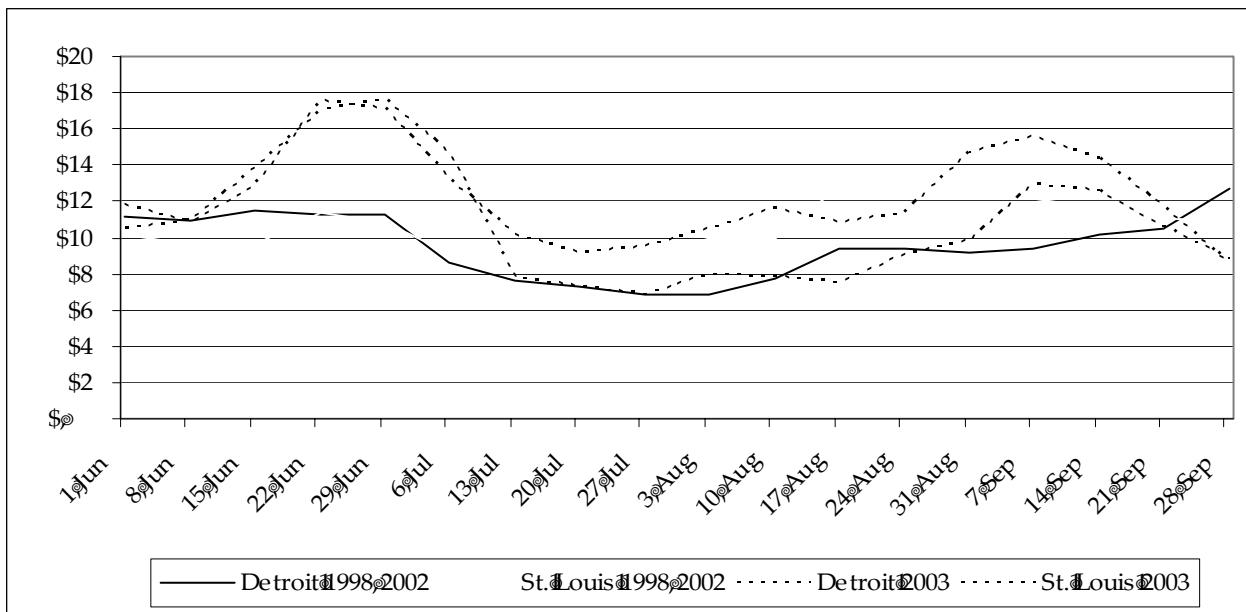
Terminal Market Prices

Price data available at: <http://mids.ifas.ufl.edu/>

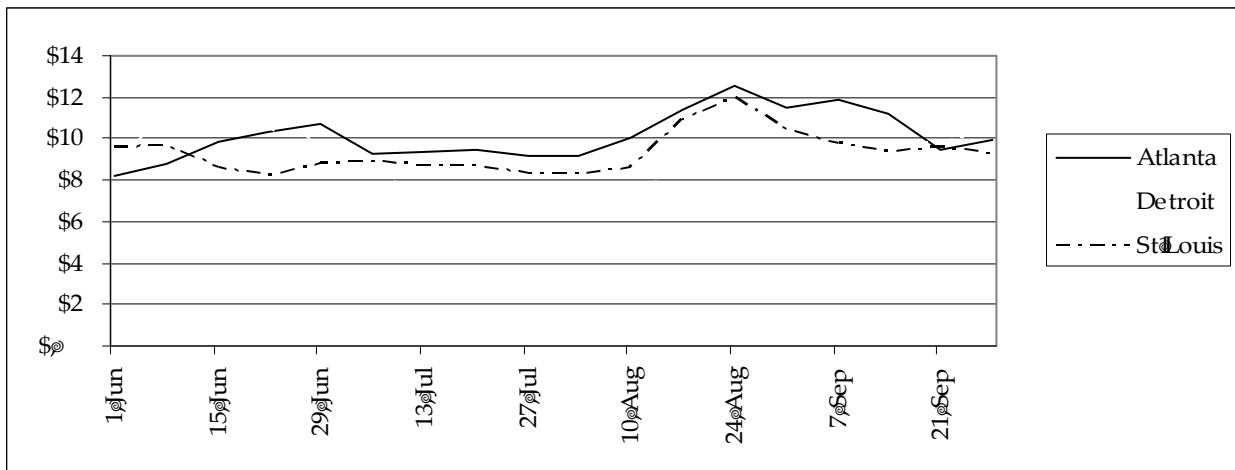
1/2 & 5/9 bu. Yellow Crookneck Squash, Atlanta Terminal



1/2 & 5/9 bu. Yellow Straightneck Squash, Detroit and St. Louis Terminals



1/2 & 5/9 bu. Zucchini Squash, 1999-2003 Terminal Market Price Averages



Prepared by Matt Ernst (mernst@uky.edu) and Tim Woods (tawoods@uky.edu), University of Kentucky Department of Agricultural Economics, 400 Charles E. Barnhart Building, Lexington, KY, 40546-0276, Phone 859-257-5762, Fax 859-323-1913.
<http://www.uky.edu/Ag/AgEcon>

Educational programs of the Kentucky Cooperative Extension Service serve all people regardless of race, color, age, sex, religion, disability, or national origin.