

Fresh Market Tomato Fact Sheet

<http://www.uky.edu/Ag/HortBiz/>



Production

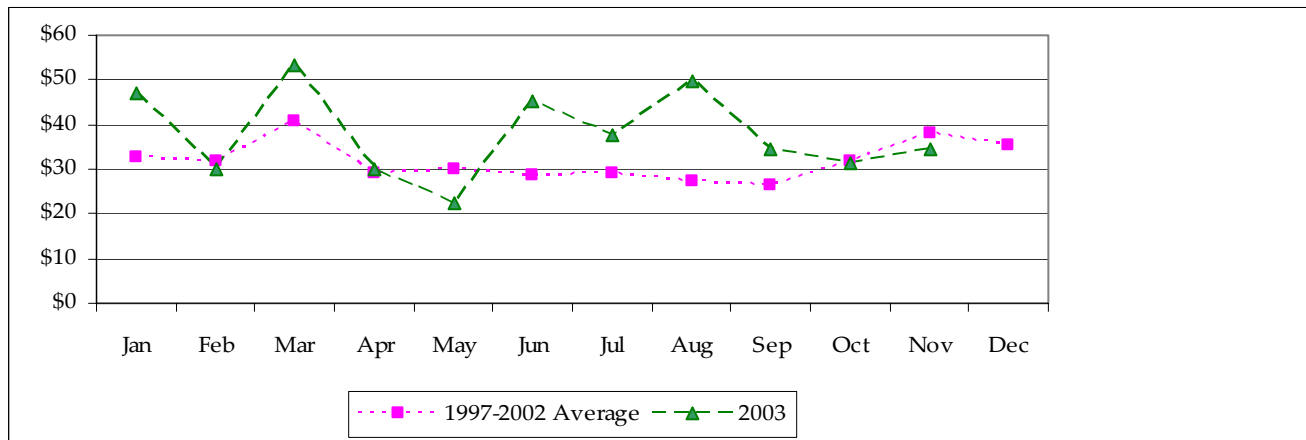
- Tomatoes remain one of the most profitable and popular crop alternatives in KY
- U.S. field-grown tomatoes face increased competition from both domestic and import hothouse varieties
- Fresh tomato prices were up sharply due to supply and production problems in 2003

U.S. Fresh Market Tomato Production Data (USDA/ERS)

	1996	1997	1998	1999	2000	2001	2002
<i>Area Harvested</i>	120,640	115,190	121,710	132,880	123,170	124,250	124,900
<i>Yield Per Acre (cwt)</i>	279	285	268	276	306	286	299
<i>Production (1,000 cwt)</i>	33,634	32,777	32,628	36,735	37,665	35,527	37,302
<i>Value per Cwt</i>	\$28.16	\$31.74	\$35.24	\$25.89	\$30.79	\$30.40	\$31.39
<i>Total Value (\$1,000)</i>	\$947,031	\$1,040,382	\$1,149,713	\$951,046	\$1,159,590	\$1,080,166	\$1,170,922

Source: USDA/ERS

U.S. Fresh Market Tomatoes F.o.b. Shipping Point Prices (\$/cwt)



Source: USDA/ERS



Fresh tomato shipping-point prices hit decade highs for much of the 2003 summer



About 650 acres of tomatoes were grown in Kentucky in 2002, with a 4% increase anticipated for 2003

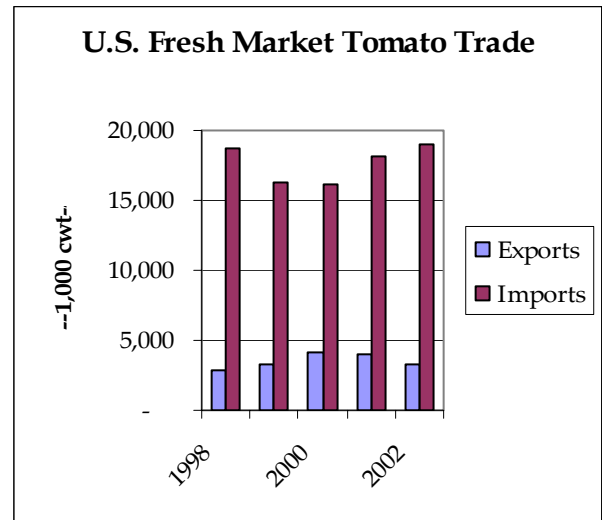


Greenhouse tomato production also expanded in Kentucky during the 2003 season

TRADE DATA

- Mexico is the largest international source for fresh market tomatoes to the U.S.
- A Census Bureau HS import code for greenhouse tomatoes was added in July 2000

Source: USDA/ERS



2003 KY Staked Fresh Tomato Breakeven Prices

	-----yield per acre-----							
25# boxes per acre	1,450	1,500	1,550	1,600	1,650	1,700	1,750	1,800
\$/box*	\$ 7.15	\$ 6.95	\$ 6.76	\$ 6.58	\$ 6.42	\$ 6.26	\$ 6.11	\$ 5.98

*Price required for \$0 to land, capital and management

Source: UK Vegetable Budget Updates

Information Sources

USDA/ERS Tomatoes Briefing Room
 USDA Vegetable and Melons Report
 UF Marketing Information System
 UK Horticulture Budgets
 NASS Vegetable Reports

<http://www.ers.usda.gov/briefing/tomatoes/>
<http://www.ers.usda.gov/publications/vgs/>
<http://mids.ifas.ufl.edu/>
<http://www.uky.edu/Ag/HortBiz/pubs.html>
<http://usda.mannlib.cornell.edu/reports/nassr/fruit/pvg-bban/>

Prepared by Matt Ernst (mernst@uky.edu) and Tim Woods (tawoods@uky.edu), University of Kentucky Department of Agricultural Economics, 400 Charles E. Barnhart Building, Lexington, KY, 40546-0276, Phone 859-257-5762, Fax 859-323-1913.

<http://www.uky.edu/Ag/AgEcon>

Educational programs of the Kentucky Cooperative Extension Service serve all people regardless of race, color, age, sex, religion, disability, or national origin.