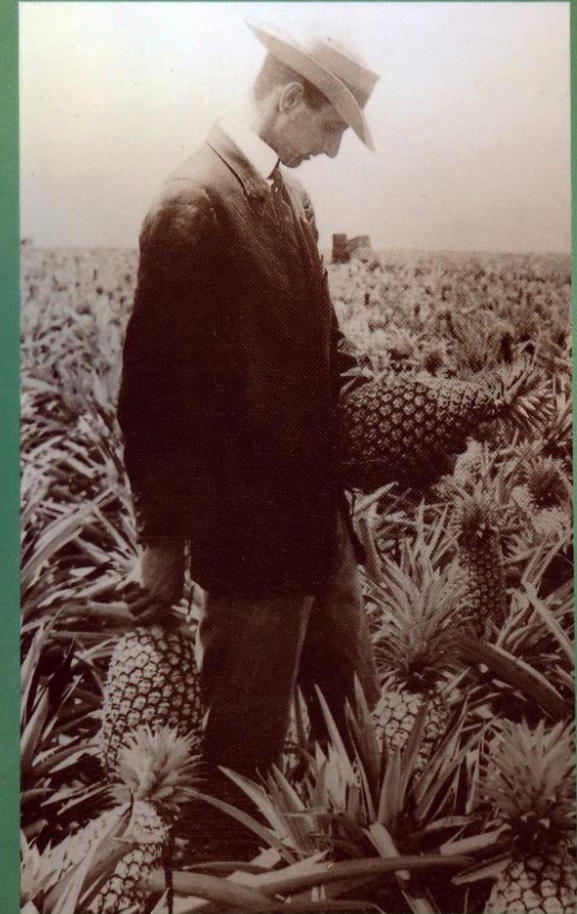


At one time, Dole was the largest pineapple producer in the world established in Hawaii. In 1922, James Dole bought the Island of Lanai for pineapple production. In the 1940s, Dole produced 75% of the world's pineapple crop.



JAMES
DOLE



All aboard the
Pineapple Express
at Dole Plantation.



A recent pineapple planting at Dole.



Pineapple cutting demonstration.



Pineapple is a bromeliad and keeping with this theme, the garden at Dole Plantation has a large bromeliad collection.

