

It was nice to be able to see Monet's paintings in the Paris museums and then see the garden in Giverny that inspired the paintings of water lilies, willow branches, and the Japanese garden.



Water lilies mural from the Orangery museum.

Monet's garden at Giverny.



The artist's
garden at Giverny
by Claude Monet





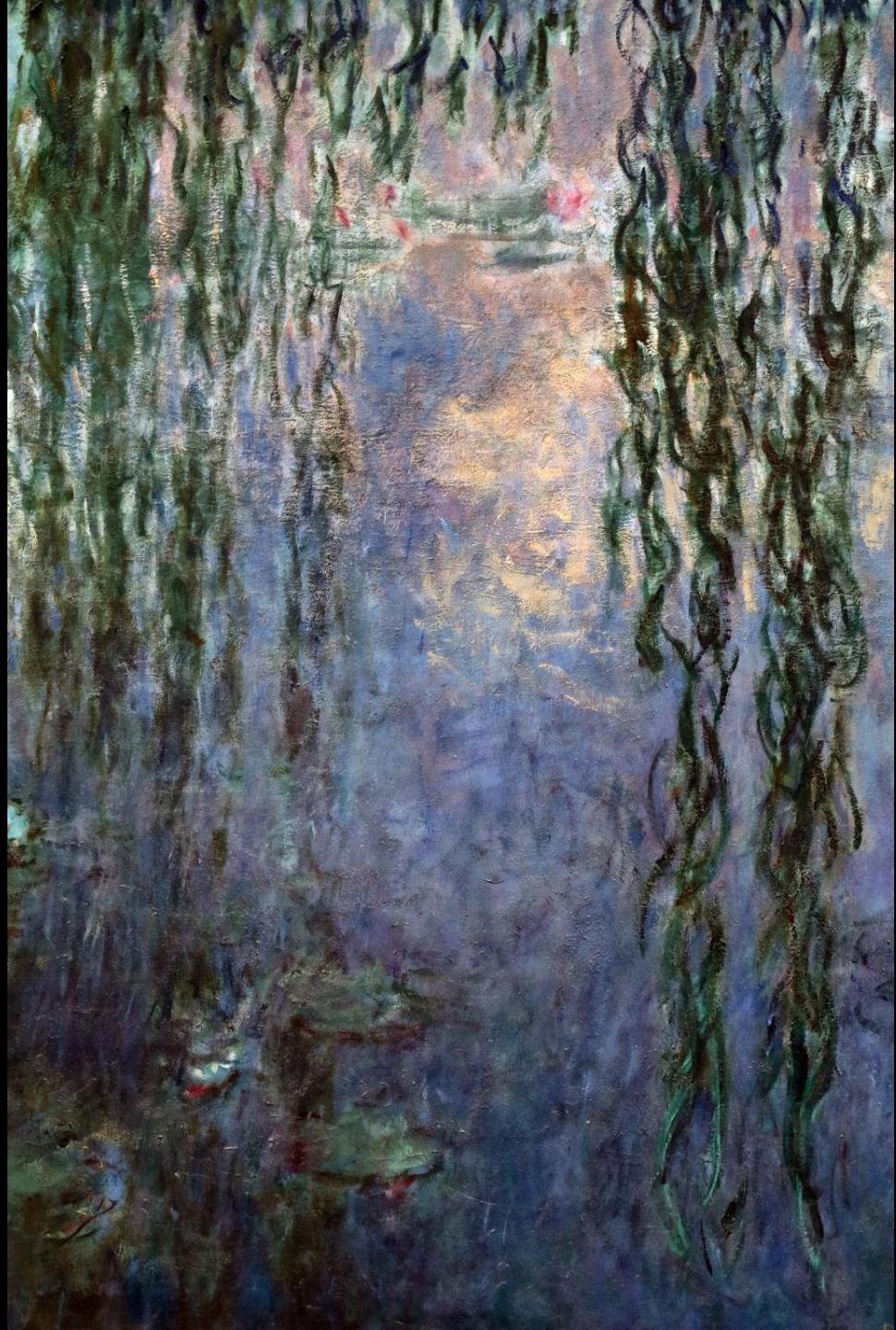


Japanese garden and lily pond.



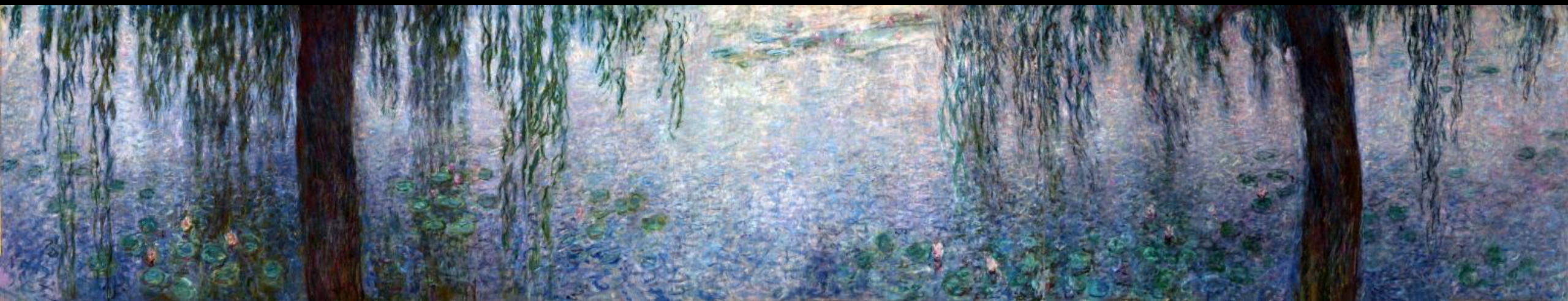


Willows



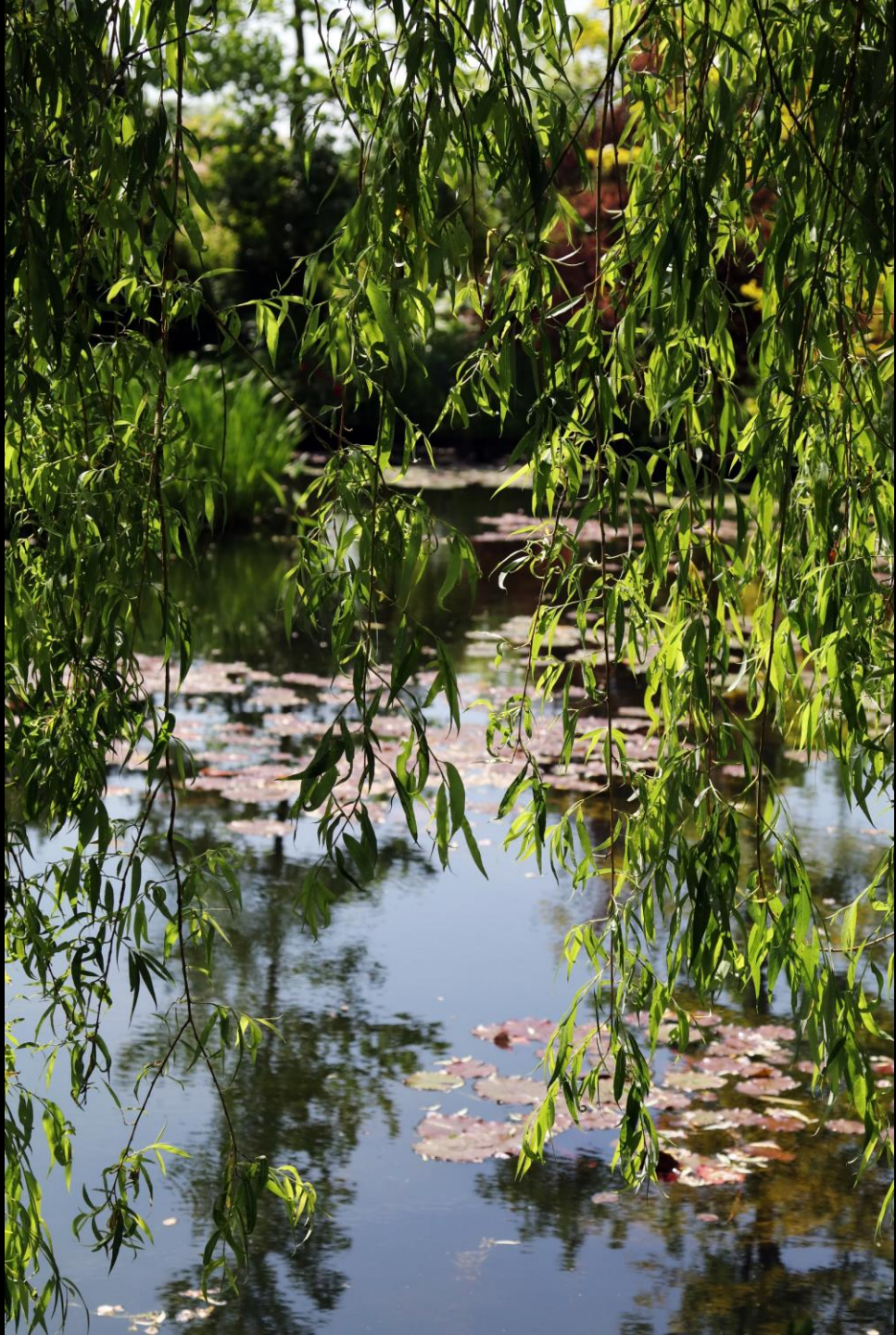
Willows



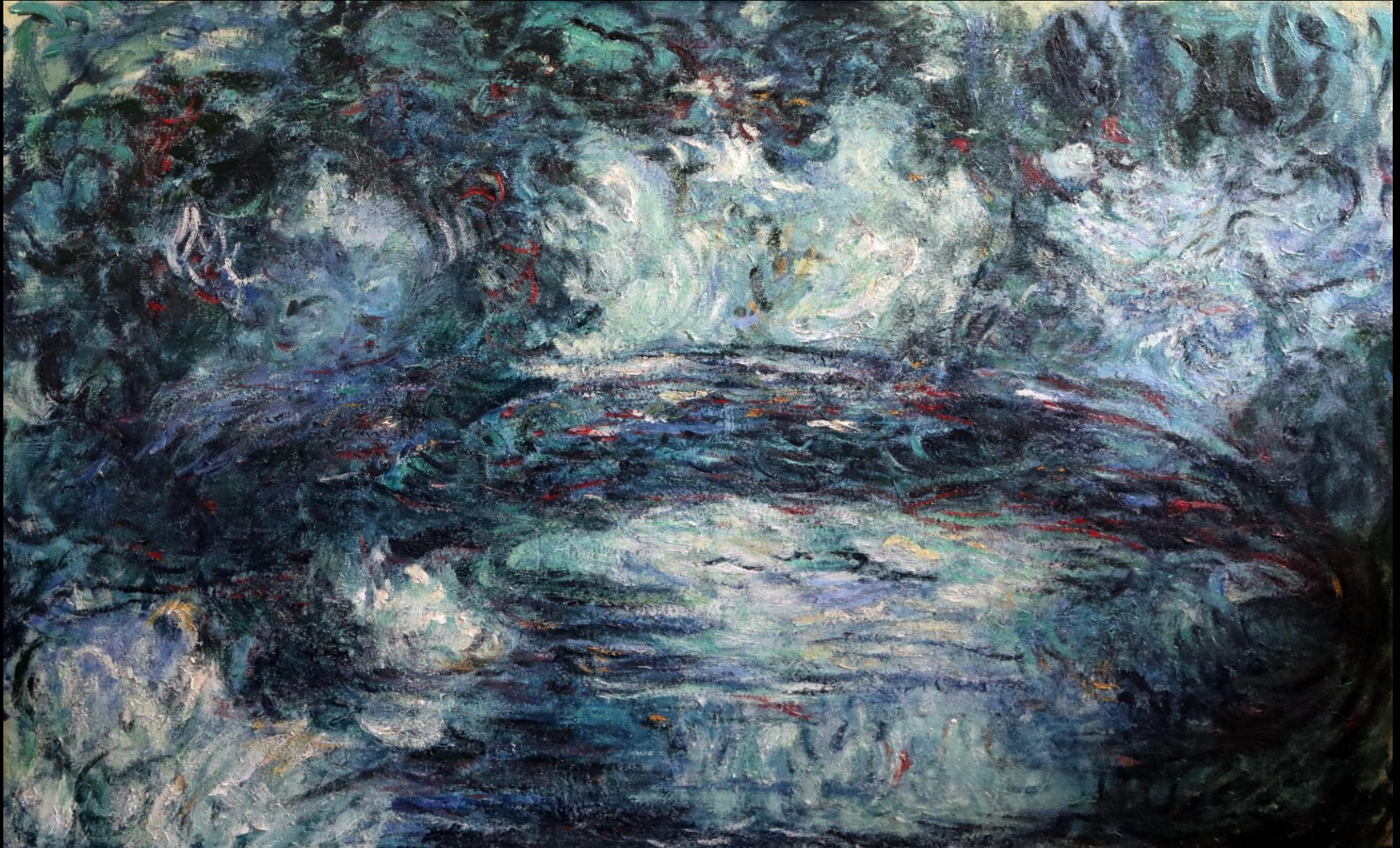








Japanese bridge and wisteria.



Japanese bridge and wisteria.



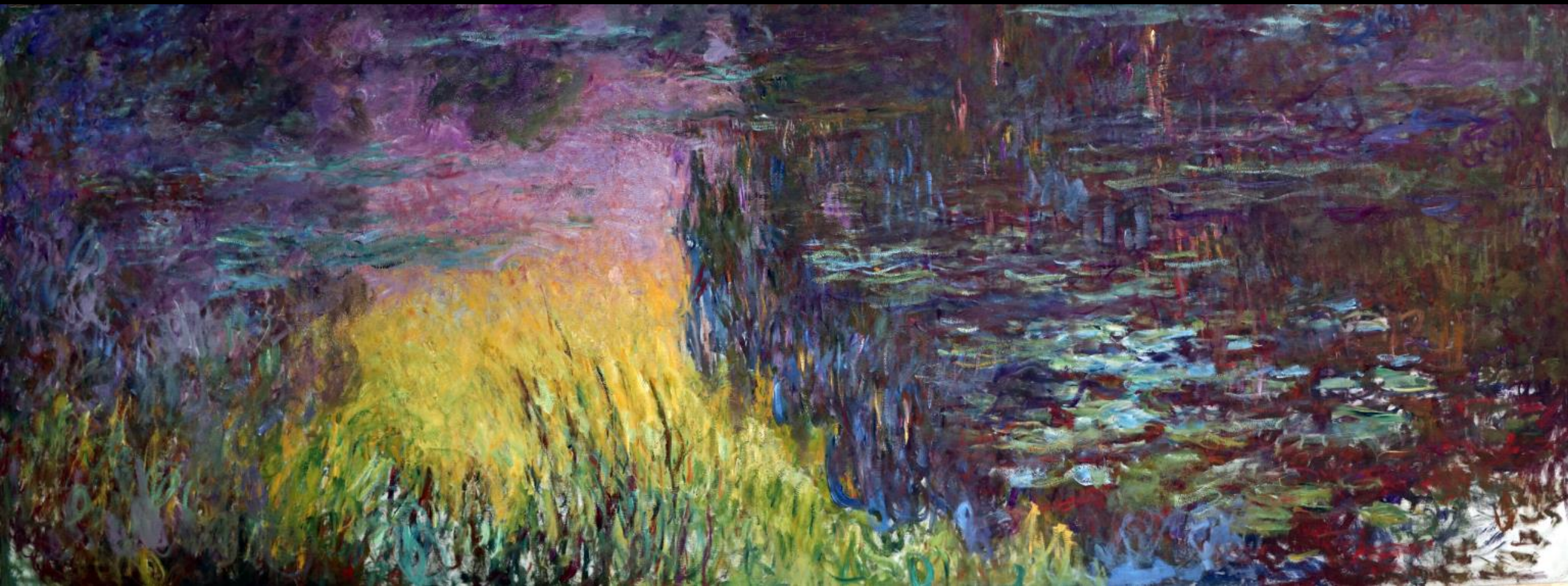


Reflections on
the pond.





Water reflections



Water reflections



Water reflections

