



2003 Fresh Snap Bean Marketing Fact Sheet

PRODUCTION

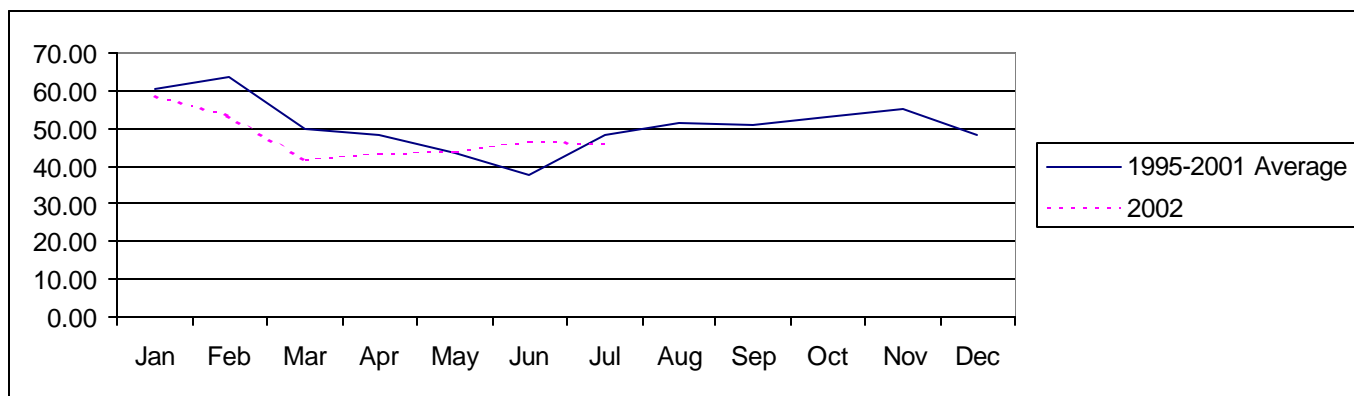
- Kentucky producers indicated that beans were one of the vegetable crops increasing in acreage in 2002
- Per capita use of fresh snap beans held steady at 2.1 pounds in 2002—the highest since 1964
- According to the USDA's Economic Research Service, fresh market production accounts for about 25 percent of the 2.1 billion pounds of snap beans produced, but makes up 2/3 of all farm cash receipts for snap beans
- Farm fresh snap bean sales at Kentucky's farmers' markets account for most of Kentucky's commercial acreage

U.S. Fresh Market Snap Bean Production

	1996	1997	1998	1999	2000	2001	2002*
Acres Harvested	82,860	82,660	87,800	90,600	93,100	94,200	94,400
Yield Per Acre (cwt)	48	46	56	62	63	64	64
Production (1,000 cwt)	3,964	3,805	4,883	5,607	5,894	6,018	6,000
Value per Cwt	\$ 42.02	\$ 40.58	48.92	46.53	42.65	45.39	44.50
Total Value (1,000 dollars)	166,559	154,414	238,858	260,879	251,399	273,173	267,000

Source: USDA/ERS *UK estimates for 2002 based on NASS data and seasonal trends.

Fresh Snap Bean Average f.o.b Shipping Point Prices (\$ per cwt.)



Source: USDA/ERS

2002 KENTUCKY FRESH MARKET SNAP BEAN BREAKEVEN PRICES

	yield per acre							
bushels per acre	100	150	175	200	225	250	275	300
\$/bu*	\$ 9.08	\$ 6.08	\$ 5.22	\$ 4.57	\$ 4.07	\$ 3.67	\$ 3.34	\$ 3.07

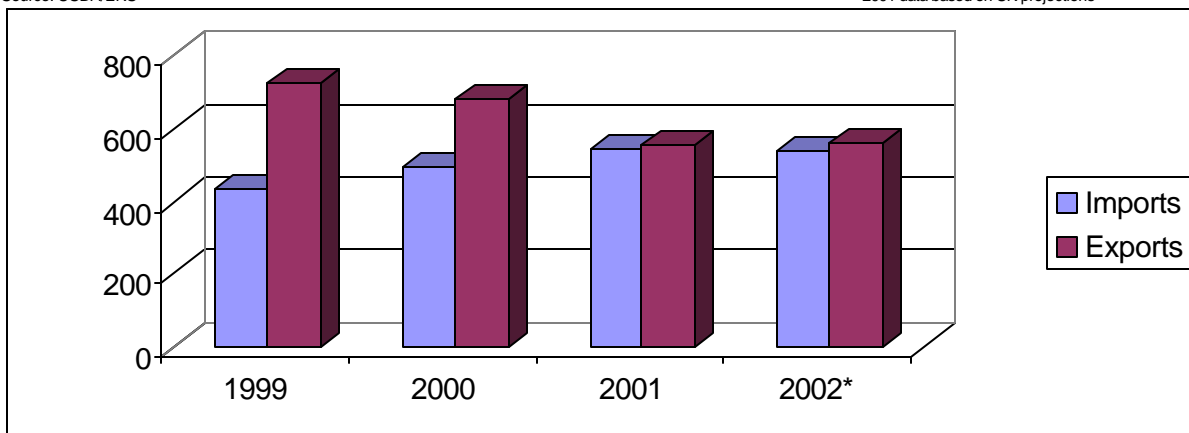
*Price required for \$0 return to land and management

Source: 1998 UK Horticulture Production Budget Updates

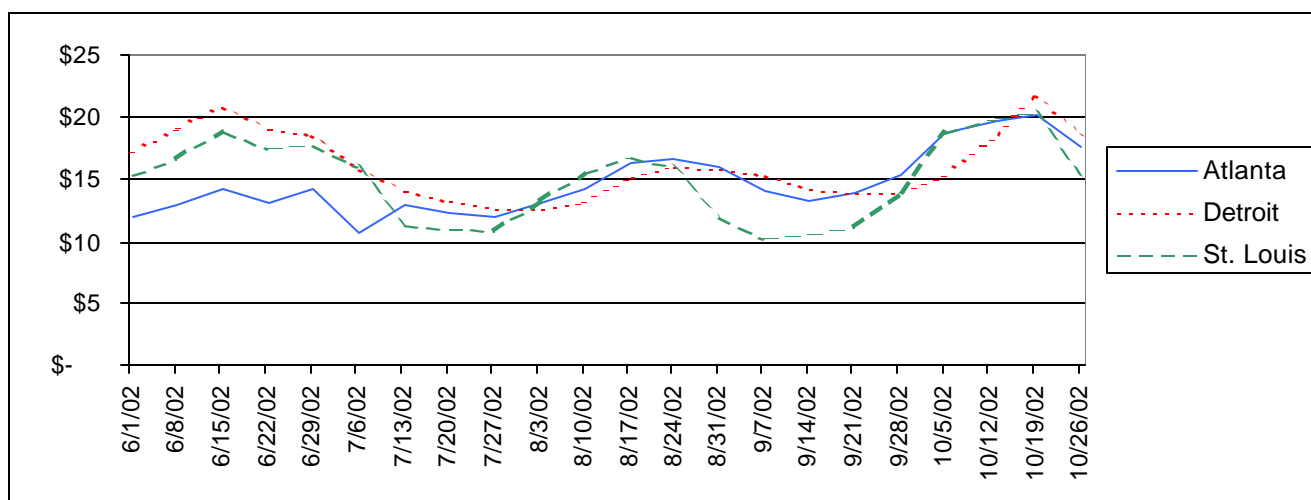
U.S. FRESH SNAP BEAN TRADE (1,000 cwt.)

Source: USDA/ERS

*2001 data based on UK projections



WEEKLY TERMINAL MARKET PRICES (\$ per bushel carton machine picked)



Source: USDA/IFAS Market Information System

Average Arrivals from Producing Areas (1996-1998) (1,000 cwt.)

	Jan	Feb	Mar	Apr	May	Jun	Jul	Aug	Sep	Oct	Nov	Dec
GA, NC, TN					23	76	36	15	14	56	27	1
IL, MI, NJ, NY						4	59	81	76	39		
All Other	106	81	85	132	112	50	63	51	51	61	92	158

Source: USDA. Accounts for 33-50% of production based on data from 22 cities. State-by-state arrivals data not collected since 1999.

Information Sources:

- NASS Vegetable Reports <http://www.usda.gov/nass/>
- USDA Vegetable and Specialties Report <http://usda.mannlib.cornell.edu/reports/erssor/specialty/vgs-bb/>
- UF Marketing Information System <http://marketing.ifas.ufl.edu/market.html>
- UK Horticulture Budgets <http://www.uky.edu/Ag/AgEcon/data/baledhortbudgetinstr495.html>

Prepared by Matt Ernst (memst@uky.edu) and Tim Woods (tawoods@uky.edu), University of Kentucky Department of Agricultural Economics, 400 Charles E. Barnhart Building, Lexington, KY, 40546-0276, Phone 859-257-5762, Fax 859-323-1913, <http://www.uky.edu/Ag/AgEcon>

Educational programs of the Kentucky Cooperative Extension Service serve all people regardless of race, color, age, sex, religion, disability, or national origin.