

# 2003 Cabbage Marketing Fact Sheet



## PRODUCTION

- Fresh cabbage consumption has increased slightly to slightly over 9 pounds per capita from 2000-02.
- Fresh cabbage sales have been spurred by fresh-cut coleslaw and the use of red cabbage in salad mixes. Fresh cut processing will be critical for Kentucky producers seeking added profitability from cabbage.

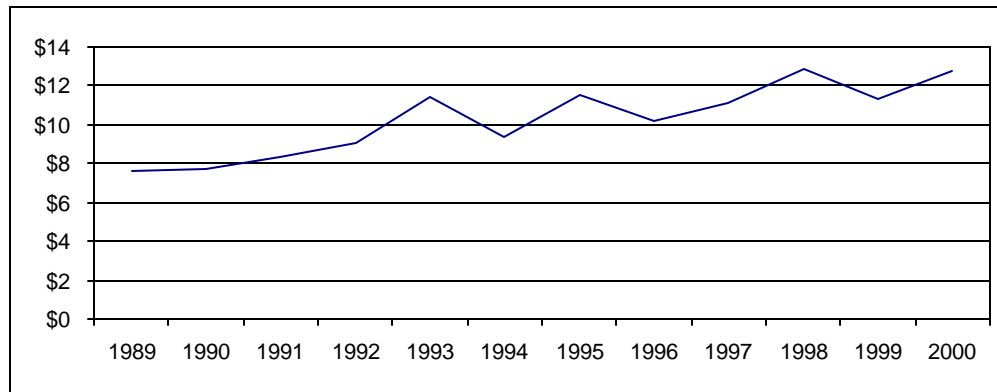
### U.S. Fresh Market Cabbage Production

	1996	1997	1998	1999	2000	2001	2002*
Acres Harvested	71,920	75,230	76,280	74,450	78,490	80,240	80,650
Yield Per Acre (cwt)	318	336	314	293	331	326	326
Production (1,000 cwt)	22,900	25,267	23,946	21,800	25,990	26,193	26,300
Value per Cwt	\$ 10.00	\$ 10.81	\$ 12.68	\$ 11.05	\$ 12.55	\$ 13.93	\$ 12.93
Total Value (1,000 dollars)	228,972	273,032	303,695	240,866	326,198	364,943	340,000

Source: USDA/ERS

\*UK Estimates for 2002 based on NASS production data and annual trends.

### Annual Fresh Cabbage Supply Point Prices (\$ per cwt.)



## 2002 KENTUCKY FRESH MARKET CABBAGE BREAKEVEN PRICES

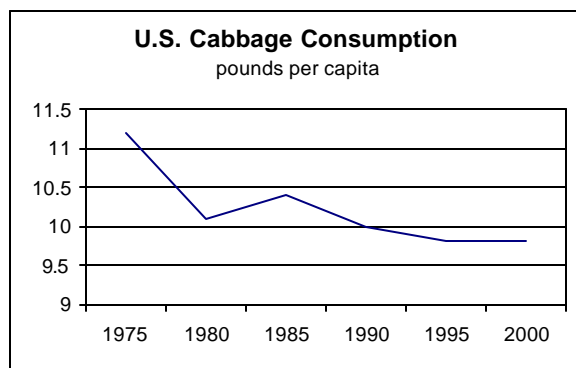
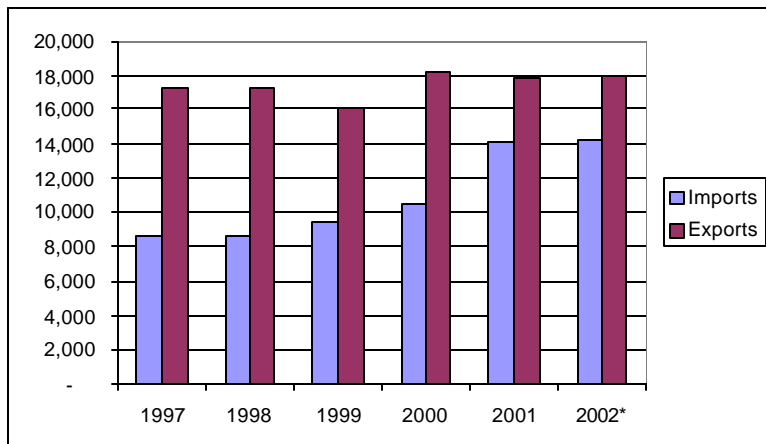
	-----yield per acre-----								
	450	500	550	600	650	750	850	950	1,050
50-Pound Containers per acre									
Breakeven price per 50 lbs.*	\$5.54	\$5.17	\$4.88	\$4.63	\$4.42	\$4.09	\$3.83	\$3.63	\$3.47

\* Price required for \$0 return to land and management

Source: UK Commercial Vegetable Budget Updates

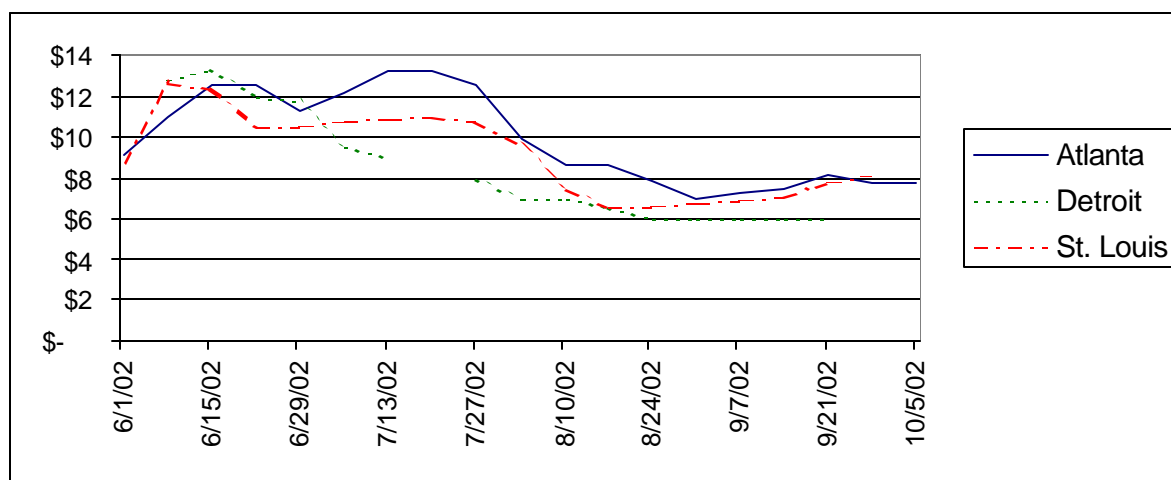
# U.S. FRESH CABBAGE TRADE (\$1,000)

Source: Vegetables and Specialties Situation and Outlook Yearbook \*UK Projections



## WEEKLY TERMINAL MARKET PRICES (50 Pound Cartons)

(50 Pound Cartons)



## Average Arrivals From Producing Areas (1996-1998)

(1,000 cwt.)

	Jan	Feb	Mar	Apr	May	Jun	Jul	Aug	Sep	Oct	Nov	Dec
CA	65	57	80	77	74	74	61	59	59	69	62	78
New York	50	42	44	34	38	27	49	69	82	85	80	78
FL, GA, NC, SC	144	113	146	161	213	114	47	24	12	20	36	166
IL, IN, MI, OH	1					12	64	77	62	54	32	11
TX	87	102	151	109	73	21	5	1		1	14	57
All Others and Imports	42	34	28	13	16	91	191	151	178	185	135	93

Source: USDA. Accounts for 33-50% of production based on data from 22 cities. State-by-state arrivals data not collected since 1999.

### Information Sources:

NASS Vegetable Reports

<http://www.usda.gov/nass/>

USDA Vegetable/Specialties Report

<http://usda.mannlib.cornell.edu/reports/erssor/specialty/vgs-bb/>

UF Marketing Information System

<http://marketing.ifas.ufl.edu/market.html>

UK Horticulture Budgets

<http://www.uky.edu/Ag/AgEcon/data/baledhortbudgetinstr495.html>

Prepared by Matt Ernst ([mernst@uky.edu](mailto:mernst@uky.edu)) and Tim Woods ([tawoods@uky.edu](mailto:tawoods@uky.edu)), University of Kentucky Department of Agricultural Economics, 400 Charles E. Barnhart Building, Lexington, KY, 40546-0276, Phone 859-257-5762, Fax 859-323-1913, <http://www.uky.edu/Ag/AgEcon>

Educational programs of the Kentucky Cooperative Extension Service serve all people regardless of race, color, age, sex, religion, disability, or national origin.