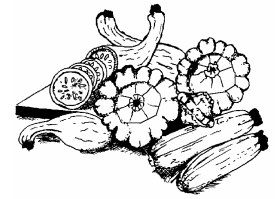





## 2003 Summer Squash Marketing Fact Sheet



### *Squash Production Trends*

-  Zucchini, yellow crookneck, and yellow straightneck squash make up the bulk of fresh summer squash shipments in the United States
-  Southern areas favor yellow crookneck squash consumption, while northern areas tend to favor yellow straightneck squash
-  Fresh market squash shipments rebounded by 59% in July 2002 from very low (due to drought conditions) July 2001 levels

### *Selected Squash Shipments By State 2000-2001*

1,000 cwt.

State	2000	2001
California	1494	1634
Florida	1344	1392
Georgia	2310	988
Michigan	610	1100
North Carolina	400	390
New Jersey	488	466
New York	726	624
Ohio	366	204
Oregon	653	503
South Carolina	99	154
Tennessee	104	51
Texas	218	235

Source: USDA/NASS

### 2002 Kentucky Yellow Crookneck Squash Breakeven Prices

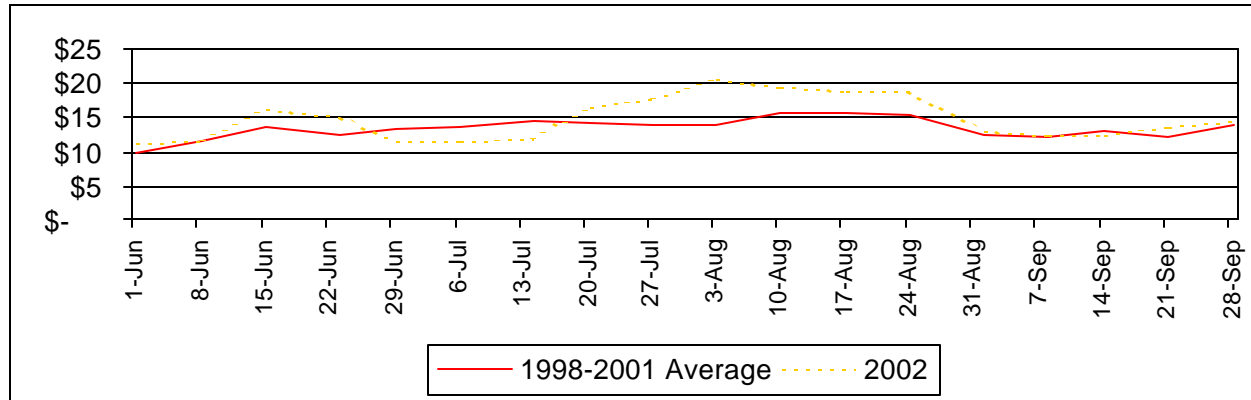
5/9 Bu. Boxes	-----yield per acre-----							
	700	800	900	950	1000	1,050	1,100	1,200
Price*	\$6.08	\$5.74	\$5.48	\$5.36	\$5.26	\$5.17	\$5.09	\$4.94

\* Price required for \$0 return to land, capital, and management in 2002 KY Commercial Vegetable Updates

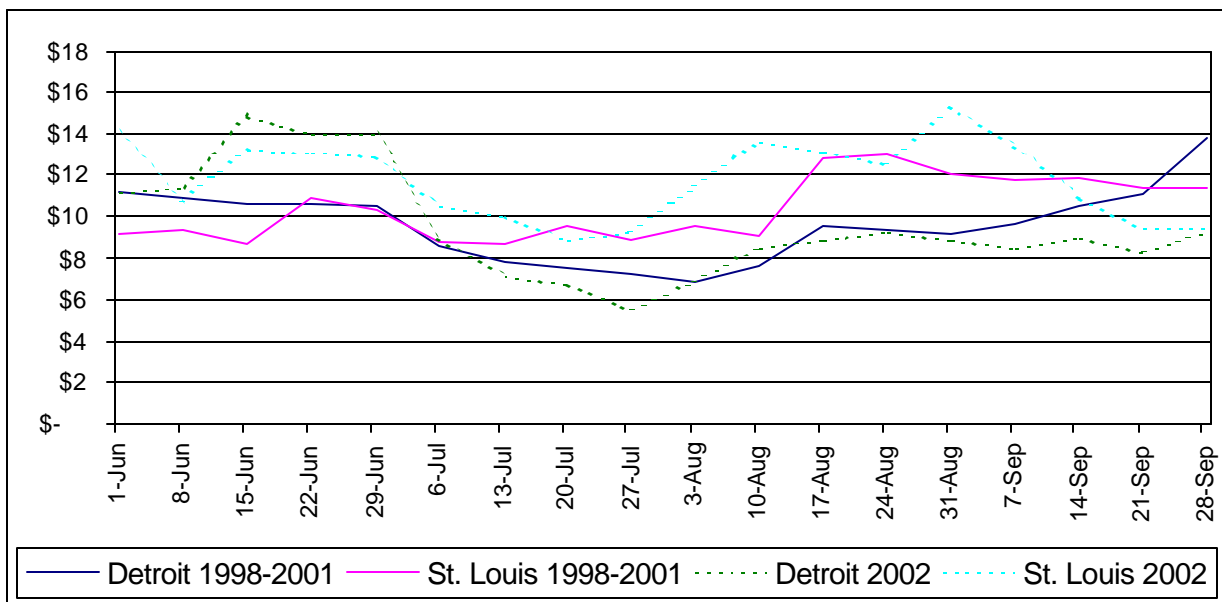
# TERMINAL MARKET PRICES

SOURCE: MARKET INFORMATION SYSTEM

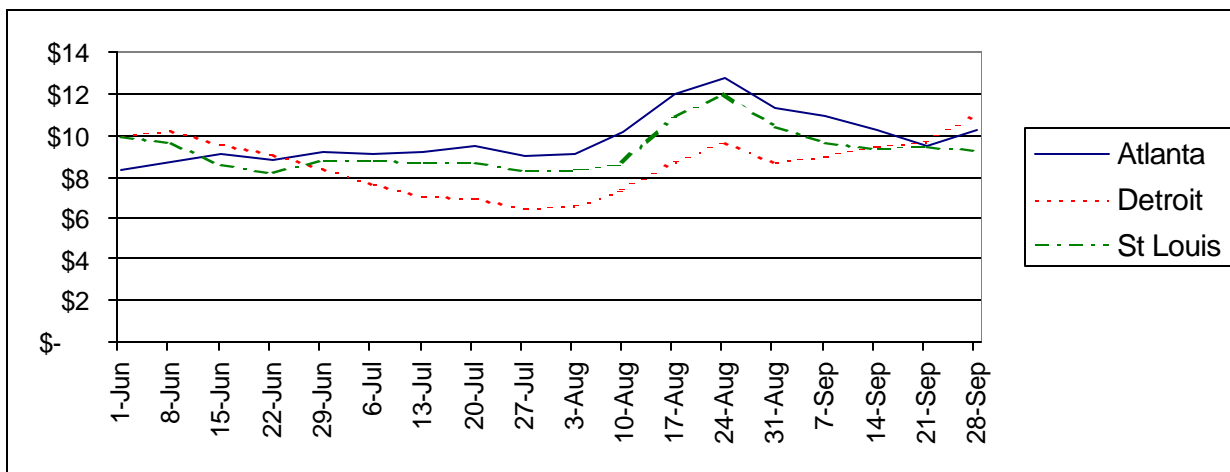
## 1/2 & 5/9 bu. Yellow Crookneck Squash, Atlanta Terminal



## 1/2 & 5/9 bu. Yellow Straightneck Squash, Detroit and St. Louis Terminals



## 1/2 & 5/9 bu. Zucchini Squash, Detroit and St. Louis Terminals, 1999-2002 Averages



Prepared by Matt Ernst ([mernst@uky.edu](mailto:mernst@uky.edu)) and Tim Woods ([tawoods@uky.edu](mailto:tawoods@uky.edu)), University of Kentucky Department of Agricultural Economics, 400 Charles E. Barnhart Building, Lexington, KY, 40546-0276, Phone 859-257-5762, Fax 859-323-1913, <http://www.uky.edu/Ag/AgEcon>

Educational programs of the Kentucky Cooperative Extension Service serve all people regardless of race. color. age. sex. religion. disability. or national origin.