

# 2003 Sweet Corn Marketing Fact Sheet



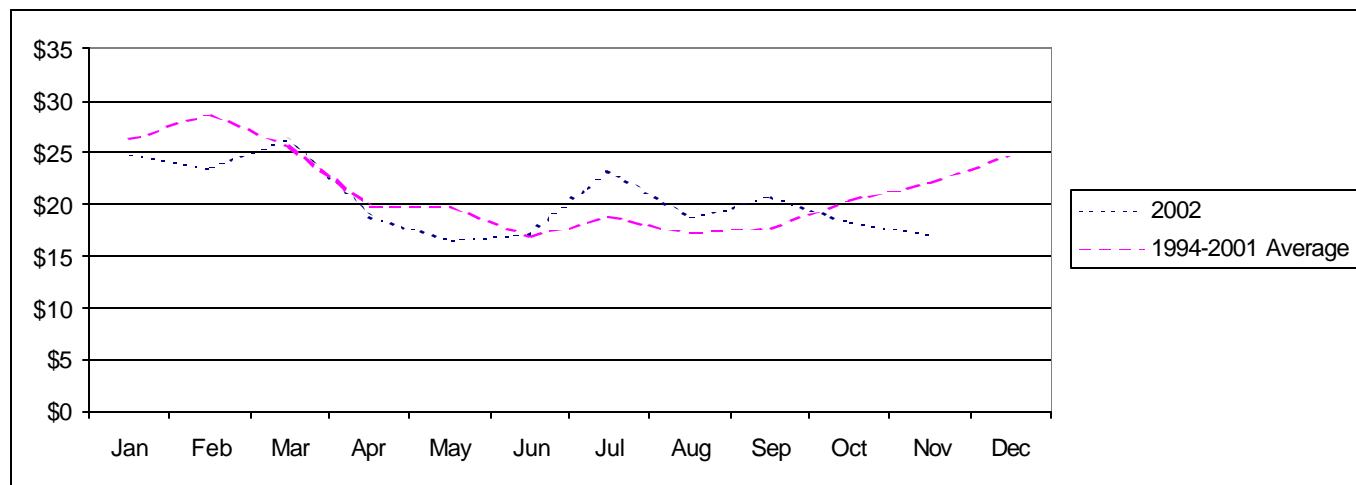
## FRESH SWEET CORN PRODUCTION

- Sweet corn acreage was down about 2% in 2002 with stronger prices in July and August contributing to significantly greater producer profitability than in 2001
- Value-added and premium local marketing will be key to maintaining future sweet corn profitability

	1997	1998	1999	2000	2001	2002*
Acres Harvested	236,400	237,400	237,300	246,100	255,900	252,000
Yield Per Acre (cwt)	100	111	109	107	108	108
Total Production (1000 cwt)	23,641	26,311	25,786	26,401	27,661	27,200
Average Price	\$ 17.71	\$ 17.19	\$ 17.19	\$18.21	\$19.62	\$20.00
Total Value (\$1,000)	418,617	452,410	443,276	480,706	542,578	544,100

Source: USDA/ERS \*UK estimates for 2002 based on ERS/NASS projections

## Fresh Sweet Corn f.o.b. Shipping Point Price (\$ per cwt.)



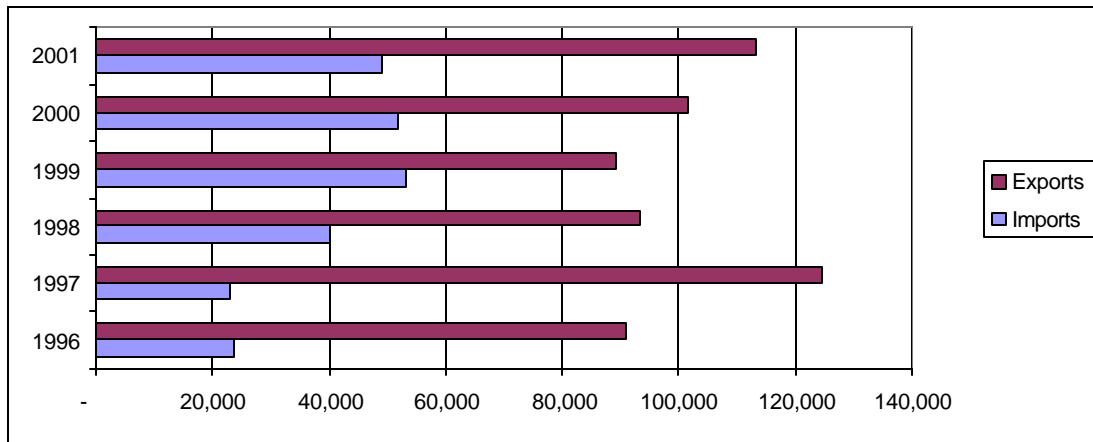
# 2002 KY FRESH MARKET SWEET CORN BREAKEVEN PRICES

Crates per Acre	-----yield per acre-----							
	300	310	320	330	340	345	350	355
\$/Crate*	\$ 5.09	\$ 5.03	\$ 4.97	\$ 4.92	\$ 4.87	\$ 4.85	\$ 4.83	\$ 4.80

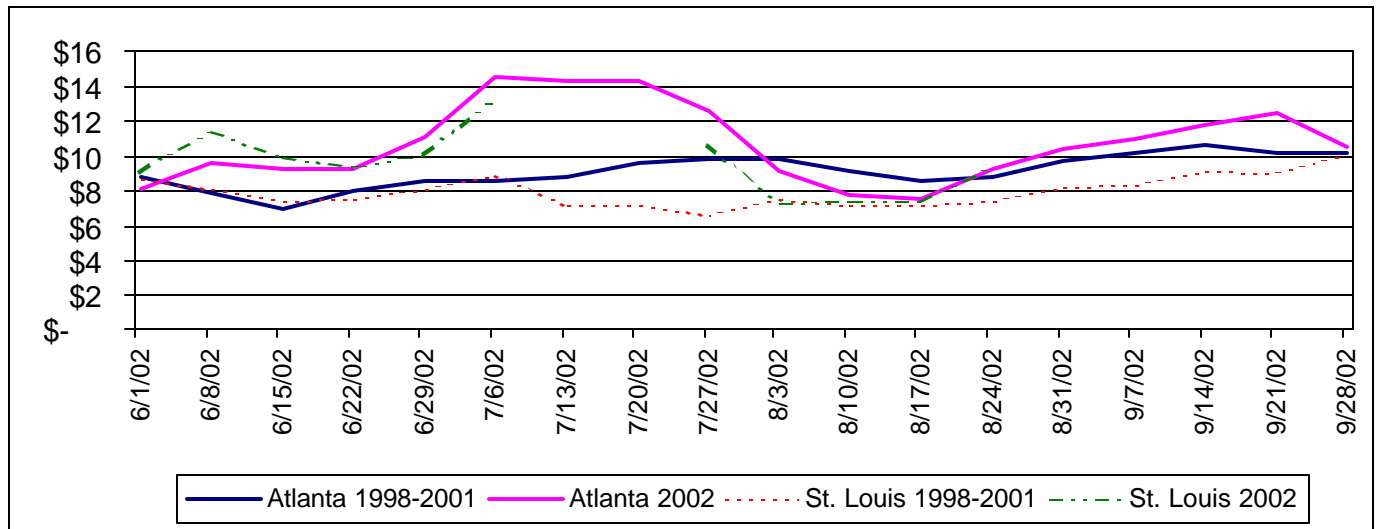
\*Price yielding \$0 return above variable costs

Source: UK Commercial Vegetable Budget Updates

## U.S. FRESH SWEET CORN TRADE (1,000 cwt)



## WEEKLY TERMINAL MARKET PRICES (Crates of 4 dozen minimum)



Source: USDA and IFAS Market Information System

**1997 Arrivals From Producing Areas** (1,000 cwt.)

	Jan	Feb	Mar	Apr	May	Jun	Jul	Aug	Sep	Oct	Nov	Dec
CA				11	150	208	228	186	144	127	68	23
Florida	80	67	82	207	398	254	62			45	84	134
GA and NC					4	188	245	9	7	64	15	
Other States and Imports	44	26	33	32	3	18	166	334	251	48	15	47

Accounts for 33-50% of production based on data from 22 cities. Source: USDA

**Information Sources:**

NASS Vegetable Reports

<http://www.usda.gov/nass/>

USDA Vegetable and Specialties Report  
Marketing Information System

<http://usda.mannlib.cornell.edu/reports/erssor/specialty/vgs-bb/>

<http://marketing.ifas.ufl.edu/market.html>

UK Horticulture Budgets

<http://www.uky.edu/Ag/AgEcon/data/baledhortbudgetinstr495.html>

Prepared by Matt Ernst ([mernst@uky.edu](mailto:mernst@uky.edu)) and Tim Woods ([tawoods@uky.edu](mailto:tawoods@uky.edu)), University of Kentucky Department of Agricultural Economics, 400 Charles E. Barnhart Building, Lexington, KY, 40546-0276, Phone 859-257-5762, Fax 859-323-1913, <http://www.uky.edu/Ag/AgEcon>

*Educational programs of the Kentucky Cooperative Extension Service serve all people regardless of race, color, age, sex, religion, disability, or national origin.*