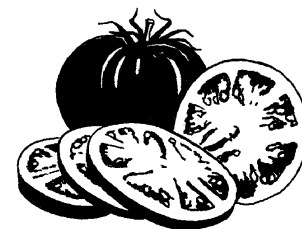


2003 Fresh Market Tomato Fact Sheet



PRODUCTION

- Tomatoes remain one of the most profitable and popular crop alternatives in KY
- U.S. field-grown tomatoes face increased competition from both domestic and import hothouse varieties
- Fresh tomato shipments were up sharply in the summer of 2002, by nearly 30%

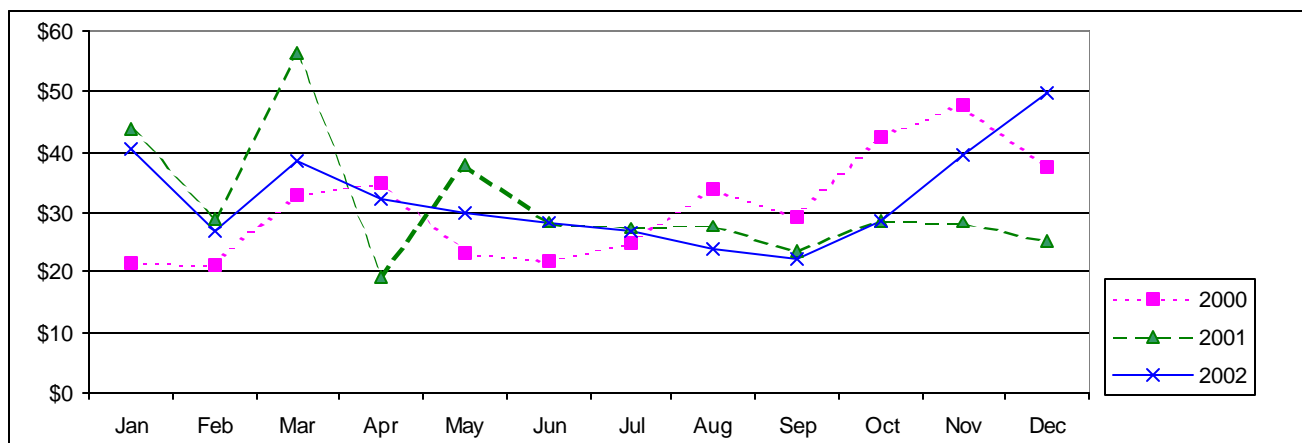
U.S. Fresh Market Tomato Production Data (USDA/ERS)

	1996	1997	1998	1999	2000	2001	2002*
Area Harvested	120,640	115,190	121,710	132,880	123,170	127,870	129,000
Yield Per Acre (cwt)	279	285	268	276	306	289	295
Production (1,000 cwt)	33,634	32,777	32,628	36,735	37,665	36,962	38,000
Value per Cwt	\$28.16	\$31.74	\$35.24	\$25.89	\$30.79	\$30.22	\$29.34
Total Value (\$1,000)	\$947,031	\$1,040,382	\$1,149,713	\$951,046	\$1,159,590	\$1,116,982	\$1,115,000

Source: USDA/ERS

*UK estimates for 2002 based on ERS/NASS projections

U.S. Fresh Market Tomatoes F.o.b. Shipping Point Prices, Jan. 2000-Dec. 2002 (\$/cwt)



Source: USDA/ERS



Fresh tomato shipping-point prices continued their increase in 2001 after a 9-year low in 1999



About 650 acres of tomatoes were grown in Kentucky in 2001, with a 4% increase anticipated for 2002; there is interest in starting/expanding greenhouse tomato production in Kentucky during the 2003 season

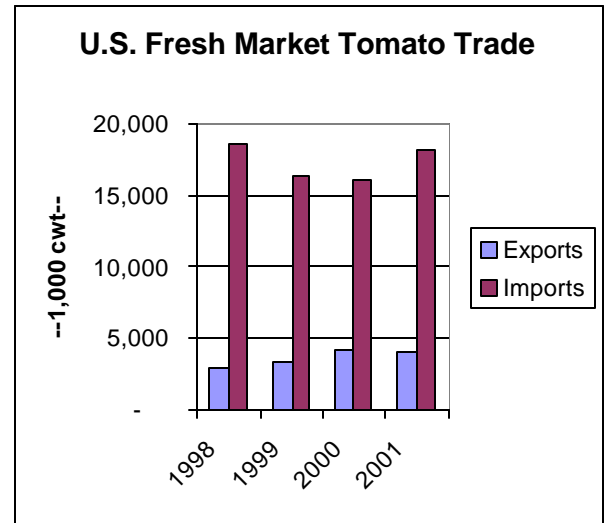


Kentucky's vegetable co-ops harvested nearly 300 acres of tomatoes in 2002 while producers continue to explore staked tomato production as a replacement for lost tobacco income

TRADE DATA

- Mexico is the largest international source for fresh market tomatoes to the U.S.
- Tomato imports increased 87% during 2001
- A Census Bureau HS import code for greenhouse tomatoes was added in July 2000

Source: USDA/ERS

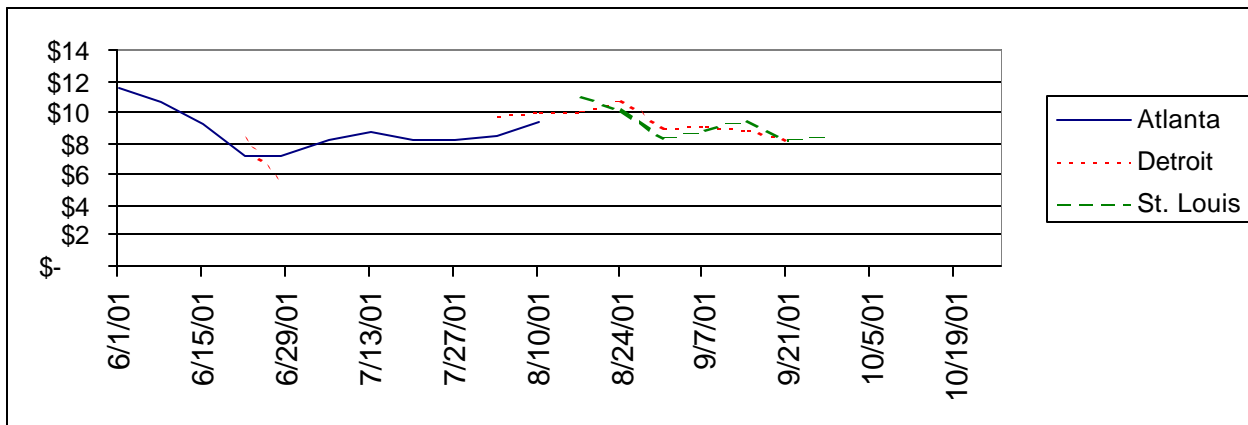


2002 KY FRESH MARKET TOMATO BREAKEVEN PRICES

	-----yield per acre-----							
25# boxes per acre	1,450	1,500	1,550	1,600	1,650	1,700	1,750	1,800
\$/box*	\$ 6.79	\$ 6.69	\$ 6.60	\$ 6.52	\$ 6.44	\$ 6.36	\$ 6.29	\$ 6.23

*Source: UK Department of Agricultural Economics. Price required for \$0 to land, capital and management.

SAMPLE WEEKLY TERMINAL MARKET PRICES (2001) (\$/25 lb box)



Source: USDA/IFAS Mktng. Info. System

Information Sources:

NASS Vegetable Reports

<http://www.usda.gov/nass/>

USDA Vegetable and Specialties Report

<http://usda.mannlib.cornell.edu/reports/erssor/specialty/vgs-bb/>

Marketing Information System

<http://marketing.ifas.ufl.edu/market.html>

UK Horticulture Budgets

<http://www.uky.edu/Ag/AgEcon/data/baledhortbudgetinstr495.html>

Prepared by Matt Ernst (mernst@uky.edu) and Tim Woods (tawoods@uky.edu), University of Kentucky Department of Agricultural Economics, 400 Charles E. Barnhart Building, Lexington, KY, 40546-0276, Phone 859-257-5762, Fax 859-323-1913, <http://www.uky.edu/Ag/AgEcon>

Educational programs of the Kentucky Cooperative Extension Service serve all people regardless of race, color, age, sex, religion, disability, or national origin.