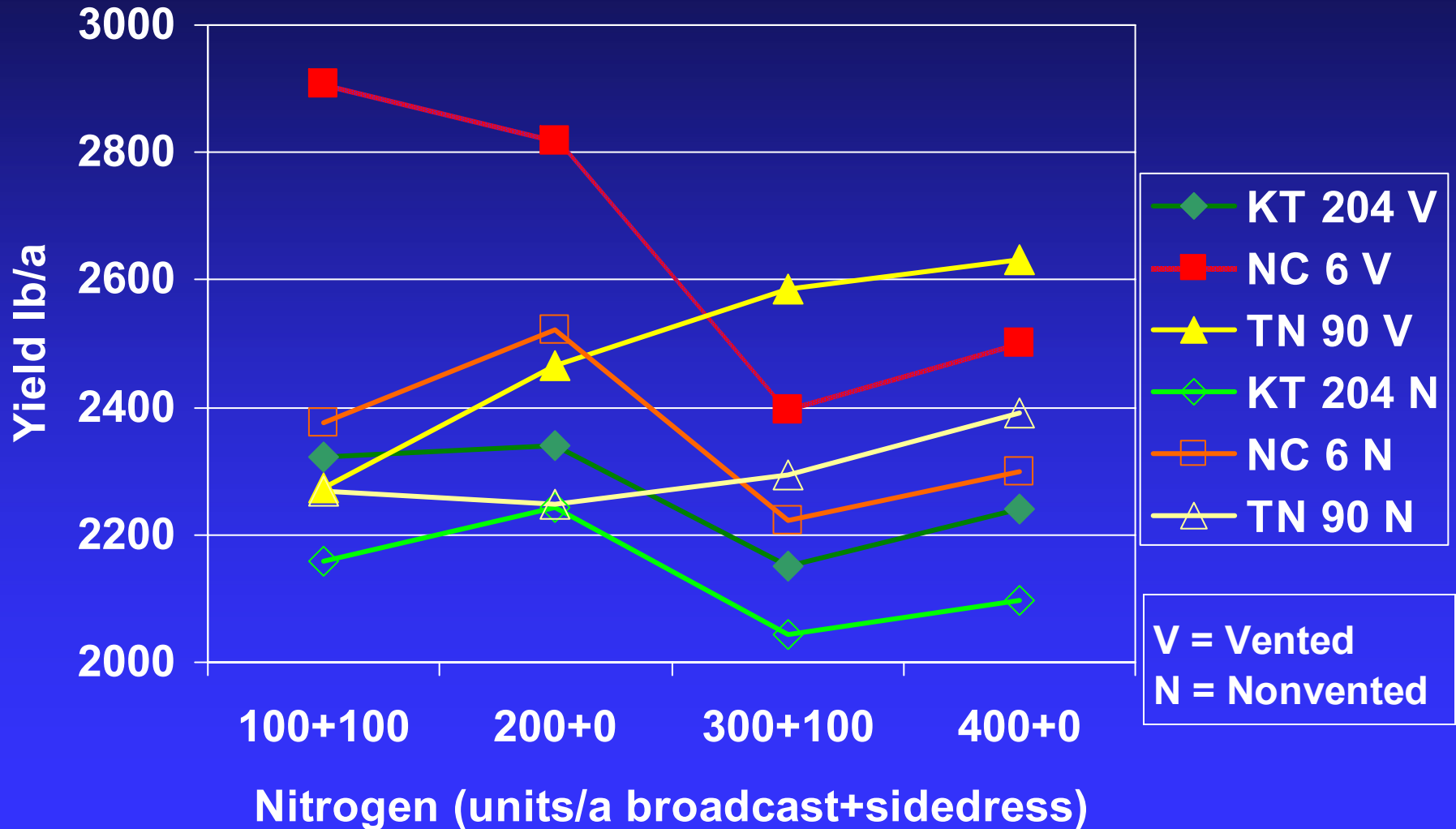


Variety Trials

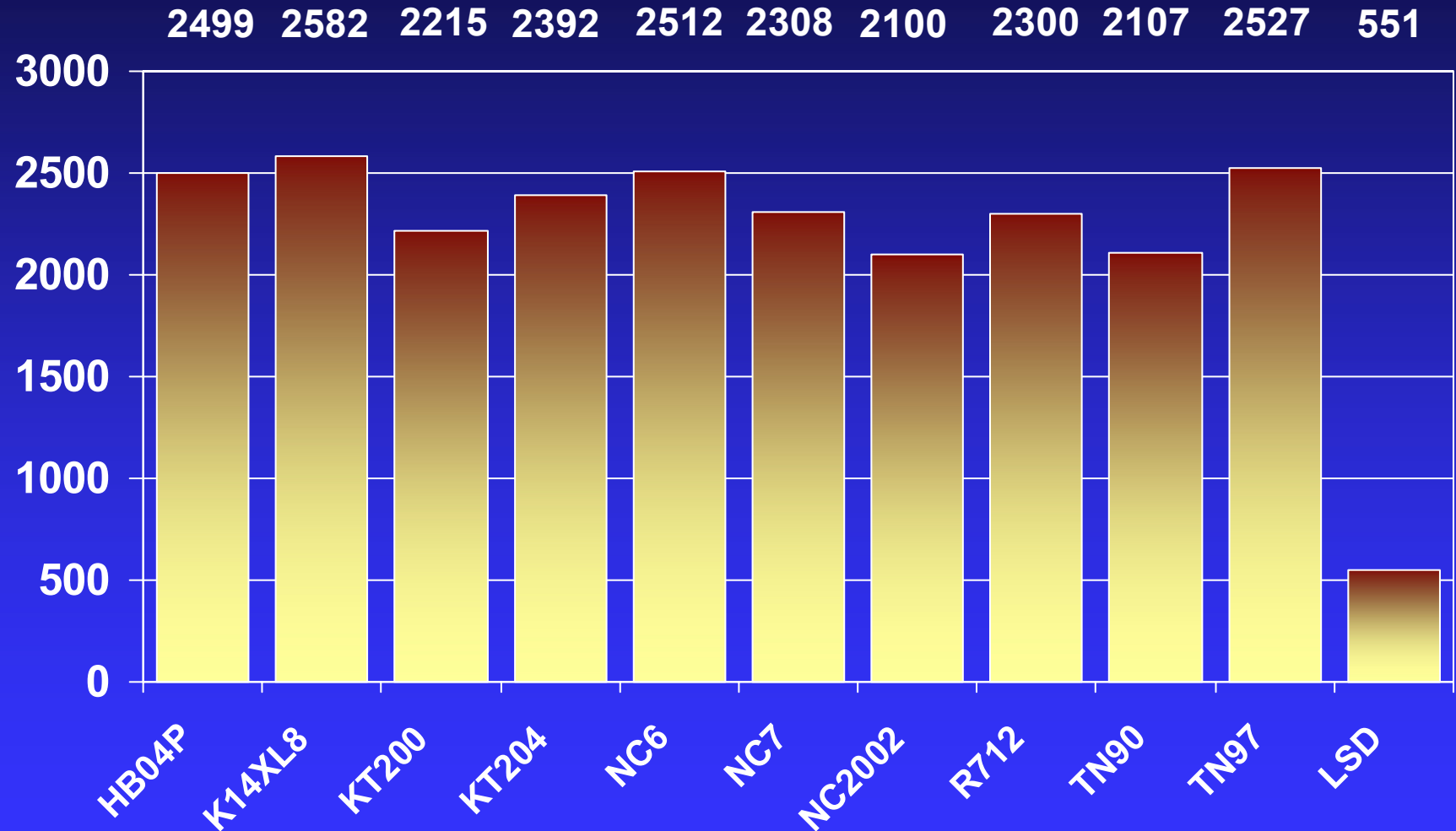
The 2005 variety testing season started dryer than in previous year. However, with the exception of rainfall from a few hurricanes, the weather was dry through out the season. KT 204 faired very well under these conditions, but it may not be as drought tolerant as some varieties. Low drought tolerance may reduce black shank tolerance. However, when assessing what variety could have controlled black shank better than KT 204 under the same conditions, no other variety comes to mind.

Yield of Burley Tobacco Varieties with Different Fertility – UK Woodford Co. Farm



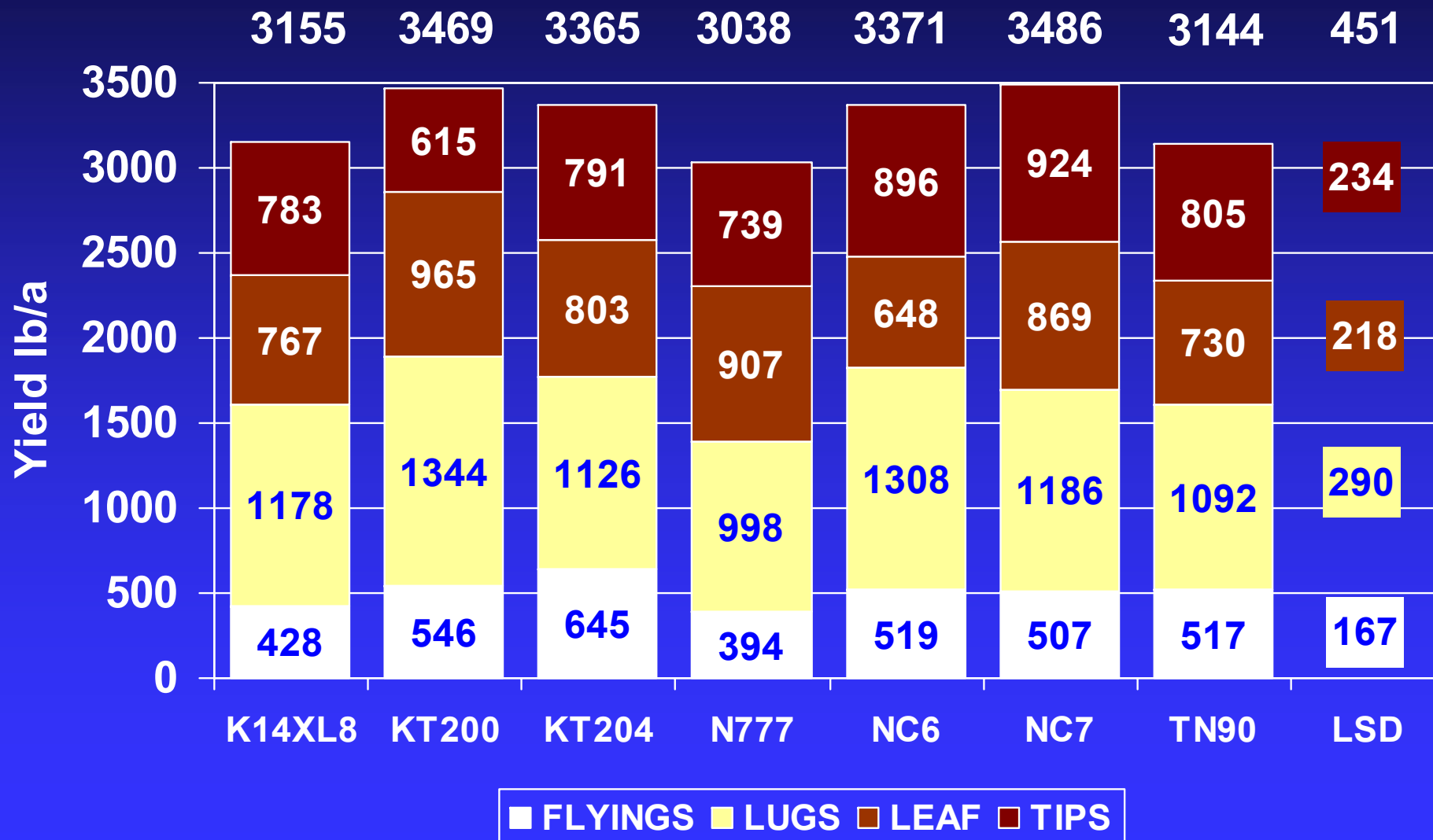
Nitrogen was applied in the ammonium nitrate form .

Burley Tobacco Variety Trial Allen Co. – Al Pedigo Farm

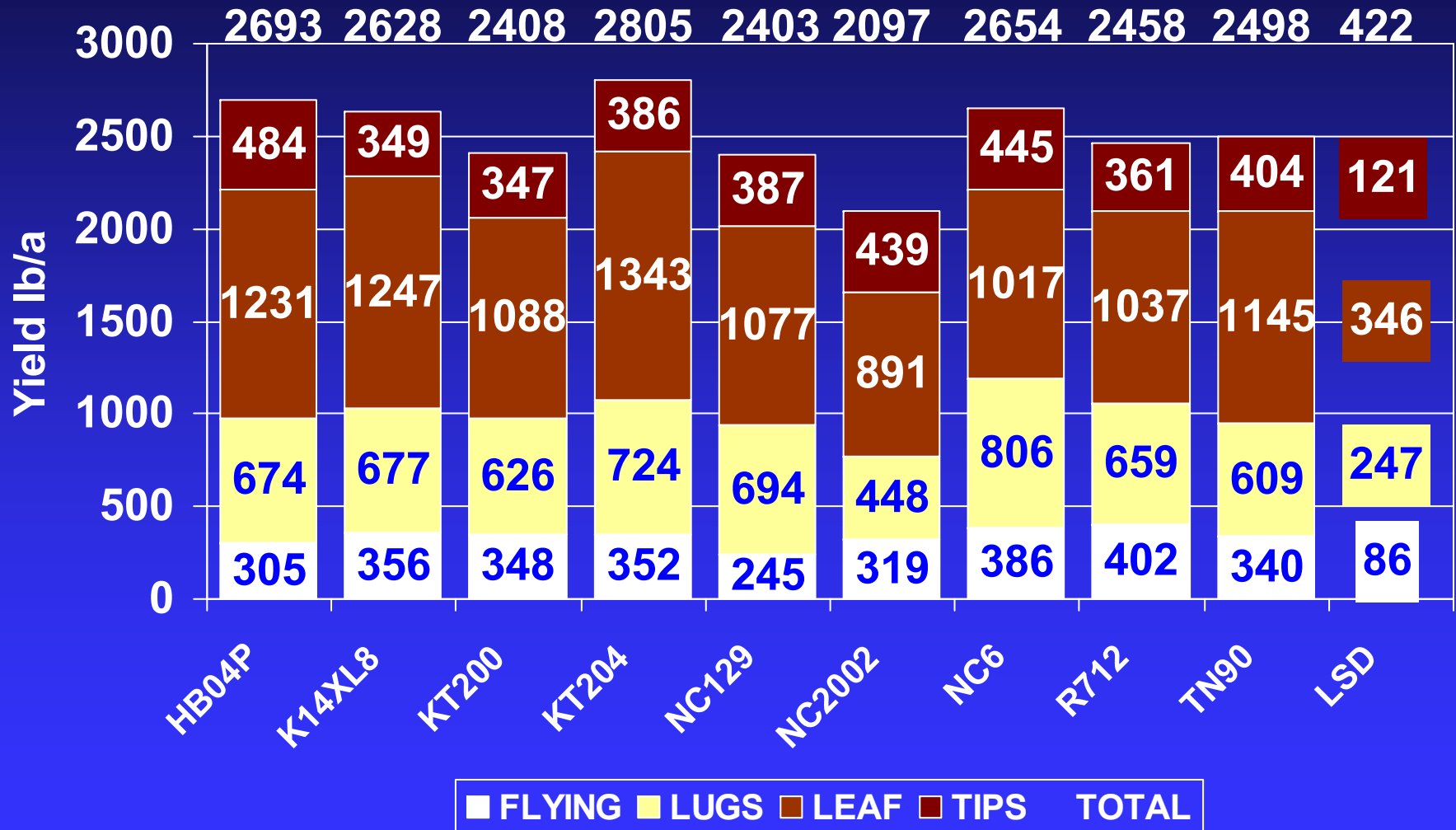


Burley Tobacco Variety Trial

Woodford Co. – Rusty Thompson Farm

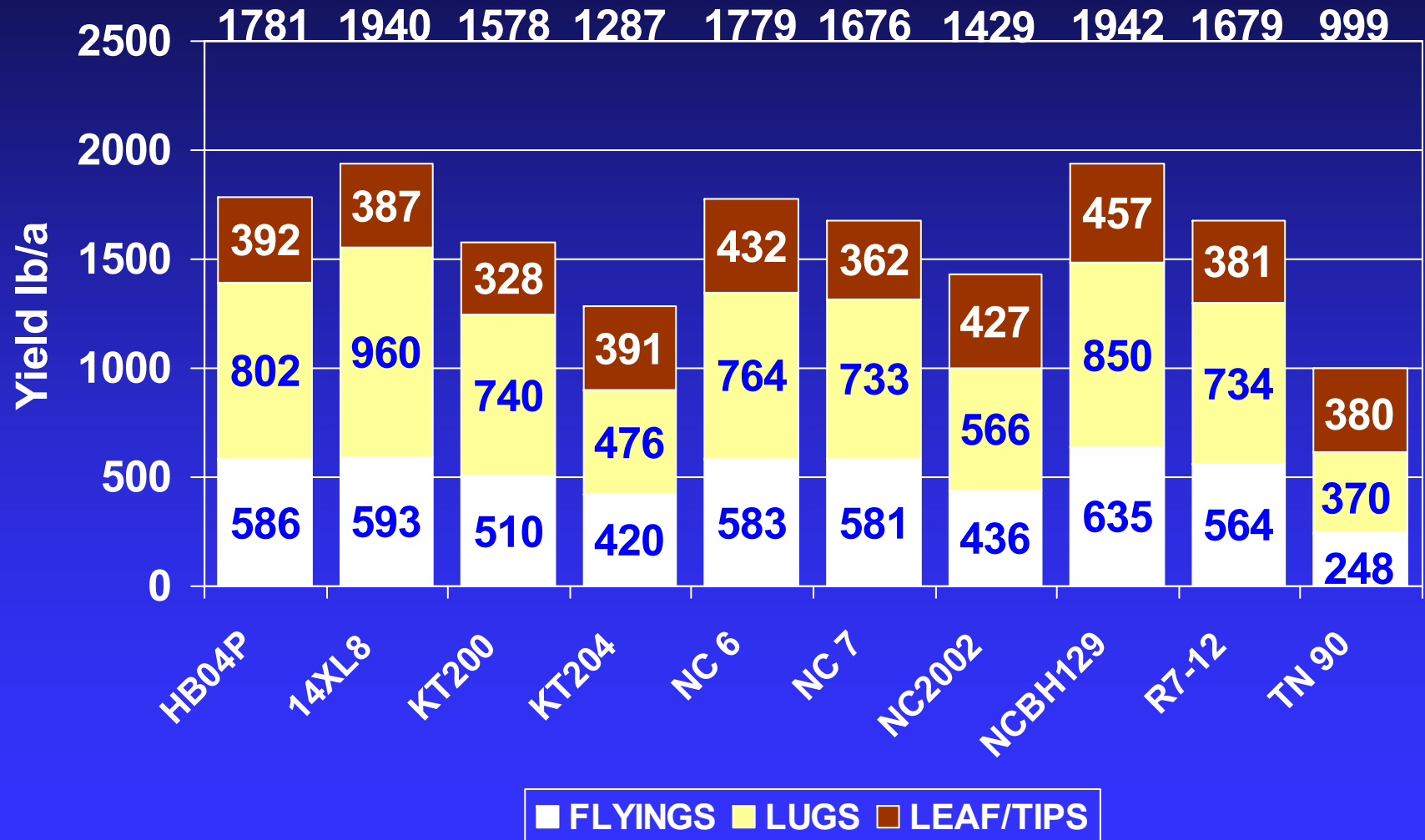


Burley Tobacco Variety Trial Taylor Co. - Doug Cox Farm



Burley Tobacco Variety Trial

Garrard Co. – Maurice Middleton Farm



Burley Variety Comparison

UKREC, Princeton, KY - 2005

- TN 90 and N7371 set on May 25 (4900 pl/A)
- Standard fertility and production practices
- Both varieties received 1 fatty alcohol application down the stalk at topping.
- MH at 2 gal/A broadcast as coarse spray 1 wk after topping (50 gal/A).
- 3 replications of data used for each variety.

Burley Variety Comparison

UKREC, Princeton, KY – 2005

*Grade Index and Revenue based on 2004 federal grade and price support for Type 31 burley tobacco.

Variety	Total Yield (lbs/A)	Grade Index*	Revenue/A*
N 7371	1691	52.9	3132
TN 90	1952	59.2	3760
LSD _{0.05}	902	6.5	1991