

Agrimate: covering material to reduce spiral root in tobacco float systems

Bob Pearce and Gary Palmer
Extension Tobacco Specialists
University of Kentucky

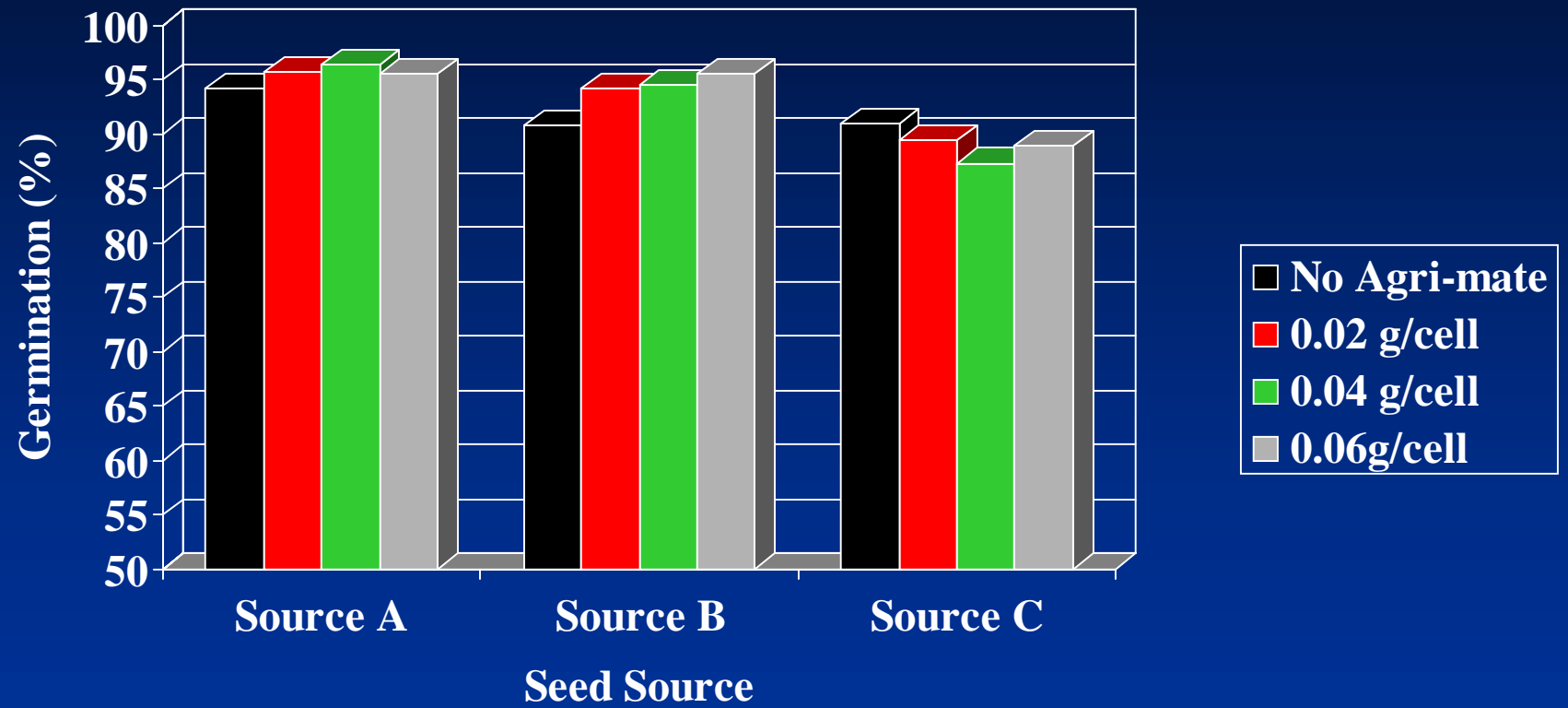
Spiral Root



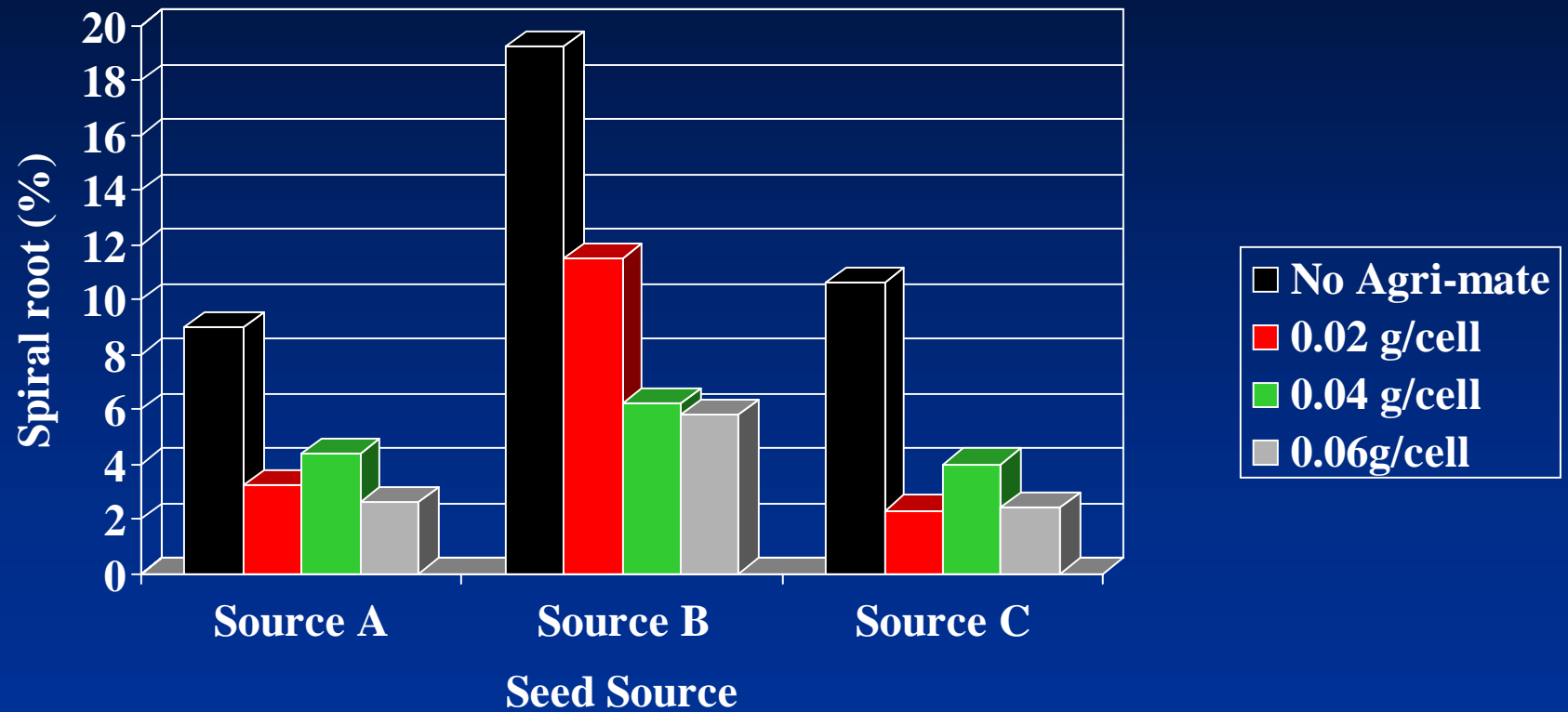
Factors that Influence Spiral Root

- Media
 - Varies by brand
 - Unpredictable from year to year
- Pellet
 - Unpredictable
- Weather
 - Inconsistent
 - Moderately predictable

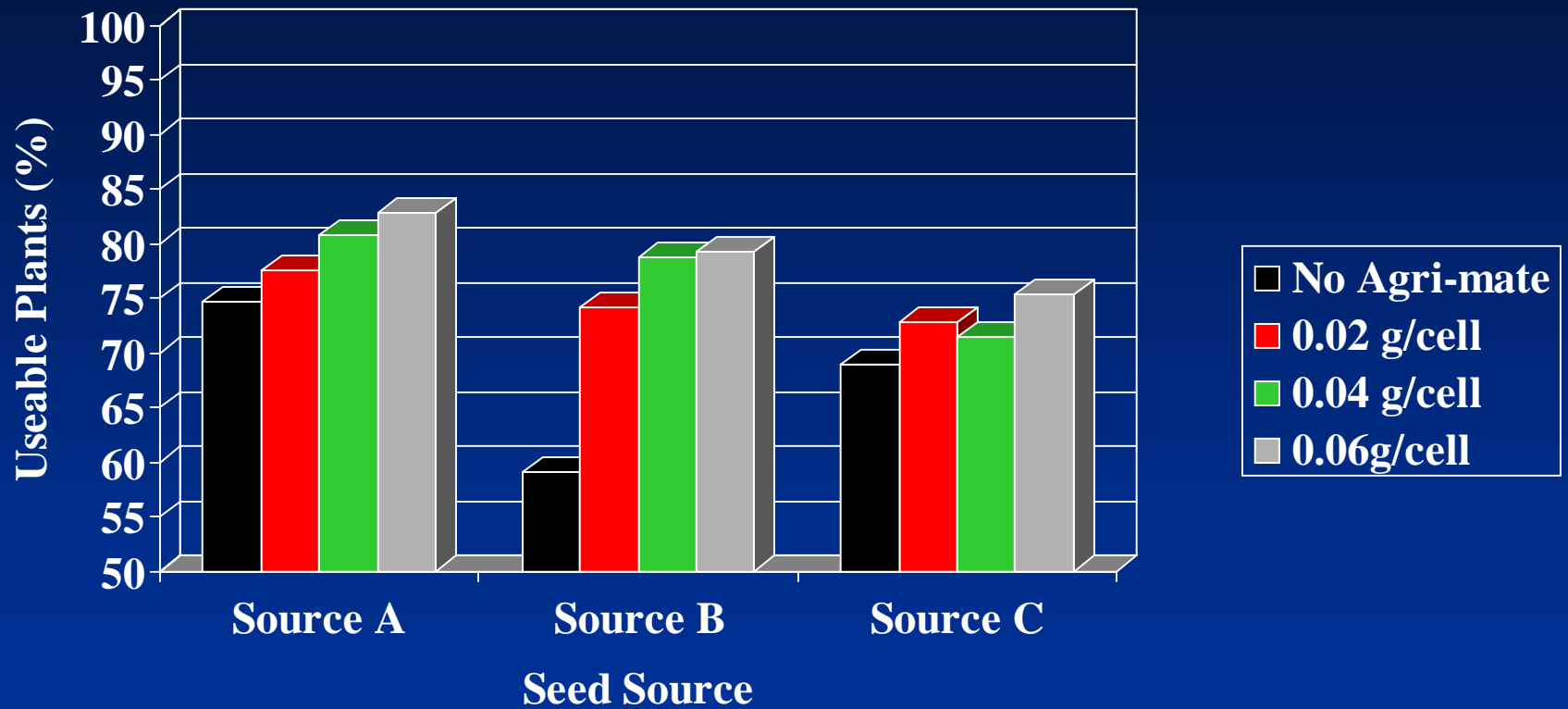
Effect of Agri-mate on germination



Effect of Agri-mate on spiral root



Effect of Agri-mate on useable plants



Agri-mate rates

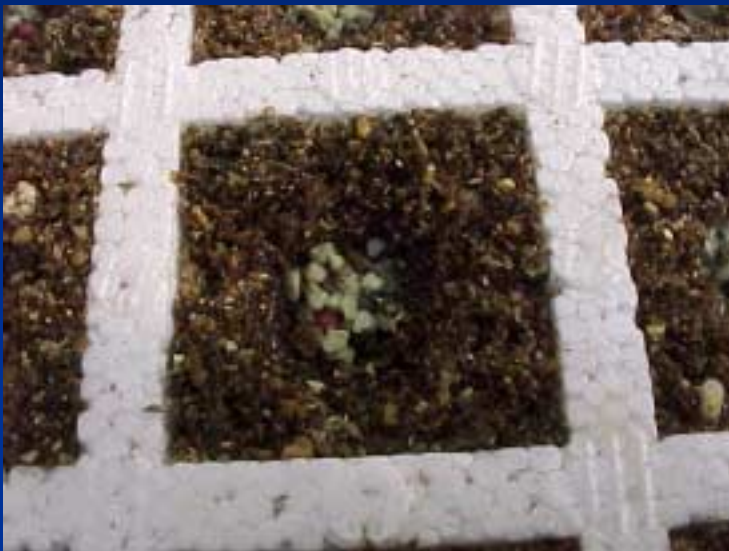
0g/cell



0.02 g



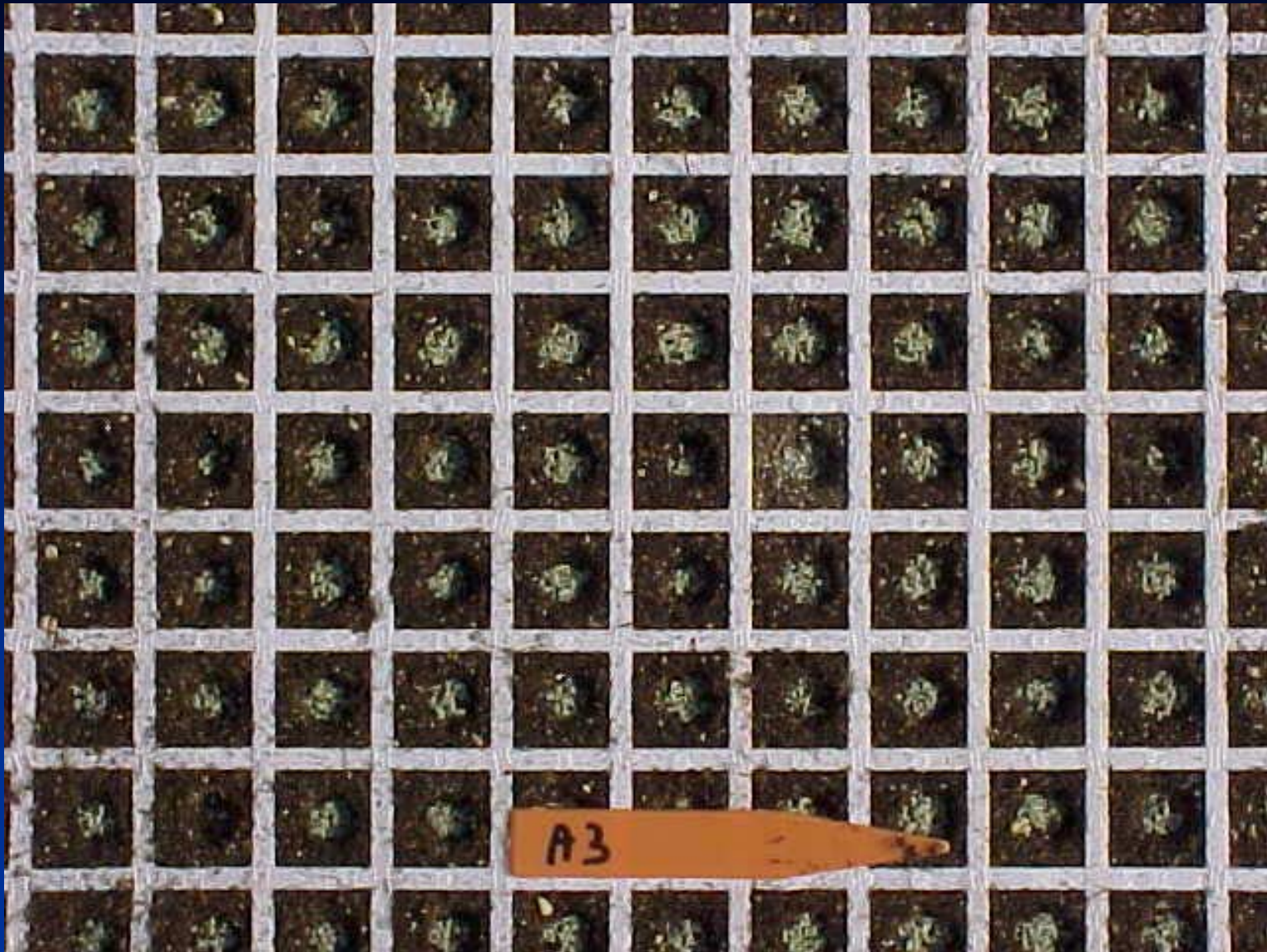
0.04g



0.06g



Proper distribution of Agrimate



Summary

- Must be applied lightly
 - Heavy application may reduce germination
- Must be applied uniformly
 - Uneven application
 - May reduce stands
 - Uneven stands and growth
 - Variable reduction in spiral roots
- Recommended only where a history of spiral root problems exists