

Tucked away in the most breathtaking corners of the majestic Canadian Rockies are the legendary resorts of Lake Louise, Jasper, and Banff.

Head north to experience the humbling proportions and famed beauty of Canada’s mountain landscapes as you revel in the opulence, history, and hospitality of its most celebrated lodges.



Your Expedition Leader:
From identifying a wildflower to describing the formation of the Columbia Icefield, the company and keen eyes of an expert Orbridge Expedition Leader will make all the difference. Enriched by their expertise, you’ll bring home a deeper understanding of the flora, fauna, cultural history, and natural characteristics of the Canadian Rockies—to go with your beautiful photographs, of course.



Optional Extension
Banff to Vancouver by Rail
See the sights from glass-domed seating aboard the *Rocky Mountaineer* as you traverse the Continental Divide along Kicking Horse River, Shuswap Lake, and Fraser Canyon, ending in the sparkling city of Vancouver.

Your 7-Day Itinerary*

- Day 1:** Arrive in Calgary (R)
Welcome reception
Overnight: Westin Calgary
- Day 2:** Calgary / Lake Louise (B,D)
Guided tour of Calgary, Moraine Lake, afternoon at leisure—perhaps take a canoe excursion, walk along the lake, or relax with travel companions at the hotel
Overnight: Fairmont Chateau Lake Louise
- Day 3:** Lake Louise / Icefields Parkway / Jasper (B,D)
Scenic drive, Peyto Lake, Ice Explorer ride, Jasper National Park
Overnight: Fairmont Jasper Park Lodge
- Day 4:** Jasper / Maligne Lake (B)
Narrated cruise to Spirit Island, afternoon at leisure—enjoy an optional float trip on the Athabasca River, or stroll through the specialty stores in Jasper
Overnight: Fairmont Jasper Park Lodge
- Day 5:** Jasper / Banff (B)
Athabasca Falls, Yoho National Park, evening at leisure
Overnight: Fairmont Banff Springs Hotel
- Day 6:** Banff (B,D)
Banff Gondola ride, Tunnel Mountain, historical hotel tour, wine tasting, afternoon at leisure, special farewell dinner
Overnight: Fairmont Banff Springs Hotel
- Day 7:** Banff / Depart Calgary (B)

Optional Extension: Days 7-10 Banff to Vancouver by rail

Activity Level: Guests should be able to enjoy outdoor walking on uneven ground, be sure-footed on frozen or ice-covered terrain, get in and out of a motor coach without assistance, and be able to manage stairs. Maximum elevation: 7,705 ft.

Program Highlights

- Discover the epic natural beauty of Canada’s Banff National Park, overnighting at beautiful Fairmont Chateau Lake Louise.
- Admire stunning views of alpine meadows, waterfalls, and glaciers along the Icefields Parkway.
- At Peyto Lake, discover what’s considered the best view in Canada.
- Ride a specially designed Ice Explorer onto the Columbia Icefield to photograph and walk the glacier.
- Enjoy the fresh mountain air, forest trails, and panoramic vistas at Fairmont Jasper Park Lodge.
- Marvel at the unparalleled scenery during a narrated cruise on the glacial blue waters of Maligne Lake.
- Ascend Sulphur Mountain on a scenic gondola ride.
- Discover luxurious comforts in the pristine wilderness at Fairmont Banff Springs Hotel.
- What’s Included:** 6 nights accommodations, a welcome reception, meals including 6 breakfasts and 3 dinners, private deluxe motor coach transportation, full guiding services of an Orbridge Expedition Leader, all gratuities, and airport transfers for guests arriving and departing during the suggested times.

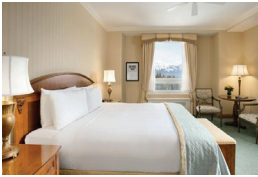
**Subject to change.*

Accommodations (subject to change)

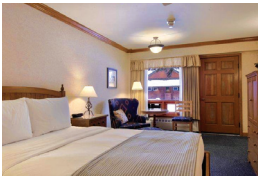
WESTIN CALGARY
Enjoy the well-appointed rooms and easy access to downtown in this comfortable and newly-renovated hotel.



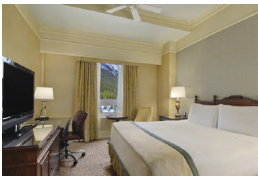
FAIRMONT CHATEAU LAKE LOUISE
Situated in one of the world’s most breathtaking settings, Chateau Lake Louise evokes a sense of timeless beauty, warmth, intimacy, comfort, and Old World charm.



FAIRMONT JASPER PARK LODGE
This rustic lodge offers mountain-inspired atmosphere, outdoor activities, and, located in beautiful Jasper National Park, an extraordinary setting for enjoying nature’s beauty.



FAIRMONT BANFF SPRINGS
Surrounded by lush greenery, this 19th-century structure features turrets, stonework, salons, quintessential decor, and excellent service.



Deluxe Accommodations: Room upgrades are available at Fairmont Chateau Lake Louise, Fairmont Jasper Park Lodge, and Fairmont Banff Springs. At Chateau Lake Louise and Banff Springs, upgrades are to scenic view guest rooms. At Jasper Park Lodge, upgrade is to Lakeview Junior Suite. Upgrade availability is limited and on a first-come, first-served basis.



Extension Itinerary*

- Day 7:** Banff / *Rocky Mountaineer* / Kamloops (B,L)
This morning, board the *Rocky Mountaineer* to travel by rail over the Continental Divide and along Kicking Horse River. Enjoy the vistas as you continue westward to Shuswap Lake with its thousand miles of shoreline. Tonight, enjoy free time in Kamloops.
- Day 8:** Kamloops / *Rocky Mountaineer* / Vancouver (B,L)
Back aboard the *Rocky Mountaineer*, pass through the fertile Thompson Valley and the Fraser Canyon. Arrive early evening to Vancouver.
- Day 9:** Vancouver (B)
With a day at leisure, take time to explore beautiful Vancouver, perhaps venturing to the waterfront, Chinatown, or Stanley Park. You may also choose to participate in one of the offered optional excursions.
- Day 10:** Depart Vancouver (B)

Optional Excursions:
Day Trip to Victoria
Sightseeing Tour to Grouse Mountain
Sunset Dinner Cruise in Vancouver
(Not all excursions listed may be available. Availability is subject to sufficient participation, weather conditions, seasonal suitability and group interests.)

What’s Included

- Rocky Mountaineer* rail transport with upgraded SilverLeaf or GoldLeaf Service. (See service descriptions below.)
- One night accommodations in Kamloops (hotel determined by *Rocky Mountaineer*).
- Two nights at the Fairmont Waterfront Hotel (or similar) in Vancouver.
- Breakfast each morning and two lunches.
- Access to a local host in Vancouver to assist with your plans, all gratuities, and airport transfers for guests on suggested flights.

SilverLeaf Service: Car includes oversized windows, reclining dome-level seats, and seat-side food service.
GoldLeaf Service: Car includes full-length panoramic windows, reclining dome-level seats that rotate to accommodate groups of four, exclusive access to the dining room, and a full galley kitchen offering a gourmet menu with hot food.



Early Reservation Bonus:
See reverse for details.

FREE ORBRIDGE EXPEDITION LIBRARY

Canadian Rockies Parks & Resorts JULY 31 - AUGUST 6, 2017
Banff to Vancouver Extension: August 6-9, 2017

☐ **Option 1:** Reserve online now
at <http://uky.orbridge.com>
or call (866) 639-0079.

☐ **Option 2:** Secure your reservation with
a deposit charged to the credit card below,
or with an enclosed check payable to
Orbridge LLC.

Guest Information:

Guest #1 Name: _____ Class Year _____

Guest #2 Name: _____ Class Year _____

Address: _____

City: _____ State: _____ Zip: _____

Email: _____ Phone: _____ Alt. Phone: _____

Category Preference (if applicable): 1st choice _____ 2nd choice _____

Deposit:

(#) _____ guests joining program (\$850/person) +

(#) _____ guests joining extension (\$500/person) = **Total deposit: \$** _____

Deposit Payment:

☐ Check enclosed ☐ Online Check/ACH ☐ MasterCard ☐ Visa ☐ American Express ☐ Discover

Card #: _____ Exp. date: _____ CVV: _____

Name (as printed on card): _____

Billing address (if different from above): _____

City: _____ State: _____ Zip: _____

**I/we have read, understand, and agree to the full Terms & Conditions at <http://terms.orbridge.com>
and detailed in program documents; and that Orbridge LLC is authorized to charge my credit card
above and/or take my/our deposit for this program.**

Signature: _____ Date: _____

**Mail or fax
reservation form
and deposit to:** Orbridge
P.O. Box 10339, Bainbridge Island, WA 98110
Fax: (206) 452-5655

*Travel insurance is strongly recommended. You will receive travel insurance information from the
UK Alumni Association after your reservation is made. For complete details, call (800) 753-1000,
option 6 or visit <https://alumni.tpaproducts.com/ukaa>.*

Registration, Deposits and Final Payment. To confirm and secure your reservation, a deposit of \$850 per person per program, a deposit for any extension(s), and any non-refundable advanced payments, payable by check, online check/ACH, money order, wire transfer of same day U.S. funds, or major credit card, is due at the time of registration. Final payment, including any extension(s) and optional(s), is payable by check, online check/ACH, money order, or wire transfer of same day U.S. funds ONLY and due no later than 90 days prior to the scheduled program departure date. If your reservation is made fewer than 90 days prior to departure, the entire cost of the program, including any extension(s) and optional(s), is due at the time of registration by check, money order, or wire transfer of same day U.S. funds ONLY. If final payment is not received by Orbridge at least 90 days prior to the scheduled program departure date, Orbridge may, at any time and with or without notice, cancel your reservation in its sole discretion with no right of refund. All payments we receive from you are herein defined as "Payments." CST#2098750-40 WST#602828994

Cancellations and Refunds. All cancellations must be submitted to Orbridge in writing and will be subject to a cancellation fee ("Cancellation Fee") as follows: (a) if the cancellation notice is received by Orbridge 275 or more calendar days prior to the scheduled departure date, all deposits will be fully refunded; (b) if the cancellation notice is received by Orbridge between 274 and 151 days prior to the scheduled departure date, the Cancellation Fee will be \$500 per person per program and \$300 per person per program for extensions; (c) if the cancellation notice is received by Orbridge between 150 and 91 days prior to the scheduled departure date the Cancellation Fee will be the full deposit per person per program including any extension; (d) if the cancellation notice is received by Orbridge 90 or fewer days prior to the scheduled departure date, the Cancellation Fee will be the full program price. In addition to and not in lieu of the foregoing, a Cancellation Fee equal to 100% of the carrier charge applies to all non-refundable airfares due to your cancellation made at any time prior to the scheduled program departure date, as applicable. Refunds, if any, of any Payments in excess of the aggregate Cancellation Fee shall be processed within 30 calendar days of our receipt of your written notice.

For complete Terms & Conditions, visit <http://terms.orbridge.com> | Copyright © 2016 Orbridge, LLC | www.orbridge.com | (866) 639-0079

*Special group rate; limited offer. Rates are per person based on double occupancy except where noted as Single, in U.S. dollars. Airfare not included. Single availability limited. Deluxe Accommodations package includes room upgrades at the following properties: Fairmont Chateau Lake Louise, Fairmont Jasper Park Lodge, and Fairmont Banff Springs Hotel. Deluxe Package availability limited. **A complement to the educational component of this journey, Expedition Libraries are curated collections of useful resources and background reading tailored to this program. Please your deposit on or before the specified date, and one Expedition Library per room will be sent upon receipt of final payment. Libraries may be purchased; please call for details.

UKY/CRR.17

FREE ORBRIDGE
EXPEDITION LIBRARY

When you reserve
by TBD, 2016**

Canadian Rockies Parks & Resorts

JULY 31 - AUGUST 6, 2017

Special Alumni Rate: **Save more than \$800** per couple

University of Kentucky Alumni Association
400 Rose Street
Lexington, KY 40506-0119

PRSRT STD
U.S. POSTAGE
PAID
PERMIT NO. 825
SAN DIEGO, CA

What Guests Are Saying...

The trip was fabulous and Orbridge came through with their trademark level of high quality service, educational excellence, and fun. Our Expedition Leader's expertise as a naturalist and retired parks manager provided wonderful background explaining the geology, geography, and flora and fauna of the area—with a touch of humor.

~Karen and David S., Ann Arbor, MI

All of the accommodations were way beyond our expectations. Someday we will return.

This was a bucket list trip—along with the train ride from Banff to Vancouver.

~Greg & Sue W., Cary, NC

UKY/CRR.17

JULY 31 - AUG. 6, 2017

Special Alumni Rate

SAVE MORE THAN \$800
per couple

CANADIAN ROCKIES PARKS & RESORTS

Dear Alumni and Friends,

Head north with us this summer for a peak-season journey to Canada's glorious Rocky Mountains, relaxing at legendary resorts including Fairmont Jasper Park, Fairmont Banff Springs, and Fairmont Chateau Lake Louise.

Admire the proportions and beauty of the magnificent ranges in Banff and Jasper National Park, the crystal waters of Lake Louise and Maligne Lake, and the glacial masses of the Columbia Icefields. Each resort offers outdoor activities to choose from: canoe, golf, or walk nearby trails to take in the fresh air, inspiring landscapes, and Rocky Mountain wildlife.

Space is limited. Our rates for University of Kentucky guests on this departure represent a significant savings (more than \$800 per couple) over that of non-affiliated guests, so be certain to reserve your spot today and share this brochure with family and friends who may be interested in traveling with you! Please reserve online at <http://uky.orbridge.com>, by calling (866) 639-0079 or by returning the enclosed reservation form.

Sincerely,



Leslie Hayes
Membership and Marketing Specialist

Free Expedition Library

AN EARLY RESERVATION BONUS

Reserve your space by **TBD, 2016** to receive the FREE
Orbridge Expedition Library we've assembled for this program.

*This exclusive gift is to thank you for joining us early. Guests who reserve
after the specified date may purchase libraries. Call for details.*

*** Feel the Pull of All Points North ***