

2007 Undergraduate Fast Facts

Most Active Academic Internship / Co-op Sites

# Students	Site
42	University of Kentucky
19	Lexmark
18	General Electric
16	Commonwealth of Kentucky
14	Fayette County Public Schools
11	Toyota
7	Lexington Legends
6	First Investors
5	WLEX—18
5	Walt Disney World
5	Clear Channel Radio
4	Commonwealth Attorney's Office
4	Marathon Petroleum
4	Smiley Pete Publishing
3	Lexington Area Sports Association
3	Deloitte & Touche
3	Belcan

Internship / Co-op Pay Rates

261 students reported hourly pay rates

\$12.64	Average hourly pay rate
37%	Pay rates range from \$14.25—25.10/hour
37%	Pay rates range from \$9.38—14.00/hour
26%	Pay rates range from \$5.15—9.00/hour

2007 Snapshot*

- 66% of graduates responding to survey accepted employment or are attending graduate or professional school:
 - 37% accepted employment
 - 29% are attending graduate or professional school
- 31% of graduates responding to survey are seeking positions

Geographic Distribution of Recent Graduates Reporting Employment

% of Students	State
70%	KY
7%	OH
4%	TN
2%	IN
15%	Other states
2%	Foreign countries (8 total)

Employers with the Most On-Campus Interviews

# Interviews	Employer
75	General Electric
65	Cummins Inc.
58	PricewaterhouseCoopers LLP
49	Marathon Petroleum Company LLC
44	Norfolk Southern
44	Terex
43	Brooksource
40	Trane
38	Dean, Dorton, & Ford
35	Aldi
35	Osram Sylvania
34	Jefferson County Public Schools
33	Kroger
33	Target
32	Ashland, Inc.
32	Total Quality Logistics
28	BB&T
28	Ernst & Young
28	KPMG, LLP
28	Sherwin-Williams
27	SSOE
25	BKD, LLP
25	NASA Marshall Space
24	Crowe, Chizek & Company LLP
24	First Investors

Average Starting Salaries of Class of 2007 Graduates

\$40,237	All Students
\$32,125	Agriculture & Human Environmental Sciences (n=47)
\$33,403	Arts & Sciences (n=48)
\$38,794	Business & Economics (n=87)
\$32,534	Communications & Information Studies (n=36)
\$34,733	Design (n=6)
\$36,437	Education (n=21)
\$51,000	Engineering (n=74)
\$28,357	Fine Arts (n=7)
\$44,486	Nursing (n=7)
\$27,350	Social Work (n=7)

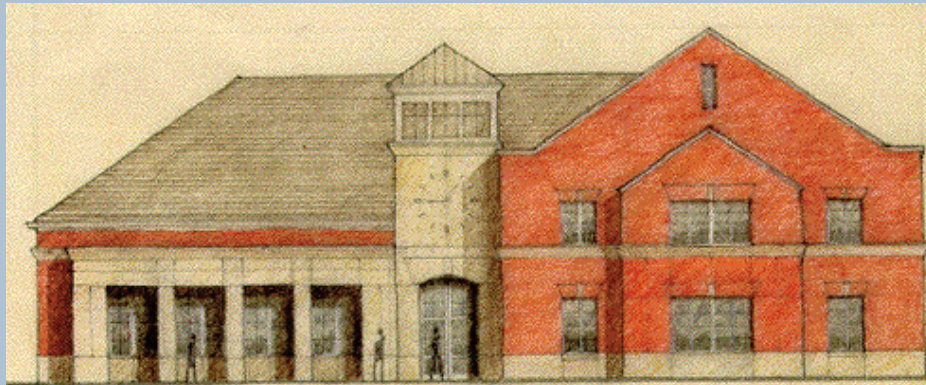
*Note

This is a summary of data collected by the James W. Stuckert Career Center (JWSCC) about employment of undergraduate students graduating December 2006-September 2007. Data was collected from Wildcat Careerlink (JWSCC's web-based career services management system previously called CyberCat) and a survey of the 2006-07 graduating seniors via phone and email up to 13 months after graduation. A total of 1,339 responses were collected from 3,951 students surveyed for an overall 34% response rate.

Employment Search Resources Used by Recent Graduates

40%	Internship, Co-op, Part-time or Summer Job Employer
36%	James W. Stuckert Career Center Wildcat CareerLink system
28%	Direct contact with employers
25%	Relative or friend
23%	Career Fairs
22%	James W. Stuckert Career Center counselors and satellite offices in colleges
20%	Employer Web sites (for research and job listings)
20%	Faculty
10%	Internet job boards
7%	Networking Receptions
6%	Classified ads
5%	Other

Students were asked to select their top three resources



Stuckert Building Facts and Employer Amenities

- 14,000+ total square feet with a 1,600 square foot career library
- 3 digital practice interview rooms
- 15 private interview rooms—outgoing phones and wireless access in each
- 50 seat multipurpose meeting room
- Private employer lounge with restroom, kitchen facilities, and laptop modem access
- Convenient parking adjacent to the building for employers

To schedule your next on campus interview date, learn about accessing our graduates and/or advertise your job announcements and internships...

Call Caroline Hellard, Employer Relations Associate, at 859-257-0550. Our online system enables employers to easily post job descriptions, view applicant resumes and cover letters, and render decisions regarding interview candidates all from a single software application.

859.257.2746

408 Rose St. Lexington KY 40506-0494

www.uky.edu/CareerCenter

An Equal Opportunity University