

2005 Undergraduate Fast Facts

Most Active Internship Sites

# Students	Site
68	University of Kentucky
18	Walt Disney World
10	Lexington-Fayette Urban Co. Government
8	Veterans Administration Medical Center
7	Commonwealth of Kentucky General Assembly
7	Lexmark International
6	Clear Channel Communications
6	WLEX-TV 18
5	Lexington Area Sports Authority
5	Merrill Lynch
4	Eastern State Hospital
4	General Electric
4	Morgan Stanley Dean & Witter
3	First Investors Corporation
3	Golden & Walters
3	Lexington Horsemen
3	Nancy Barron & Associates
3	Summer, McCrary & Sparks
3	WKYT-TV 27

Internship Pay Rates

164 students reported pay rates

\$11.82	Average pay rate
37%	Pay rates range from \$12.50—25.00/hour
34%	Pay rates range from \$7.50—12.00/hour
29%	Pay rates range from \$3.75—7.50/hour

Geographic Distribution of Recent Graduates Reporting Employment

# Students	State
174	KY
18	OH
13	IN
12	GA
35	Other states (16 total)
3	Foreign countries (3 total)

*Note

A summary of data collected by the James W. Stuckert Career Center (JWSCC) from July 2004—September 2005 about employment of seniors graduating in 2004-05. Data was collected from CyberCAT (JWSCC's web-based career services management system), internship learning contracts, and a survey of the 2004-05 graduating seniors. A total of 687 responses were collected from 3468 students surveyed for an overall 20% response rate.

2005 Snapshot*

- 1,423 employers in 44 states utilized Career Center services
- 70% of graduates responding to survey accepted employment or are attending graduate or professional school:
 - 42% accepted employment
 - 28% are attending graduate or professional school
- 29% of graduates responding to survey are seeking positions
- 70% of graduates responding to survey who have accepted employment are employed in a career related to their major

Employers with the Most On-Campus Interviews

# Interviews	Employer
102	Philip Morris
100	General Electric
67	Belcan
56	Humana
44	PricewaterhouseCoopers
40	Cummins Inc.
37	Wells Fargo
35	Marathon Ashland Petroleum
32	Dean, Dorton & Ford
32	Ferguson Enterprises
30	Deloitte & Touche
30	KPMG
28	National City Corp
24	IBM
22	Summit Energy
22	Walgreen's
19	Enterprise Rent-A-Car
19	Equitable Production
19	Schering-Plough Research Institute
17	Ernst & Young

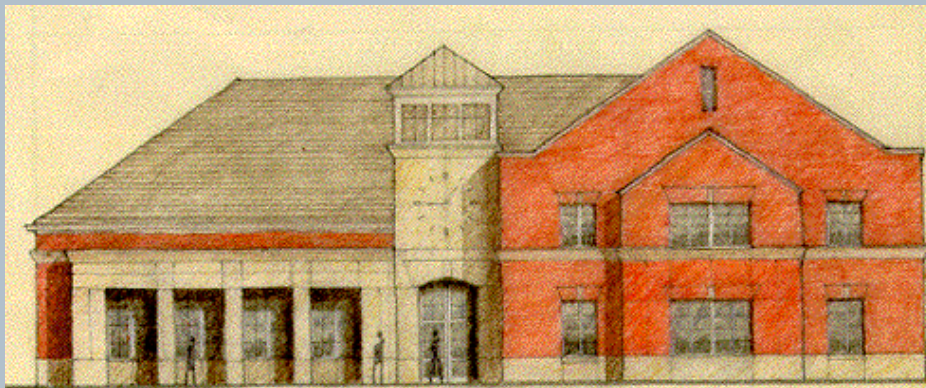
Average Starting Salaries of Class of 2005 Graduates

\$37,648	All Students
\$30,932	Agriculture & Human Environmental Sciences (n=26)
\$27,492	Arts & Sciences—Humanities (n=18)
\$25,497	Arts & Sciences—Sciences (n=6)
\$35,381	Business & Economics (n=64)
\$26,258	Communications & Information Studies (n=13)
\$35,333	Design (n=3)
\$29,237	Education (n=6)
\$46,606	Engineering (n=95)
\$31,150	Fine Arts (n=2)
\$40,020	Nursing (n=4)
\$24,344	Social Work (n=5)

Employment Search Resources Used by Recent Graduates

40%	James W. Stuckert Career Center CyberCAT system
24%	Internship, Co-op, Part-time or Summer Job Employer
19%	Employer Websites (for research and job listings)
16%	Internet job boards
16%	James W. Stuckert Career Center counselors and satellite offices in colleges
14%	Direct contact
14%	Relative or friend
11%	Career Fairs
11%	Faculty
9%	Classified ads
6%	Other

Students were asked to select any that were applicable



Stuckert Building Facts and Employer Amenities

- 14,000+ total square feet with a 1,600 square foot career library
- 3 practice interview rooms with video cameras, VCR's and TV's
- 15 private interview rooms—outgoing phones and wireless access in each
- 50 seat multipurpose meeting room
- Private employer lounge with restroom, kitchen facilities, and laptop modem access
- Convenient parking adjacent to the building for employers

To schedule your next on campus interview date, learn about accessing our graduates and/or advertise your job announcements and internships...

Call Sally Chesser, Manager of Corporate Relations, at 859.257.4040. Our CyberCAT system, powered by eRecruiting.com, enables employers to easily post job descriptions, view applicant resumes and cover letters, and render decisions regarding interview candidates all from a single software application.

859.257.2746

408 Rose St. Lexington KY 40506

www.uky.edu/CareerCenter