

2006 Undergraduate Fast Facts

Most Active Academic Internship Sites

# Students	Site
85	University of Kentucky
18	Commonwealth of Kentucky
12	Walt Disney World
8	Lexington-Fayette Urban County Gov.
6	Meridian Communications
6	Merrill Lynch
6	WLEX Channel 18
5	Lexington Legends
5	United States Legislature
4	Eastern State Hospital
4	Fayette County Public Schools
4	UBS Financial Services, Inc.
3	Ad-Success Marketing
3	First Investors Corporation
3	Miller, Griffin, and Marks
3	Scottrade Financial
3	Tuska Center for Contemporary Art

Internship Pay Rates

220 students reported hourly pay rates

\$10.74	Average hourly pay rate
35%	Pay rates range from \$11.40—22.50/hour
33%	Pay rates range from \$8.15—11.12/hour
30%	Pay rates range from \$5.15—8.00/hour

2006 Snapshot*

- 69% of graduates responding to survey accepted employment or are attending graduate or professional school:
 - 37% accepted employment
 - 32% are attending graduate or professional school
- 29% of graduates responding to survey are seeking positions

Geographic Distribution of Recent Graduates Reporting Employment

# Students	State
215	KY
15	OH
12	IN
6	GA
64	Other states (21 total)
5	Foreign countries (2 total)

Employers with the Most On-Campus Interviews

# Interviews	Employer
70	General Electric
58	NVR Incorporated/Ryan Homes
48	PricewaterhouseCoopers LLP
45	Brooksource
44	Cummins Inc.
43	Humana
37	Marathon Petroleum Company LLC
36	BB&T Corporation
34	Procter & Gamble
34	Woodmen of the World
33	Dean, Dorton & Ford
32	Deloitte & Touche USA LLP
31	CSX Transportation
28	Summit Energy
27	Enterprise Rent-A-Car
27	University Directories
26	Ingersoll Rand
23	Aldi Inc.
23	BKD, LLP
23	Defense Finance & Accounting Service
22	Ernst & Young
22	KPMG LLP
21	Belcan Advanced Engineering
21	Crowe, Chizek & Company LLP
20	Wolseley

Average Starting Salaries of Class of 2006 Graduates

\$35,056	All Students
\$29,654	Agriculture & Human Environmental Sciences (n=35)
\$30,753	Arts & Sciences — Humanities (n=34)
\$29,250	Arts & Sciences — Sciences (n=2)
\$36,354	Business & Economics (n=92)
\$28,025	Communications & Information Studies (n=20)
\$32,139	Design (n=9)
\$30,125	Education (n=16)
\$45,889	Engineering (n=41)
\$32,500	Fine Arts (n=2)
\$38,942	Nursing (n=13)
\$29,667	Social Work (n=3)

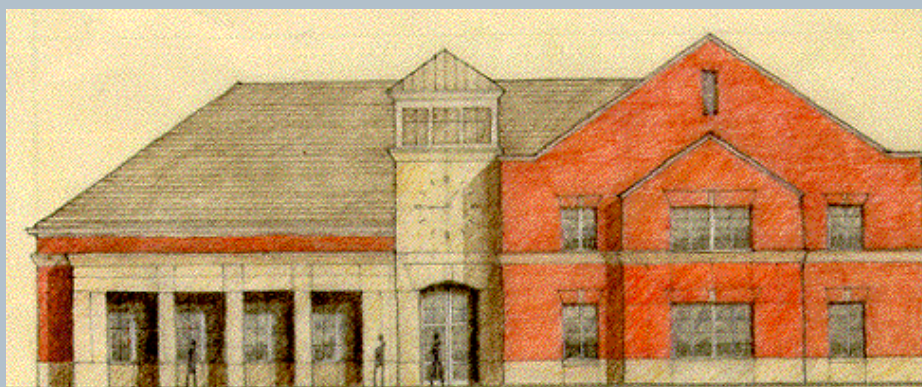
* Note

A summary of data collected by the James W. Stuckert Career Center (JWSCC) from December 2005-September 2006 about employment of seniors graduating in 2005-06. Data was collected from CyberCAT (JWSCC's web-based career services management system), internship learning contracts, and a survey of the 2005-06 graduating seniors. A total of 1,124 responses were collected from 3,872 students surveyed for an overall 29% response rate.

Employment Search Resources Used by Recent Graduates

18%	James W. Stuckert Career Center CyberCAT system
13%	Relative or friend
12%	Direct contact
11%	Employer Websites (for research and job listings)
10%	Internship, Co-op, Part-time or Summer Job Employer
8%	Internet job boards
6%	James W. Stuckert Career Center counselors and satellite offices in colleges
5%	Career Fairs
5%	Other
4%	Faculty
3%	Classified ads
2%	Networking Receptions

Students were asked to select their top three resources



Stuckert Building Facts and Employer Amenities

- 14,000+ total square feet with a 1,600 square foot career library
- 3 digital practice interview rooms
- 15 private interview rooms—outgoing phones and wireless access in each
- 50 seat multipurpose meeting room
- Private employer lounge with restroom, kitchen facilities, and laptop modem access
- Convenient parking adjacent to the building for employers

To schedule your next on campus interview date, learn about accessing our graduates and/or advertise your job announcements and internships...

Call Sally Chesser, Manager of Corporate Relations, at 859-257-4040, or Carolyn Williams, Employer Relations Associate, at 859-257-0550. Our online system enables employers to easily post job descriptions, view applicant resumes and cover letters, and render decisions regarding interview candidates all from a single software application.

859.257.2746

408 Rose St. Lexington KY 40506

www.uky.edu/CareerCenter