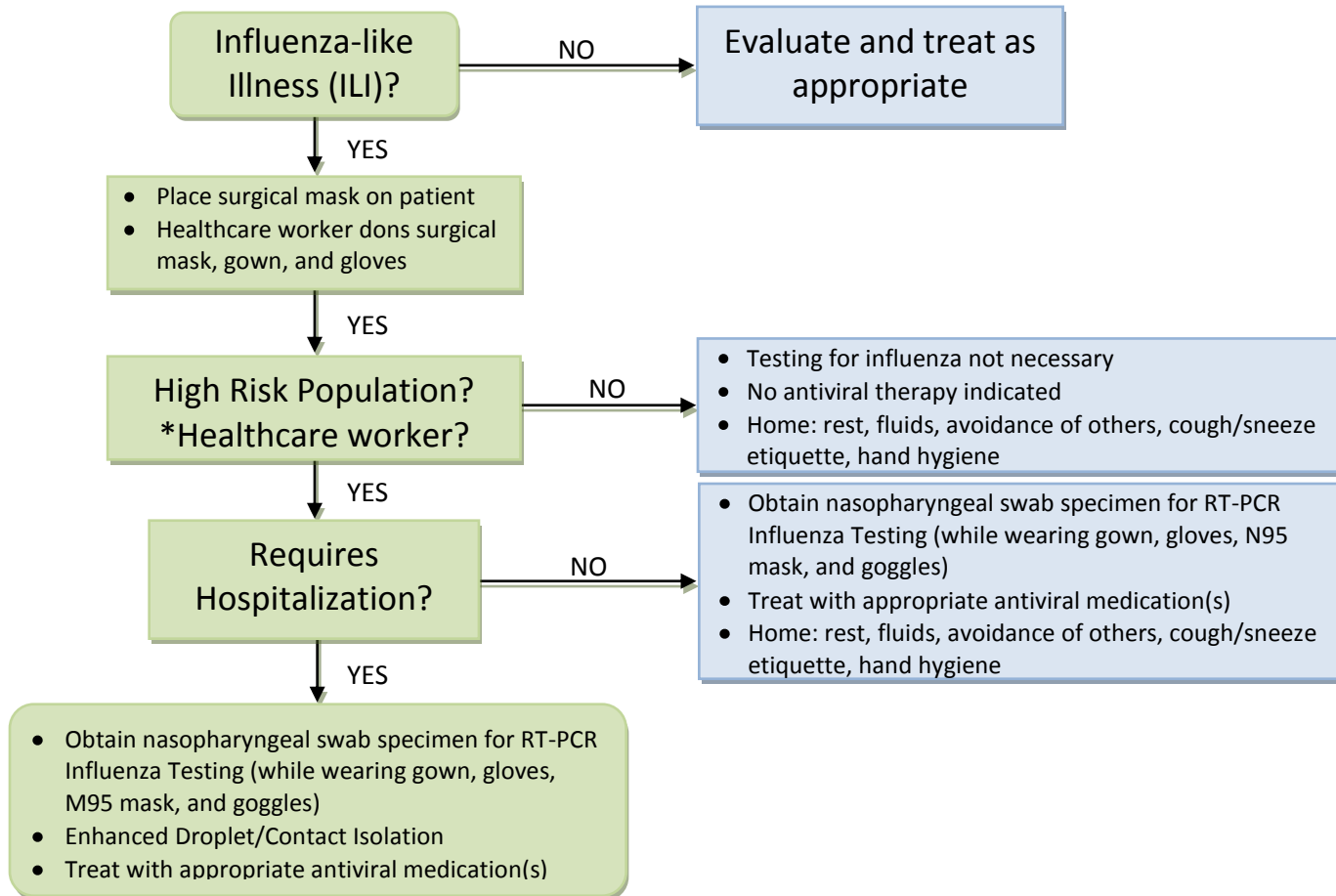


Algorithm for Evaluation and Treatment of Patients with Suspected Influenza Infection

Current as of September 23, 2009



*Not necessarily "high risk" but should be evaluated and treated similarly

Influenza-like Illness (ILI)	High Risk Populations	Signs, Symptoms Suggesting Need for Hospitalization
<p><i>Rapid onset of</i></p> <ul style="list-style-type: none"> • Temperature ≥ 100.0 F • Cough • Sore throat <p>In the absence of a known cause other than influenza</p> <p>Additional symptoms associated with seasonal and Novel H1N1 Influenza that should be assessed in patients presenting with ILI:</p> <ul style="list-style-type: none"> • Fatigue, body aches, chills, congested/runny nose, headache • 24% of patients with H1N1 Flu will also have vomiting and/or diarrhea 	<ul style="list-style-type: none"> • Children younger than 2 years old • Adults 65 years of age and older • Persons with the following conditions: <ul style="list-style-type: none"> ○ Chronic pulmonary (including asthma), cardiovascular (except hypertension), renal, hepatic, hematological (including sickle cell disease), neurologic, neuromuscular, or metabolic disorders (including diabetes mellitus); ○ Immunosuppression, including that caused by medications or by HIV; ○ Pregnant women; ○ Persons younger than 19 years of age who are receiving long-term aspirin therapy ○ Residents of nursing homes and other chronic-care facilities. 	<p>ADULTS:</p> <ul style="list-style-type: none"> • Difficulty breathing or shortness of breath • Pain or pressure in the chest or abdomen • Sudden dizziness • Confusion • Severe or persistent vomiting • Flu-like symptoms improve but then return with fever and worse cough <p>CHILDREN:</p> <ul style="list-style-type: none"> • Fast breathing or trouble breathing • Bluish or gray skin color • Not drinking enough fluids • Severe or persistent vomiting • Not waking up or not interacting • Being so irritable that the child does not want to be held • Flu-like symptoms improve but then return with fever and worse cough