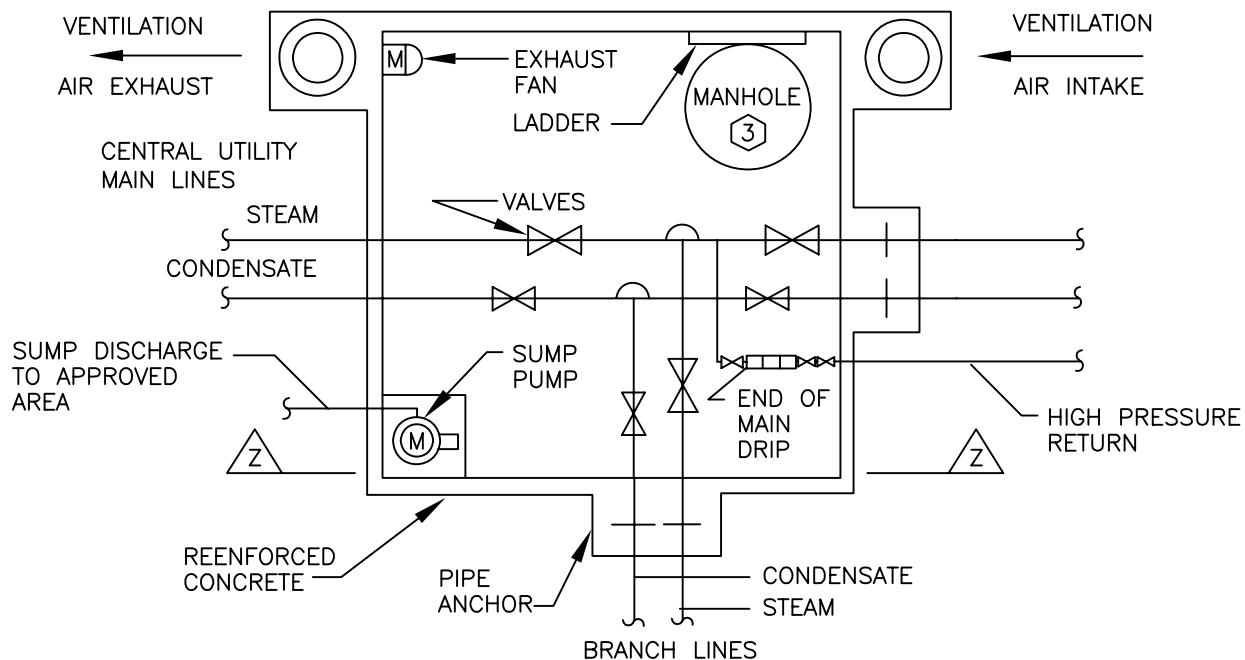
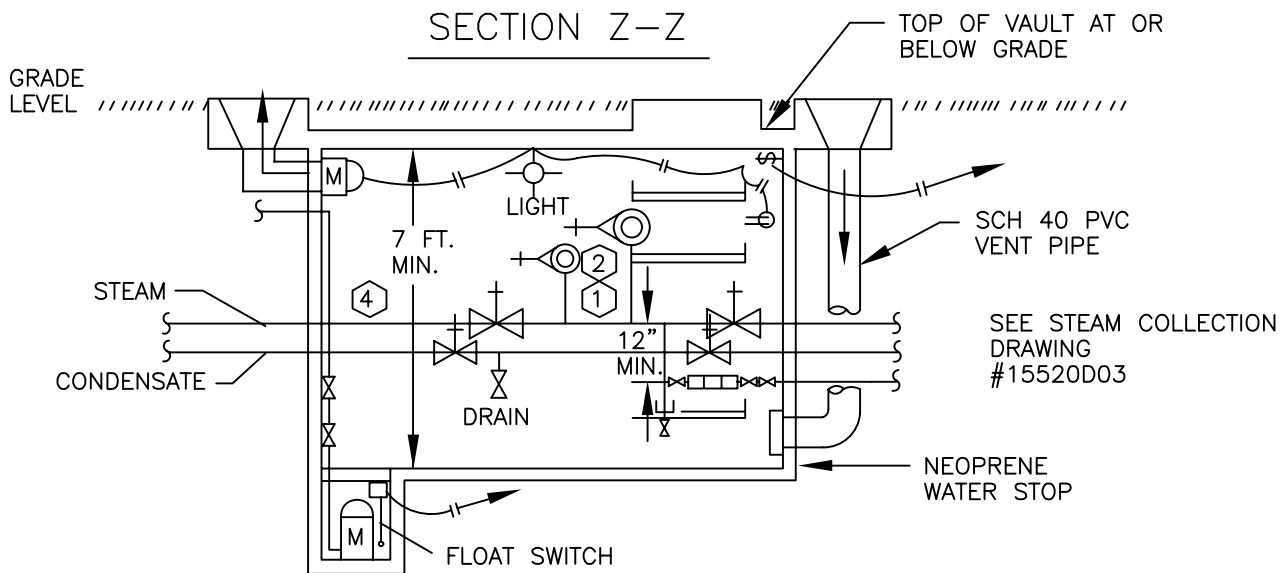


TYPICAL STEAM VAULT

PLAN VIEW



SECTION Z-Z



NOTES: 

1. Tap main lines from the top of the line.
2. Valve stems to be at or above the horizontal.
3. Manhole large enough to remove the largest valve.
4. Conduit entrance with gland seal, vent and drain.
5. Drip leg to be full size of steam pipe.
4. Drip leg to have 1" manual drain valve on bottom.

UK

UNIVERSITY OF KENTUCKY DESIGN & CONSTRUCTION STANDARDS

DRAWN BY MA
 APP. BY MA
 DATE 11/30/90

REVISION	DATE
MJD	12/03/92

TITLE : STEAM VAULT

DRAWING NO.
 15520D02