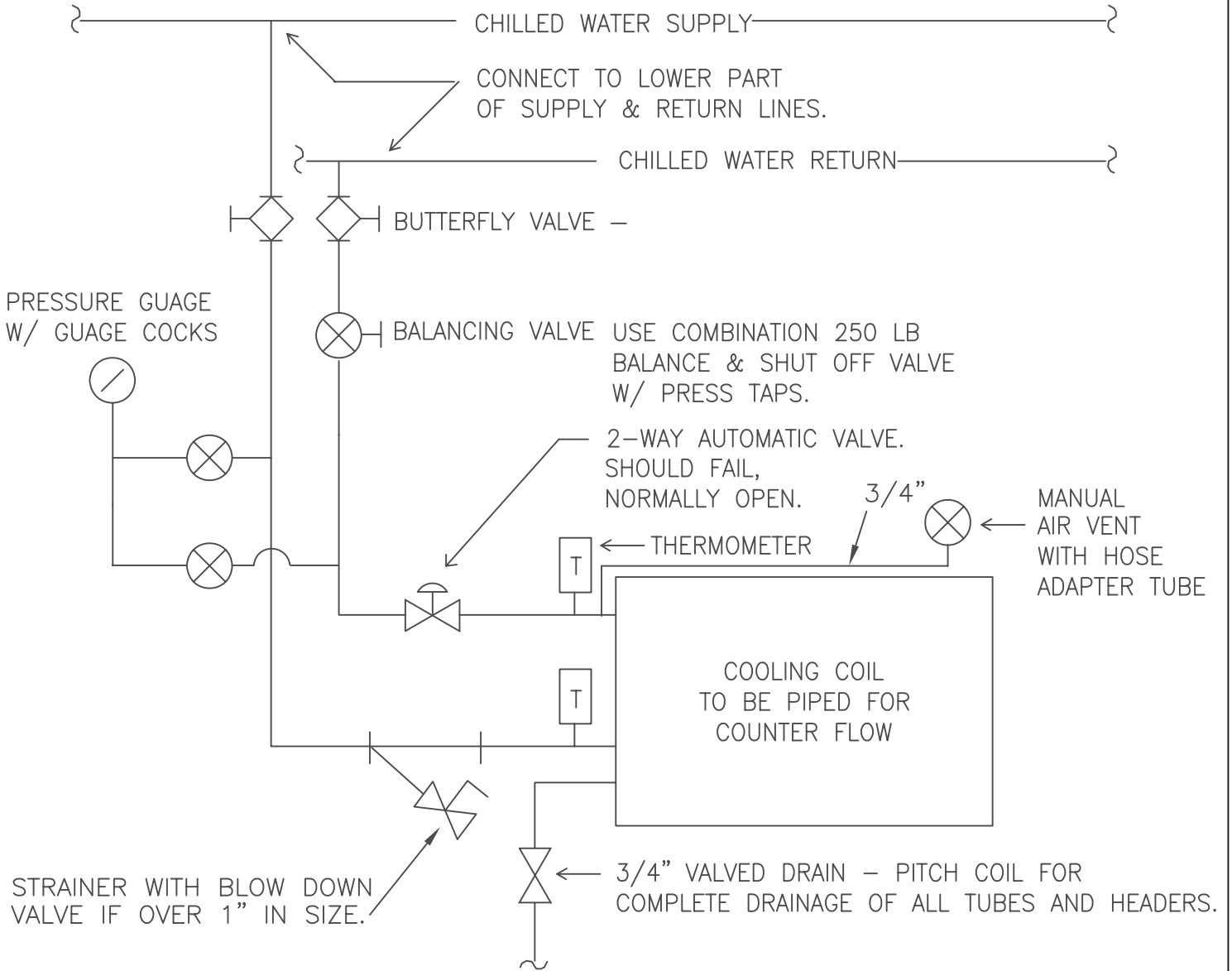


TYPICAL CHILLED WATER COIL PIPING

NOTE: This drawing is for the main campus systems.
Community college systems are to be judged individually.



NOTES:

- 250 PSI minimum pressure rating (main campus system).
- 5 PSI maximum differential pressure between CWS and CWR campus mains.

SCALE: NONE



UNIVERSITY OF KENTUCKY DESIGN & CONSTRUCTION STANDARDS

DRAWN BY <u>GSB</u>	REVISION DATE GSB 11/2/89	TITLE : CHILLED WATER COIL PIPING	DRAWING NO.
APP. BY <u>MA</u>	RLM 11/26/90		
DATE <u>7/86</u>	JG 2/28/91		<u>15855D01</u>