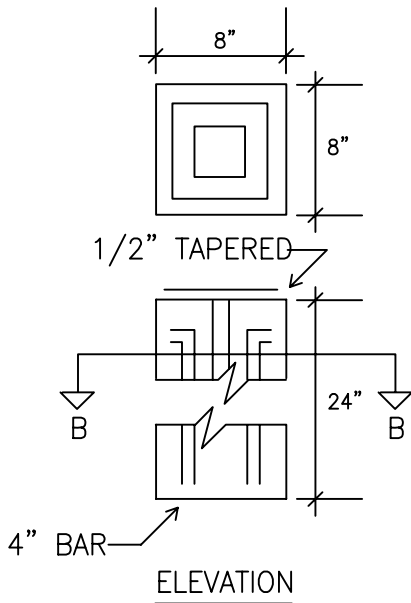
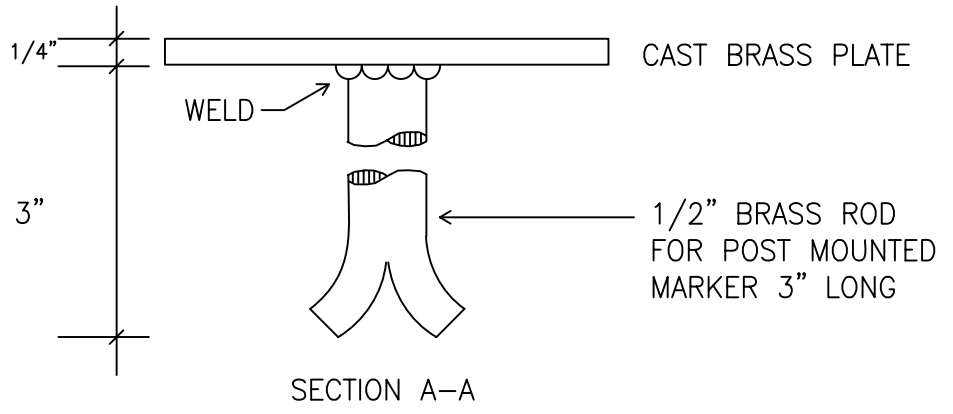
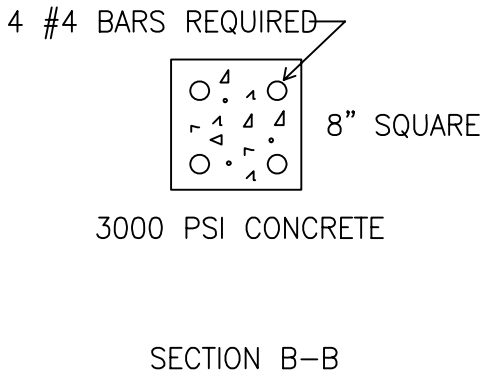
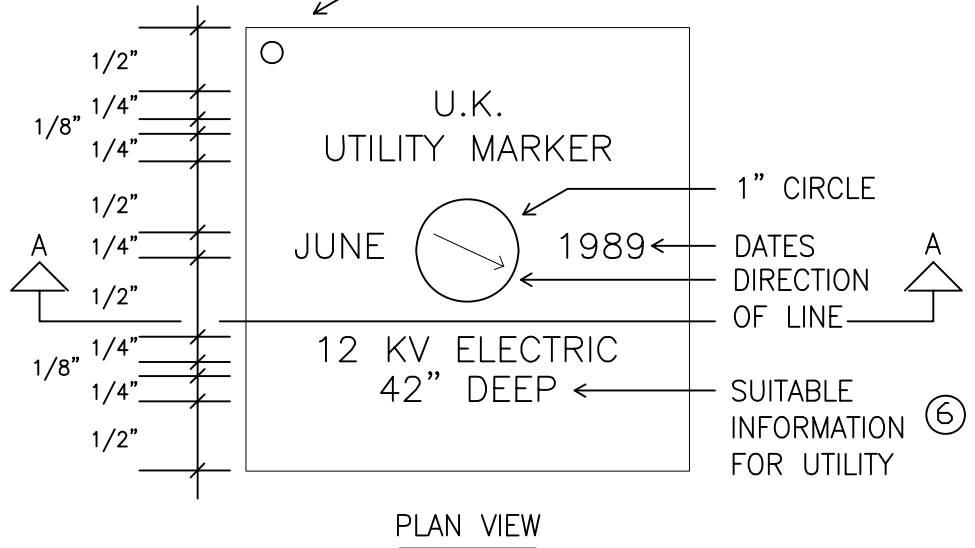


BRASS MARKER PLATE



OPTIONAL COUNTER SINK HEAD BRASS SCREWS IN AN ANCHOR FOR WALL MOUNT (4 PLACES).



NOTES:

1. The contractor shall provide utility markers at each building entrance, at each bend and at each road crossing.
2. Brass marker is cast by Bruce Fox Company, New Albany, Indiana. or approved equal.
3. Use suitable information (letter shown above is for example only). Use raised type lettering.
4. Provide an additional utility marker for all existing utilities. identified during the subject project.
5. Brass marker must be set flush in concrete when placed in the ground or roadbed.
6. Refer to 02600N01 for legend.



UNIVERSITY OF KENTUCKY DESIGN & CONSTRUCTION STANDARDS

DRAWN BY <u>RMN</u>	REVISION GSB	DATE 11/2/89	TITLE : UTILITY MARKER	DRAWING NO.
APP. BY <u>MA</u>				
DATE <u>7/86</u>				<u>02600D01</u>