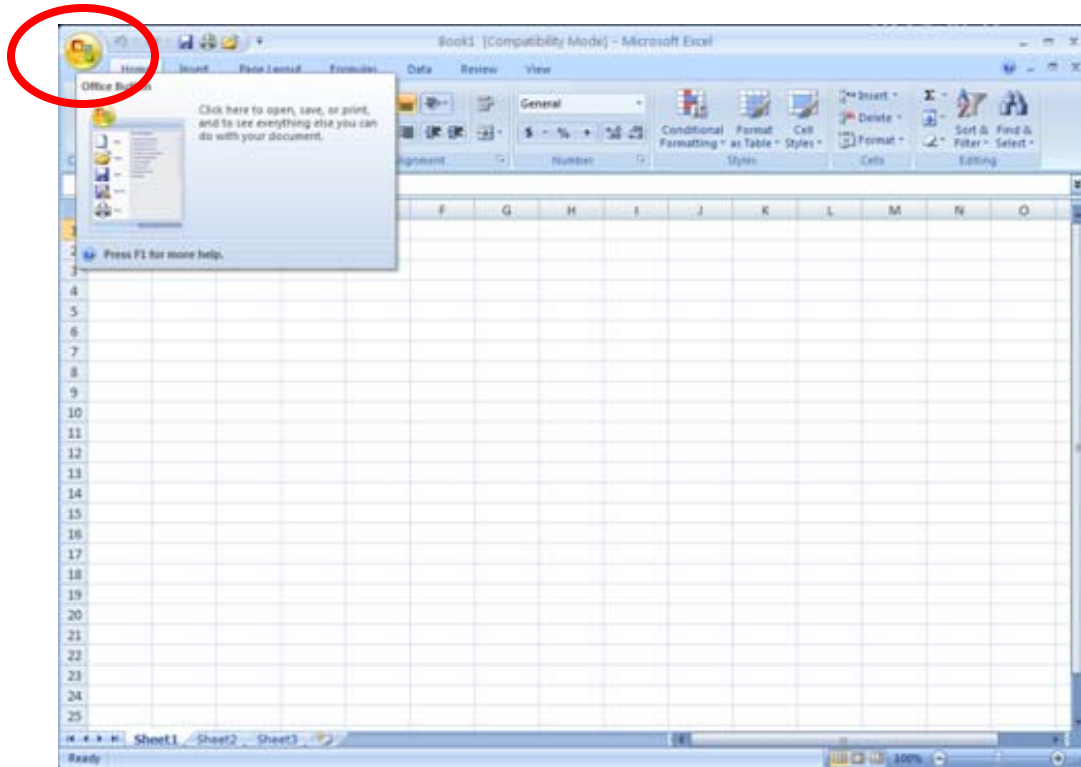


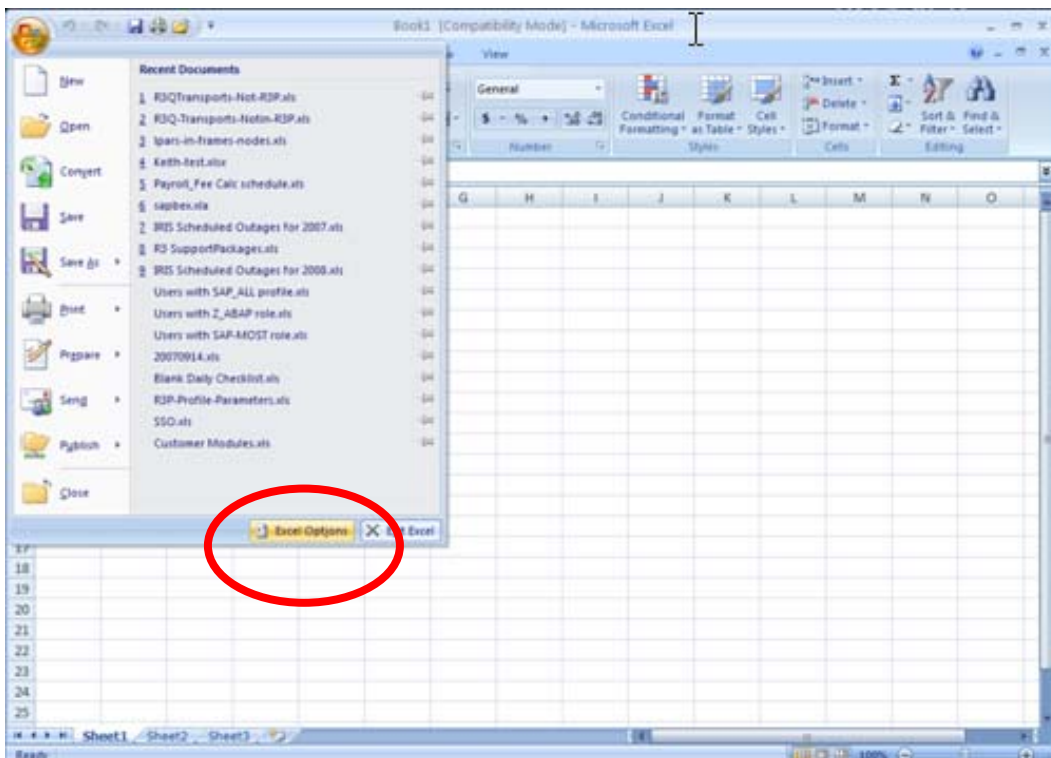
Excel 2007 Settings, SAP, and Business Warehouse (BW)

Excel 2007 works well with SAP and BW, as long as you select the correct MacroSettings values.

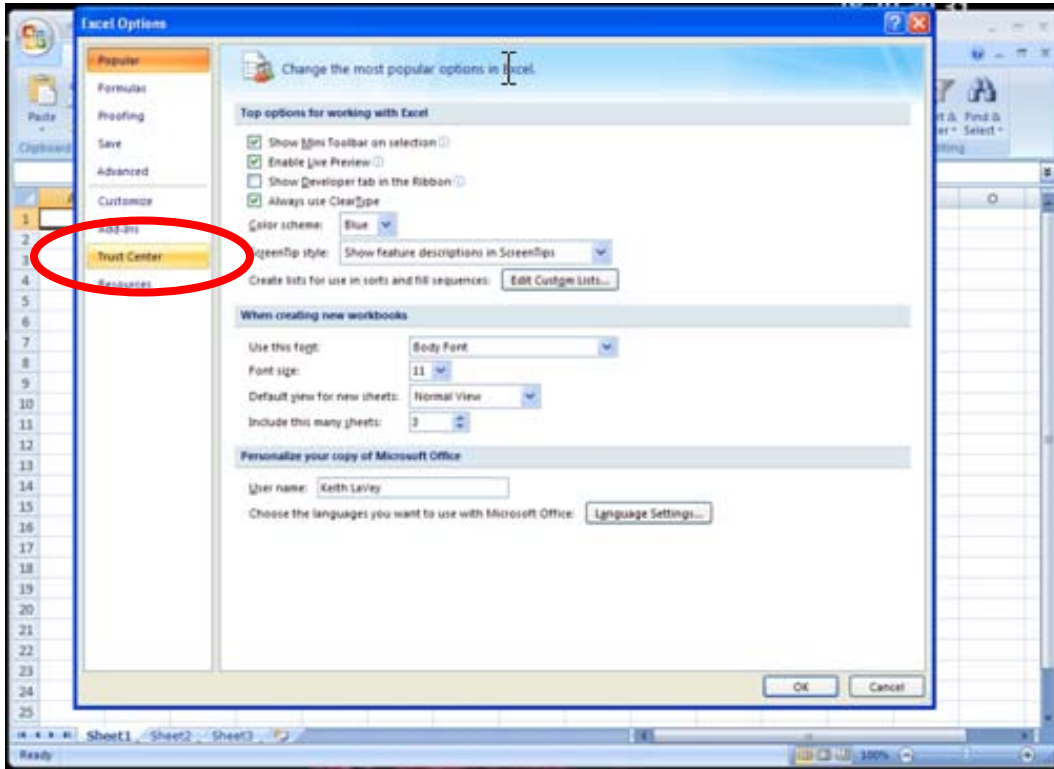
1. Open Excel 2007 and click the **Office Button** (in the upper-left corner of the screen)



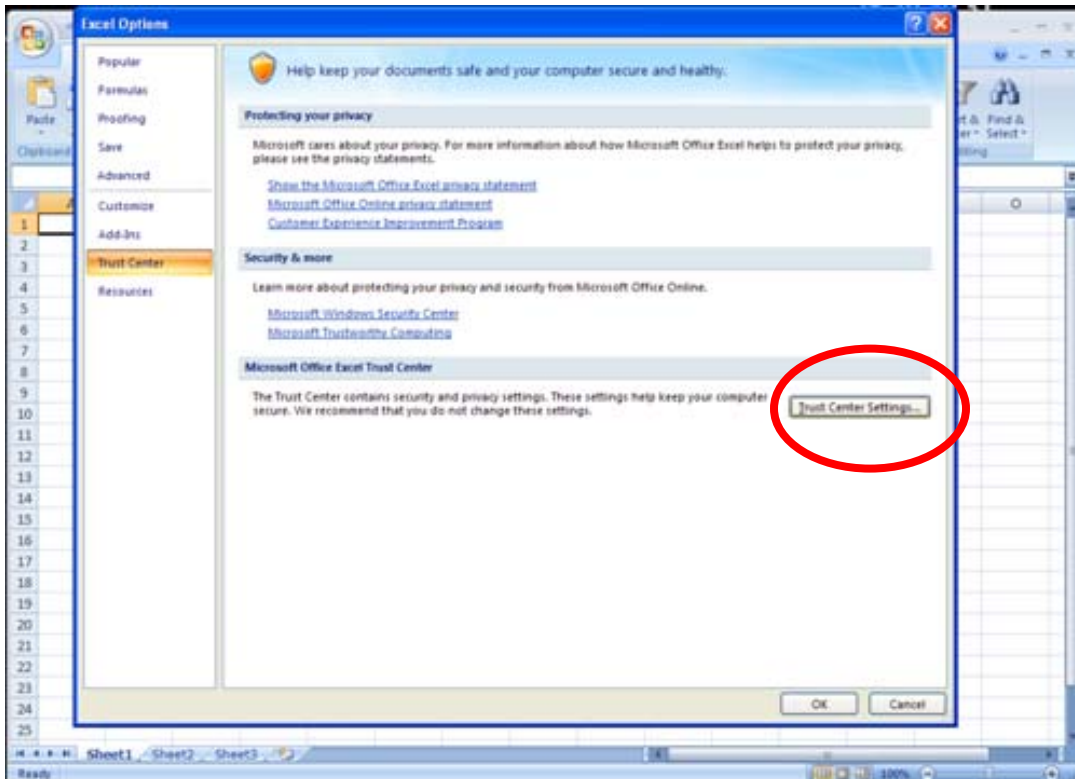
2. On the menu that appears, click the **Excel Options** button.



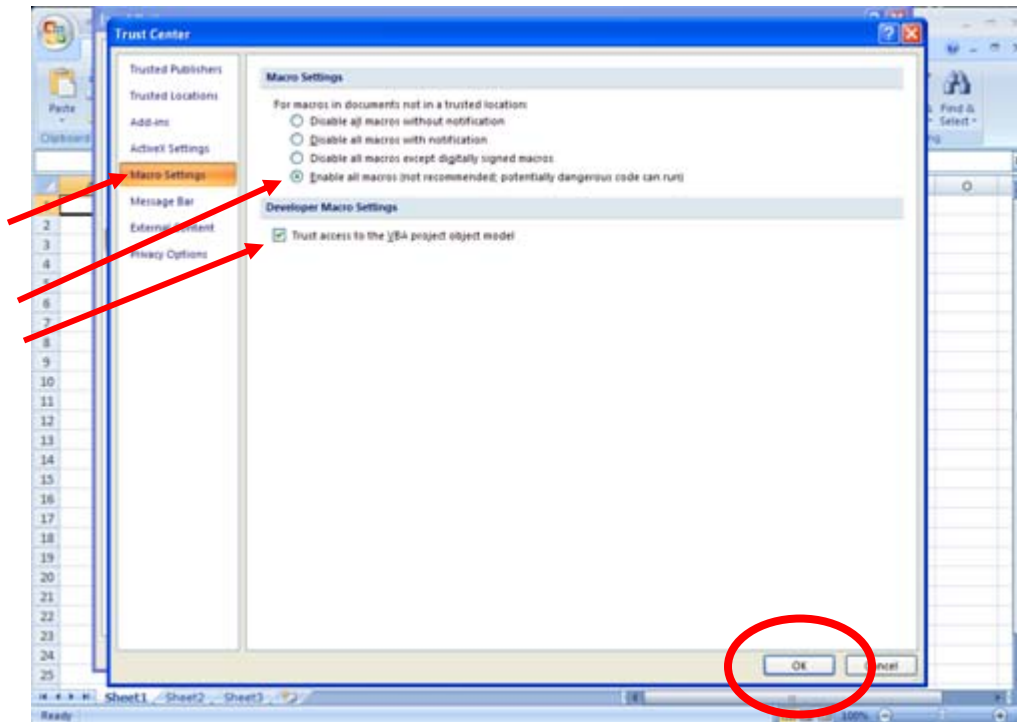
3. On the **Excel Options** window, click **Trust Center** in the left panel.



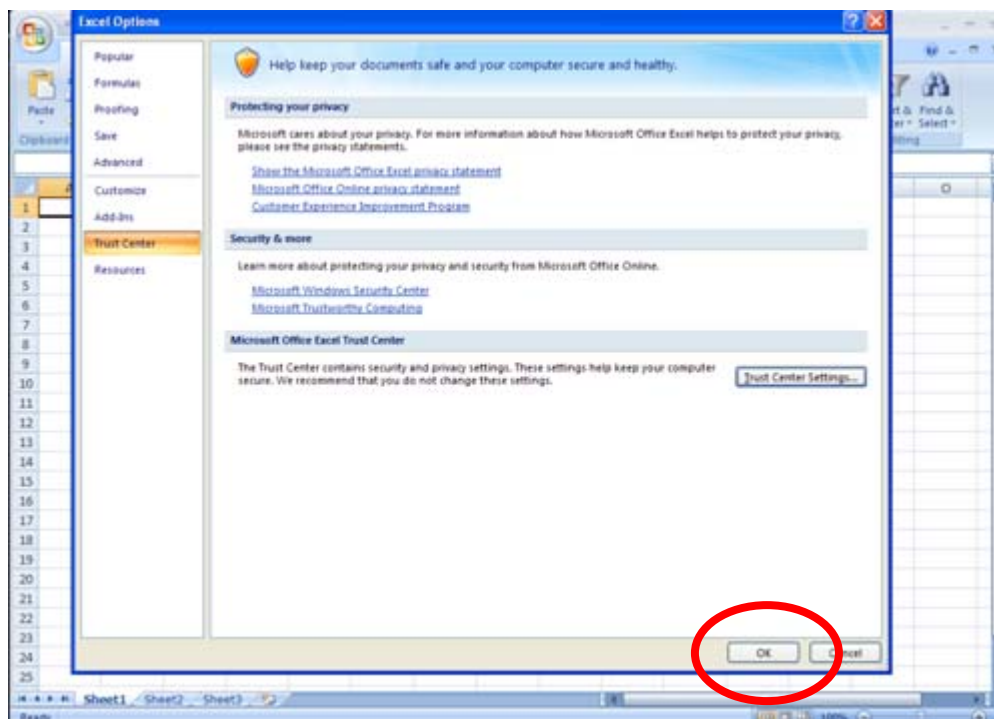
4. On the **Excel Options** window, click the **Trust Center Settings...** button.



5. On the **Trust Center** window, click **Macro Settings** in the left panel.
6. Click the **Enable all macros** radio button to select it.
7. Click the **Trust access to the VBA project object model** checkbox.
8. Then click the **OK** button on the **Trust Center** window.



9. On the **Excel Options** window, click the **OK** button.



Now Excel 2007 should work well with SAP and BW.