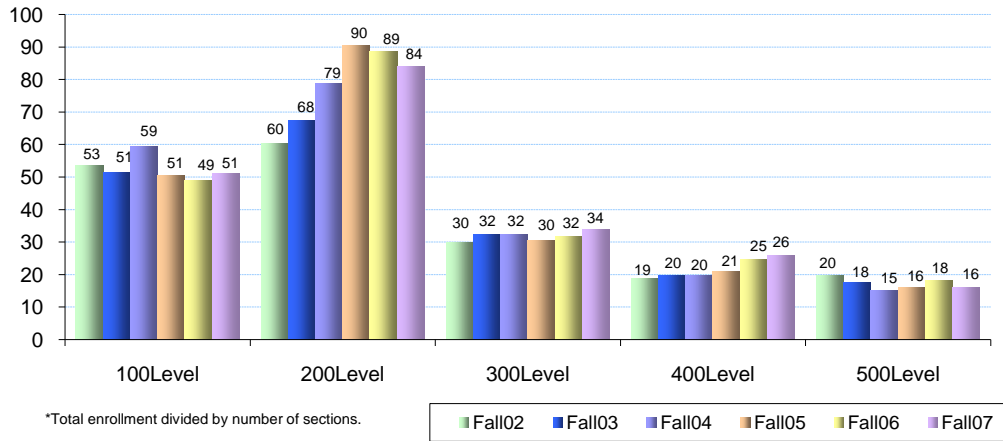


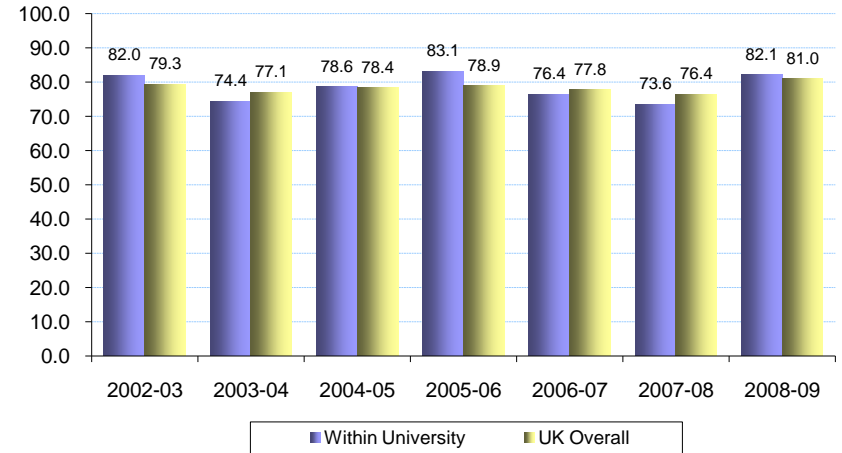
## COLLEGE OF AGRICULTURE SUMMARY

MAJORS						ANNUAL DEGREES AWARDED					FACULTY			RATIOS
Fall Semester	B	M/S	D	1st Prof	Total	B	M/S	D	1st Prof	Total	Full Time Faculty	African American	Departed Faculty	FTE S:F
2008-09	2,130	207	178	0	2,515	Not Yet Available					266	8	Not	12.3
2007-08	2,096	219	175	0	2,490	547	58	19	0	624	263	7	Yet	11.9
2006-07	2,129	219	161	0	2,509	489	77	33	0	599	261	7	Available	11.9
2005-06	1,985	217	167	0	2,369	442	57	22	0	521	257	8		11.3
2004-05	1,801	251	169	0	2,221	394	84	30	0	508	264	10		10.9
2003-04	1,913	256	168	0	2,337	418	69	33	0	520	274	9		10.7
2002-03	1,155	184	155	0	1,494	213	60	16	0	289	248	4		9.8

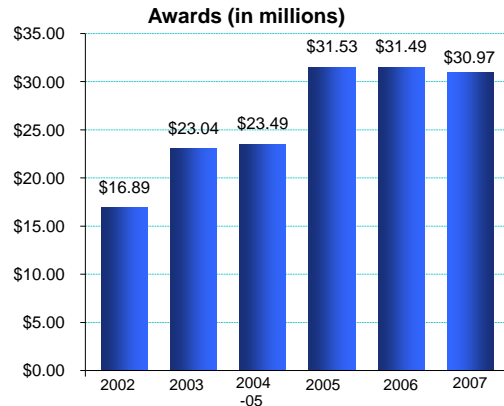
**Undergraduate Student Experience:  
Total College Average Class Size\* by Level**



**Undergraduate 1st to 2nd Year Retention**



SPONSORED PROJECTS		
Academic Year	Proposals Submitted	Awards Total
2007-08	337	\$30.97
2006-07	340	\$31.49
2005-06	347	\$31.53
2004-05	296	\$23.49
2003-04	315	\$23.04
2002-03	240	\$16.89



GENERAL FUND BUDGET					PRIVATE GIVING	
Academic Year	Total Amount	% Increase	State / Tuition Base	% Increase	Number Donors	Annual Giving
2008-09	\$104,135,759	0.3%	\$80,720,759	-1.7%		
2007-08	\$103,846,900	5.0%	\$82,153,671	4.2%	4,215	\$4,207,395
2006-07	\$98,879,500	4.7%	\$78,843,538	4.6%	4,506	\$5,085,954
2005-06	\$94,399,800	5.3%	\$75,360,599	6.0%	3,596	\$11,245,447
2004-05	\$89,654,200	2.6%	\$71,065,977	0.8%		\$5,388,438
2003-04	\$87,353,200		\$70,535,891			\$5,020,002