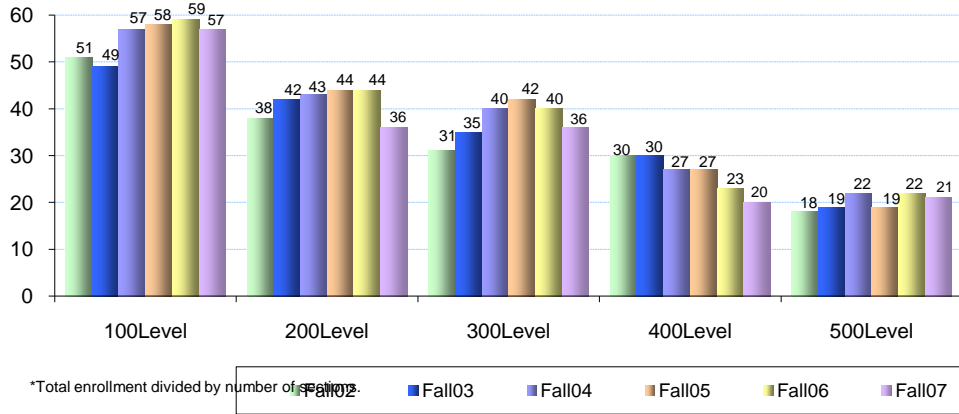


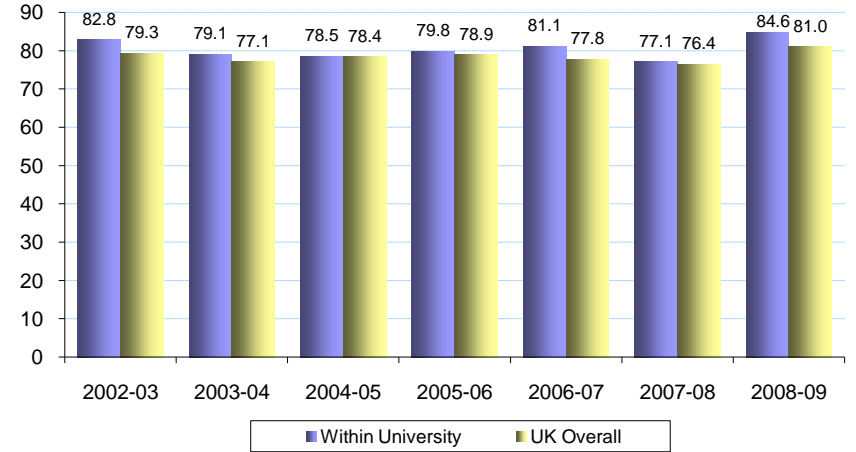
COLLEGE OF ARTS AND SCIENCES SUMMARY

MAJORS						ANNUAL DEGREES AWARDED					FACULTY			RATIOS
Fall Semester	B	M/S	D	1st Prof	Total	B	M/S	D	1st Prof	Total	Full Time Faculty	African American	Departed Faculty	FTE S:F
2008-09	4,840	213	721	0	5,774	Not Yet Available					374	14	Not	13.9
2007-08	4,839	237	708	0	5,784	1,098	128	74	0	1,300	385	14	Yet	12.9
2006-07	4,938	252	725	0	5,915	1007	135	82	0	1,224	357	16	Available	14.2
2005-06	4,338	246	717	0	5,301	1,028	133	71	0	1,232	348	18		12.5
2004-05	3,953	254	707	0	4,914	888	119	82	0	1,089	366	18		11.2
2003-04	3,767	276	690	0	4,733	837	134	95	0	1,066	383	16		10.0
2002-03	3,449	277	688	0	4,414	825	133	68	0	1,026	377	14		9.4

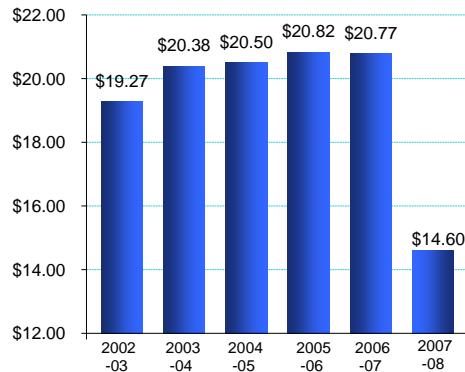
**Undergraduate Student Experience:
Total College Average Class Size* by Level**



Undergraduate 1st to 2nd Year Retention



Awards (in millions)



SPONSORED PROJECTS

Academic Year	Proposals Submitted	Awards Total
2007-08	223	\$14.60
2006-07	223	\$20.77
2005-06	242	\$20.82
2004-05	258	\$20.50
2003-04	259	\$20.38
2002-03	273	\$19.27

GENERAL FUND BUDGET

Academic Year	Total Amount	% Increase	State / Tuition Base	% Increase	Number Donors	Annual Giving
2008-09	\$53,555,831	0.6%	\$52,034,531	0.9%		
2007-08	\$53,225,700	9.8%	\$51,588,447	10.2%	2,525	\$1,459,599
2006-07	\$48,467,900	4.0%	\$46,829,287	3.3%	2,188	\$1,650,133
2005-06	\$46,611,600	4.9%	\$45,328,659	4.8%	2,413	\$1,238,393
2004-05	\$44,434,400	2.7%	\$43,271,286	2.7%		\$1,277,789
2003-04	\$43,247,300		\$42,120,649			\$1,297,445