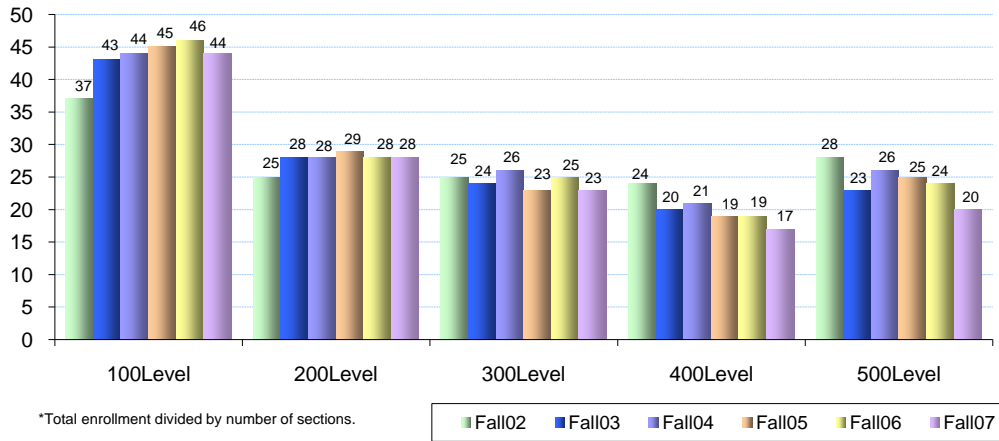


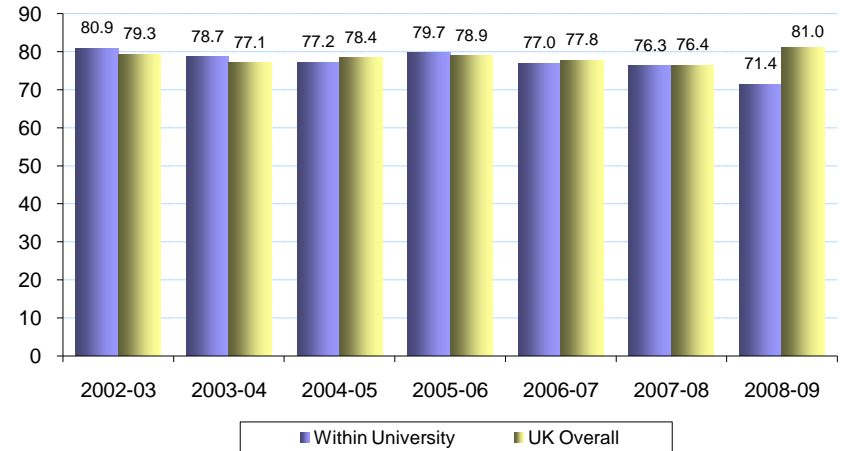
## COLLEGE OF COMMUNICATIONS AND INFORMATION STUDIES SUMMARY

MAJORS						ANNUAL DEGREES AWARDED					FACULTY			RATIOS
Fall Semester	B	M/S	D	1st Prof	Total	B	M/S	D	1st Prof	Total	Full Time Faculty	African American	Departed Faculty	FTE S:F
2008-09	1,190	223	39	0	1,452	Not Yet Available					50	3	Not	23.9
2007-08	1,282	235	30	0	1,547	385	103	3	0	491	47	2	Yet	24.8
2006-07	1,390	257	41	0	1,688	371	110	9	0	490	42	2	Available	29.4
2005-06	1,404	266	39	0	1,709	382	118	8	0	508	42	3		30.8
2004-05	1,350	270	37	0	1,657	331	112	8	0	451	42	3		28.5
2003-04	1,319	261	55	0	1,635	335	102	7	0	444	40	2		27.8
2002-03	1,261	229	63	0	1,553	331	76	13	0	420	37	2		26.8

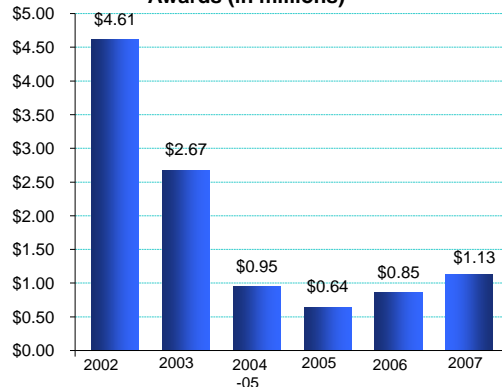
**Undergraduate Student Experience:  
Total College Average Class Size\* by Level**



**Undergraduate 1st to 2nd Year Retention**



**Awards (in millions)**



### SPONSORED PROJECTS

Academic Year	Proposals Submitted	Awards Total
2007-08	18	\$1.13
2006-07	10	\$0.85
2005-06	11	\$0.64
2004-05	15	\$0.95
2003-04	17	\$2.67
2002-03	23	\$4.61

### GENERAL FUND BUDGET

Academic Year	Total Amount	% Increase	PRIVATE GIVING			
			State / Tuition Base	% Increase		
Number Donors	Annual Giving					
2008-09	\$6,560,895	5.2%	\$6,373,395	5.1%		
2007-08	\$6,236,300	14.3%	\$6,062,829	14.7%	982	\$463,948
2006-07	\$5,455,400	7.0%	\$5,284,327	5.5%	835	\$326,370
2005-06	\$5,099,000	5.3%	\$5,007,867	4.9%	891	\$333,118
2004-05	\$4,844,000	1.7%	\$4,774,224	1.1%		\$237,825
2003-04	\$4,762,800		\$4,720,173			\$171,972