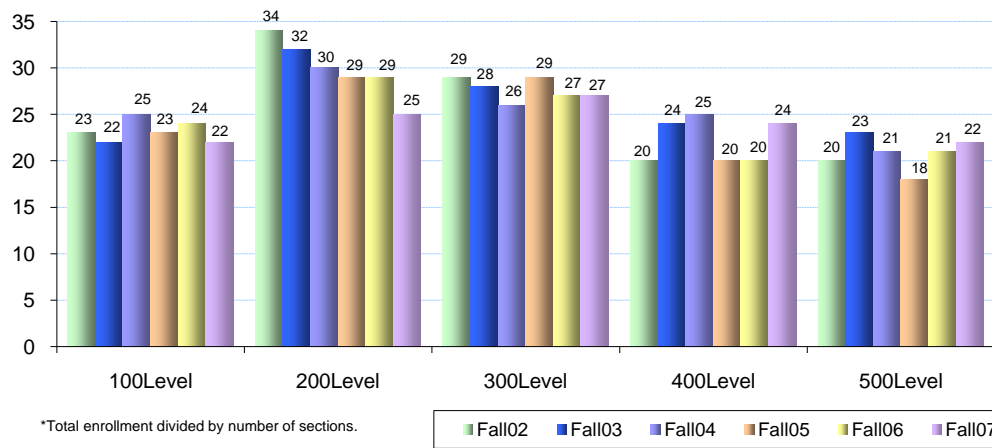


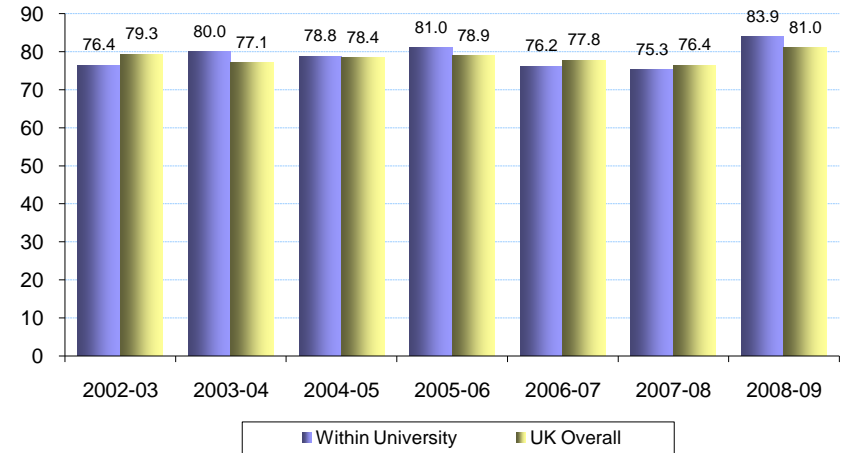
COLLEGE OF EDUCATION SUMMARY

MAJORS						ANNUAL DEGREES AWARDED					FACULTY			RATIOS
Fall Semester	B	M/S	D	1st Prof	Total	B	M/S	D	1st Prof	Total	Full Time Faculty	African American	Departed Faculty	FTE S:F
2008-09	1,527	409	309	0	2,245	Not Yet Available					90	13	Not	20.1
2007-08	1,485	407	306	0	2,198	308	222	34	0	564	95	12	Yet	19.0
2006-07	1,657	492	307	0	2,456	325	243	30	0	598	92	12	Available	20.6
2005-06	1,701	455	283	0	2,439	328	263	31	0	622	88	11		21.4
2004-05	1,644	497	322	0	2,463	318	284	45	0	647	89	10		21.2
2003-04	1,589	509	340	0	2,438	297	242	30	0	569	87	9		21.7
2002-03	1,498	503	369	0	2,370	242	224	30	0	496	87	10		20.9

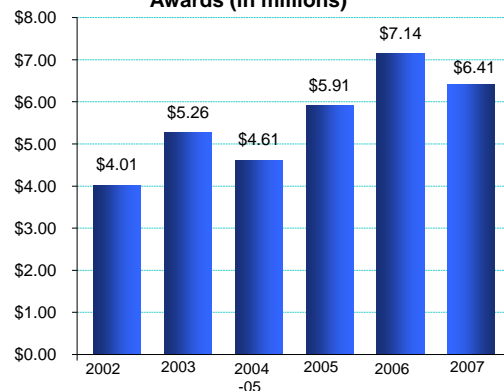
**Undergraduate Student Experience:
Total College Average Class Size* by Level**



Undergraduate 1st to 2nd Year Retention



Awards (in millions)



SPONSORED PROJECTS

Academic Year	Proposals Submitted	Awards Total
2007-08	70	\$6.41
2006-07	40	\$7.14
2005-06	66	\$5.91
2004-05	78	\$4.61
2003-04	64	\$5.26
2002-03	43	\$4.01

GENERAL FUND BUDGET

Academic Year	Total Amount	% Increase	State / Tuition Base	% Increase	Number Donors	Annual Giving
2008-09	\$16,037,110	-1.3%	\$14,171,910	-2.9%		
2007-08	\$16,254,700	13.7%	\$14,594,850	5.6%	1,572	\$271,627
2006-07	\$14,293,900	3.4%	\$13,815,612	3.3%	1,445	\$220,386
2005-06	\$13,828,100	10.6%	\$13,369,181	9.0%	1,587	\$184,096
2004-05	\$12,507,000	2.7%	\$12,270,871	2.4%		\$410,015
2003-04	\$12,178,100		\$11,980,990			\$275,650

PRIVATE GIVING

Number Donors	Annual Giving
1,572	\$271,627
1,445	\$220,386
1,587	\$184,096
	\$410,015
	\$275,650