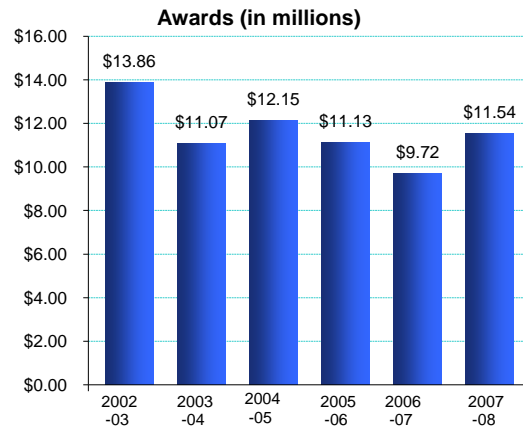
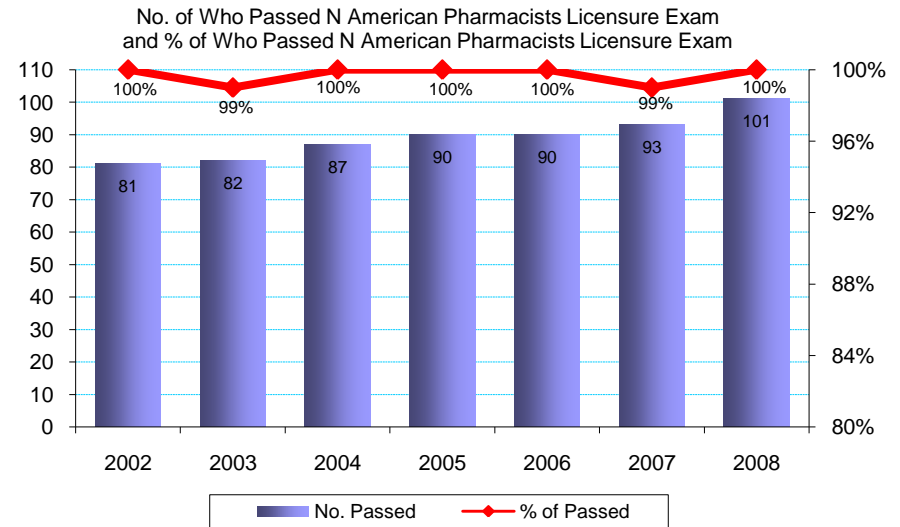
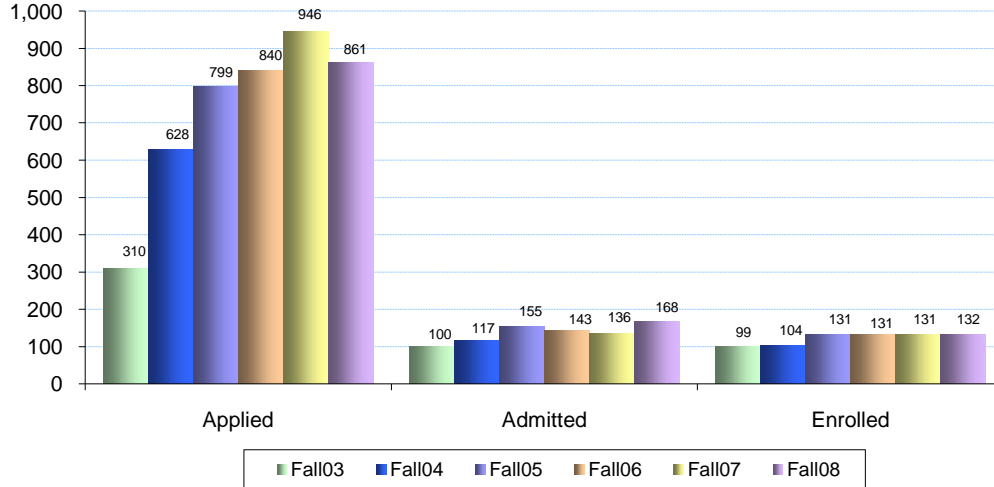


## COLLEGE OF PHARMACY SUMMARY

MAJORS						ANNUAL DEGREES AWARDED					FACULTY			RATIOS
Fall Semester	B	M/S	D	1st Prof	Total	B	M/S	D	1st Prof	Total	Full Time Faculty	African American	Departed Faculty	FTE S:F
2008-09	0	0	77	512	589	Not Yet Available					60	2	Not	NA
2007-08	0	0	68	490	558	0	1	6	103	110	58	2	Yet	NA
2006-07	0	1	69	458	528	0	1	12	96	109	62	2	Available	NA
2005-06	0	2	64	425	491	0	4	6	97	107	62	1		NA
2004-05	0	0	56	395	451	0	3	4	110	117	58	1		NA
2003-04	0	0	54	411	465	0	2	6	110	118	50	1		NA
2002-03	0	0	53	419	472	0	0	6	97	103	50	1		NA

**Applications, Admissions and Enrollment**  
(Based on applicant file data as submitted to CPE)



SPONSORED PROJECTS		
Academic Year	Proposals Submitted	Awards Total
2007-08	97	\$11.54
2006-07	114	\$9.72
2005-06	148	\$11.13
2004-05	132	\$12.15
2003-04	116	\$11.07
2002-03	111	\$13.86

GENERAL FUND BUDGET					PRIVATE GIVING	
Academic Year	Total Amount	% Increase	State / Tuition Base	% Increase	Number Donors	Annual Giving
2008-09	\$19,188,562	2.6%	\$13,640,062	3.5%		
2007-08	\$18,706,800	8.7%	\$13,178,321	7.7%	1,006	\$1,494,470
2006-07	\$17,202,200	1.9%	\$12,234,660	7.2%	973	\$1,121,433
2005-06	\$16,876,400	21.4%	\$11,409,572	19.1%	944	\$1,306,746
2004-05	\$13,906,100	26.2%	\$9,581,875	6.8%		\$569,758
2003-04	\$11,016,500		\$8,968,021			\$677,656