

Products

- Data searches by county, coordinate range, 7.5-minute quadrangle, coal bed, or type of information
- Printouts of data (borehole data can be provided in text format or as graphic strip logs)
- Data copied onto magnetic media (3.5-inch diskette or 8-mm tape)
- Translucent overlays showing locations of data
- Assistance with public service requests for coal data

Ordering Information

Coal data are available from the Office of Geologic Information. For further information, contact:

Bart Davidson
 Manager, Office of Geologic Information
 Kentucky Geological Survey
 228 Mining and Mineral Resources Bldg.
 University of Kentucky
 Lexington, KY 40506-0107

Phone: (859) 257-5500
 Fax: (859) 257-1147

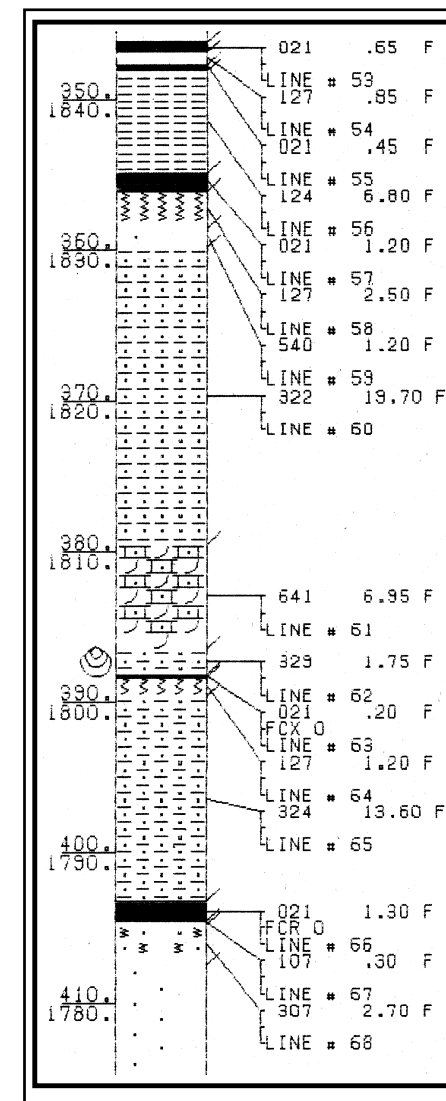
E-mail: bdavidson@kgs.mm.uky.edu

World Wide Web:
www.uky.edu/KGS

Fee Schedule	
Product	Cost*
KCRIS Thickness and Quality Data	
Setup fee	\$10.00
One-line thickness printouts	+ \$0.05 per record
One-line full-quality printouts	+ \$0.50 per record
3.5-inch diskette and 8-mm tape	Set-up \$20.00 + \$0.05 per record
Overlay maps	\$40.00 per quadrangle
Borehole Data	
Catalog search	Free
Header and lithology printouts	\$2.00 per log
Index map	\$40.00 per quadrangle
Graphic strip logs	\$5.00 per log
3.5-inch diskette and 8-mm tape	Set-up \$20.00 + \$5.00 per record
Plotted GIS Maps	
From available coverages	\$10.00 per map
Custom-designed	\$40.00 per map
CD-ROM of coal-bed outcrops	\$40.00

*Does not include any applicable sales tax or shipping charges.

Coal Information at the Kentucky Geological Survey



Kentucky Coal Data

The Coal and Minerals Section at the Kentucky Geological Survey (KGS) maintains various coal data in paper and electronic formats. These data are used by the public, government agencies, and the coal industry.

Kentucky Coal Resources Information System

The Kentucky Coal Resources Information System (KCRIS) contains two major data sets. The first consists of coal thickness measurements and descriptions from natural outcrops, roadcuts, and mine exposures. Elevations of coal beds were determined mostly by altimetry. Correlations of coal beds were determined by the KGS and the U.S. Geological Survey. This data set is currently limited to the Eastern Kentucky Coal Field.

The second major data set in KCRIS consists of coal-quality analyses from samples taken from mines, natural outcrops, and cores. All sampling and analysis was performed by the KGS, the University of Kentucky Center for Applied Energy Research, or the U.S. Geological Survey. These data are available for both the Eastern and Western Kentucky Coal Fields.

Borehole Database

Unlike KCRIS, which contains data on discrete beds at a given location, this database contains borehole records of continuous core and rotary holes drilled for coal exploration and development. Records were obtained from industry and government sources in both coal fields.

Other Information

Also available are coal resource estimates for 7.5-minute quadrangles, estimates of coal available for mining in selected 7.5-minute quadrangles, stratigraphic correlations between coal districts, and locations of paleontologic information in both coal fields.

Who Can Benefit from KGS Coal Data?

- Academic institutions
- Coal companies
- Coal consultants
- Engineers
- Environmental geologists and engineers
- General public
- Geologists and hydrologists
- Land-use planners
- Regulatory agencies
- Research organizations
- State and local government agencies
- Students
- Utility companies

Types of Data

- Coal-thickness data (more than 25,000 records)
 - Coal name
 - Location
 - Elevation
 - Coal and parting thickness
- Coal-quality data
 - Coal name
 - Location
 - Proximate analysis (more than 2,000 records)
 - Ultimate analysis (more than 1,500 records)
 - Trace-element chemistry (more than 700 records)
 - Petrography
 - Palynology
- Borehole data (more than 7,700 records)
 - Location
 - Hole identification
 - Surface elevation
 - Depth
 - Lithologic descriptions and thicknesses
- Miscellaneous open-file reports