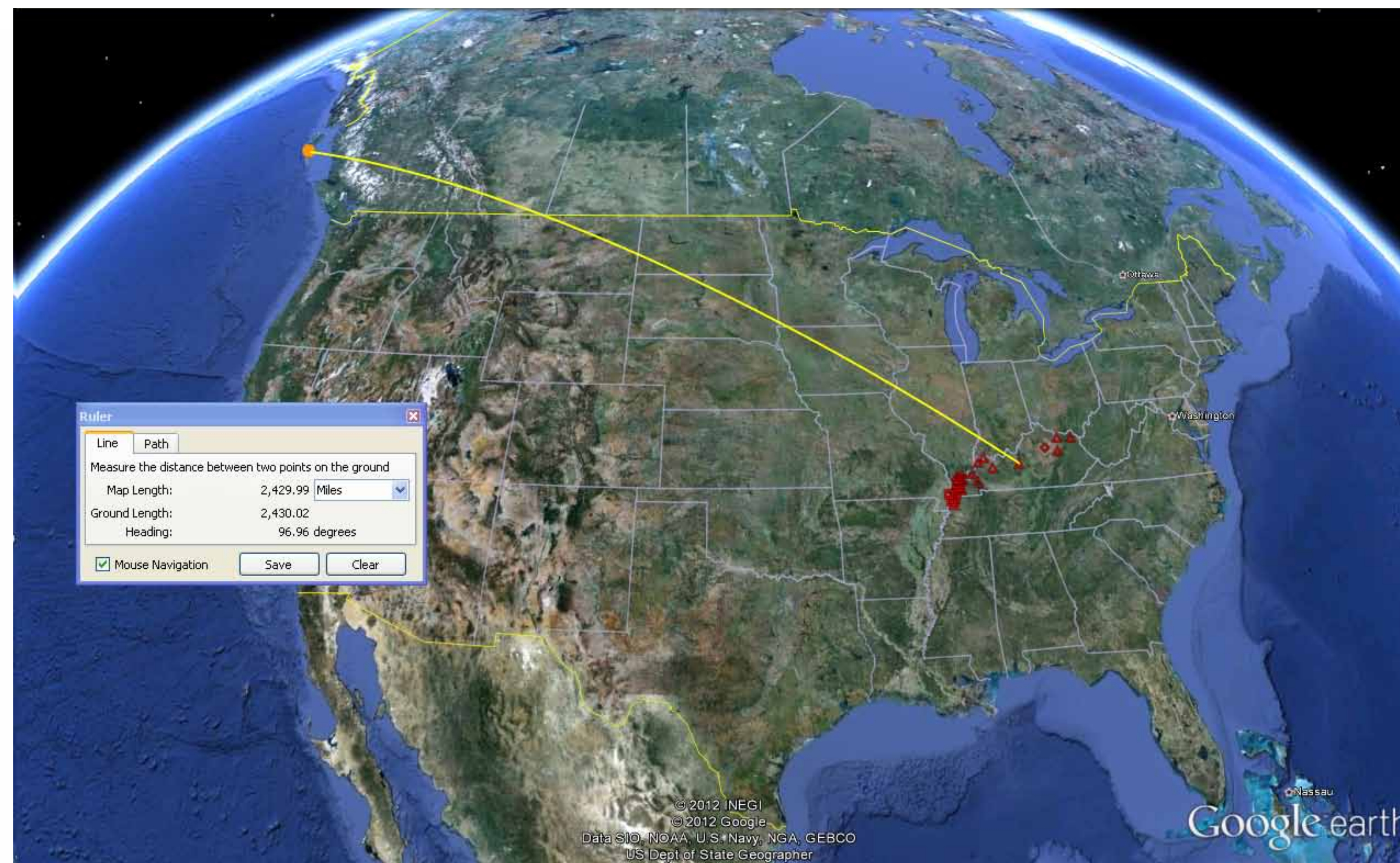
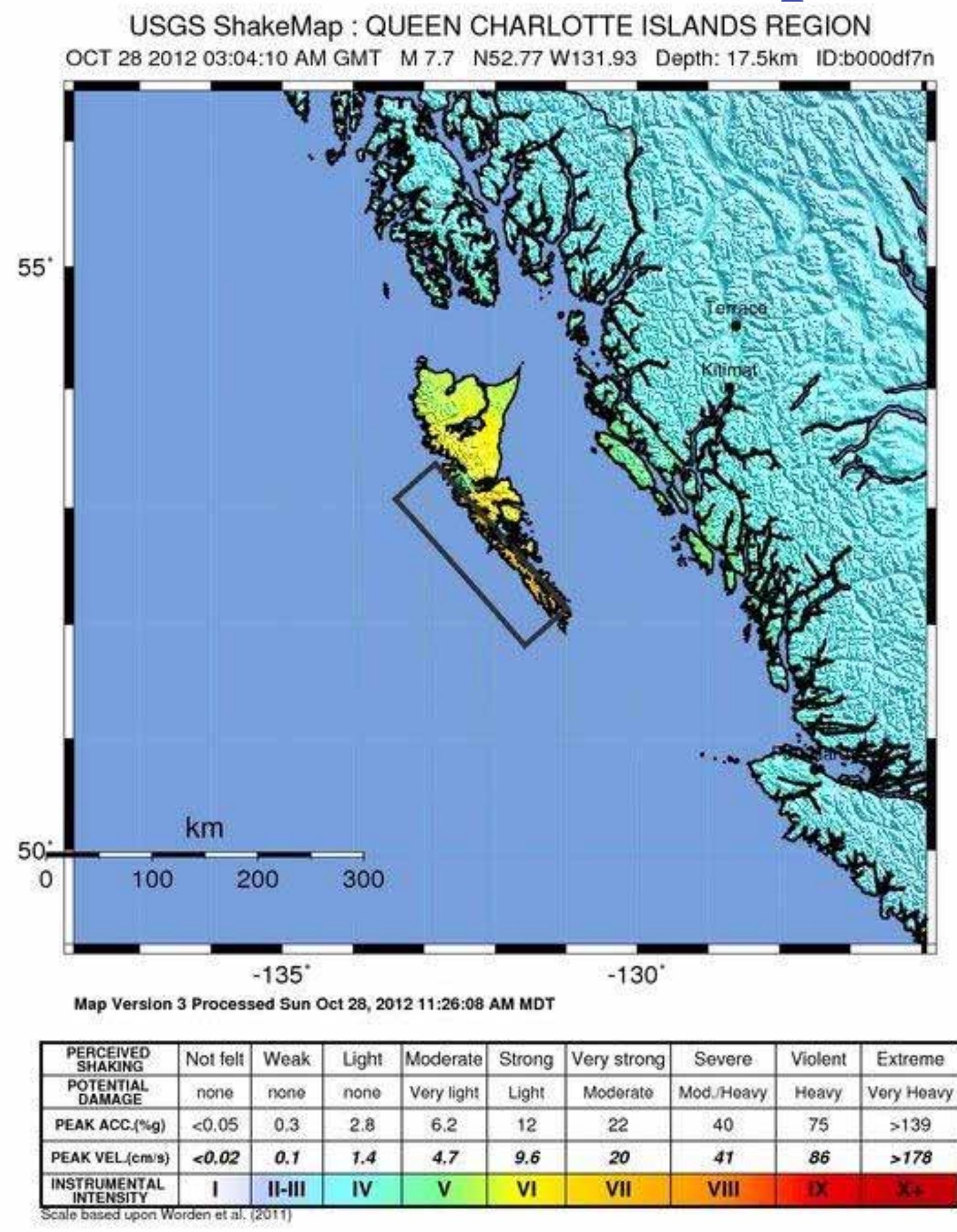


October 28, 2012 Queen Charlotte Islands Earthquake M 7.7

10/28/2012 03:04:10 UTC | 10/27/2012 23:04:10 EDT
 University of Kentucky – Kentucky Geological Survey
 Kentucky Seismic and Strong-Motion Network

USGS Shake Map



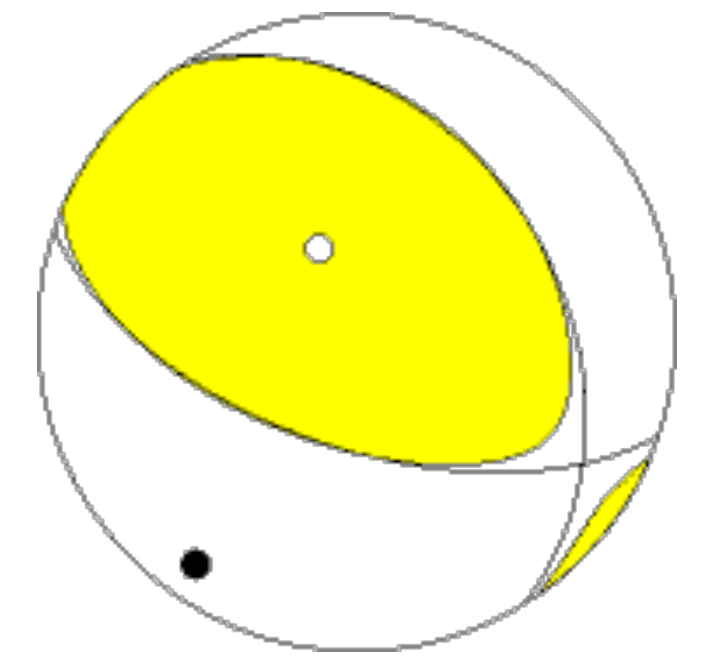
USGS Focal Mechanism

12/10/28 03:04:09.47
 Epicenter: 52.776 -131.926
 MW 7.7

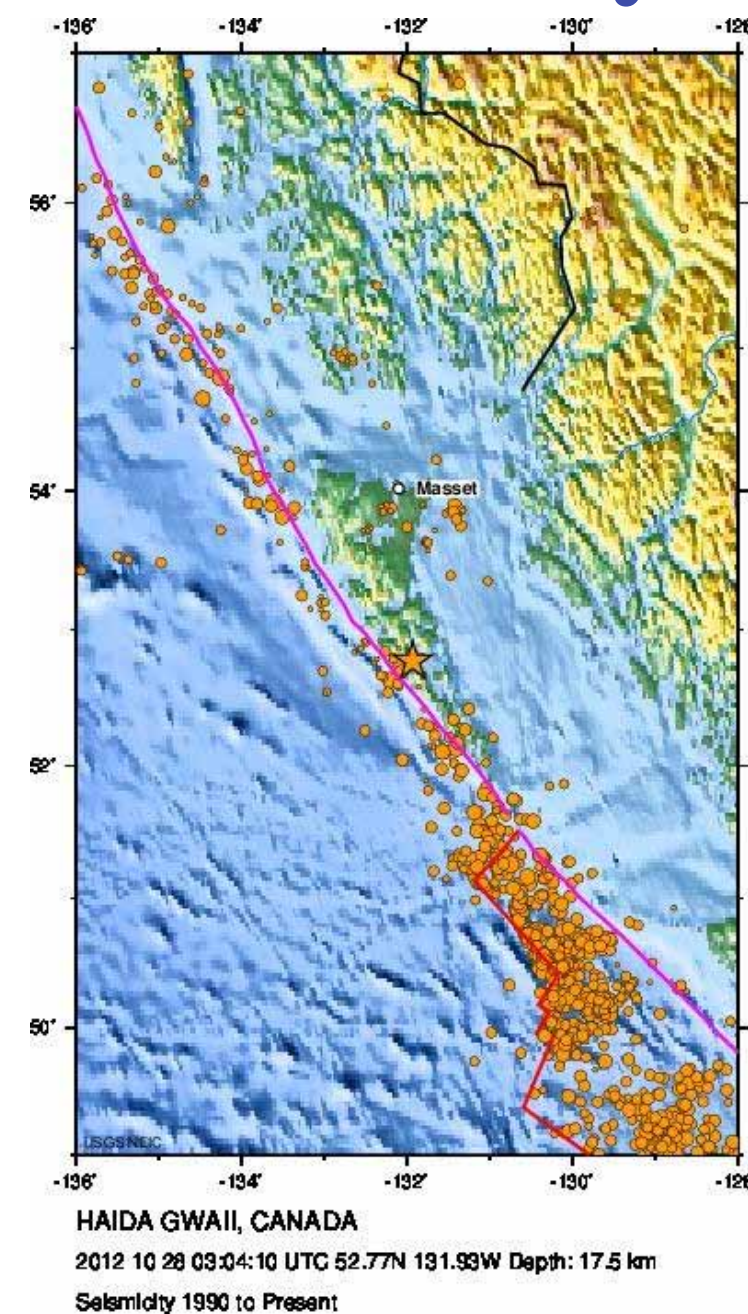
USGS CENTROID MOMENT TENSOR
 12/10/28 03:04:53.40
 Centroid: 52.969 -131.926
 Depth 10 No. of sta: 83
 Moment Tensor: Scale 10**20 Nm
 Mr= 3.90 Mt=-2.42
 Mpp=-1.49 Mrt= 2.51
 Mrp= 0.22 Mtp= 2.28

Principal axes:
 T Val= 4.94 Plg=67 Azm=336
 N -0.24 19 120
 P -4.69 13 215

Best Double Couple:Mo=4.8*10**20
 NP1:Strike=109 Dip=60 Slip= 68
 NP2: 329 36 124



Historical Seismicity since 1990



KSSMN Seismograms (ordered by distance)

