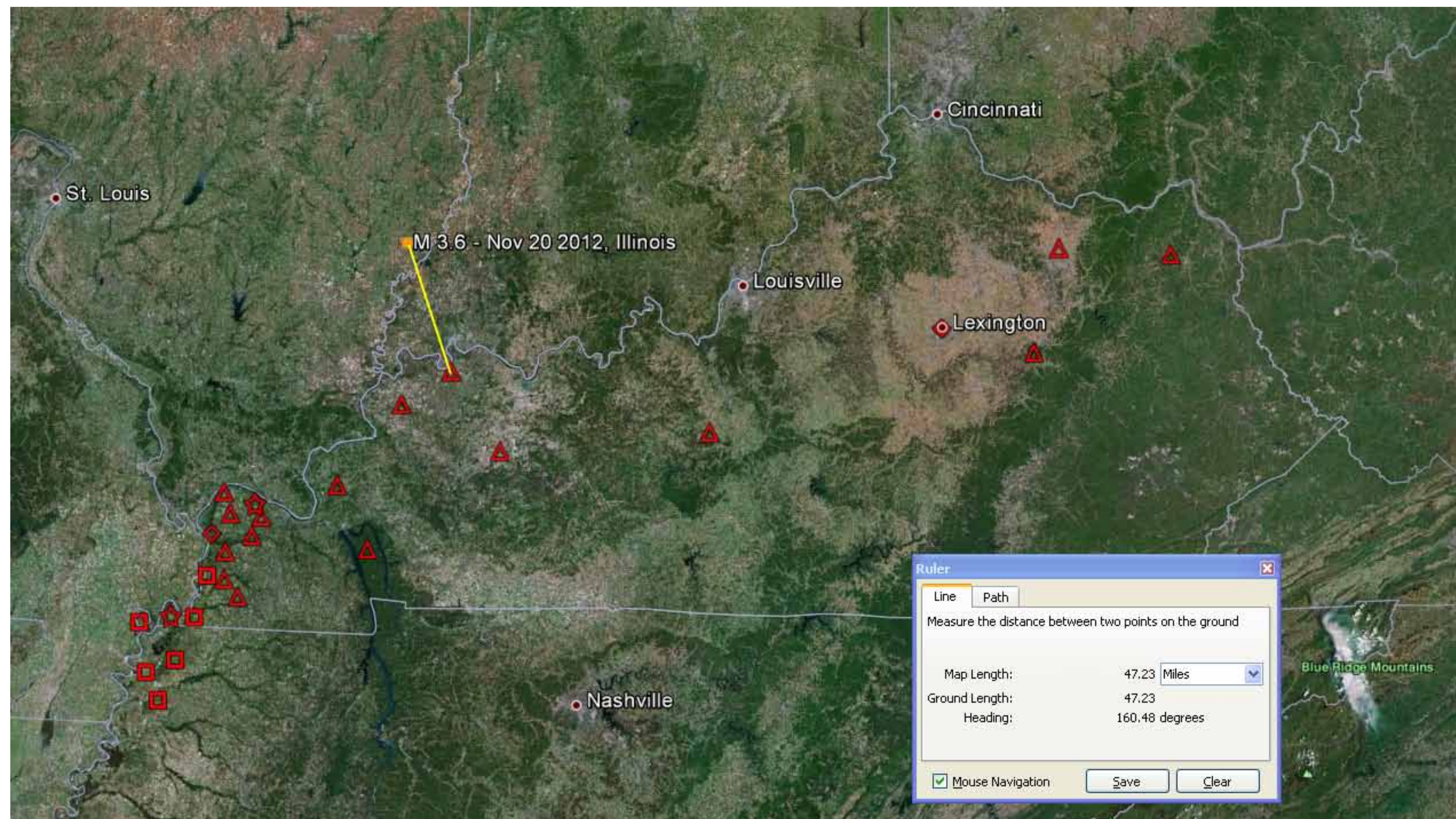
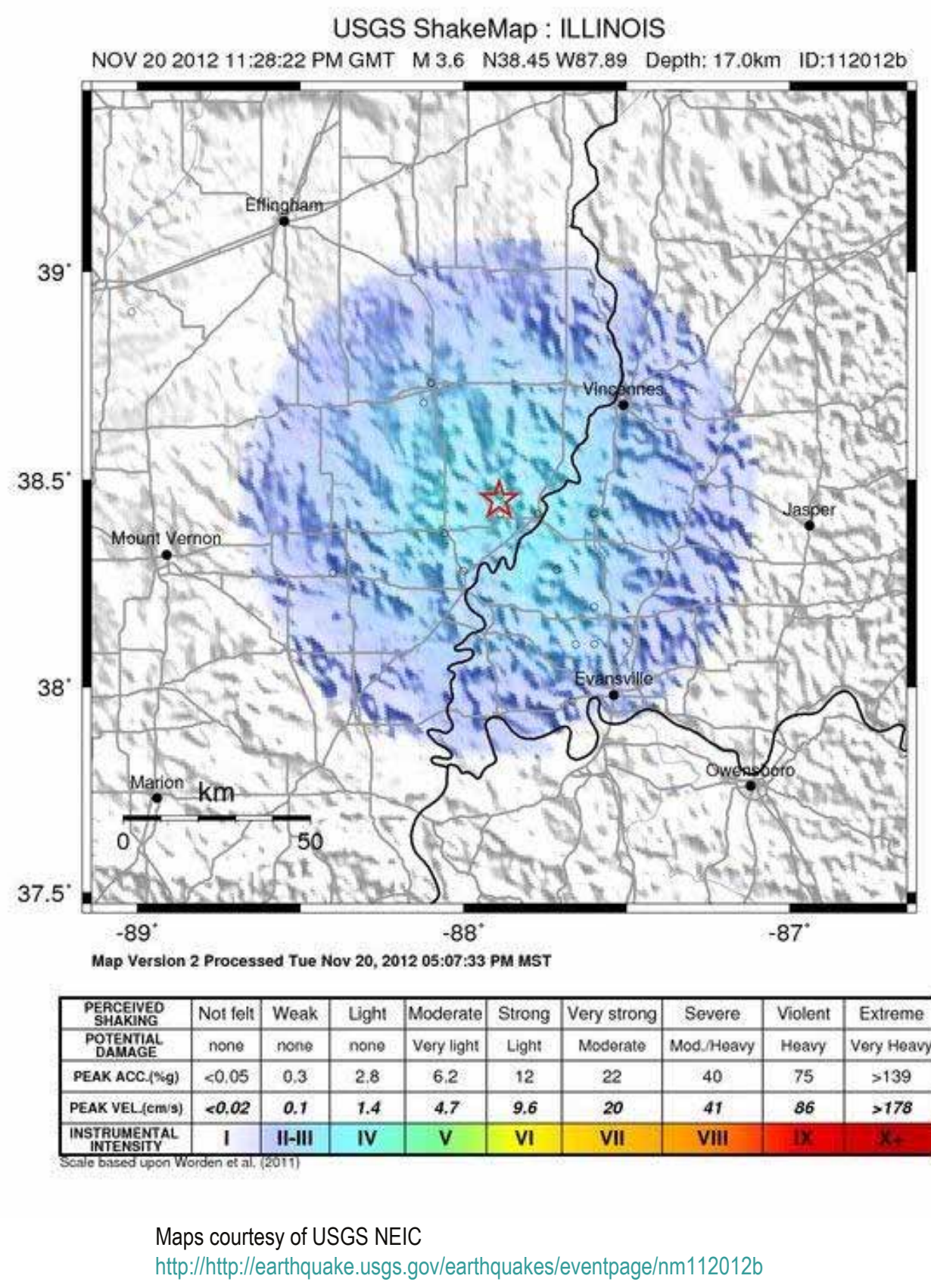


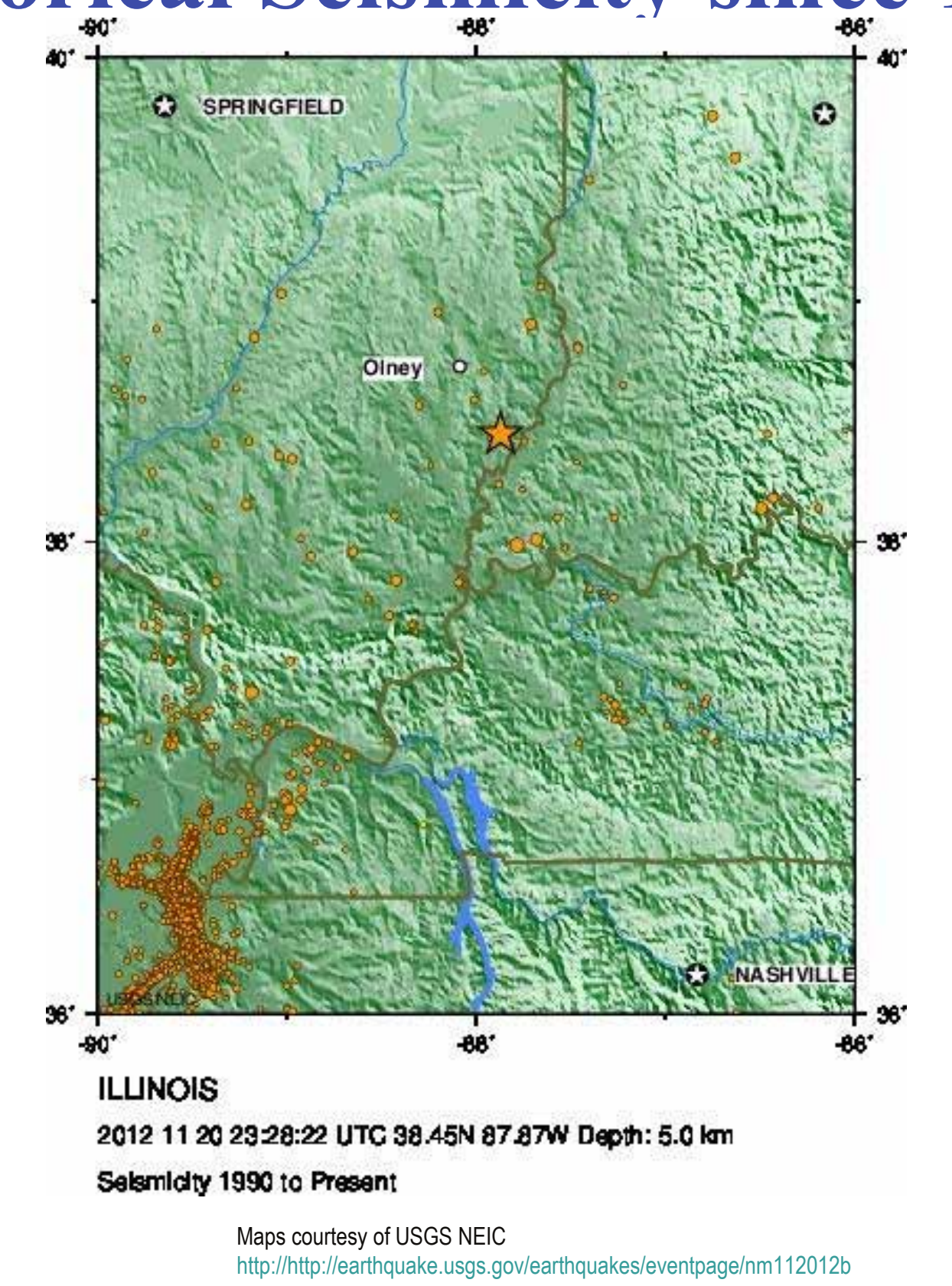
November 20, 2012 Mount Carmel, Illinois Earthquake M 3.6

11/20/2012 23:28:22 UTC | 11/20/2012 18:28:22 EDT
 University of Kentucky – Kentucky Geological Survey
 Kentucky Seismic and Strong-Motion Network

USGS Shake Map



Historical Seismicity since 1990



KSSMN Seismograms (ordered by distance)

2012 1120 2328 22.0 I 38.452 -87.891 17.0 3.6b NM
 Plot start time: 2012 11 20 23:28 8.000

