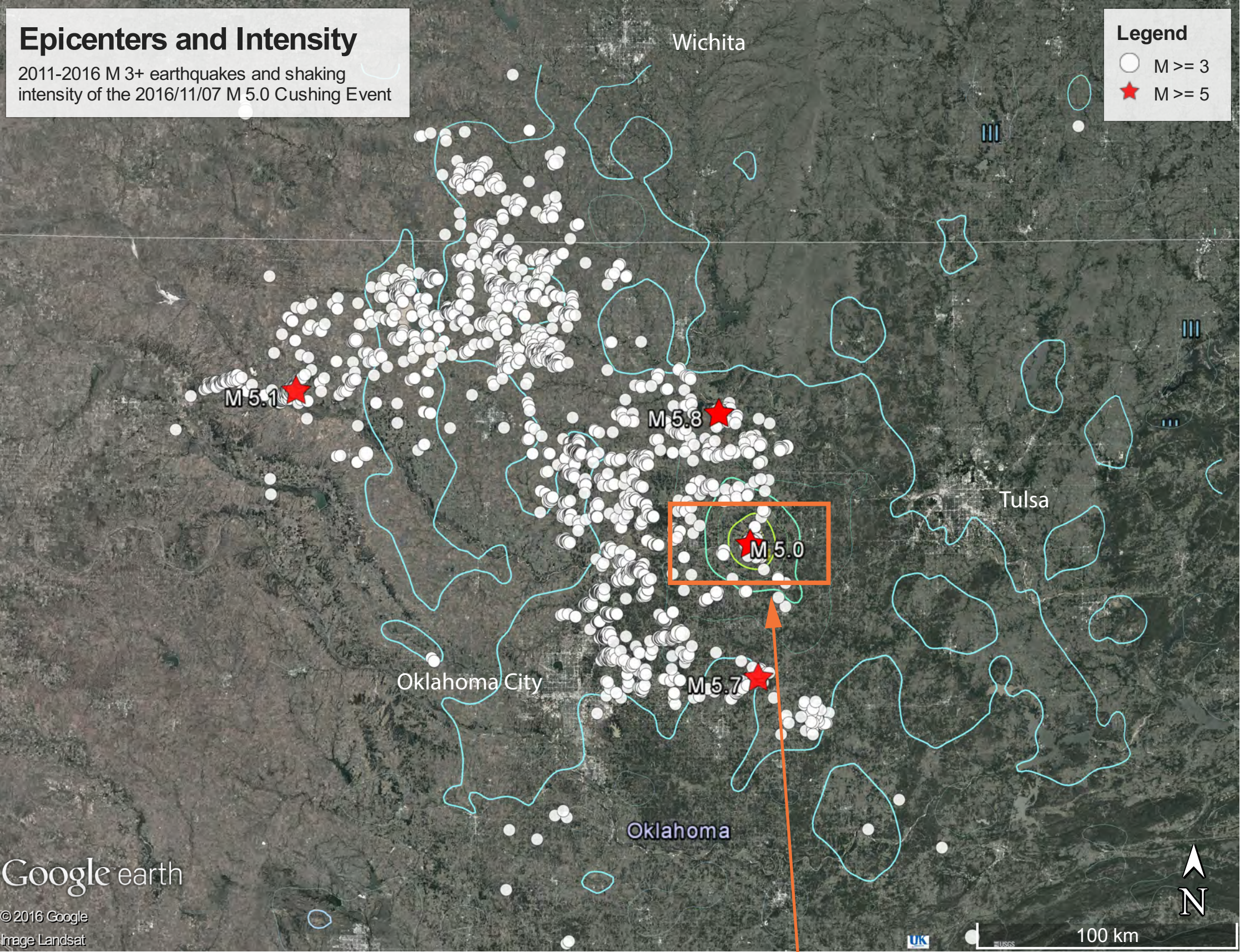
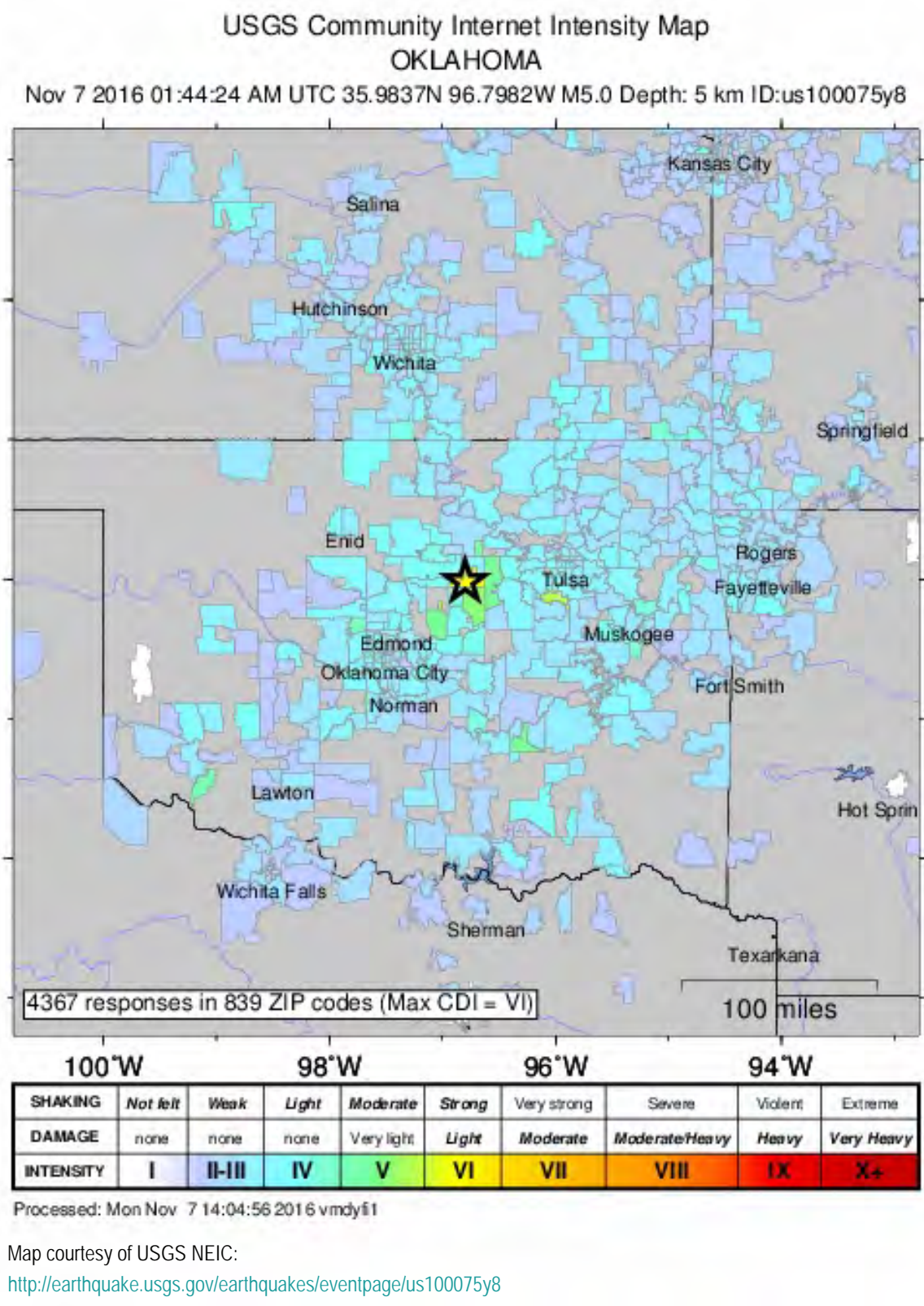
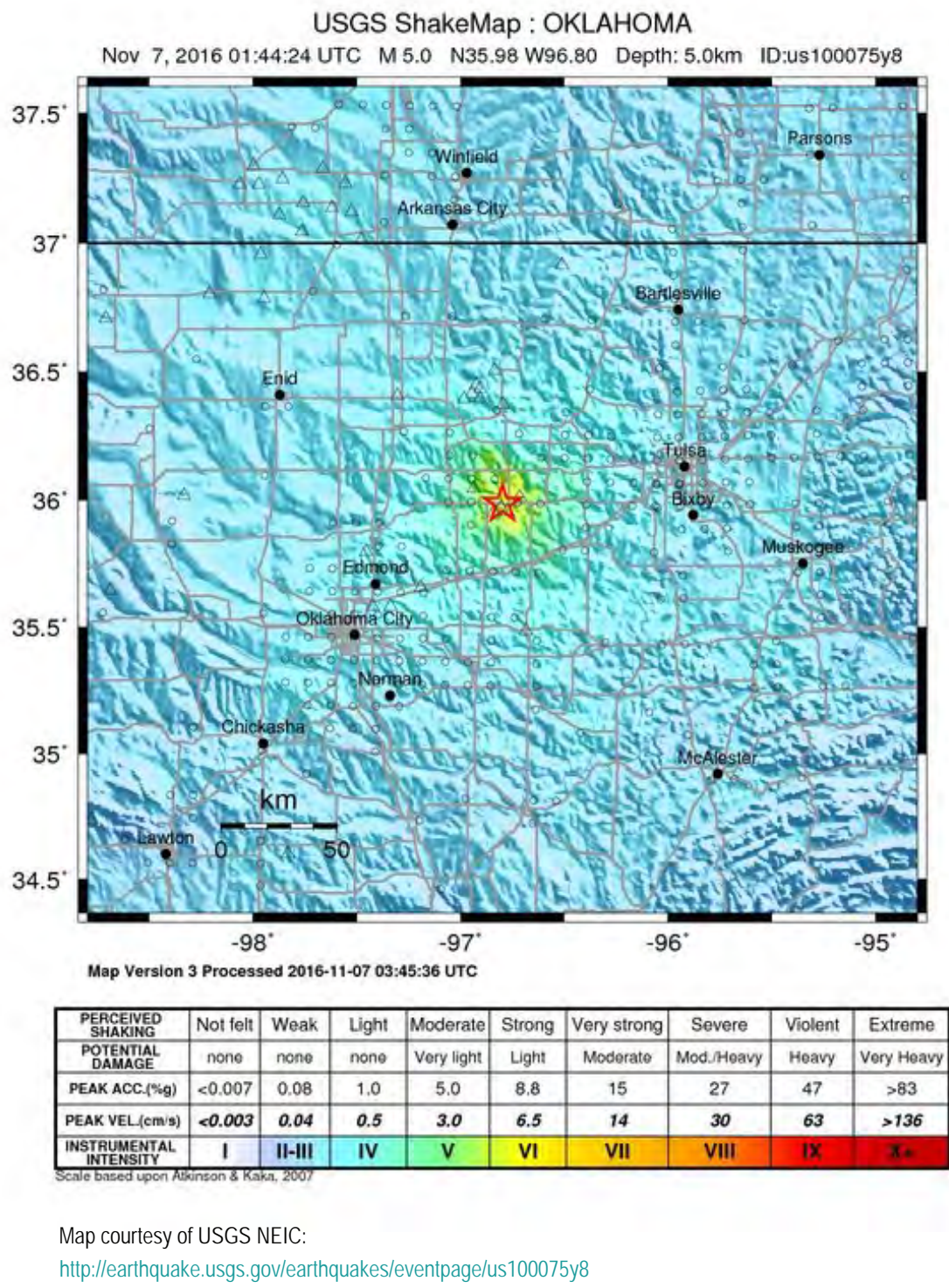


Nov. 7, 2016, Cushing, Ok., (M 5.0)  
01:44:24 UTC / 19:44:24 CST  
University of Kentucky  
Kentucky Seismic and Strong Motion Network

USGS Felt Reports

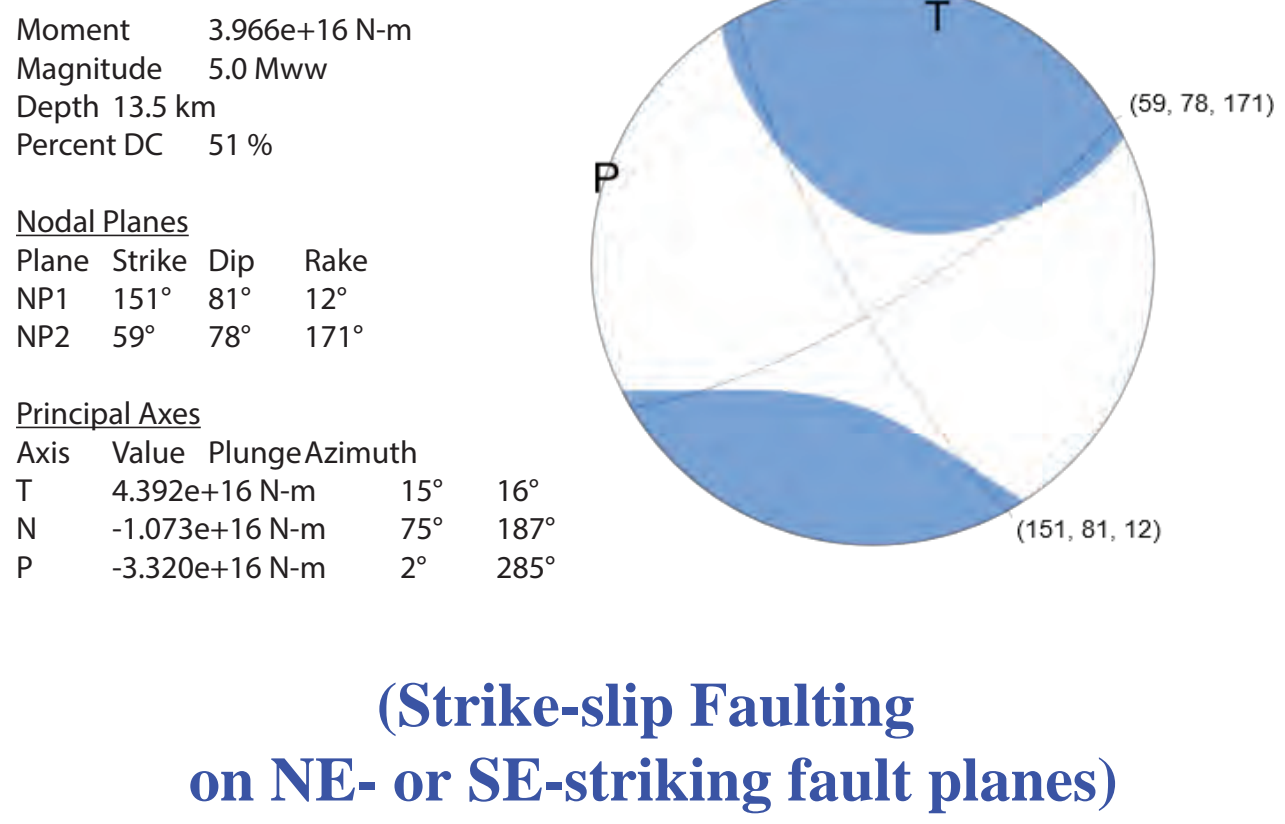


USGS Shake Map



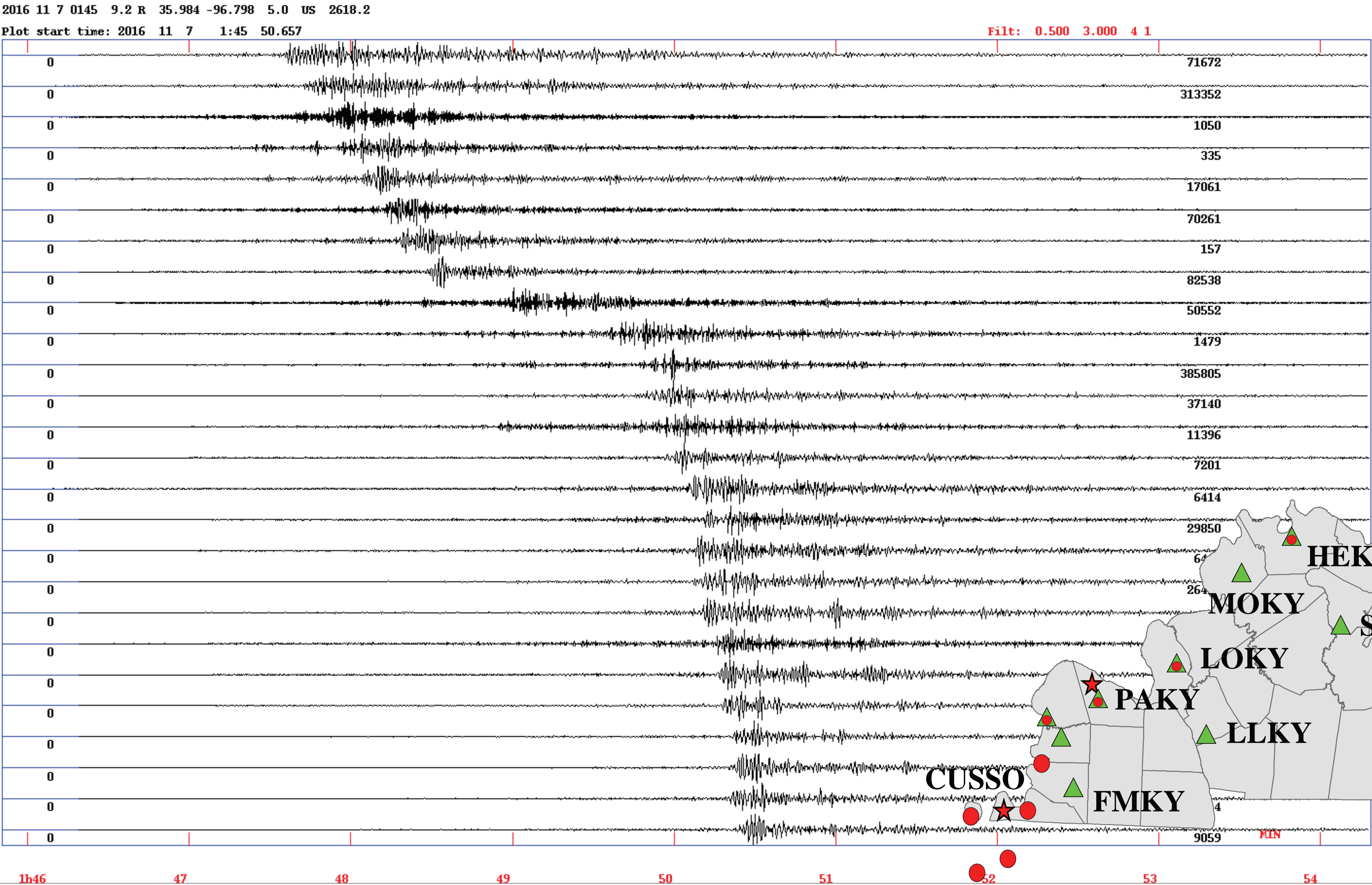
Top: Magnitude (M) 3.0 and greater earthquakes since Nov., 2011 in the vicinity of the 2016/11/07 Cushing earthquake. Isoseismal contours (lines of constant levels of shaking) surround the M 5.0 epicenter. Bottom: (Left) - Vertical (upper trace) and horizontal strong-motion waveforms recorded at OK031, 5 km from the epicenter. Peak acceleration of ~36% gravity was observed. (Middle) - Closer view of the epicenter region and the country's largest storage of crude oil, highlighted by a yellow box. Cushing is also a major pipeline hub. (Right) Location of the M 5.0 earthquake and the pipeline network.

USGS W-phase Source Mechanism



KSSMN Seismograms  
(ordered by distance)

CUSO  
FMKY  
PAKY  
LOKY  
LLKY  
MOKY  
HEKY  
SMKY  
SOKY  
BHKY  
ROKY  
EK20  
FLKY  
EK21  
EK32  
HZKY  
EK22  
EK33  
EK12  
PKKY  
EK25  
EK13  
EK34  
EK35  
EK14  
EK26



KSSMN Seismic Stations

