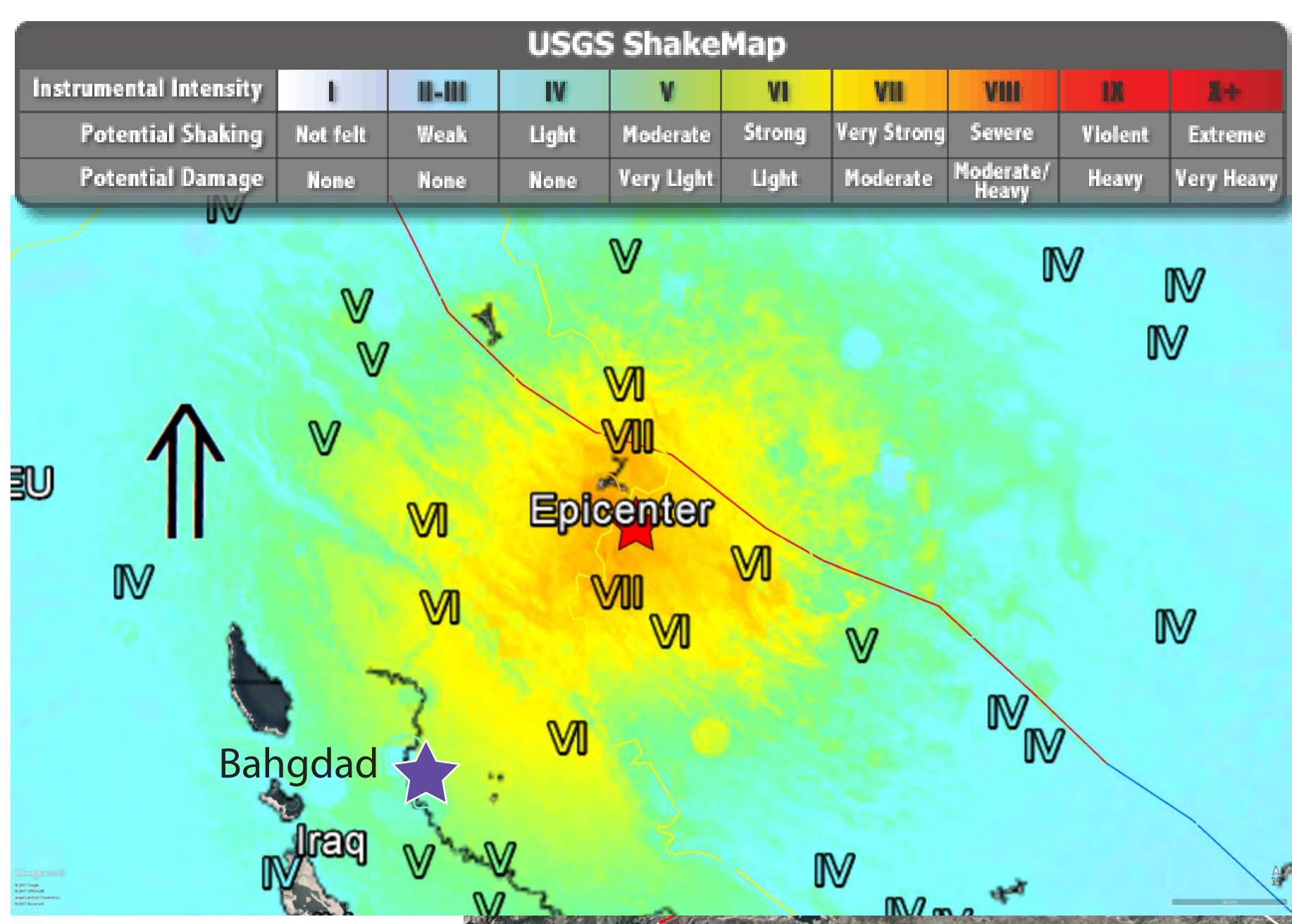


November 12, 2017 Halabjah, Iraq (M 7.3)

18:18:17 UTC / 12:18:17 at epicenter

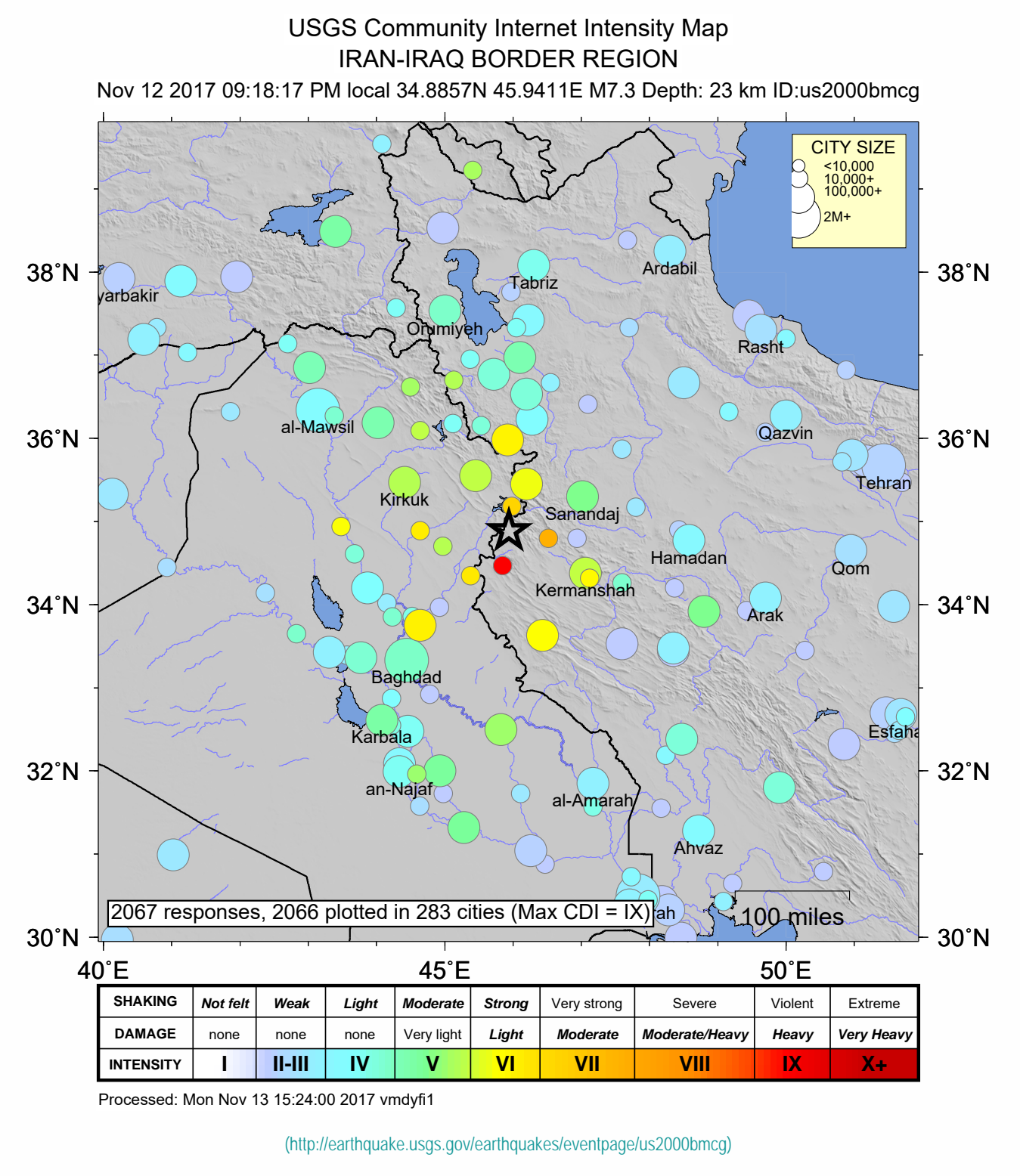
University of Kentucky

Kentucky Seismic and Strong Motion Network

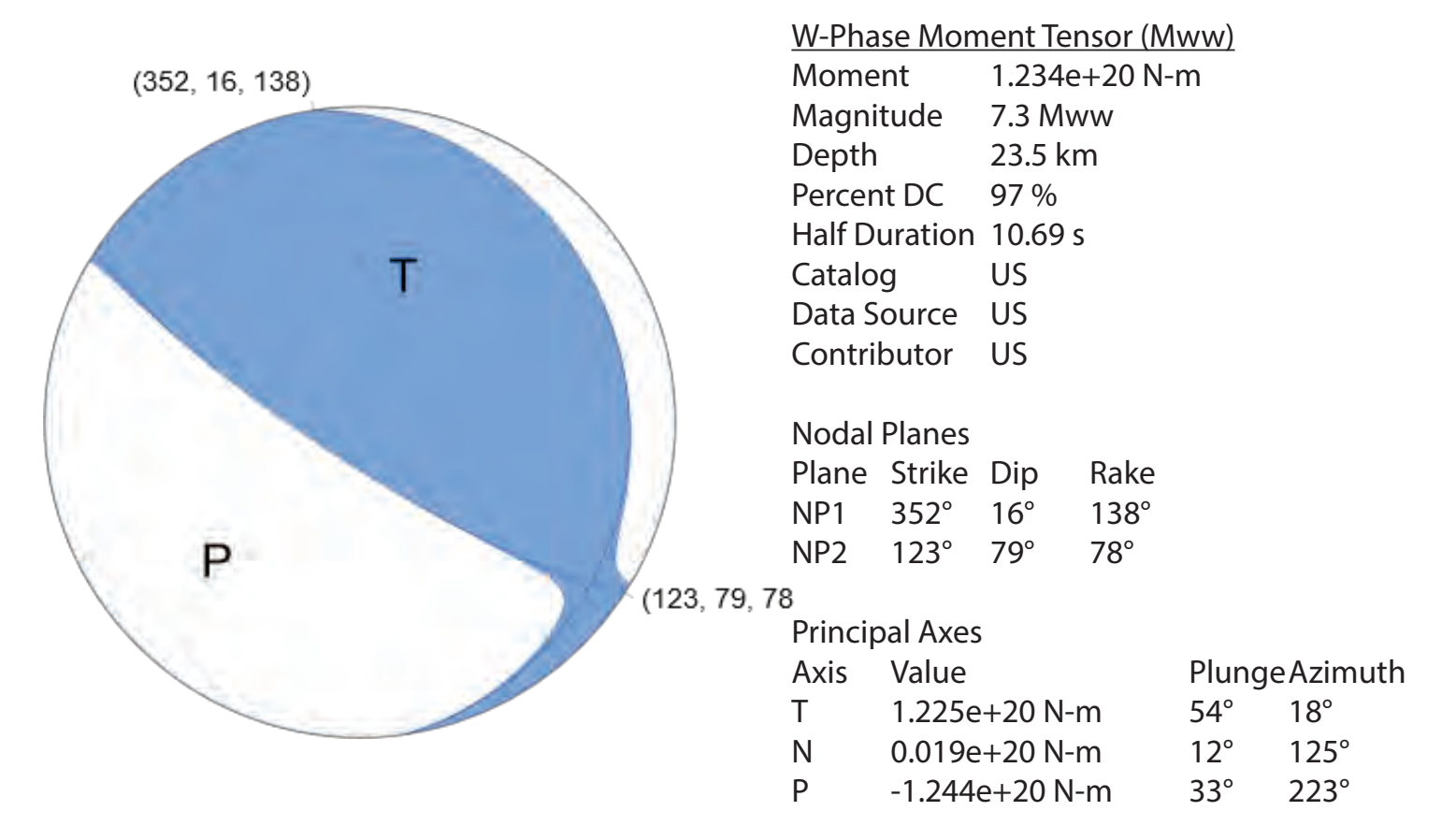


The November 12, 2017 magnitude 7.3 earthquake near the border of Iraq and Iran occurred at a mid-crustal depth of ~25 km within the Arabian tectonic plate, near the Eurasian-Arabian plate boundary. Very strong shaking was experienced (see modeled intensities, inset on left, and Felt Reports, below) from this earthquake: large buildings in nearby cities in Iraq and Iran have been extensively damaged or destroyed, and hundreds of deaths of been reported.

USGS Felt Reports

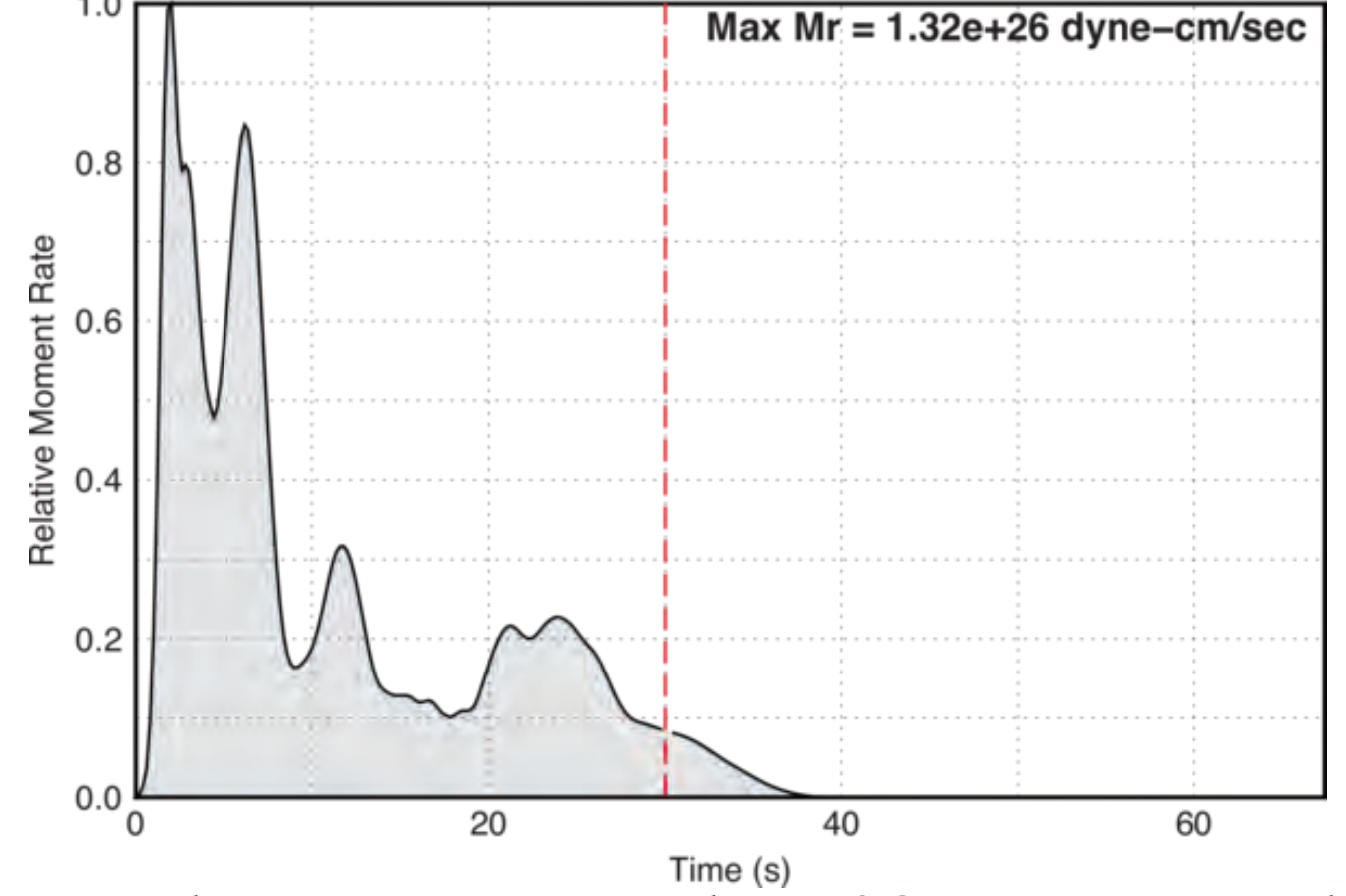


USGS Source Mechanism

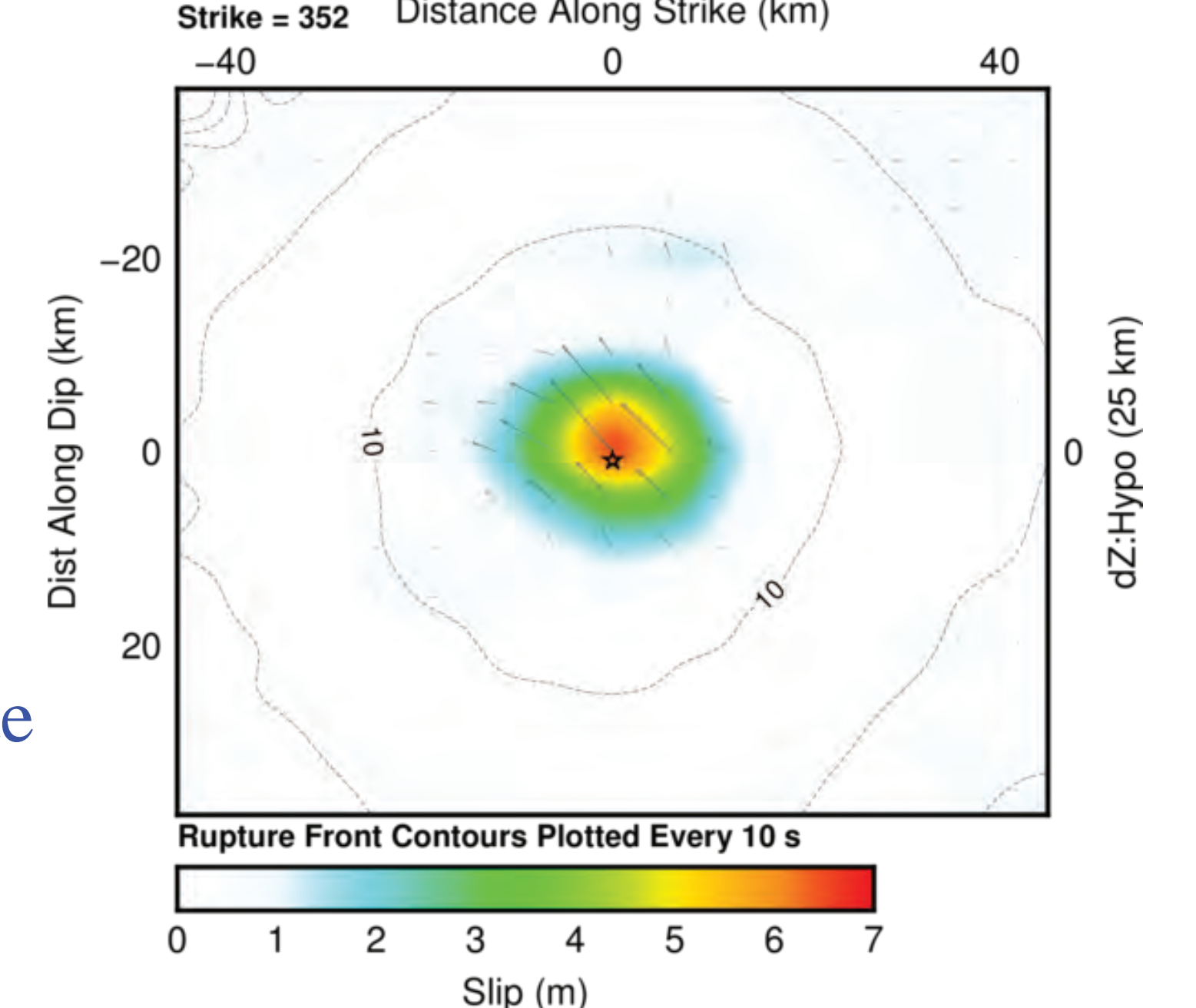


This mechanism indicates thrust faulting on a southwest- or northeast-dipping fault plane.

Rupture Energy Release

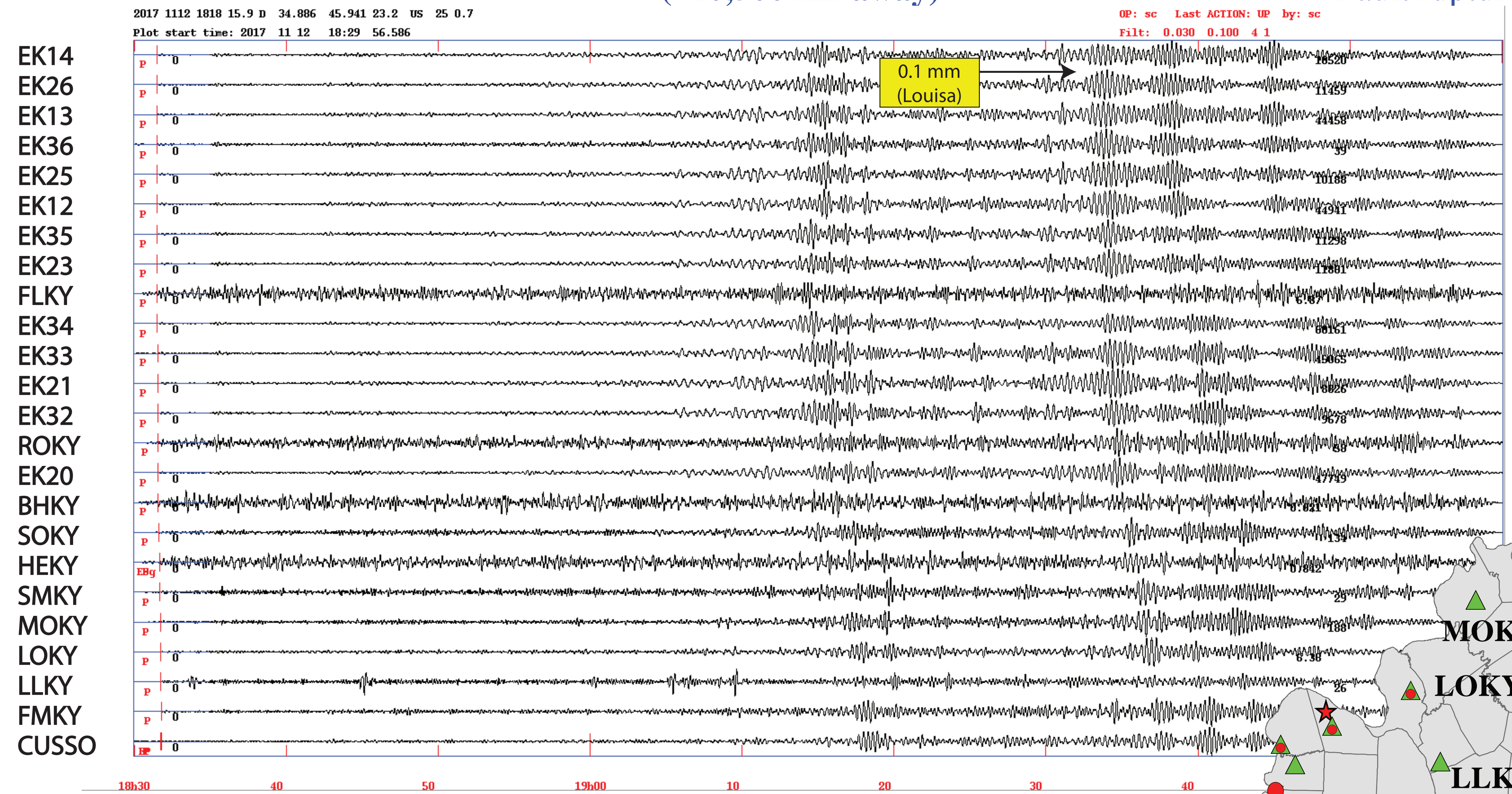


Slip (rupture) along Fault

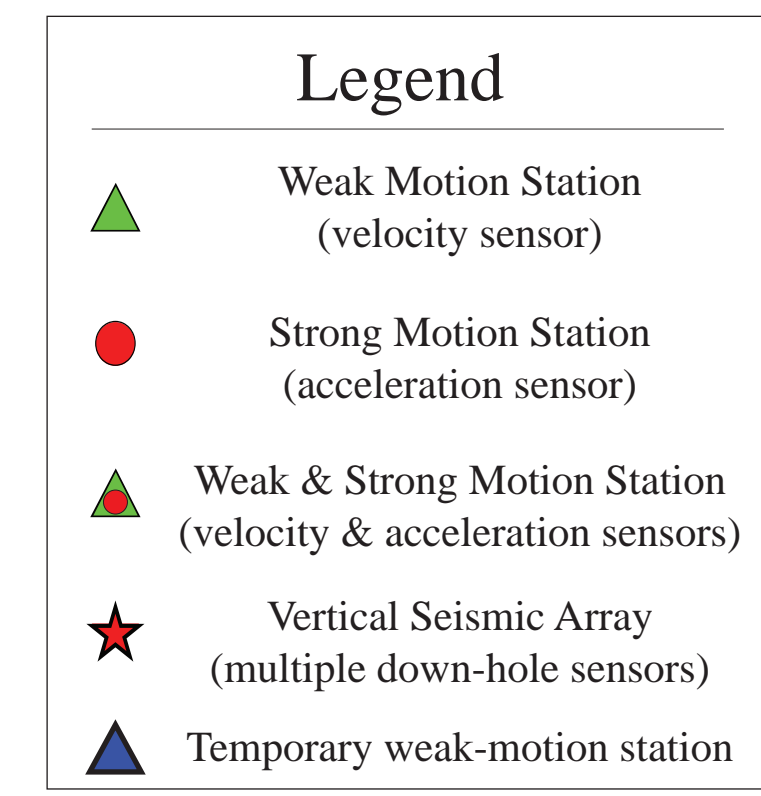


Slip of up to 7 m may have occurred (at ~25 km depth).

KSSMN Seismograms (~10,500 km away)



Fault rupture took ~40s to complete



KSSMN Seismic Stations

Stations with seismograms are labeled by name.