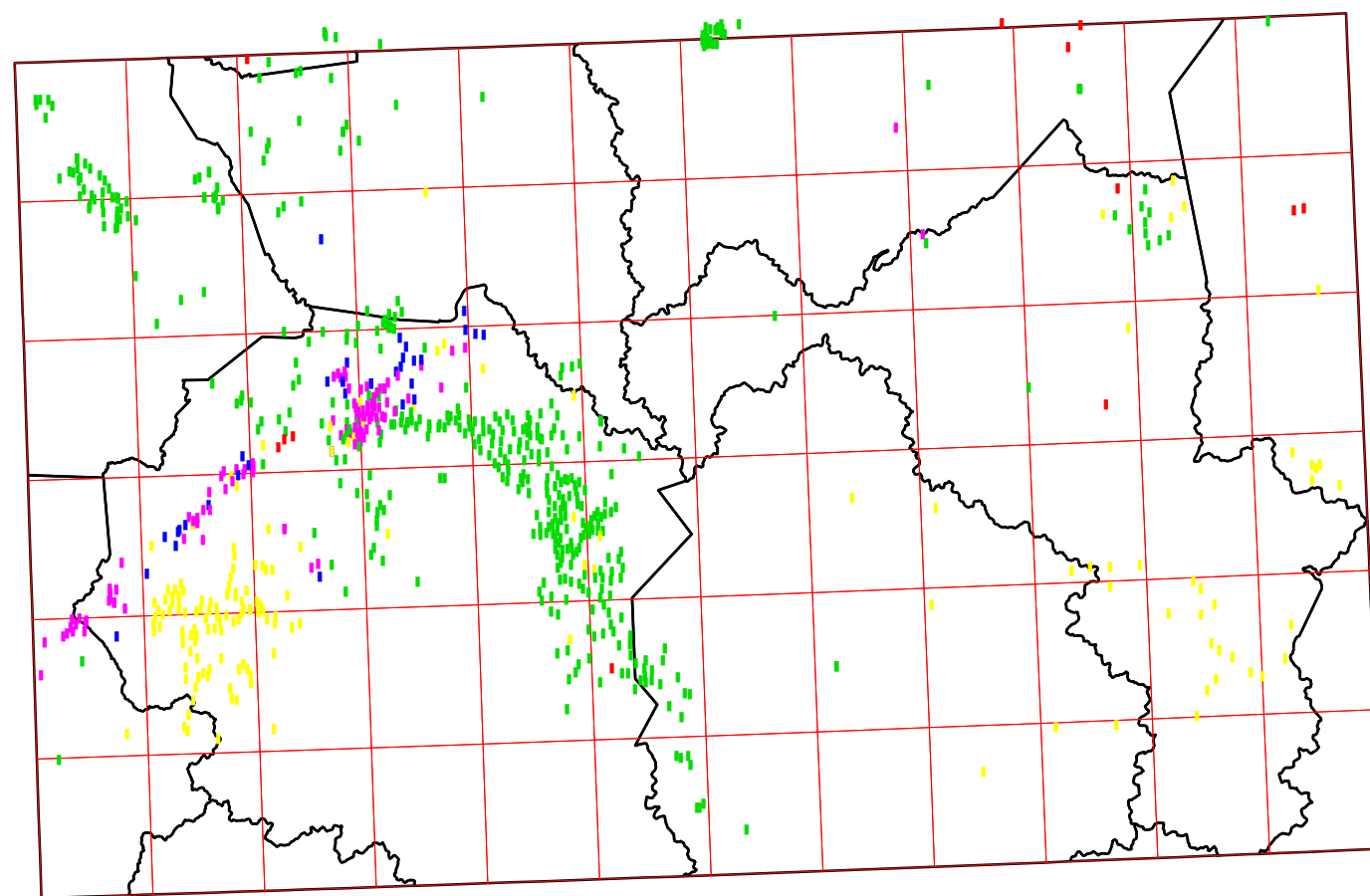


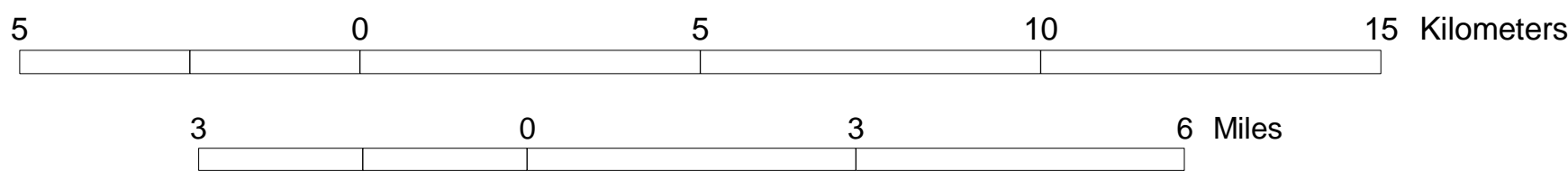
Generalized Distribution of Production
Excluding Mississippian Carbonate and Devonian Shale Wells



Scale 1:500,000
Pennsylvanian # Mississippian # "Coniferous" Big Six
Lexington # Knox

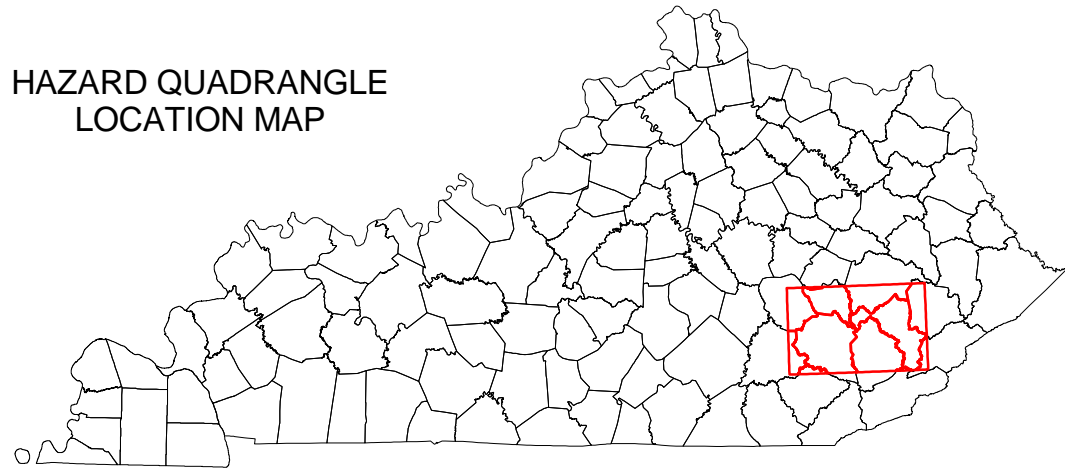
OIL AND GAS MAP OF THE HAZARD
30 x 60 MINUTE QUADRANGLE, KENTUCKY

Brandon C. Nuttall



Scale 1:100,000

HAZARD QUADRANGLE
LOCATION MAP

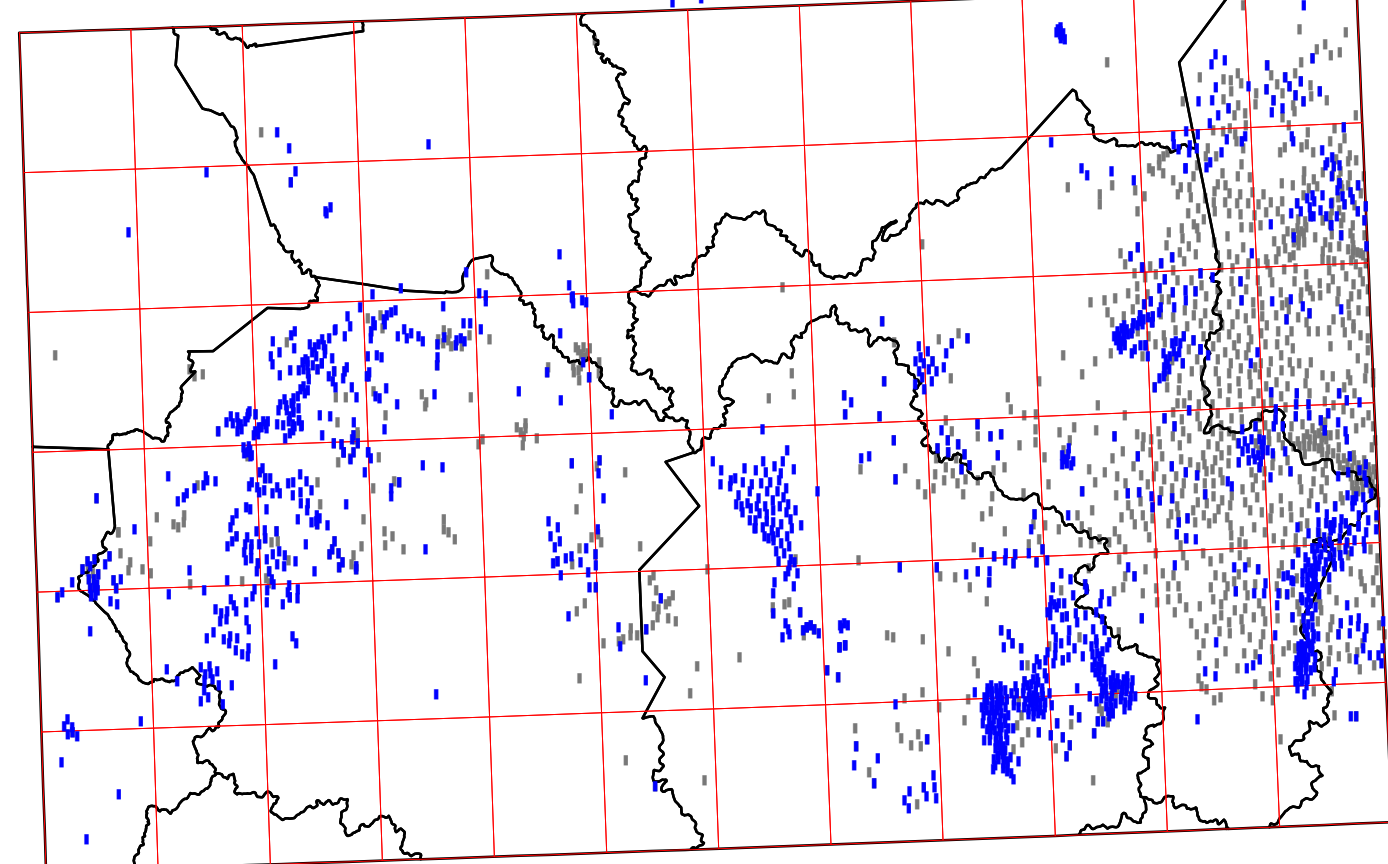


EXPLANATION

- Oil well
- Abandoned oil well
- Combined oil and gas well
- Abandoned oil and gas well
- Gas well
- Abandoned gas well
- Dry and abandoned well
- Well location
- Scanning project location
- Secondary recovery or injection well
- Abandoned service well
- Stratigraphic (core) test

This map was produced using the digital line graph (DLG) base map (1:100,000 scale, universal transverse Mercator, zone 16) available from the U.S. Geological Survey. Scanning project locations are wells gathered for archival purposes; minimal digital geologic and completion data are available. Fault data are from the digital version of the 1:500,000-scale "Geologic Map of Kentucky" by M.C. Noger (1988, U.S. Geological Survey) and are supplied for reference only. Fault information does not comply with 1:100,000-scale map accuracy standards. Digital oil and gas well location and completion data and copies of well records are available at the Kentucky Geological Survey, 228 Mining and Mineral Resources Building, University of Kentucky, Lexington, Kentucky, phone 606-257-5500.

Generalized Distribution of Production from
Mississippian Carbonate and Devonian Shale Wells



Scale 1:500,000
Mississippian carbonate # Devonian Ohio Shale
("Big Lime")