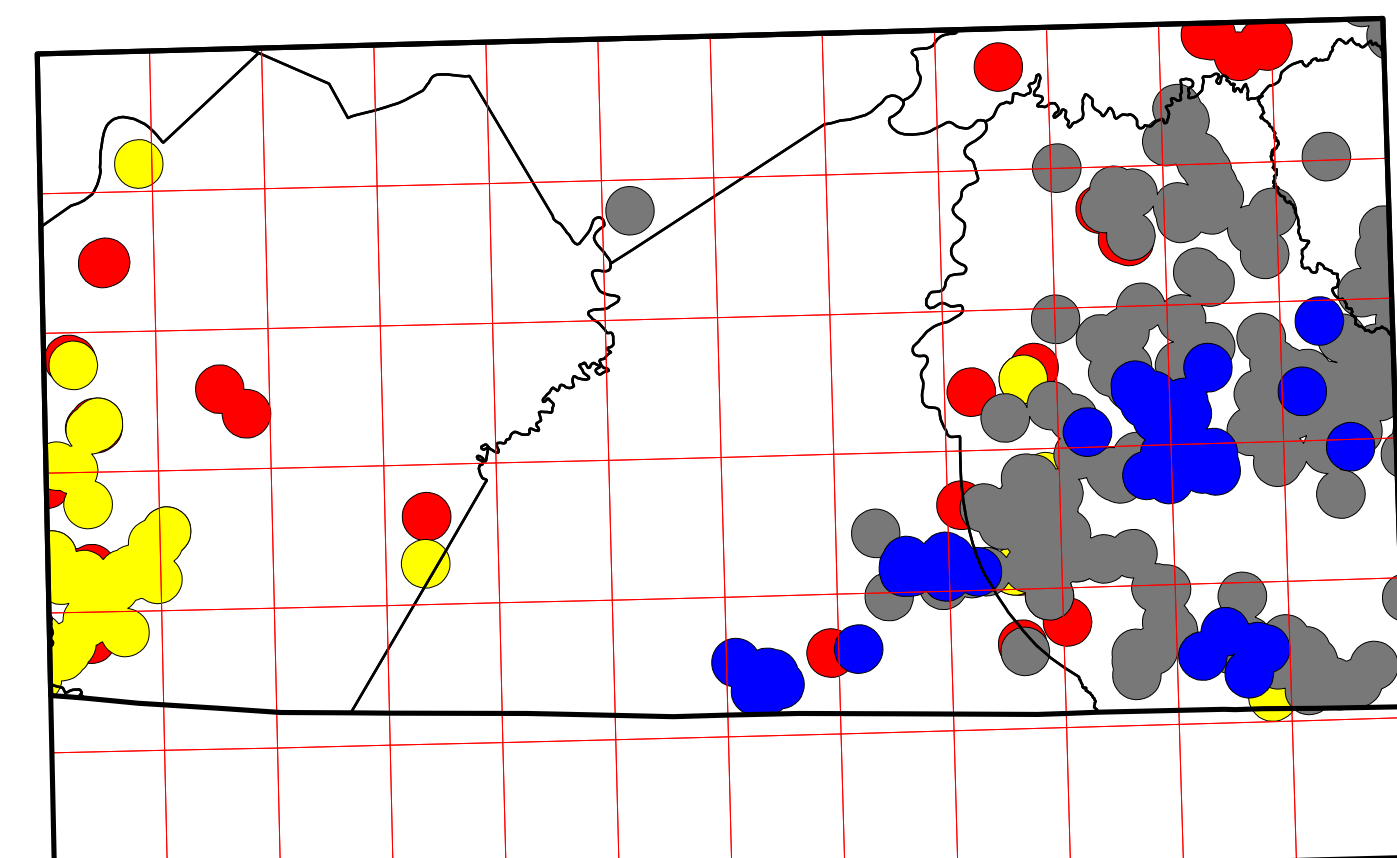


Generalized Distribution of
Producing Wells, Excluding Mississippian Production

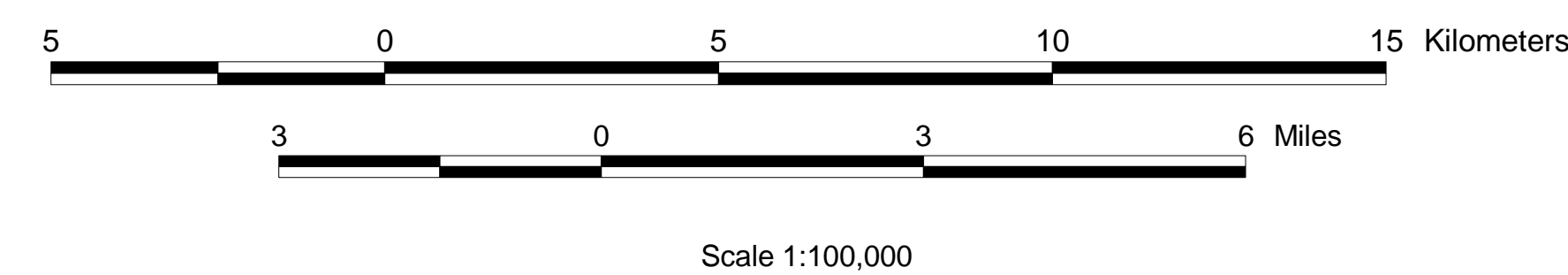


■ Pennsylvanian sands
■ Devonian/Mississippian black shale
■ Upper and Middle Ordovician carbonates
■ Ordovician Knox Group

The general distribution is shown by constructing 1-mile-diameter buffers around producing wells. Colored areas are stacked in stratigraphic order; thus, in Carter coordinate section B-55, Ordovician Knox production underlies much of the Upper and Middle Ordovician production.

OIL AND GAS MAP OF THE CORBIN 30 x 60 MINUTE QUADRANGLE, KENTUCKY

Compiled by Brandon C. Nuttall

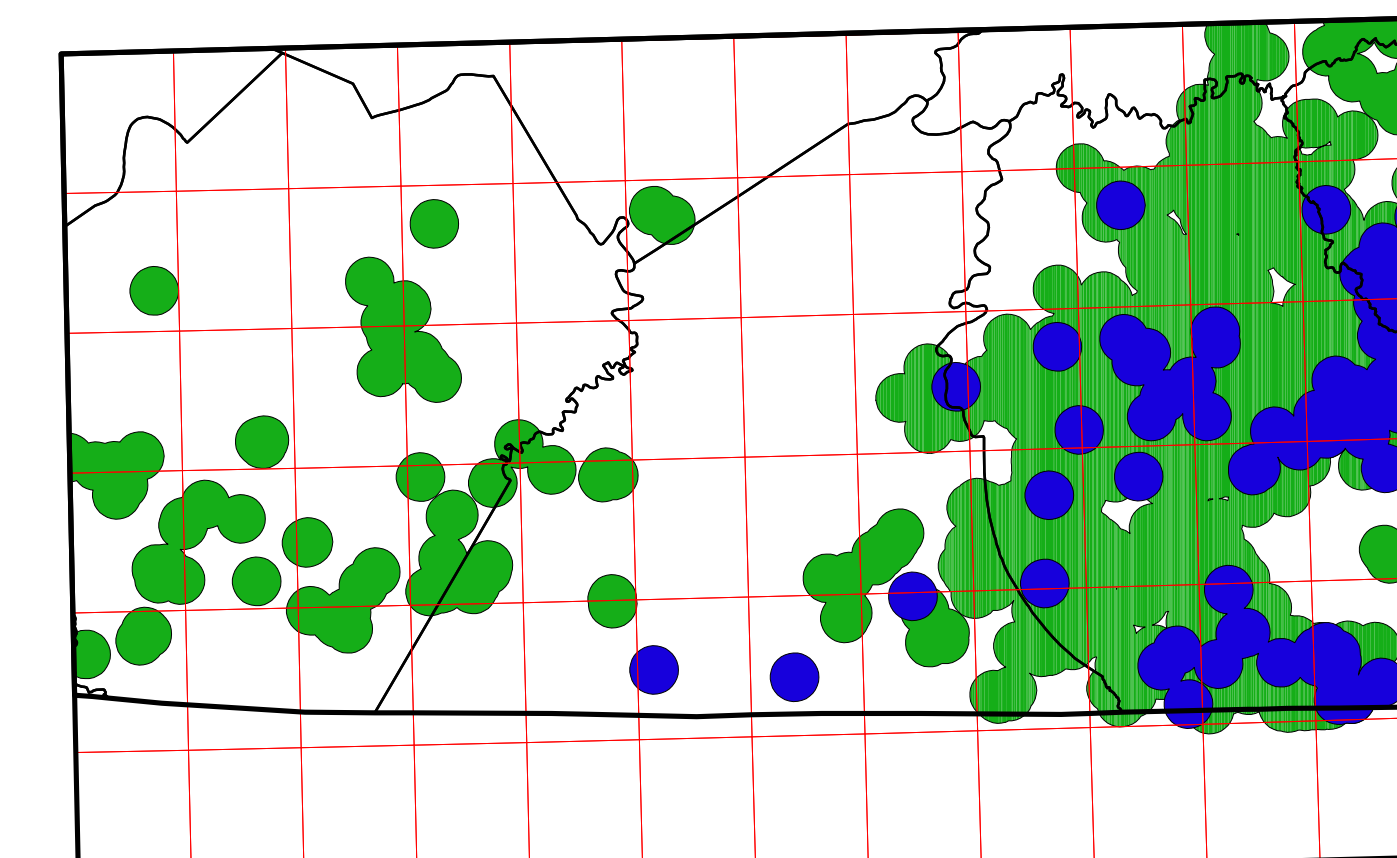


CORBIN QUADRANGLE
LOCATION MAP

- EXPLANATION**
- Oil and gas well locations
 - Oil well: 9
 - Abandoned oil well: 1
 - Combined oil and gas well: *
 - Gas well: a
 - Abandoned gas well: E
 - Gas storage well: a
 - Dry and abandoned well: .
 - Well location: !
 - Scanning project well location: 6
 - Secondary recovery or injection well: T
 - Abandoned service well: !
 - Stratigraphic (core) test: !
 - 5-minute Carter coordinate section: [red box]
 - 1-minute Carter coordinate section: [black box]
 - County boundaries: [dashed line]
 - State boundary: [thick black line]
 - Forests and parks: [green area]
 - Daniel Boone National Forest: [light green area]
 - Parks and recreational areas: [dark green area]

This map was produced using the digital line graph (DLG) base map (1:100,000 scale, universal transverse Mercator, zone 16) available from the U.S. Geological Survey. Scanning project well locations have data gathered for archival purposes; minimal digital geologic and completion data for these wells are available. Digital oil and gas well location and completion data and copies of well records are available at the Kentucky Geological Survey, 228 Mining and Mineral Resources Building, University of Kentucky, Lexington, Kentucky 40506-0107, phone 606-257-5500.

Generalized Distribution of
Mississippian Producing Wells



■ Mississippian sands
■ Mississippian carbonate ("Big Lime")

The general distribution is shown by constructing 1-mile-diameter buffers around producing wells. Colored areas are stacked in stratigraphic order; thus, in Carter coordinate section B-55, Ordovician Knox production underlies much of the Upper and Middle Ordovician production.