

PLATE 21.

FAVOSITES BACULUS, Nov. Spec.

Devonian.

1. 2. 3. Lateral views of three several coralla from the Lower Devonian,
Falls of the Ohio. *Zaphrentis exigua*, it will be remarked, is
attached to the matrix in which example 3 is imbedded. Collection of
the author.
4. Longitudinal section of the upper portion of a small corallum from the
same horizon and place. Collection of the author.

FAVOSITES DIGITATUS.

Devonian.

5. Portion of a corallum from the dark red clay of the encrinal limestone
underlying the shale which separates the Devonian and Sub-
carboniferous formations, near Louisville. Collection of the
author.

KENTUCKY GEOLOGICAL SURVEY.

PLATE 21.

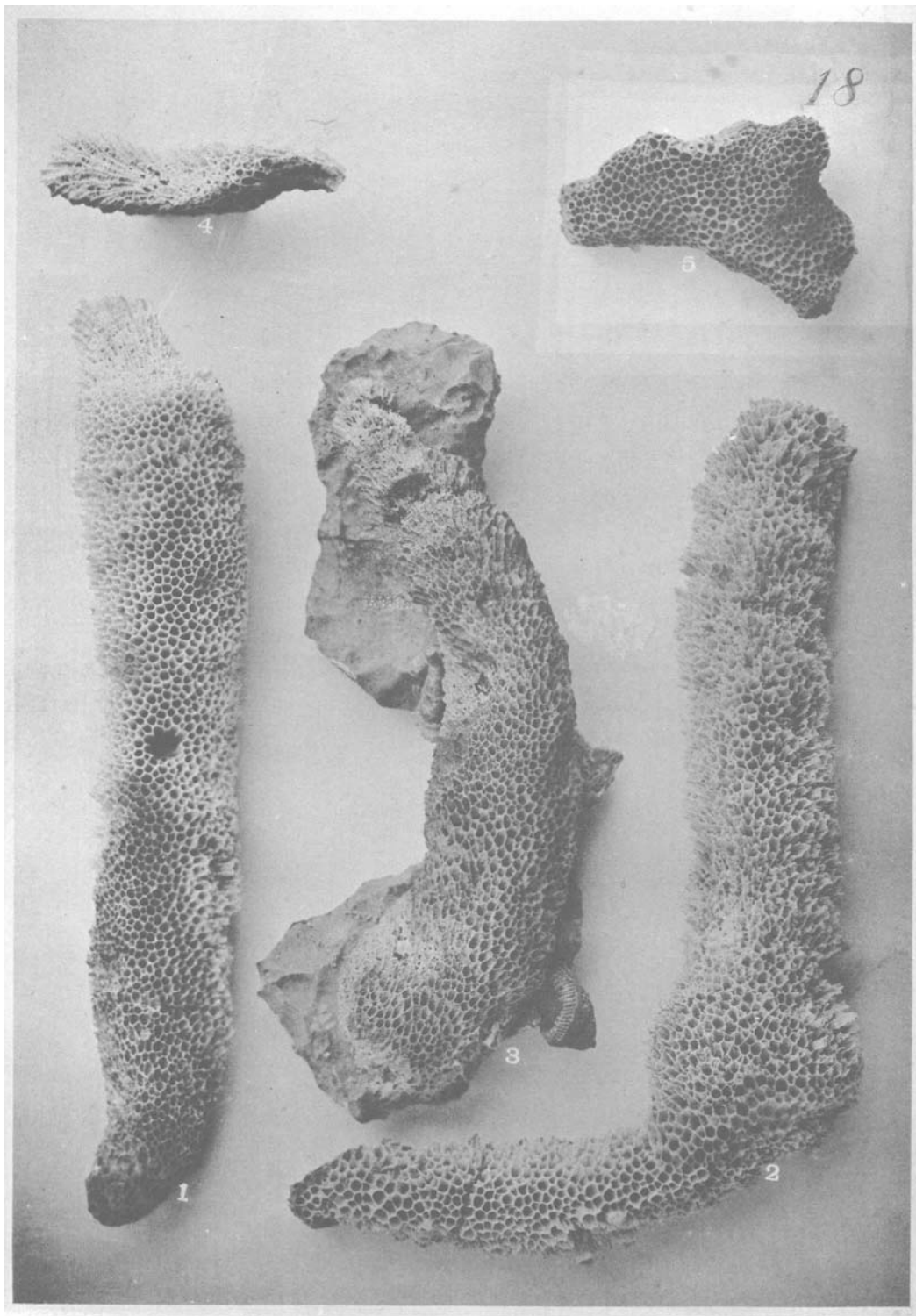


PLATE 22.

FAVOSITES ARBOR, Nov. Spec.

Devonian.

Lateral view of the upper fronds of a corallum twenty-eight inches long, from the Lower Devonian, Falls of the Ohio. The entire left frond is incrustated with *Stromatopora granulata*; on its end appears a basal expansion of *Favosites limitaris*. Collection of the author.

KENTUCKY GEOLOGICAL SURVEY.

PLATE 22.



PLATE 23.

FAVOSITES ARBOR, Nov. Spec.

Devonian.

1. Lateral view of a fragment of a frond from the Lower Devonian strata, Falls of the Ohio. Collection of Mr. McConathy.

FAVOSITES CYMOSUS, Nov. Spec.

Devonian.

2. Lateral view of a corallum from the blue clay of the Middle Devonian, falls of the Ohio. Collection of the author.
3. Upper surface of a corallum from the Lower Devonian, Falls of the Ohio. Collection of the author.
4. Lateral view of a corallum from the same place and horizon as example 3. Collection of the author.
5. Lateral view (prostrate) of a "sprout," or cyme, of uncommonly elongated growth, from the horizon and locality of example 2. Collection of the author.

KENTUCKY GEOLOGICAL SURVEY.

PLATE 23.

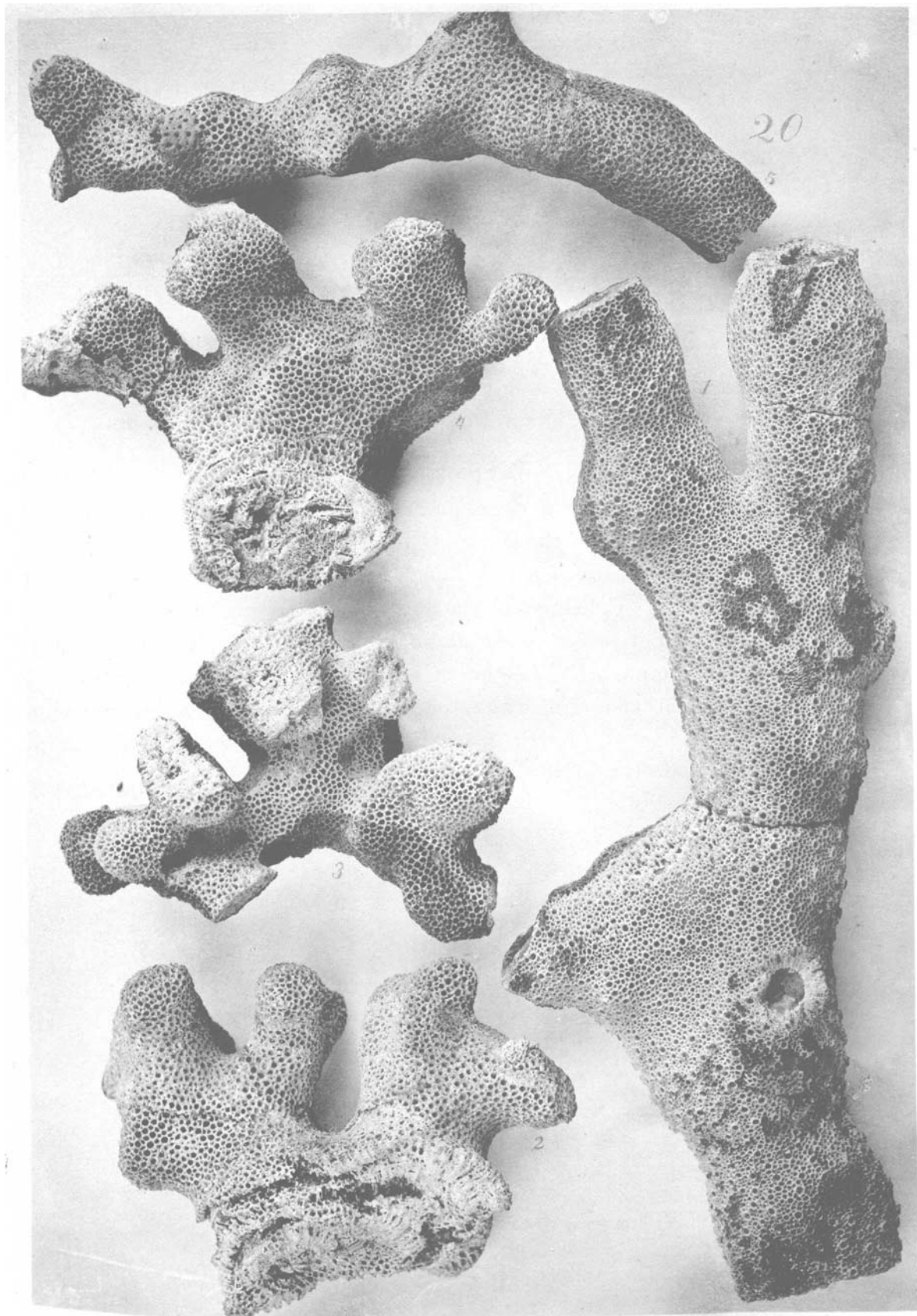


PLATE 24.

FAVOSITES FRUTEX, Nov. Spec.

Devonian.

1. Lateral view of a corallum from the Lower Devonian strata, Falls of the Ohio. Collection of the author.
2. Upper portion of a frond from the same place and horizon. Collection of the author.

FAVOSITES CRISTATUS, varietas MAJOR.

Niagara.

3. Lateral view of a fragment with squamous walls, from the white clay of the upper Niagara strata, near Louisville. Collection of Mr. McConathy.

FAVOSITES IMPEDITUS, Nov. Spec.

Devonian.

4. 5. Lateral views of coralla from the Lower Devonian strata, Falls of the Ohio. Collection of the author.

FAVOSITES CLELANDI, Nov. Spec.

Devonian.

6. View of a portion of the upper surface of a corallum from the Lower Devonian, Falls of the Ohio. Collection of the author.

KENTUCKY GEOLOGICAL SURVEY.

PLATE 24.

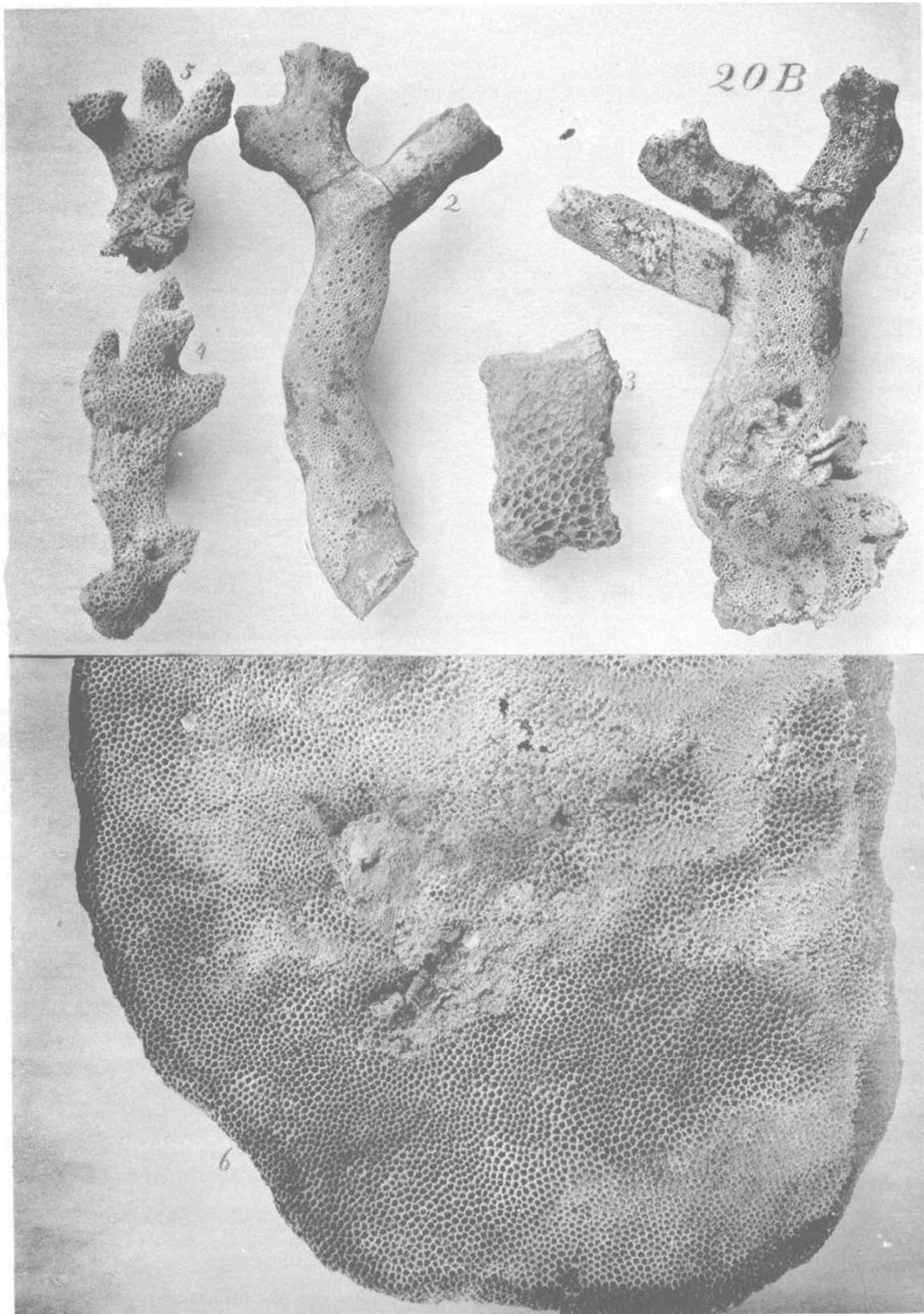


PLATE 25.

FAVOSITES GOODWINI, *Nov. Spec.*

Devonian.

The two examples in the lower right corner are coralla of compact, non-ramous growth. Lateral views of them are exhibited.

A view of the upper surface of a corallum is presented in the figure occupying the upper right corner.

The views offered by the other examples are lateral.

Found in the encrinal limestone, and the dark red clay derived therefrom, lying just below the shale of the Upper Devonian.

Collection of the author.

KENTUCKY GEOLOGICAL SURVEY.

PLATE 25.

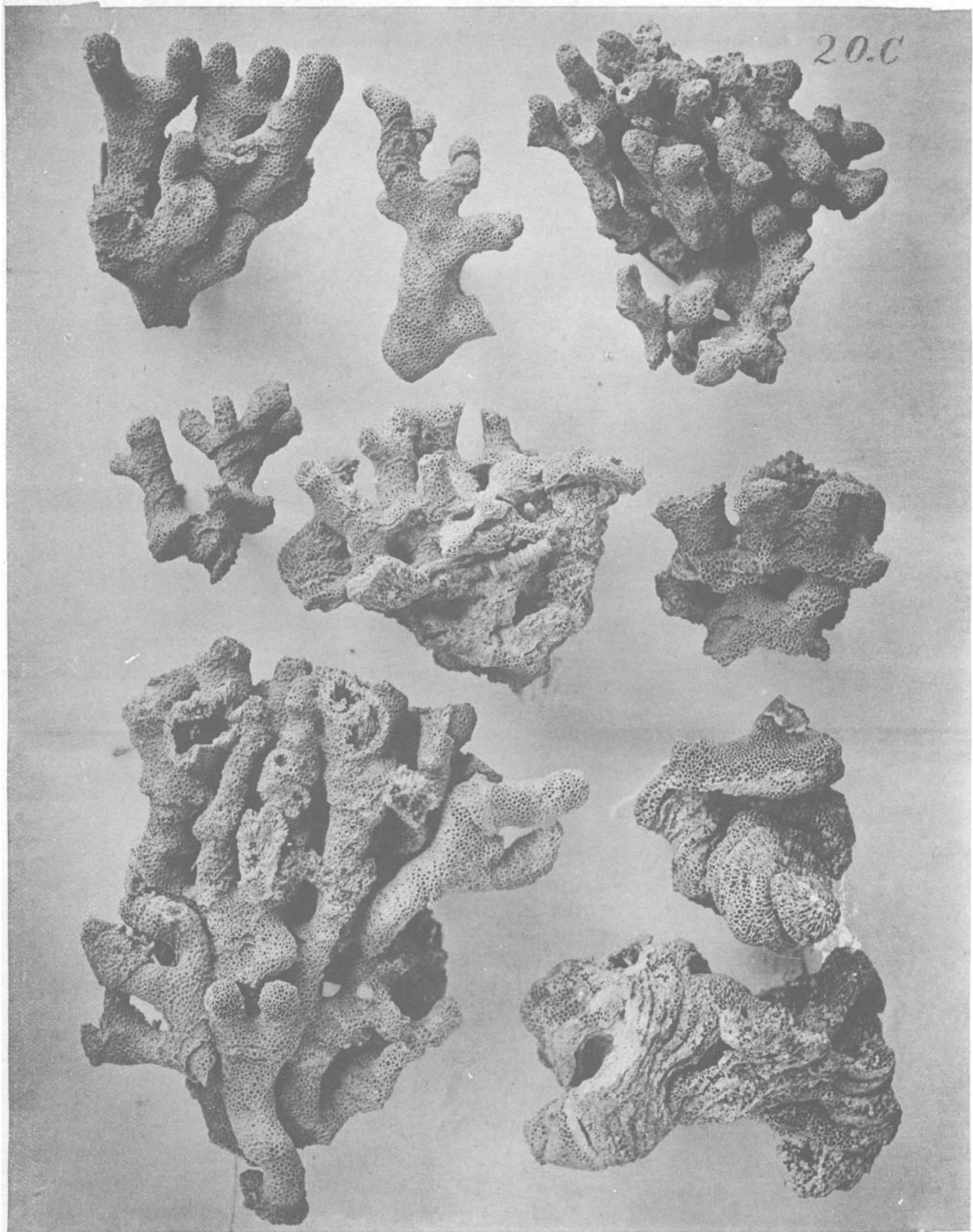


PLATE 26.

FAVOSITES EXIMIUS, Nov. Spec.

Devonian.

1. Upper surface of a corallum from the dark red encrinal limestone clay of the Upper Devonian, near Louisville. Collection of the author.

FAVOSITES FUSTIFORMIS, Nov. Spec.

Devonian.

2. Lateral view of a corallum, showing the tubes of some coralllets in section and the epithecal secretion on the outside of walls where new departures of growth occur; from the Lower Devonian, Falls of the Ohio. Collection of the author.
3. Lateral view of a corallum, with base incrusting a fragment of a frond of *Cladopora expatiata*; from the horizon and locality of example 2. Collection of the author.

KENTUCKY GEOLOGICAL SURVEY.

PLATE 26.

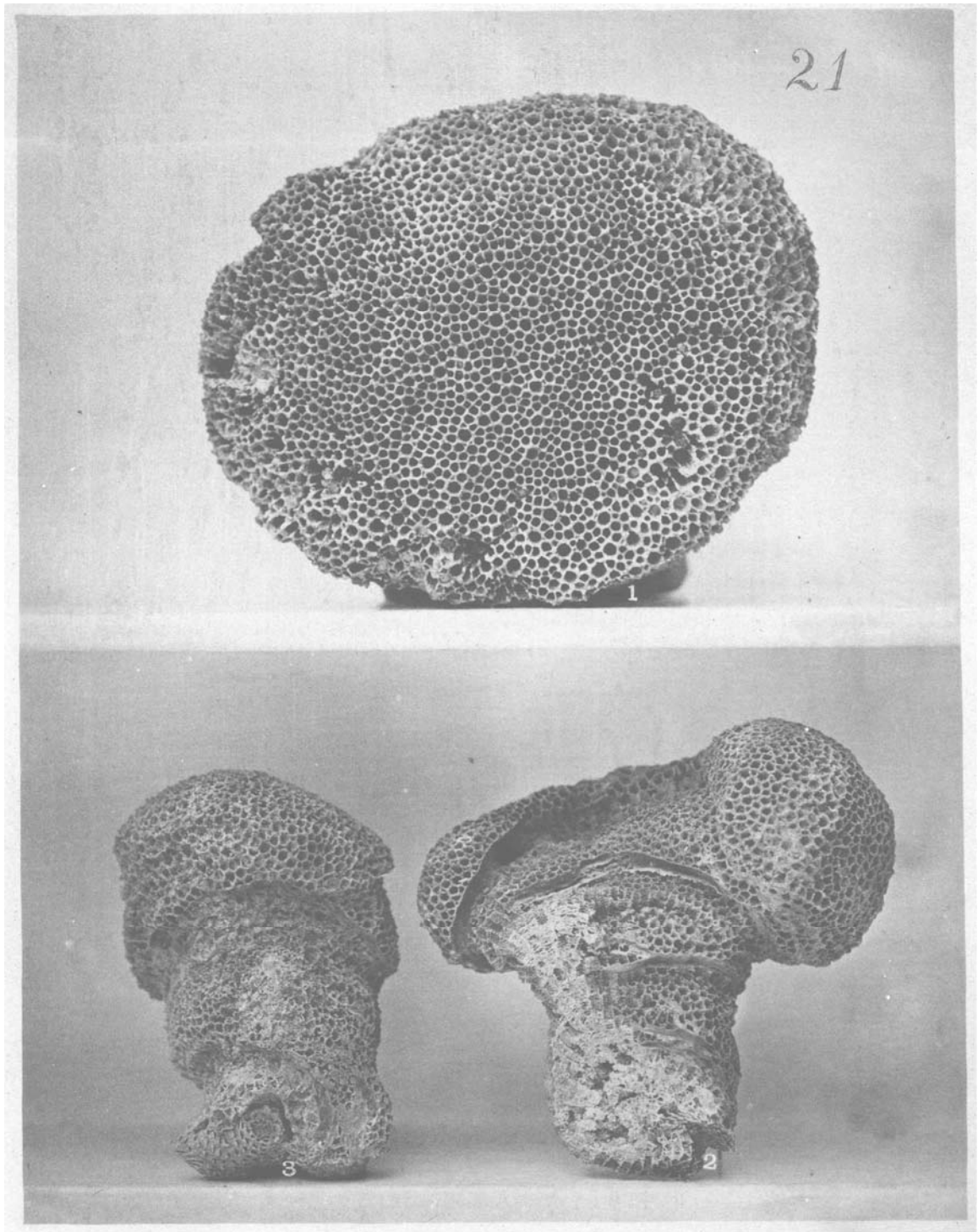


PLATE 27.

MICHELINIA INSIGNIS.

Devonian.

1. View of the epitheated under surface of a corallum, showing the semi-cylindrical shape of the outer walls; to the left of the center several of the coralllets become temporarily disjunct, but again unite with their neighbors by approximation; from the encrinal limestone clay of the Upper Devonian, near Louisville. Collection of the author.

FAVOSITES CONVEXUS, Nov. Spec.

Devonian.

2. View of the under surface of a corallum from which the epitheca is removed so as to show the mural pores and squamous walls; from the ferruginous clay of the Lower Devonian, near Louisville. Collection of the author.
3. (Central small specimen.) View of the under surface of a small corallum, covered with a deeply-wrinkled epitheca; from the Lower Devonian, Falls of the Ohio. Collection of the author.

FAVOSITES MUNDUS, Nov. Spec.

Devonian.

4. Upper surface of a corallum in which the larger sub-rotund tubes are more regularly recurring than is common; from the blue clay of the Middle Devonian, Falls of the Ohio. Collection of the author.

FAVOSITES ROTUNDITUBA, Nov. Spec.

Devonian.

5. Upper surface of a corallum from the encrinal limestone clay just below the shale of the Upper Devonian, near Louisville. Collection of the author.

FAVOSITES PROXIMUS, Nov. Spec.

Devonian.

6. Upper surface of a corallum of expanded discoidal shape, composed of coralllets whose tubes are above average size; from the ferruginous clay of the Lower Devonian, near Louisville. Collection of Dr. Knapp.

FAVOSITES EXIMIUS, Nov. Spec.

Devonian.

7. Lateral view of a corallum of turbinate form, from the dark red encrinal limestone clay of the Upper Devonian, near Louisville. Collection of the author.

KENTUCKY GEOLOGICAL SURVEY.

PLATE 27.

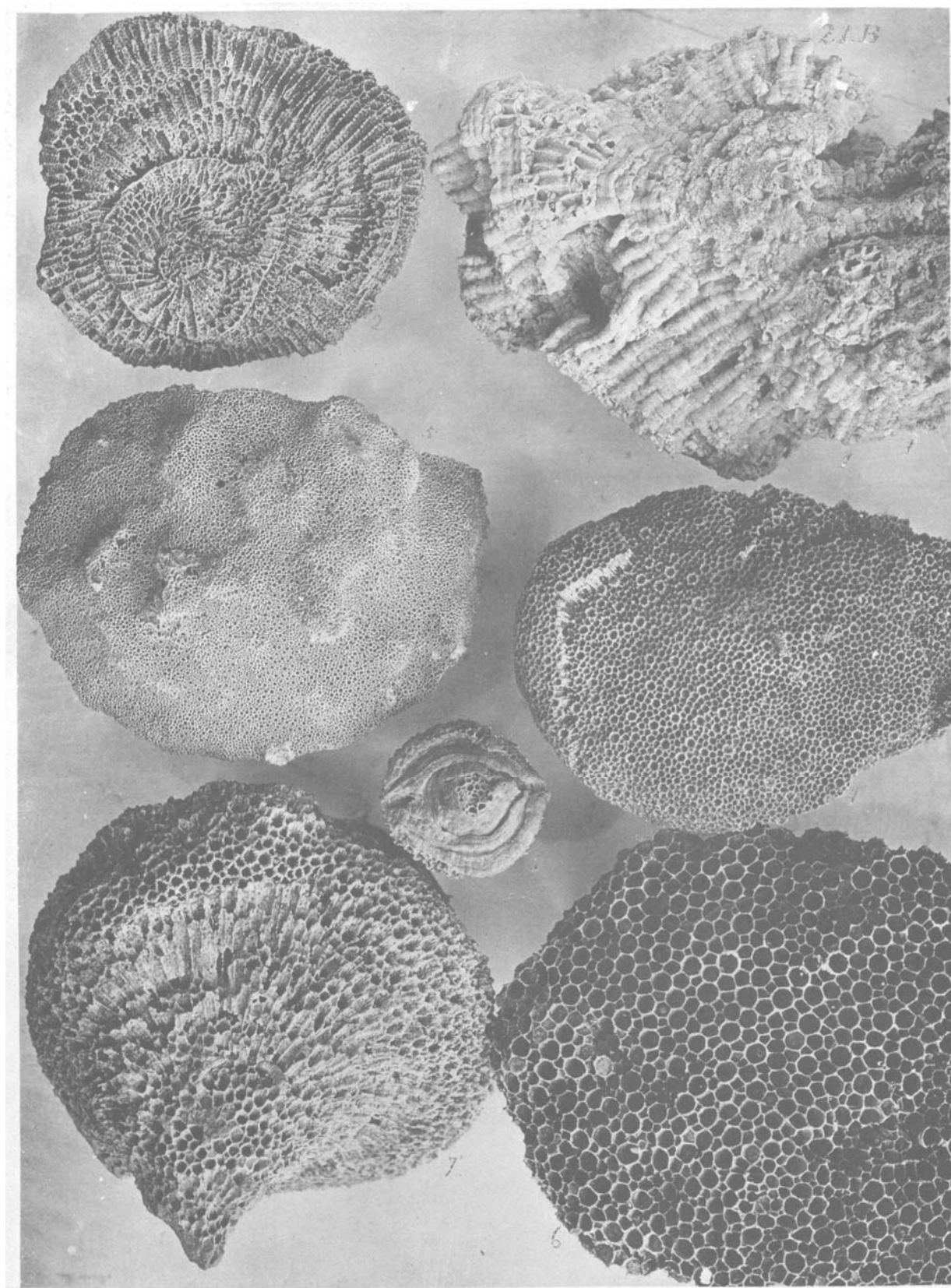


PLATE 28.

FAVOSITES MUNDUS, Nov. Spec.

Devonian.

1. Upper surface of a corallum from the ferruginous clay of the Middle Devonian, near Louisville. Collection of the author.
2. Lateral view of a corallum, the tubes of many of whose coralllets are closed with opercula; from the blue clay of the Middle Devonian, Falls of the Ohio. Collection of the author.

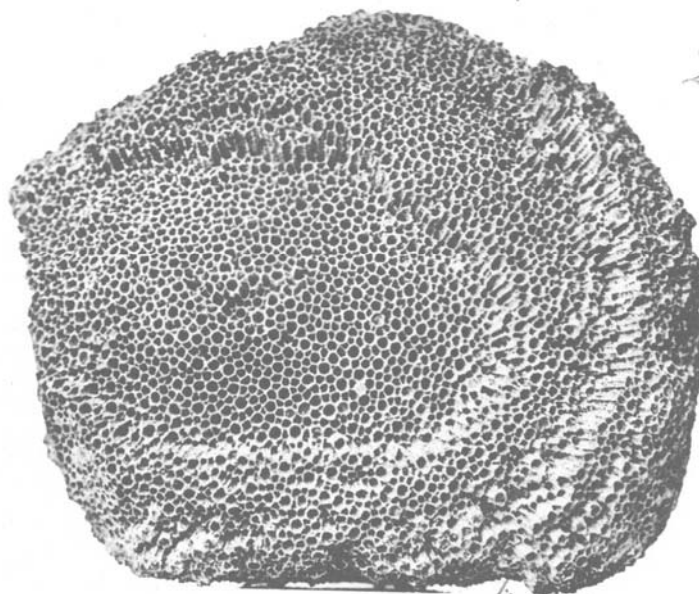
FAVOSITES PROXIMUS, Nov. Spec.

Devonian.

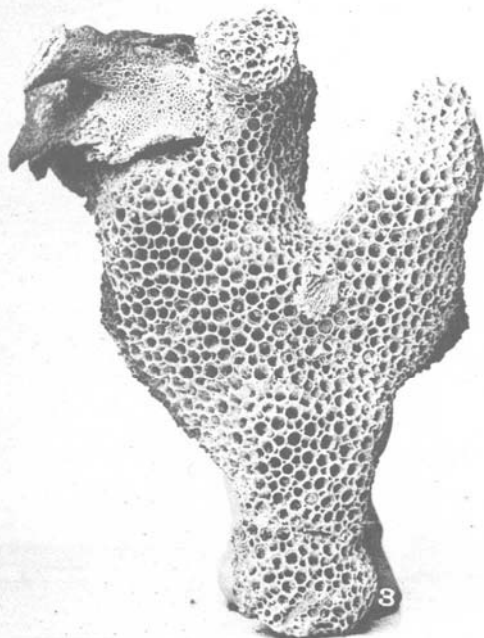
3. Lateral view of a sub-ramous corallum, in some of whose tubes appear imperfect opercula; a basal expansion of Favosites clausus is attached to its upper portion; from the Lower Devonian strata, Falls of the Ohio. Collection of the author.

KENTUCKY GEOLOGICAL SURVEY.

PLATE 28.



22



8

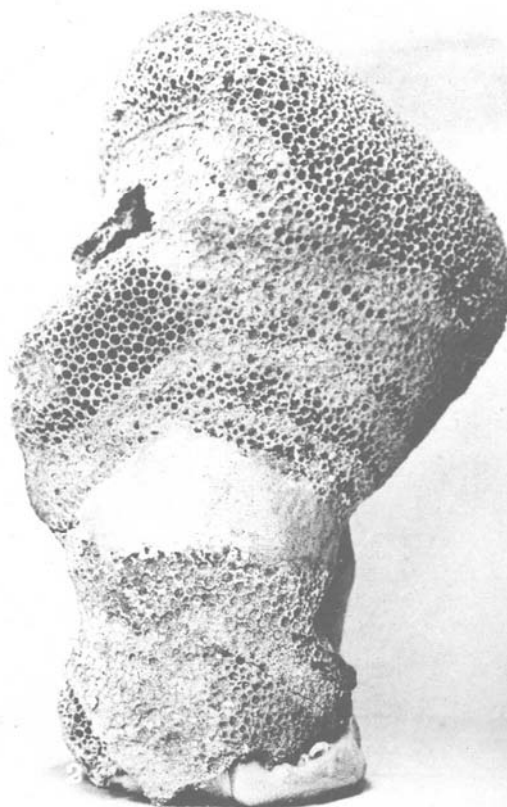


PLATE 29.

FAVOSITES CANADENSIS.

Devonian.

1. 2. Upper surface of fragments of coralla having the common form, from the Lower Devonian, Falls of the Ohio. Collection of the author.
3. Lateral view of a corallum of rarely digitate growth, from the horizon and locality of the preceding examples. Collection of the author.

KENTUCKY GEOLOGICAL SURVEY.

PLATE 29.

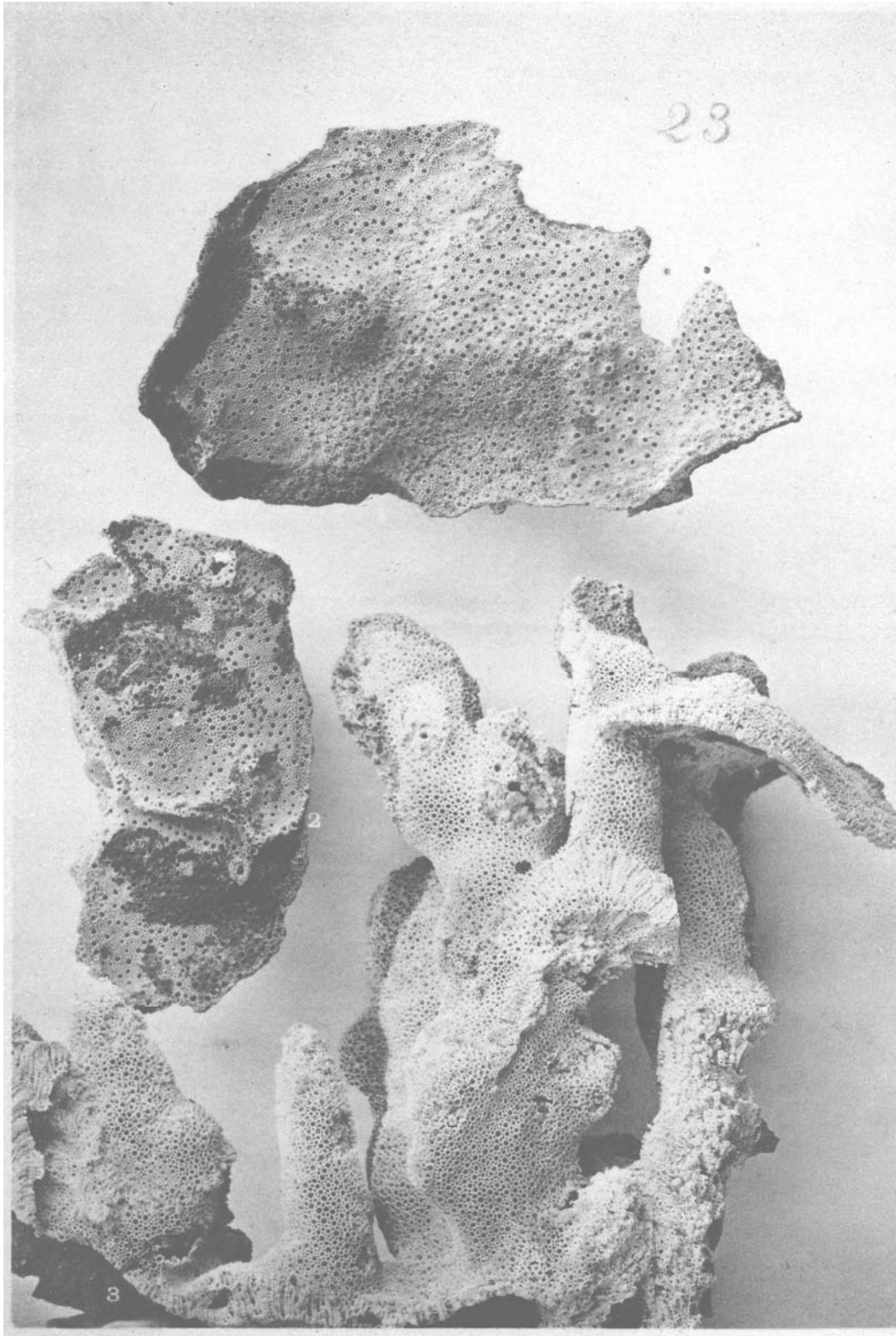


PLATE 30.

FAVOSITES LIMITARIS.

Devonian.

Lateral view of a corallum (two thirds of the natural size) from the
Lower Devonian, Falls of the Ohio. Collection of the author.

KENTUCKY GEOLOGICAL SURVEY.

PLATE 30.

