

*Jeannine Blackwell, Ph.D., is Dean of the Graduate School.*

The University of Kentucky began offering graduate work in 1870, and awarding degrees in 1876. The Graduate School was organized as a distinct unit in 1912.

The Graduate School is concerned with advanced study and research carried on by the faculty and students of all colleges and departments. Under it, the total graduate resources of the University are merged in order to promote the achievement of knowledge in an atmosphere of free and lively inquiry.

More information is available on the Web at: [www.rgs.uky.edu/gsl/](http://www.rgs.uky.edu/gsl/).

### GRADUATE DEGREES

Graduate work is offered in most colleges in the University. The following advanced degrees are conferred:

DOCTOR OF EDUCATION  
 DOCTOR OF MUSICAL ARTS  
 DOCTOR OF PHILOSOPHY  
 DOCTOR OF SCIENCE  
 MASTER OF ARTS  
 MASTER OF ARTS IN EDUCATION  
 MASTER OF ARTS IN INTERIOR DESIGN,  
 MERCHANDISING AND TEXTILES  
 MASTER OF BUSINESS ADMINISTRATION  
 MASTER OF CIVIL ENGINEERING  
 MASTER OF EDUCATION  
 MASTER OF ENGINEERING  
 MASTER OF FINE ARTS  
 MASTER OF HEALTH ADMINISTRATION  
 MASTER OF HISTORIC PRESERVATION  
 MASTER OF MINING ENGINEERING  
 MASTER OF MUSIC  
 MASTER OF PUBLIC ADMINISTRATION  
 MASTER OF PUBLIC HEALTH  
 MASTER OF REHABILITATION COUNSELING  
 MASTER OF SCIENCE  
 MASTER OF SCIENCE IN ACCOUNTING  
 MASTER OF SCIENCE IN AGRICULTURE  
 MASTER OF SCIENCE IN BIOMEDICAL  
 ENGINEERING  
 MASTER OF SCIENCE IN BIOSYSTEMS AND  
 AGRICULTURAL ENGINEERING  
 MASTER OF SCIENCE IN CHEMICAL  
 ENGINEERING  
 MASTER OF SCIENCE IN CIVIL ENGINEERING  
 MASTER OF SCIENCE IN COMMUNICATION  
 DISORDERS  
 MASTER OF SCIENCE IN EDUCATION  
 MASTER OF SCIENCE IN ELECTRICAL  
 ENGINEERING  
 MASTER OF SCIENCE IN FAMILY STUDIES  
 MASTER OF SCIENCE IN FORESTRY  
 MASTER OF SCIENCE IN HEALTH PHYSICS  
 MASTER OF SCIENCE IN INTERIOR DESIGN,  
 MERCHANDISING AND TEXTILES  
 MASTER OF SCIENCE IN LIBRARY SCIENCE  
 MASTER OF SCIENCE IN MANUFACTURING  
 SYSTEMS ENGINEERING  
 MASTER OF SCIENCE IN MATERIALS  
 SCIENCE AND ENGINEERING

MASTER OF SCIENCE IN MECHANICAL  
 ENGINEERING  
 MASTER OF SCIENCE IN MEDICAL SCIENCES  
 MASTER OF SCIENCE IN MINING ENGINEERING  
 MASTER OF SCIENCE IN NURSING  
 MASTER OF SCIENCE IN NUTRITIONAL SCIENCES  
 MASTER OF SCIENCE IN PHYSICAL THERAPY  
 MASTER OF SCIENCE IN PHYSICIAN ASSISTANT  
 STUDIES  
 MASTER OF SCIENCE IN PUBLIC HEALTH  
 MASTER OF SCIENCE IN RADIOLOGICAL  
 MEDICAL PHYSICS  
 MASTER OF SCIENCE IN VOCATIONAL  
 EDUCATION  
 MASTER OF SOCIAL WORK  
 PROFESSIONAL MASTER OF BIOMEDICAL  
 ENGINEERING  
 SPECIALIST IN EDUCATION

The degree of Doctor of Philosophy is offered with major work in the following fields: agricultural economics, anatomy and neurobiology, animal sciences, anthropology, biology, biomedical engineering, biosystems and agricultural engineering, business administration, chemical engineering, chemistry, civil engineering, communication, computer science, crop science, economics, educational and counseling psychology, electrical engineering, English, entomology, family studies, geography, geology, gerontology, studies in higher education, history, materials science and engineering, mathematics, mechanical engineering, microbiology, mining engineering, molecular and biomedical pharmacology, molecular and cellular biochemistry, music, nursing, nutritional sciences, pharmaceutical sciences, philosophy, physics and astronomy, physiology, plant pathology, plant physiology, political science, psychology, public administration, rehabilitation sciences, social work, sociology, soil science, Spanish, statistics, toxicology, and veterinary science.

### Multidisciplinary Graduate Degree Programs

There are seven multidisciplinary graduate degree programs administered in the Graduate School: Biomedical Engineering, Diplomacy and International Commerce, Gerontology, Health Administration, Nutritional Sciences, Public Administration, and Toxicology. Students interested in information on these programs should contact the program directors at the addresses listed below.

**Dr. David Puleo, Interim Director  
 Biomedical Engineering  
 207 Rose Street  
 University of Kentucky  
 Lexington, KY 40506-0070**

**Dr. Michael Desch, Director  
 The Patterson School of  
 Diplomacy  
 and International Commerce  
 455 Patterson Office Tower  
 University of Kentucky  
 Lexington, KY 40506-0027**

**Dr. Graham D. Rowles, Director  
 Gerontology  
 101 Sanders-Brown Center  
 800 South Limestone  
 University of Kentucky  
 Lexington, KY 40506-0230**

**Dr. Genia Toma, Director  
 James W. Martin School  
 of Public Policy and  
 Administration  
 Public Administration/  
 Health Administration  
 419 Patterson Office Tower  
 University of Kentucky  
 Lexington, KY 40506-0027**

**Dr. Lisa Cassis, Director  
 Graduate Center for  
 Nutritional Sciences  
 417 College of Pharmacy  
 University of Kentucky  
 Lexington, KY 40506-0082**

**Dr. Mary Vore, Director  
 Graduate Center for Toxicology  
 306 Health Sciences Research  
 Bldg.  
 University of Kentucky  
 Lexington, KY 40546-0305**

### ORGANIZATION OF THE GRADUATE SCHOOL

The Graduate Faculty consists of the Dean of the Graduate School and all persons appointed thereto by the President of the University. As the chief University agency for the promotion of the ideals of graduate study, it determines the policies of the Graduate School and makes recommendations to the University Senate on such matters as require the approval of that body. All rules affecting graduate work and the inauguration of new graduate programs must be approved by the Graduate Faculty.

**The Dean.** The Dean of the Graduate School is charged with the administration of the policies adopted by the Graduate Faculty and the University Senate relating to graduate studies.

**The Graduate Council** is composed of 18 members and the Dean of the Graduate School, who serves as chair. There are 16 faculty representatives and two student representatives. Associate deans serve in a nonvoting, ex officio capacity.

The Graduate Council approves or disapproves proposals concerning courses offered for graduate credit, and advises and lends assistance to the Dean of the Graduate School in his execution of policies and regulations determined by the Graduate Faculty.

**Directors of Graduate Studies.** A Director of Graduate Studies is appointed for each program of graduate study. Among other duties, each director serves as advisor to students majoring in his or her area.

## ADMISSION

Students seeking admission to a degree program in the Graduate School must hold a baccalaureate degree from a fully accredited institution of higher learning. An overall undergraduate grade-point average of 2.75 and 3.0 on all graduate work is required by the Graduate School. Individual departments may require higher grade-point averages.

All applicants for admission to degree programs in the Graduate School must submit official scores on the verbal, quantitative and analytical writing portions of the Graduate Record Examination. Business Administration and Accounting applicants substitute the Graduate Management Admission Test (GMAT). Also, applicants for the Health Administration, Public Administration, and Public Health programs may substitute the GMAT.

New students applying for admission must have two official transcripts sent by each institution of higher learning previously attended. Applicants may send official transcripts, issued by the Registrar in a sealed envelope, along with the application. All transcripts must be sent to the Graduate School.

International applicants must meet the requirements listed above, as well as the English proficiency requirement; additional details are available in *The Graduate School Bulletin*.

Students can submit applications for admission electronically from the Graduate School Web site at: [www.rgs.uky.edu/gsapplcation.html](http://www.rgs.uky.edu/gsapplcation.html). Otherwise, application forms can be printed from the Graduate School Web site or obtained by writing:

**The Graduate School  
351 Patterson Office Tower  
University of Kentucky  
Lexington, KY 40506-0027**

Complete applications must be submitted no later than one month before the beginning of the term the applicant intends to begin graduate work (six months for international applicants). Students should refer to the *Uni-*

*versity Calendar* in the front of this Bulletin for important dates.

## University Scholars Program (Combined Master's/Bachelor's Degree Program)

At the University of Kentucky there are some particularly gifted and highly motivated students whose well-defined academic and career plans include graduate study. The University Scholars program offers these students the opportunity and the challenge of integrating their undergraduate and graduate courses of study in a single continuous program culminating in both a baccalaureate and master's degree.

Requirements for this program are listed in the *Special Academic Programs* section of this Bulletin.

## Graduating Seniors as Part-Time Graduate Students

A senior at the University of Kentucky lacking no more than six credit hours for graduation and having an undergraduate grade-point average of at least 2.75 on all work attempted may register in a degree program in the Graduate School with the consent of his or her college dean, the Director of Graduate Studies, and the Dean of the Graduate School.

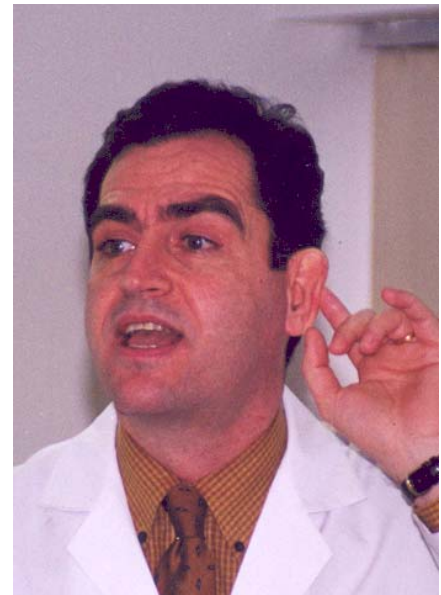
*The total load of such a student may not exceed 12 credit hours.* Graduate credit will be allowed for each credit hour of graduate work beyond the six or fewer credit hours needed to complete undergraduate requirements. Requirements for the undergraduate degree must be completed during the semester in which the student is allowed to register for part-time graduate work. A student applying for admission to the Graduate School under these conditions must fill out a petition form listing the course or courses to be taken in order to complete the undergraduate requirements. Petition forms are available in the Graduate School.

## Provisional Admission

Students wishing to pursue a higher degree who are temporarily ineligible for regular graduate admission status may be recommended by the Director of Graduate Studies for provisional admission status for a maximum of one full-time semester. Students should refer to *The Graduate School Bulletin* for further information.

## Post-Baccalaureate Graduate Students (Nondegree-Seeking Students)

Students who hold a baccalaureate degree and who wish to pursue graduate study **without a degree objective** may apply for admission as post-baccalaureate graduate students. An overall undergraduate grade-point average of 2.5 or better and 3.0 on all previous graduate work is required by the Graduate School for



**Associate Professor Butros Peter Sawaya,  
College of Medicine - recipient of the 2003  
Great Teacher Award.**

admission to post-baccalaureate status. Refer to *The Graduate School Bulletin* for further information.

## Advanced Degrees for Faculty Members

Members of the faculty, except those in the Community College System, having a rank higher than that of instructor may not be considered as candidates for degrees in the discipline in which they are employed and hold academic rank.

## DUAL DEGREE PROGRAMS

The University of Kentucky offers a number of dual degree programs; such programs require separate admission to each discipline involved. Dual degree programs currently in place are: J.D./M.B.A., J.D./M.P.A., M.D./M.B.A., M.D./M.P.H., Pharm.D./M.B.A., Pharm.D./M.P.A., Pharm.D./M.S. in Economics, B.S. in Engineering/M.B.A., and B.S. in Engineering/M.P.A. Combined study leading to both the M.D. and Ph.D. is also available. For more information on the dual degree programs, see *The Graduate School Bulletin*.

## JOINT AND COOPERATIVE DOCTORAL PROGRAMS

Cooperative doctoral programs in education are offered between the University of Kentucky and other state universities: Eastern Kentucky University, Morehead State University, Murray State University, and Western Kentucky University. These programs permit qualified candidates to complete approximately one year of graduate work above the master's degree at the cooperating university, and the work of each candidate is directed by a joint faculty committee from both institutions.

Cooperative doctoral programs in musicology, physics, and higher education are offered between the University of Kentucky and the University of Louisville; a cooperative program in geology between the University of Kentucky and Eastern Kentucky University; and a cooperative program in history between the University of Kentucky and Western Kentucky University. A cooperative doctoral program in rehabilitation sciences is offered between the University of Kentucky, Eastern Kentucky University, Murray State University, and Western Kentucky University. The University of Kentucky and the University of Louisville share a joint Ph.D. program in Social Work.

For more information on joint and cooperative programs, see *The Graduate School Bulletin*.

### INDEPENDENT STUDY PROGRAMS

#### (Correspondence Courses)

No graduate credit is given for courses taken by correspondence.

### REGISTRATION AND CLASSIFICATION

All students expecting graduate credit must be enrolled in the Graduate School. Graduate students will conform to the general registration schedule of the University and may not enter later than the last allowable date set by the University Registrar.

Before registering, a graduate student must obtain his or her advisor's approval of the proposed program.

### ASSISTANTSHIPS, FELLOWSHIPS, STUDENT SUPPORT

Financial assistance is available in the form of assistantships and fellowships. An **assistantship** is an appointment to specified teaching or research duties. A **fellowship** is a non-service award made to superior students to assist in the pursuit of an advanced degree. For more information on assistantships and fellowships, visit the Web at: [www.rgs.uky.edu/gsfellowship/fellowassist.html](http://www.rgs.uky.edu/gsfellowship/fellowassist.html).

### Assistantships

Over 1,500 teaching and research assistantships are available from departments and other units of the University. In addition to an assistantship stipend, full or partial tuition scholarships are available for most assistantship holders, as is University-provided health insurance.

The majority of assistantships are awarded for the academic year. Students interested in an assistantship should notify the appropriate Director of Graduate Studies by January for the next academic year; later applicants have a reduced chance of obtaining an assistantship. Most assistantship decisions are made by April for the coming academic year.

Notification of an assistantship comes from the program. Contact the Director of Graduate Studies in the program you seek to enter regarding the availability of positions or the status of assistantship offers.

### Fellowships

There are over 400 non-service fellowships available in all areas of graduate work. The majority of these fellowships include a stipend as well as a tuition scholarship and university-provided student health insurance. Duration may be from one to three years, depending on fellowship type. While fellowships are formally awarded by the Graduate School, nominations for most fellowships are made by the program in which a student seeks to enroll.

Almost all fellowships are awarded for the academic year. Departments make fellowship nominations by February for the next academic year, so students interested in a fellowship are strongly urged to contact the appropriate Director of Graduate Studies no later than January 15 for the next academic year. Notification of fellowship awards generally comes from the Graduate School by early May.

Students from ethnically diverse backgrounds and women in under-represented areas applying for tuition scholarship and cost of education funding (Commonwealth Incentive Awards for Kentucky residents) or for a Lyman T. Johnson Fellowship are considered for spring, as well as for academic year awards.

For more information about these awards, call the Recruitment Office, (859) 257-4555, or visit on the Web at: [www.rgs.uky.edu/gsfellowship/FellowshipTable.html](http://www.rgs.uky.edu/gsfellowship/FellowshipTable.html).

Awards are sometimes offered before an applicant is officially admitted to the Graduate School; all awards offered are contingent upon admission. Post-baccalaureate (nongree) students are not eligible for fellowship consideration, or for those tuition scholarships that accompany most assistantships. Post-baccalaureate ethnically diverse students and women in under-represented areas are eligible for Commonwealth Incentive Awards.

### Student Support

Funds are available to students enrolled in graduate programs for assistance with expenses relating to dissertation or thesis research, as well as for travel to present research at professional meetings. Application materials are available on the Web at: [www.rgs.uky.edu/gsfellowship/supportfunding.html](http://www.rgs.uky.edu/gsfellowship/supportfunding.html).