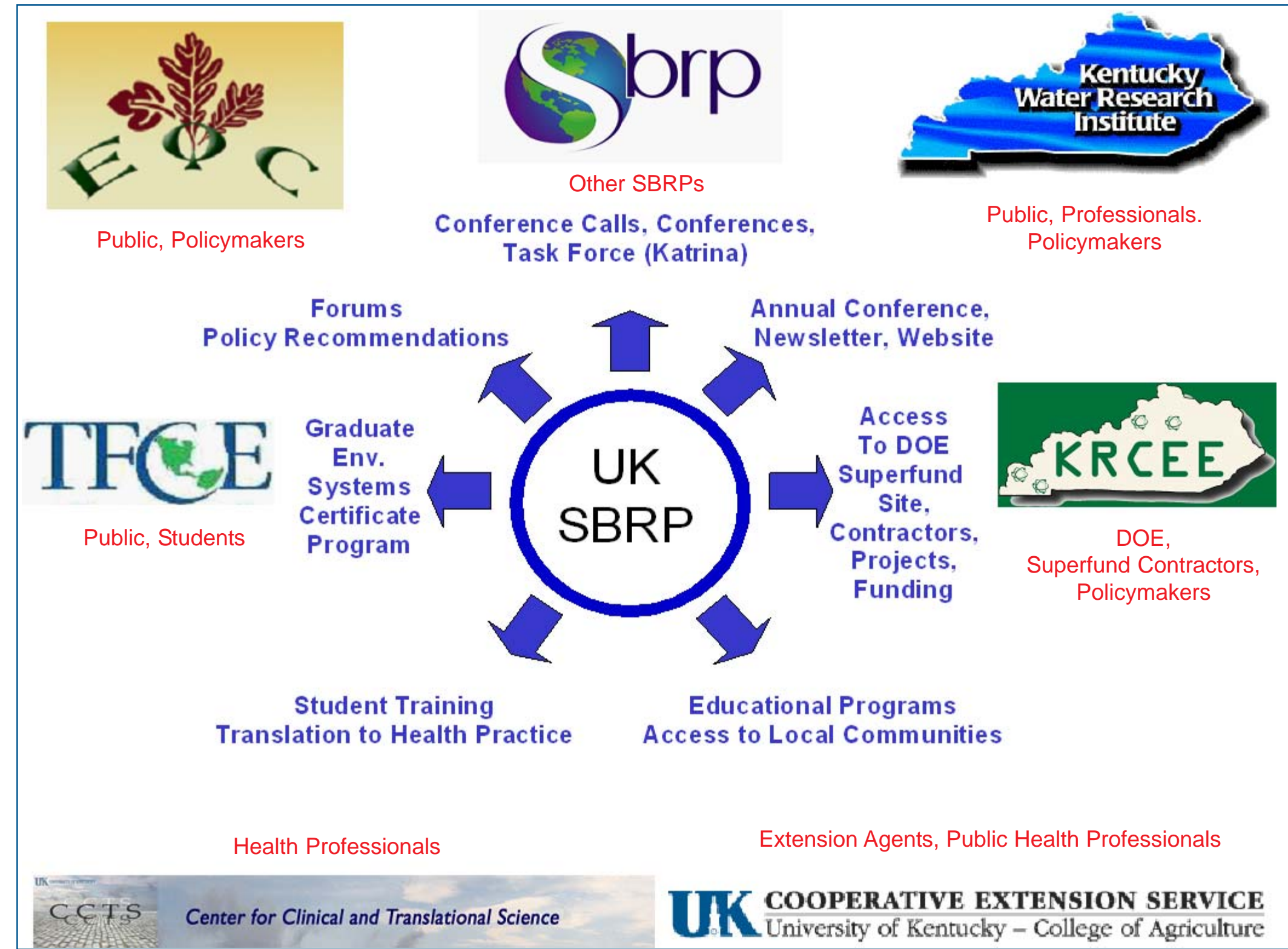


# Leveraging Partnerships for Improved Research Translation

The University of Kentucky SBRP Research Translation and Community Outreach Cores

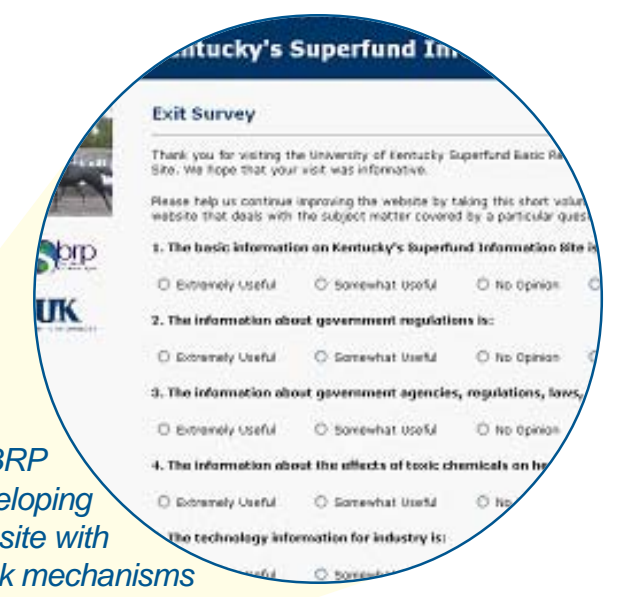
Dr. Lindell E. Ormsbee, Dr. Lisa Gaetke, Carolyn Hofe, Anna Goodman Hoover, Stephanie Jenkins



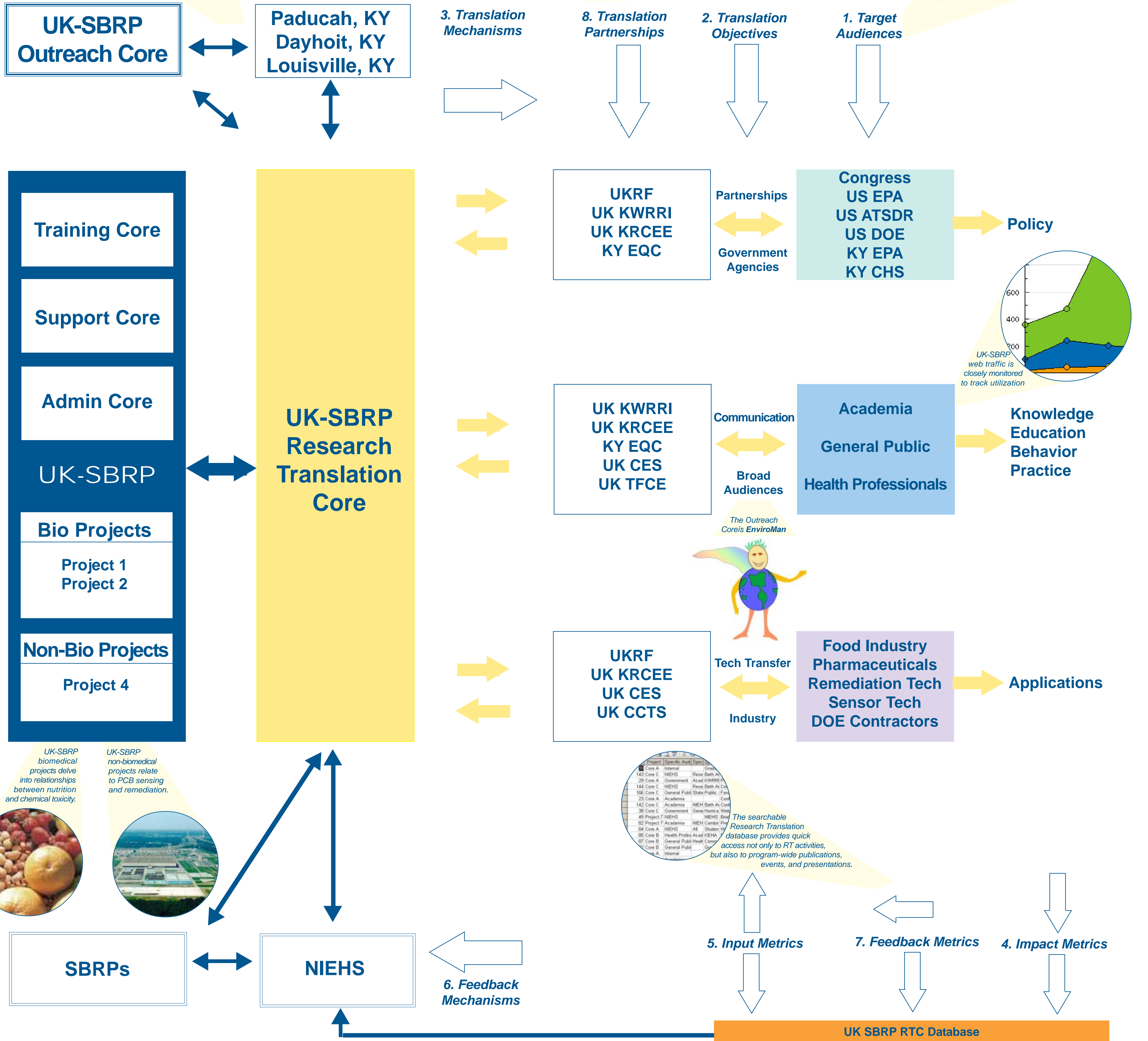
Superfund Community Action through Nutrition (SCAN) programs allow UK-SBRP Outreach PI Lisa Gaetke (left) to interact with impacted populations.

The University of Kentucky Superfund Basic Research Program Research Translation and Community Outreach Cores have forged a close relationship to promote improved communication to a number of constituencies. The Cores have expanded this collaboration to include government agencies, industry, and other units within the university itself. This allows the UK-SBRP to leverage stakeholder partnerships to ensure successful, widespread communication of research findings and their implications for specific constituencies. Among the partners are:

- University of Kentucky Center for Clinical and Translational Science
- Kentucky Research Consortium for Energy and the Environment
- University of Kentucky Cooperative Extension Service
- Kentucky Water Resources Research Institute
- Kentucky Environmental Quality Commission
- Tracy Farmer Center for the Environment
- NIEHS and the SBRP RTC Network



UK-SBRP RTC is developing a tailored website with built-in feedback mechanisms to better focus information delivery to specific audiences.



**Research Translation Core**  
 Superfund Basic Research Program  
 University of Kentucky  
 233 Mining & Mineral Resources Bldg  
 Lexington, KY 40506-0107  
 Tele: 859-257-1299  
 www.uky.edu/Research/Superfund

The project described was supported by grant number P42 ES007380 from the National Institute of Environmental Health Sciences, NIH. Its contents are solely the responsibility of the authors and do not necessarily represent the official views of the NIEHS, NIH.