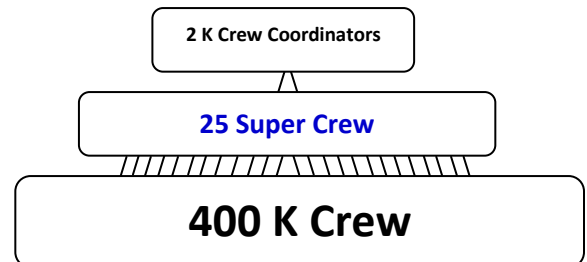




Interested in joining the Super Crew?

Introducing the Super Crew!

The Office of New Student and Parent Programs is excited to announce big changes to the K Crew leadership structure. In addition to the K Crew Coordinators, 25 Super Crew will be selected to serve as supervisors of the K Crew, plan and staff events during K Week, and help oversee a new yearlong peer mentor program. Super Crew members must have previously been on K Crew. They will serve for a 17 month period from January 2010 to May 2011 and are expected to make this leadership position a top priority. This mid-level volunteer position will provide valuable leadership experience and an opportunity to make a difference in the lives of UK's new students.



Qualifications and Characteristics of an Ideal Super Crew Member:

So, what type of student are we looking for? Here's the answer!

Knowledge

- *Knowledge of K Week* – We are looking for students who have participated in past K Weeks and have an idea of what the week entails.
- *Knowledge of UK* – Super Crew will need extensive knowledge of the University and be able to answer student and parent questions related to UK and life as a student.
- *Programming experience* – We are looking for students who have had experience putting together events and programs here at UK.

Personality and Leadership Skills

- *Good oral communication skills* – The Super Crew will be conducting trainings and may give public presentations. Therefore, we need students who feel very comfortable in front of large groups of people as well as facilitating small groups and can effectively engage a crowd.
- *Good written communications skills* – The Super Crew will write lots of emails to K Crew. We need students who can write professionally and represent the office well.
- *Organizational skills* – Coordinating your group of K Crew members will require attention to detail.
- *Sense of humor* – K Week can be chaotic and crazy at times. We need students who have a good sense of humor and can keep things lively.
- *Great personality* – We are looking for students who are fun, outgoing, and can relate well to all types of individuals (faculty, students, administrators, parents, etc.)
- *Reliable* – The Super Crew are asked to do a lot with very little supervision. We are looking for students who we can count on at all times to be punctual and demonstrate follow-through on assigned tasks.
- *Good reputation* – The Super Crew represents the University of Kentucky and therefore must be well-respected by the University community.
- *Good role model* – The Super Crew will be supervising the K Crew and are expected to be good role models academically and socially. Therefore, members of the Super Crew are expected to have a cumulative GPA of at least 2.25.
- *Good people management skills* – The Super Crew will interview, select, train, supervise, and coordinate the 400+ members of the K Crew.
- *Love for UK* – The Super Crew need to have a demonstrated love for the University of Kentucky that they will be able to share with the K Crew and new students.

Expectations for Super Crew Members:

The following is a list of expectations for all members of the Super Crew.

Spring 2010 Semester

- Attend **MANDATORY** Super Crew trainings once a month. Please avoid Tuesday night classes when putting together your spring semester class schedule. There will not be make-up trainings. Failure to attend these trainings in their entirety will result in removal from the Super Crew.
 - **Tuesday, January 26, 2010 from 6 – 7:30 p.m. in Student Center, Room 357.**
 - **Tuesday, February 23, 2010 from 6 – 7:30 p.m. in Student Center, Room 357.**

- **Tuesday, March 23, 2010 from 6 – 7:30 p.m. in Student Center, Room 357.**
- Work with K Crew Coordinators to plan K Week events. Each Super Crew member will be assigned to help oversee 2 or 3 K Week events.
- Help promote the K Crew position broadly across campus.
- Conduct K Crew interviews and selection process during March and April 2010.
- Help plan the K Crew Spring Retreat where you will help facilitate the training sessions.
- Assist with MANDATORY K Crew Spring Retreat on **Saturday, April 24 from 9 a.m. – 5 p.m. in Student Center, Worsham Theater.**

Summer 2010 Involvement / Before K Week (NOT required to be in Lexington over the summer)

- Stay in touch with your designated K Crew. Send emails and make phone calls to make sure the K Crew are completing their assigned tasks.
- Work with K Crew Coordinators to plan K Week events.
- Work with your K Crew to communicate with your designated list of new students to promote K Week and answer questions about coming to college.
- Be an active member on the Big Blue Network interacting with the new students.
- Read the Common Reading Experience book before school starts.
- Help plan the K Crew Fall Retreat where you will help facilitate the training sessions.
- Attend MANDATORY Super Crew training on **Thursday, August 19 from 10 a.m. – 12 p.m. in Student Center, Room 357.** There will not be a make-up training. Failure to attend this training in its entirety will result in removal from the Super Crew.
- Assist with MANDATORY K Crew Fall Retreat on **Friday, August 20 from 9 a.m. – 2 p.m. in Student Center, Worsham Theater.** Arrangements have been made with Panhellenic Council for all sorority members to be in attendance at this training until 2 p.m. when bid day activities are scheduled to begin. There will not be a make-up training. Failure to attend this training in its entirety will result in removal from the Super Crew.

During K Week 2010

Super Crew will oversee and assist their designated K Crew and will staff the majority of the K Week events, including academic and information sessions, campus tours, and social events. Super Crew are expected to be available during all of K Week and will be pre-assigned to work all the events. Please make arrangements with other jobs, organizations, or any other school year preparations (moving in, buying books, etc.) so that you can be available that week.

School Year Involvement / After K Week / Yearlong Peer Mentor Program

Fall 2010 Semester (Estimated time commitment: approximately 1 hour per week)

- Assist with the K Crew Peer Mentor Training the first week of school. This training will be held 3 different times. You will need to try and attend all three so you can help with the training.
 - **Tuesday, August 24, 2010 from 5 – 6:30 p.m. in Student Center, Center Theater**
 - **Wednesday, August 25, 2010 from 7 – 8:30 p.m. in Student Center, Center Theater**
 - **Thursday, August 26, 2010 from 3:30 – 5 p.m. in Student Center, Center Theater**
- Conduct monthly Peer Mentor meetings with your K Crew group.
- Oversee your K Crew to make sure they are making contact with their K Teams.

Spring 2011 Semester (Estimated time commitment: approximately 1 hour per week)

- Conduct monthly Peer Mentor meetings with your K Crew group.
- Oversee your K Crew to make sure they are making contact with their K Teams.

Thank you for your interest in the Super Crew. Participating in this important program provides an excellent opportunity to develop your leadership skills and makes the transition to university life a positive experience for UK's incoming first-year and transfer students as well as their families.

Return completed applications to 518 Patterson Office Tower by 4 p.m. on Friday, November 6, 2009. Interviews will be conducted by the K Crew Coordinators. Applicants will be contacted after the application deadline to sign up for a group interview. Group interviews will last about 45 minutes.

If you have questions, please call 257-6597 or e-mail KWeek@lsv.uky.edu.

Super Crew Application

Return completed applications to 518 Patterson Office Tower by 4 p.m. on Friday, November 6, 2009. Interviews will be conducted by the K Crew Coordinators. Applicants will be contacted after the application deadline to sign up for a group interview. Group interviews will last about 45 minutes.

Personal Information

Name _____ Student ID# _____

Cell Phone (_____) _____ Email _____

Hometown _____ Ethnicity (Optional) _____

Major _____ Cumulative GPA _____

Classification in **Fall 2010**: SO JR SR T-shirt size: S M L XL XXL

Sex: Male Female Did you transfer to UK? Yes No

Essay Questions

Please type answers to the following questions and attach your typed answers to this sheet.

1. Why do you want to be a member of the Super Crew?
2. Thinking back on your own experience as a member of the K Crew, what would you have done differently to help make the K Crew experience more rewarding and fun?
3. Please list your campus activities and student involvement.

Campus References

Please provide up to 2 campus references (e.g., professor, advisor, administrator; a letter of recommendation is not necessary.)

	Name	Position	Phone Number
1.	_____	_____	_____
2.	_____	_____	_____

Please read and sign the following:

Because the Super Crew position is now a year and a half-long leadership commitment, we ask that you fully commit to this experience. The following campus involvement opportunities will prevent you from being able to serve as a Super Crew – Resident Assistant (RA), Gamma Chi, Marching Band, or students who are planning to study abroad during Spring 2010, Summer 2010, Fall 2010, or Spring 2011. Some other campus

involvement opportunities may limit your ability to attend trainings and fully participate as a member of the Super Crew. Please check any of these groups/positions you anticipate being involved with during the Spring 2010, Fall 2010, and Spring 2011 semesters. If you check any of the groups/positions below, you may be required to get a waiver signed excusing you from their trainings/events that conflict with K Crew trainings and events.

- | | |
|--|---|
| <input type="checkbox"/> Members of sororities | <input type="checkbox"/> Tutors at The Study |
| <input type="checkbox"/> Members of fraternities | <input type="checkbox"/> B&E Ambassadors / B&E programs |
| <input type="checkbox"/> Athletes | <input type="checkbox"/> Ag Ambassadors |
| <input type="checkbox"/> Athletic Department Interns | <input type="checkbox"/> Other activities that you think might conflict |
| <input type="checkbox"/> AMSTEMM Peer Mentors | _____ |

I have read and understood the expectations outlined in the Super Crew application. I certify that the above information is true and accurate to the best of my knowledge. I also understand that my signature gives the Office of New Student & Parent Programs permission to verify my grade point average and contact my references.

Signature _____

Date _____

Return completed applications to 518 Patterson Office Tower by 4 p.m. on Friday, November 6, 2009. Interviews will be conducted by the K Crew Coordinators. Applicants will be contacted after the application deadline to sign up for a group interview. Group interviews will last about 45 minutes.

If you have questions, please call 257-6597 or e-mail KWeek@lsv.uky.edu.