

Maces Creek watershed (051002-01-060)

Geography. The Maces Creek watershed is in southern Perry County. The land is in the Eastern Kentucky Coal Field physiographic region, which is characterized by mountainous terrain, rapid surface runoff, and moderate rates of groundwater drainage. The watershed is underlain by coals, sandstones, and shales: this geology is generally conducive to productive wells, although water quality may be low for wells that draw from coal layers.

Waterways. The three forks of Maces Creek (Right, Middle, and Left) empty into the North Fork Kentucky River at Viper. Among the creeks that feed it are Stratton Branch, Lick Branch, and Wicks Branch.

Land and water use. Land in the watershed is nearly all rural and wooded. One school holds a permit for discharge into the creek. See the 2000 Assessment Report for full details.

Agency data assessment. The assessed creek segment in this watershed fully supports its designated uses, based on biological and/or water-quality data. See the 2000 Assessment Report or 2000 305(b) list and the 2002 303(d) list of impaired streams for full details.

Kentucky River Basin Management Plan, 2002. Information is from the first basin cycle (1997-2002), including the 1998-1999 monitoring effort and the 2000 Assessment Report. See kywatersheds.org or www.uky.edu/WaterResources/Watersheds for the complete Assessment Report and Management Plan.

Watershed Restoration Ranking			Watershed Protection Rank	Overall Watershed Rank	Framework Mobilization Category
<i>Observed Impacts</i>	<i>Potential Impacts</i>	<i>Combined Rank</i>			
Medium	Low	Medium	Medium	Medium	IV

Watershed Highlights

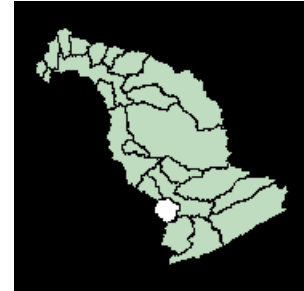
Watershed covers 27 square miles.

Part of source water protection zone 3 for the Hazard water system.

Watershed is in PRIDE service region. PRIDE identified 4 straight pipes or failing septic systems in the watershed.



North Fork Region



See the color map of this region on p. 119.

LEGEND

- Area of this watershed 
- Sewage plants 
- Public water supplies 
- Other water withdrawals 
- Locks & dams 
- Cities and towns 
- Rivers and larger streams 
- Smaller streams 
- County borders 

